

Cooperation between the DanubeSTREAM and DANUBEparksCONNECTED projects

EUSDR 8th Annual Forum, Bucharest, 28/06/2019

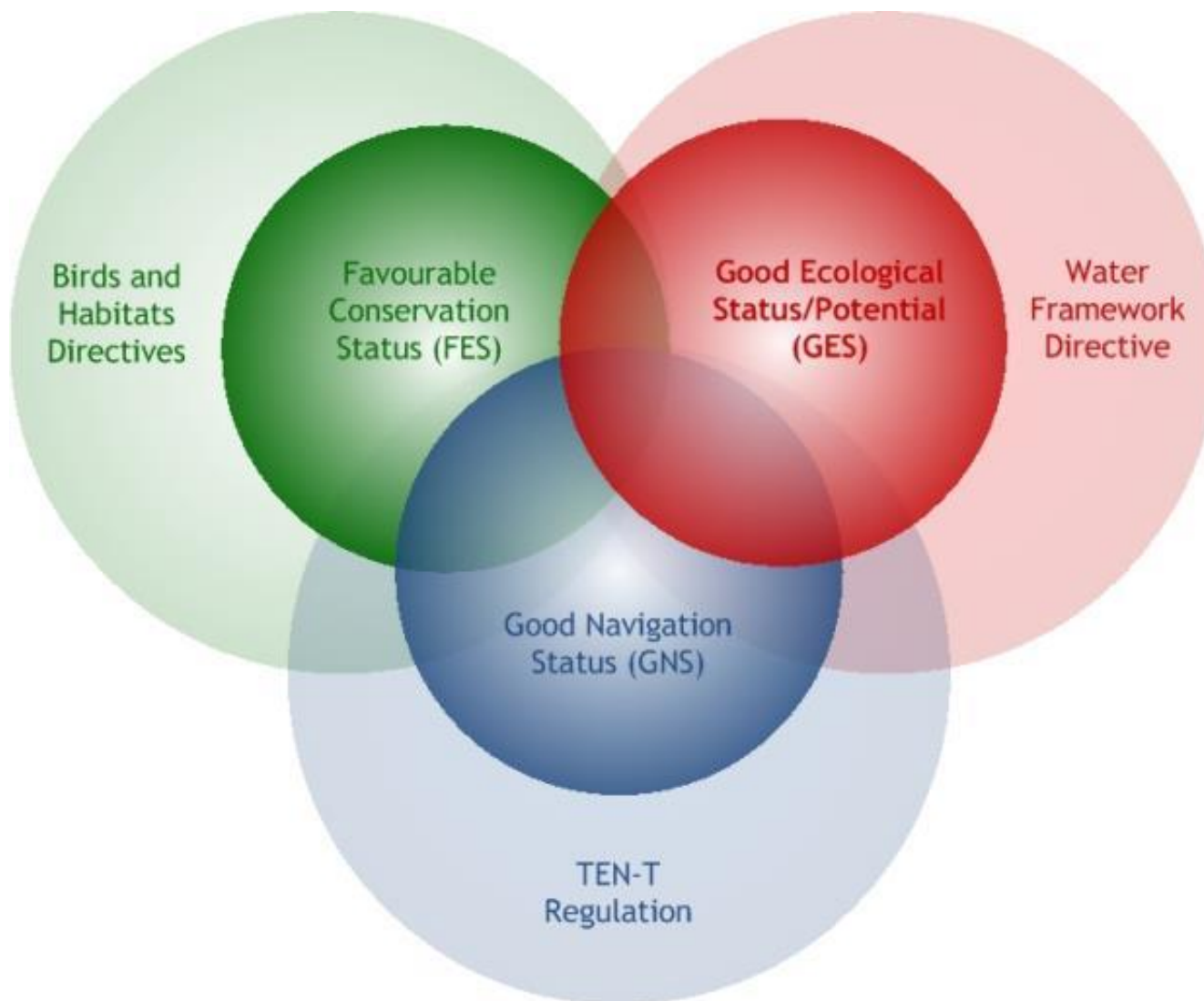
Georg Frank, project coordinator DANUBEparksCONNECTED
Gert-Jan Muilerman, project coordinator DanubeSTREAM

What's the problem?

- Danube navigation:
 - Unreliable fairway conditions at critical bottlenecks during low water season
 - Partly insufficient maintenance/rehabilitation activities
 - Delays of projects for various reasons
 - ...
- Nature conservation/protection:
 - Degradation/fragmentation of habitats
 - Loss of biomass/biodiversity
 - Insufficient ecological/chemical quality of surface waters
 - ...
- Legal requirements:
 - Water Framework Directive
 - EU Birds and Habitats Directives
 - TEN-T Regulation

Overarching objectives for nature protection and waterway management

- TEN-T Regulation (1315/2013) aims at achieving **Good Navigation Status (GNS)**
- Water Framework Directive (2000/60/EC) aims at **Good Ecological Status/Potential (GES/GEP)**
- Habitats Directive (92/43/EEC) aims at achieving **Favourable Conservation Status (FCS)**



DanubeSTREAM and DANUBEpar**ks**CON**NECTED**

JOINT ACTIVITIES AND RESULTS 2017-2019

Two intersectoral conferences

Dunakiliti (April 2017) and Kladovo (May 2018)

- In-depth presentations and exchange on main activities of
 - DanubeSTREAM
 - DANUBEparksCONNECTED
 - Danube Sediment
- Objective: Presentation of and discussion on good practices in environmentally sustainable waterway management, as developed in the DanubeSTREAM project.



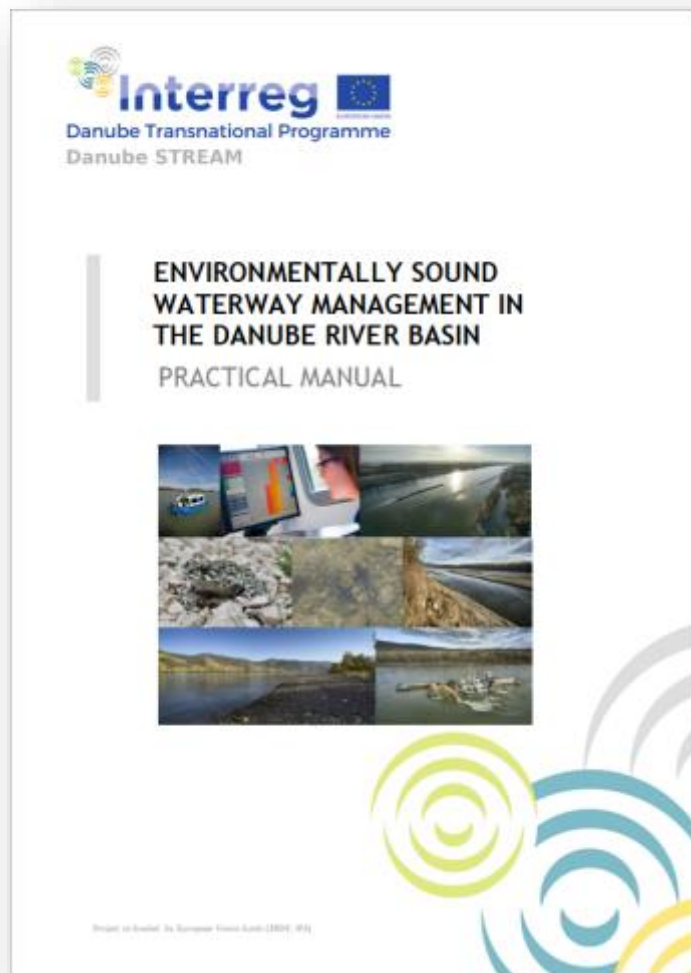
Intersectoral seminar

Danube Awareness Day on 13th September 2018

- Organised in cooperation with the International Commission for the Protection of the Danube River
- Presentation of and discussion on good practices in environmentally sustainable waterway management, as developed in the DanubeSTREAM project
- Labelled as an “Austrian EU Presidency” event
- 70 participants, lively panel discussion

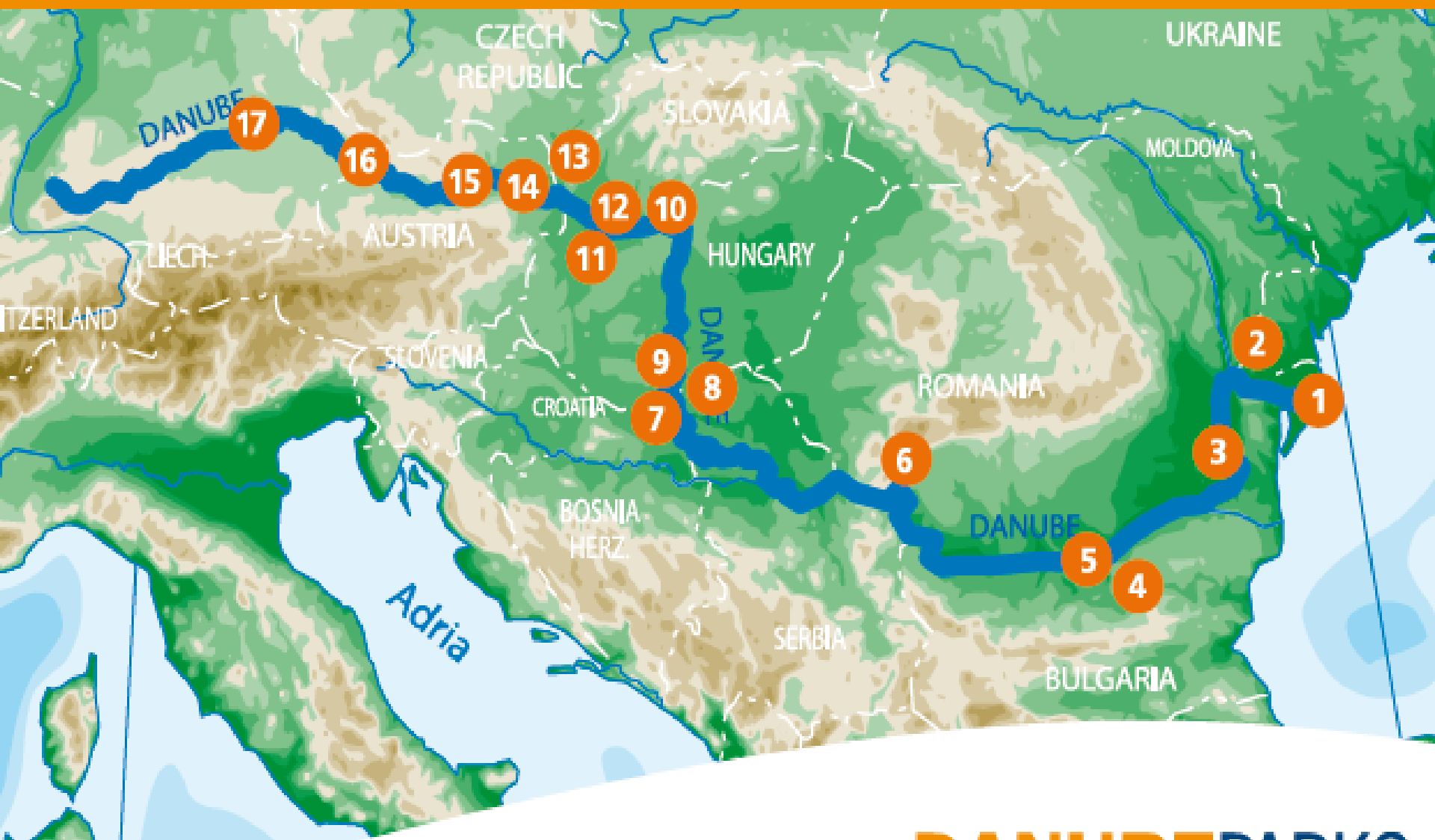


Manual on environmentally sound waterway management



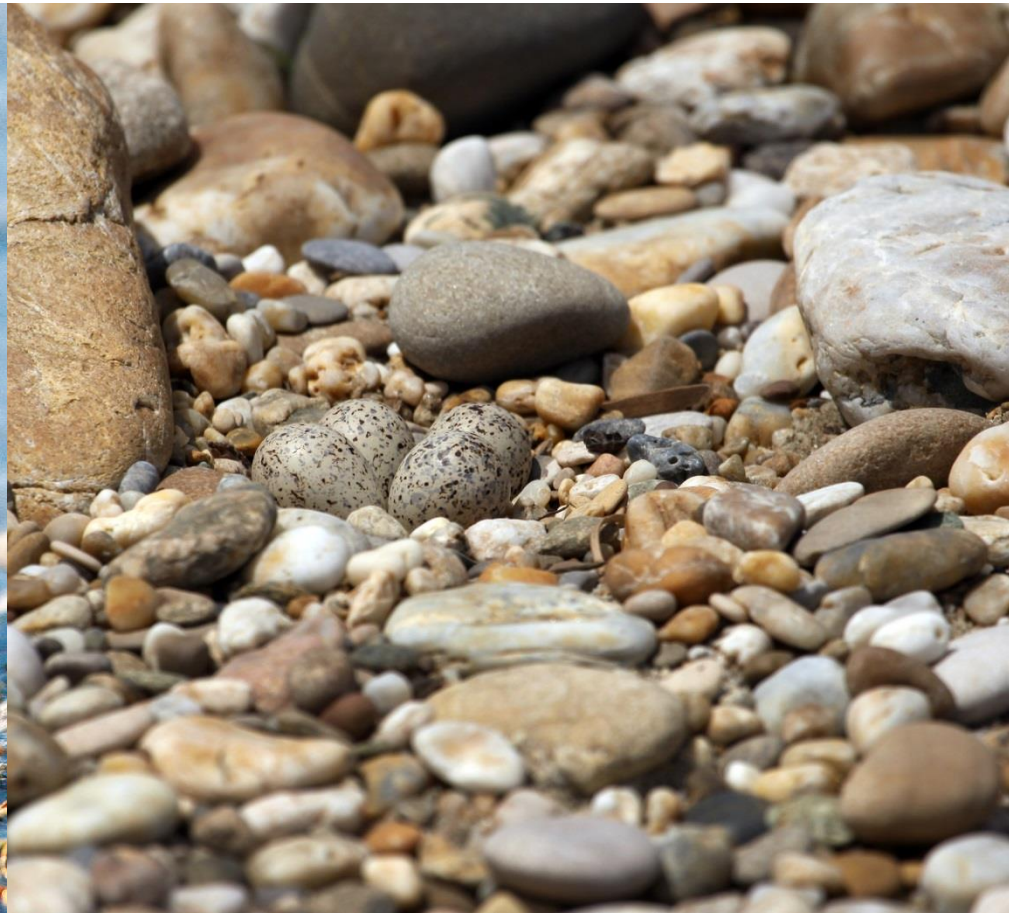
- Sharing know-how and experiences with regard to the setup of integrated waterway maintenance in practice
- Providing checklists and a model process
- Illustrating the „integrated approach“ with good practices from the Danube region

- 1 Danube Delta Biosphere Reserve
- 2 Lower Prut Natura Reserve
- 3 Small Wetlands of Braila
- 4 Rusesti Lom Nature Park
- 5 Persina Nature Park
- 6 Iron Gates Natural Park
- 7 Kopačkit Nature Park
- 8 Gornja Podunavlje Special Nature Reserve
- 9 Duna-Dráva National Park
- 10 Duna-Ipoly National Park
- 11 Szigetköz Landscape Protection Area, Fertő-Hanság National Park
- 12 Dunajski Luhy Protected Landscape Area
- 13 Záhonia Protected Landscape Area
- 14 Danau-Auen National Park
- 15 Wachau Protected Landscape Area
- 16 Narrow Valley of the Danube In Passau district
- 17 Donaueauwald Neuburg-Ingolstadt



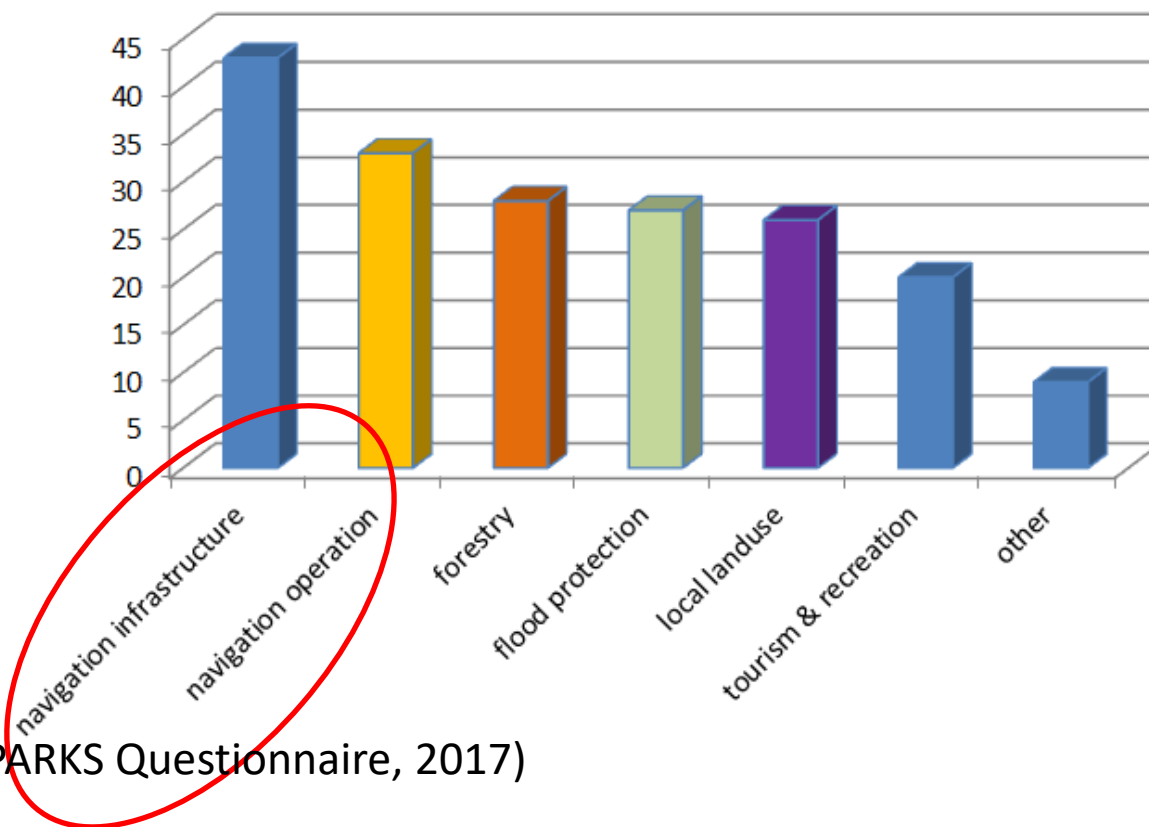
DANUBE PARKS
network of protected areas





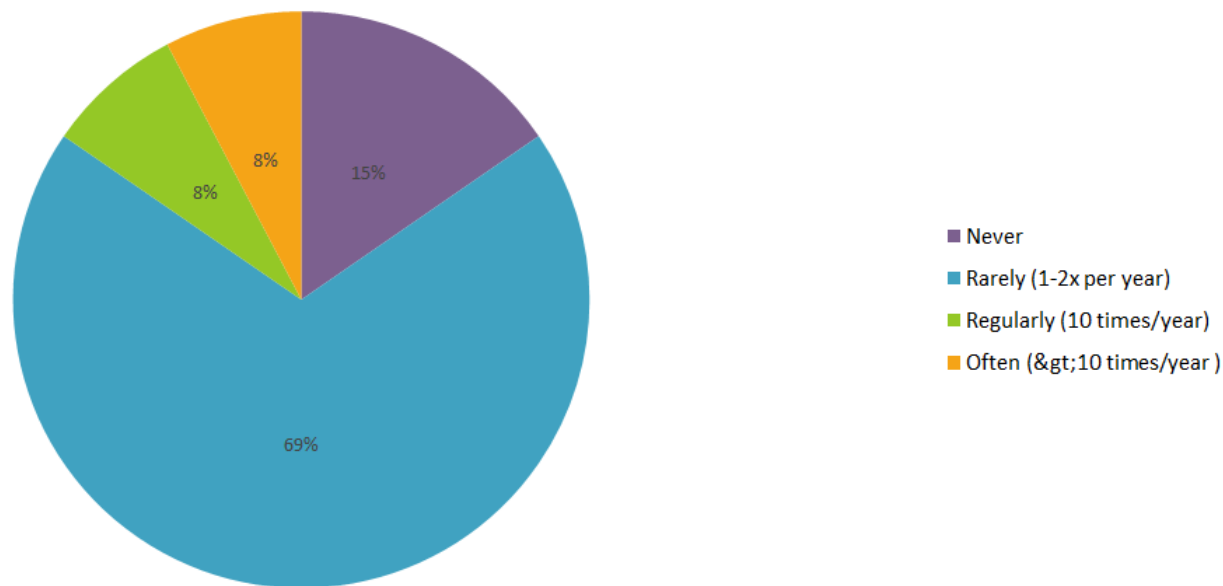


Which sector has the strongest impact on river (!) habitats in your Protected Areas/in your section in the previous 10 years? Please rank from 1 - 5 (1 is highest, 5 is lowest)



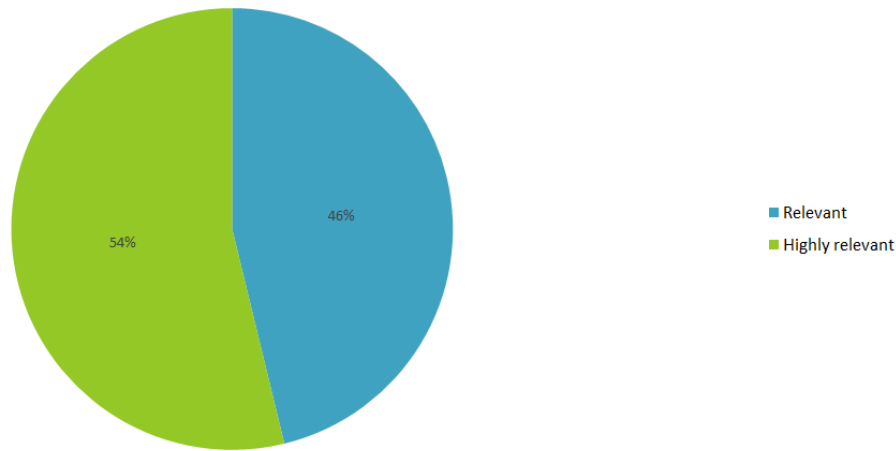
(DANUBE PARKS Questionnaire, 2017)

How often do you (respectively the expert team of your Protected Area) have official meetings with colleagues from the waterway/navigation sector?



(DANUBEPARKS Questionnaire, 2017)

In your opinion, how relevant is the cross-sector cooperation with the navigation sector for Danube Protected Areas?



DANUBEparks**CONNECTED** - NATURE CONSERVATION AND WATERWAY MANAGEMENT AT THE DANUBE RIVER
 15-05-2017

The Interreg Danube Transnational Programme is an important platform for the cross sectoral cooperation along the Danube River. In the framework of the interdisciplinary conference on 26th 27th April in Dunakiliti (Hungary), more than 50 representatives of various interest groups set new initiatives on the interface of river morphology and waterway management. The conference has been organised jointly by DANUBEparksCONNECTED and Danube STREAM.



(DANUBE PARKS Questionnaire, 2017)

An aerial photograph of a wide river, likely the Danube, with a large, elongated island covered in dense green forest. A barge is visible on the river. The surrounding landscape includes agricultural fields and more forested areas.

WILDisland

The Danube Wild Island Habitat Corridor

approx. 34% of Alluvial Soft Wood Forests (priority 91E0* FFH-Habitat) are located on islands,
40% in a good conservation status (including pristine forest stand)

DANUBEPARKS

network of protected areas

WILD ISLANDS



AT040 PARADEISINSEL

AUSTRIA
4812075377950, 10.6832212730

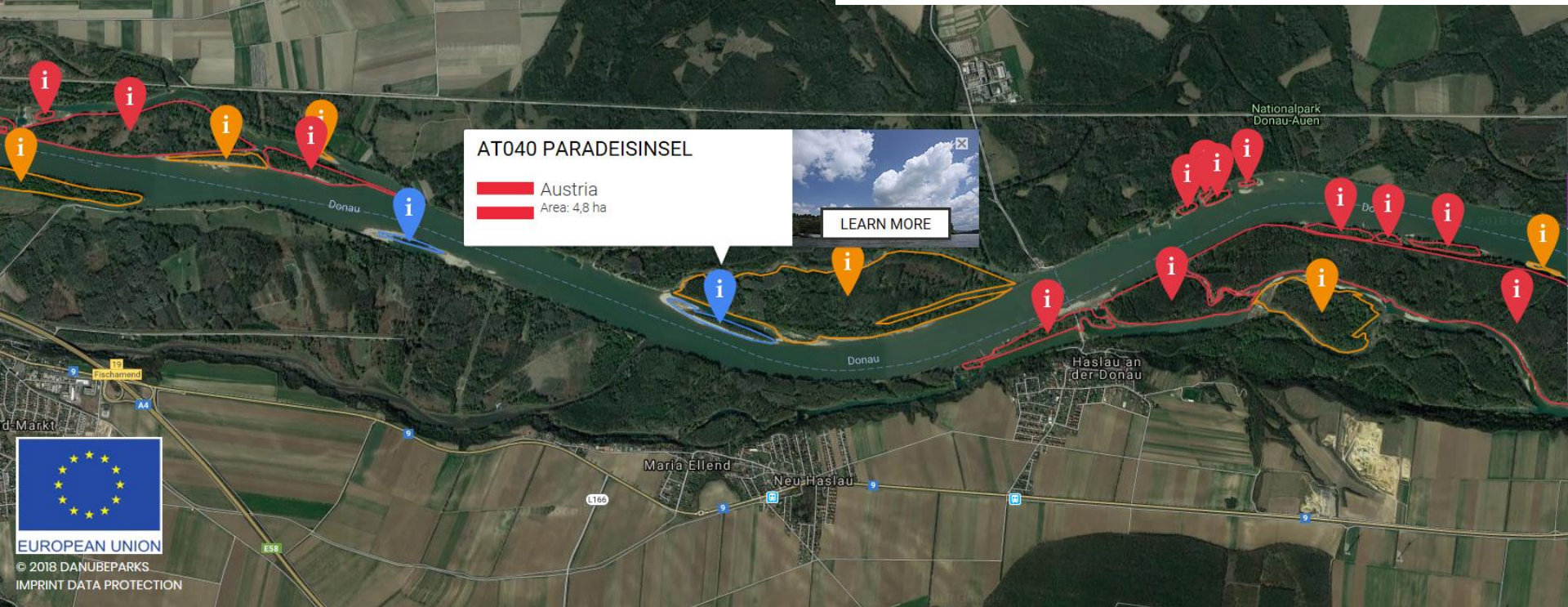
CATEGORY: A AREA: 4,8 ha

ORIGIN: A HYDRO-MORPHOLOGY: 3

RIVER KM: 1905

HABITAT CHARACTERISTIC:
PIONEER VEGETATION, BARS AND SOFTWOOD GALLERIES

GENERAL INFORMATION:
LARGE GRAVEL BANKS AND PRIMEVAL FORESTS (IN THE AGE OF APPROX. 30 YEARS) MAKE THIS ISLAND UNIQUE FOR THE UPPER DANUBE. VERY NICE GRADIENT FROM GRAVEL BANKS, WILLOW BUSH VEGETATION TO POPLAR STANDS. IMPORTANT BREEDING SITE FOR LITTLE RINGED PLOVER AND SAND PIPER. THEREFORE, IT IS STRICTLY FORBIDDEN TO ENTER THE AREA.
CONSERVATION STATUS: NATIONAL PARK, NATURA 2000



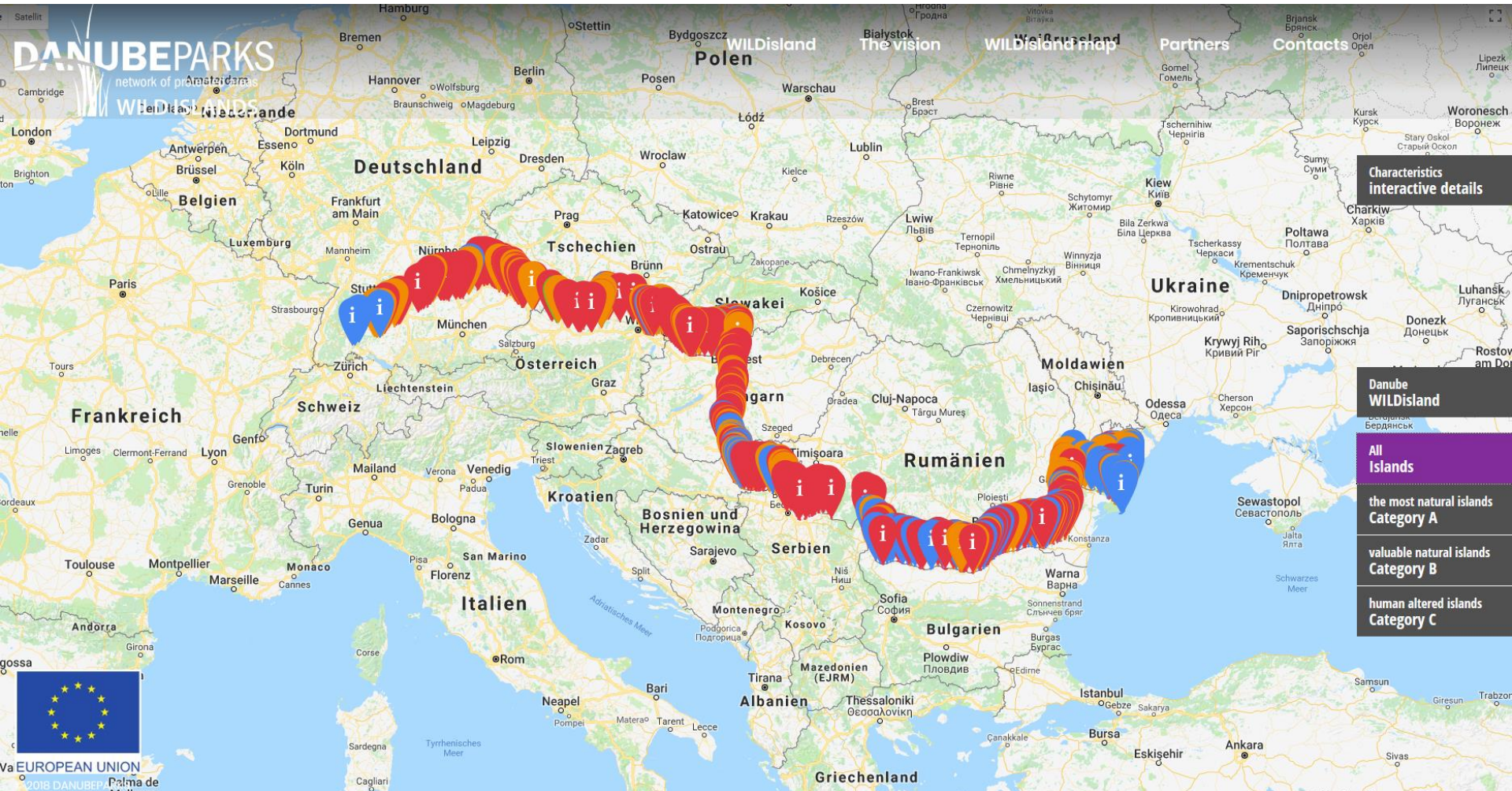
AT040 PARADEISINSEL

Austria
Area: 4,8 ha

LEARN MORE



EUROPEAN UNION
© 2018 DANUBEPARKS
IMPRINT DATA PROTECTION



The Danube Wild Island Habitat Corridor

3,000 river kilometres

912 islands

138,000 ha of dynamic island habitats

147 untouched or completely natural islands

14,000 ha of wilderness

Project co-funded by the European Union (ERDF, IPA funds)



[LEARN MORE](#)

HOME



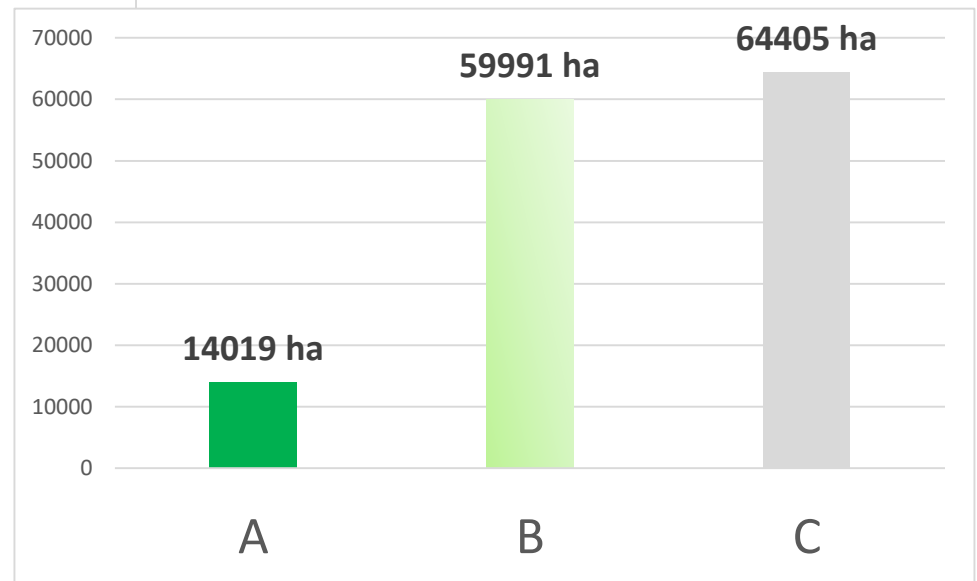
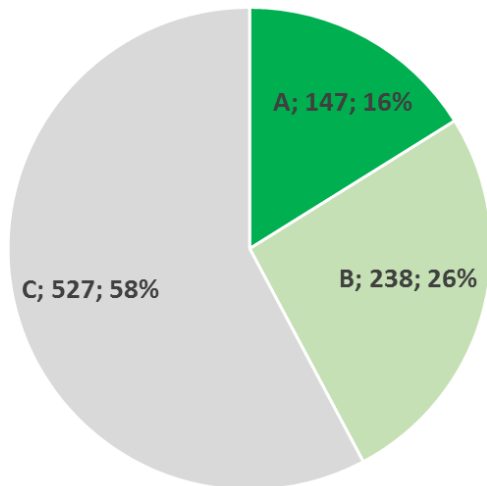
EUROPEAN UNION

© 2018 DANUBE PARKS

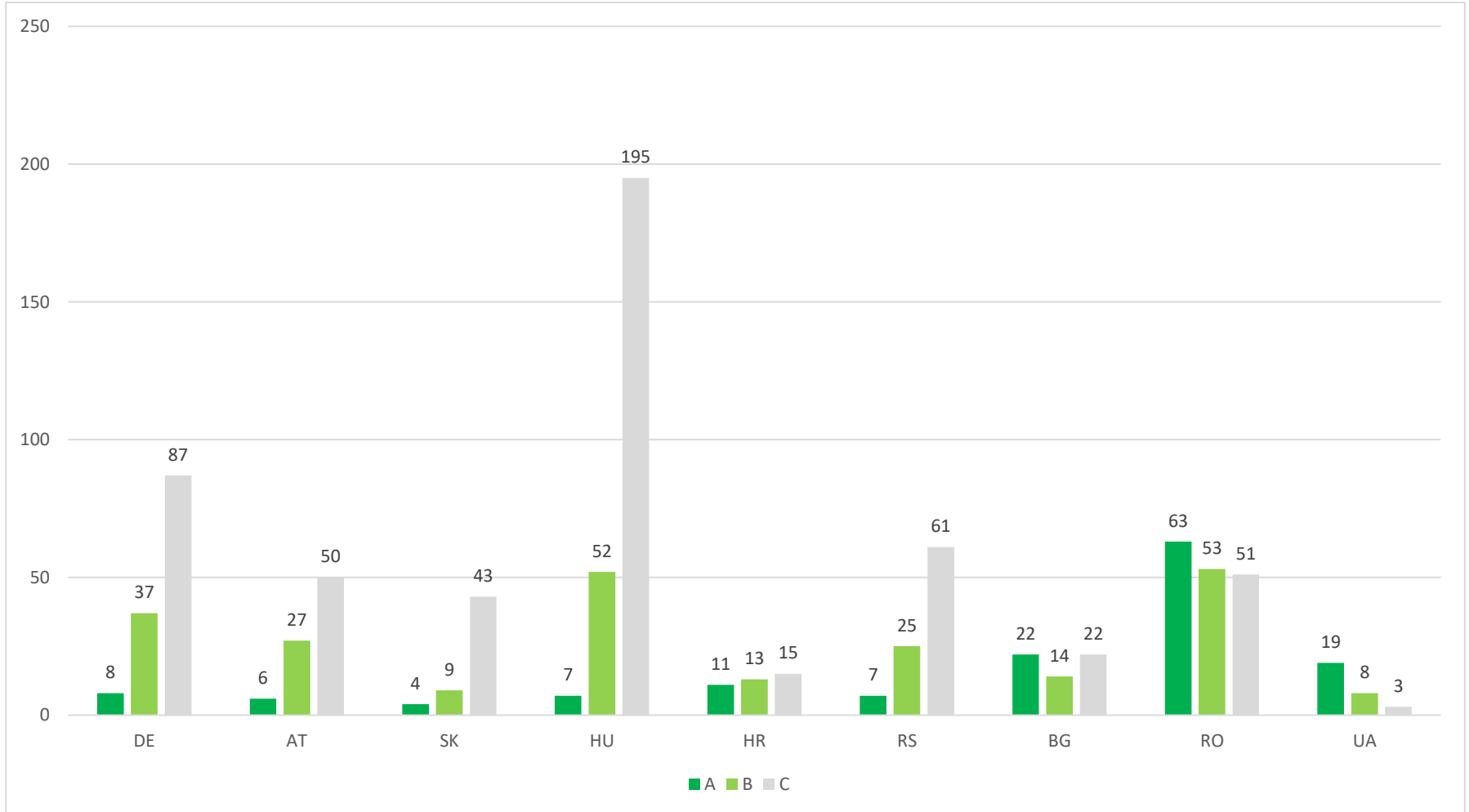
IMPRINT DATA PROTECTION

Results

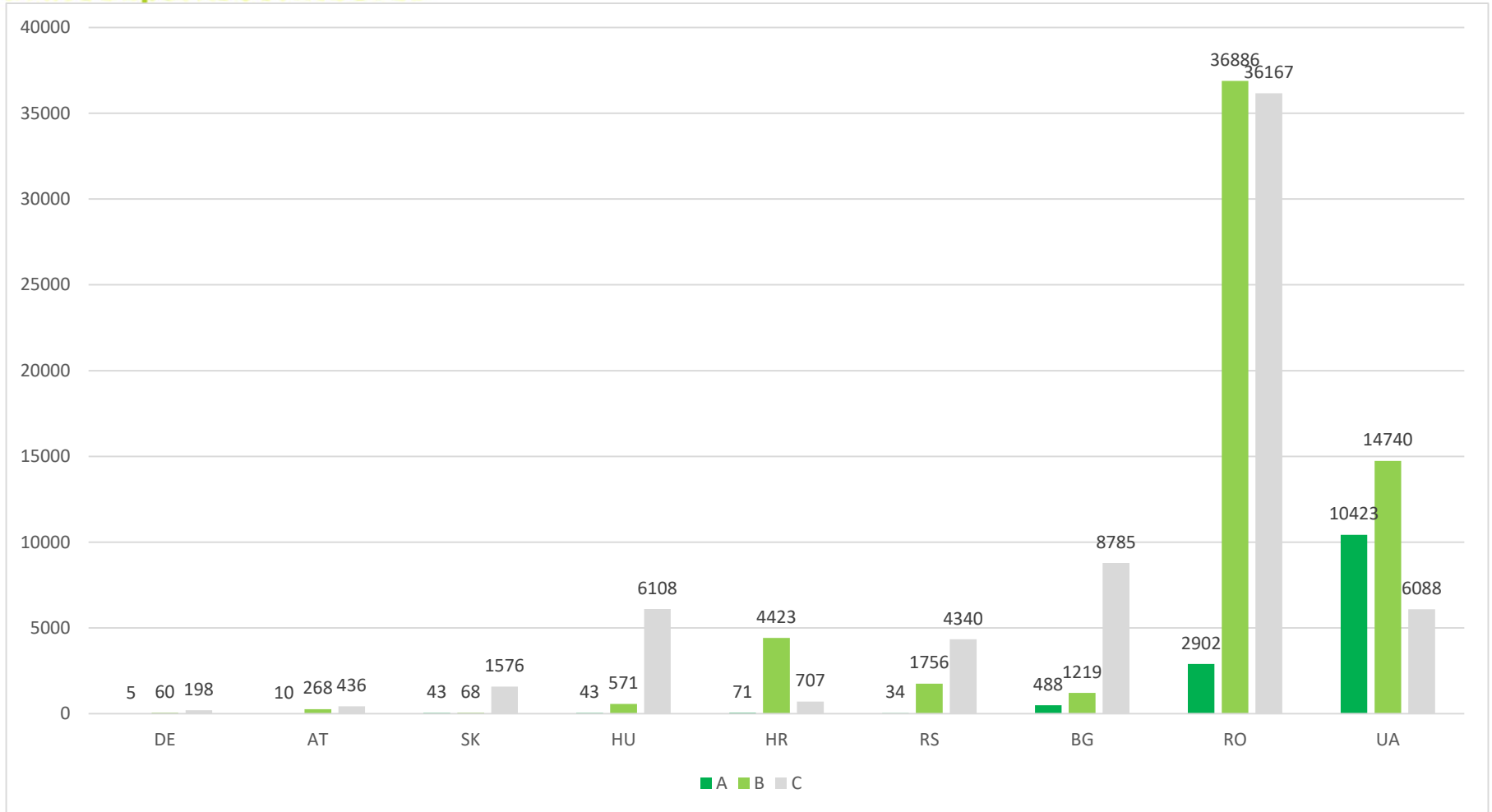
In total: **912 islands with 138,415 ha**



Results per country (number)



Results per country (ha)



Commitment by the Danube Protected Areas to work for and to establish WILDIsland – the Danube Wild Island Habitat Corridor

The Danube Protected Area Administrations

- share the common mission to work together for the Danube natural heritage;
- consider that the Danube River represent an unique nature region of European importance
- underline the common understanding for the importance of river dynamics as key natural driver of intact river ecosystems, and the importance to maintain and strengthen the ecological corridor along the Danube river course
- stress Danube islands as key habitats for unique, and often highly threatened species, characteristic for the dynamic river ecosystem and essential as stepping stones towards vital Danube habitat corridor
- share the common understanding of the high value of wild and wilderness areas with their diverse natural processes
- underline the diversity of islands as indicator for the diversity in riverbed morphology and hydrodynamic structures.

Hence, together with partners and relevant stakeholders, DANUBEPARKS intends to promote better conservation of natural and semi-natural Danube islands by launching the WILDIsland initiative, considering islands as “flagship sites” of intact and natural river eco systems.

To ensure a better conservation of the Danube WILDIslands on a long-term, the proponent of this initiative invite all land owners and land users, all relevant stakeholders and represent from the policy level, to support this initiative, considering the

- multi-functionality of the Danube, including its habitat corridor and biodiversity, recreation and inspiration area, transnational transport route and an important sustainable economic development
- integration of different sectors, in particular waterway management, forestry as water and sediment management, and tourism and recreation, to work efficient sustainable development of the Danube region and the conservation of the WIL

To establish WILDIsland – The Danube Wild Island Habitat Corridor, DANUBEPARKS invites the International Commissions to take over the patronage for this initiative, and the EU Strategy for the Danube Region for its support to anchor WILDIsland by promoting this initiative cross-over sectors by the relevant Priority Areas, in particular PA6, PA4 and PA1a.



Director Stela Bozhinova
Persina Nature Park, Bulgaria



Director Ionel Manolache
Small Wetlands of Braila Nature Park, Romania



Director Marta Takač
Vojvodinašume, Petrovaradin, Serbia



Director Szabolcs Zayoczký
Duna-Drava National Park Directorate, Hungary



Director Gábor Reischl
Fertő-Hanság National Park Directorate, Hungary



Governor Mălin-Matei Muşetescu
Danube Delta Biosphere Reserve Authority, Romania

Director Ivan Groychev
Rusenski Iom Nature Park, Bulgaria



Director Tomislav Bogdanović
Nature Park Kopački rit, Croatia



Director András Fűr
Duna-Ipoly National Park Directorate, Hungary



Director Martin Lakanda
State Nature Conservancy, Slovakia



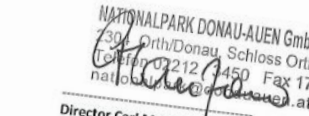
Chairman Tomáš Kušík
BROZ, Slovakia

Welterbegemeinden Wachau
A-3620 Spitz, Schlossgasse 3
Tel. 0043 3300000 Fax DW 70
office@wachau-dunkelsteinald.at

Chairman Andreas Nunzer
Welterbegemeinden Wachau, Austria



HD Rupert Ebner
Environmental Department
Ingolstadt, Germany



Director Carl Manzano
Donau-Auen National Park, Austria



District Administrator Franz Meyer
Landratsamt Passau, Germany



District Administrator Roland Weigert
Neuburg, Germany

WILDIsland Commitment by DANUBEPARKS Directors



Nov. 2018



Dez. 2018



April 2019

Restoration Island at Wolfsthal (viadonau & Donau-Auen National Park)

KURIER

Wirtschaft Sport Lifestyle Kultur

Insellösung bei Wolfsthal
Renaturierung der Dona

Mit der Schaffung einer künstlichen Insel ös weiterer Lebensraum für Tiere geschaffen.

Chronik Niederösterreich

Eine richtige Insel statt eine weitgehend in Kiesbank – bei Wolfsthal ist ein weiteres f der Donau-Auen abgeschlossen worden. f Kilometer waren seit November 2018 neu Niederwasserregulierung rückebaut, 60r entfernt und damit der Graben zwischen Donauufer vertieft worden. Die Insel Wi

Der Graben ist nun auch bei durchschnittlicher Wasserführung durchströmt. Zuletzt hatte die Kiesbank aufgrund der bestehenden Regulierung der Donau ihren Inselcharakter weitgehend verloren gehabt.

RENATURIERUNG: NEUE „DONAUINS

Wolfsthal. Mit der Umgestaltung einer Kiesbank in eine Insel bei Wolfsthal wurde unter anderem im Fluss ein Lebensraum für Fische geschaffen, in de östlich von Wien. Laut Landesrat Stephan Pernkopf sind weitere Projekte in der Wachau und dem Nationalpark Donau-Auen in Vorbereitung.

BILDUTOR: VIADONAU

REGIONEWS.at

Home Österreich Aktuelles International Events Mag

Wien Oberösterreich Niederösterreich Salzburg Tirol Kärnten Steiermark Burgenland Vorarlber

Lebensraum Donau: Kiesbank zu Insel umgestaltet

Lebensraum Donau: Kiesbank zu Insel umgestaltet
Foto: Georg Frank

12 Apr 13:03 2019 von OTS Print This Article

In der österreichisch-slowakischen Grenzstrecke wurde auf Höhe Wolfsthal eine weidenbewachs Kiesbank zur Insel umgestaltet.

Wien (OTS) - Manchmal sind Insellösungen durchaus erstrebenswert. Das Vorhaben wurde in Kooperation mit dem Nationalpark Donau-Auen umgesetzt und die Vorbereitungen aus dem Proje DANUBEparksCONNECTED (Interreg DTP - Programm) kofinanziert.

meinbezirk.at

Bruck an der Leitha Anmelden

Nachrichten Leben Termine Gewinnspiele Galerien Karriere & Jobs Kleinanzeigen E-Paper

Niederösterreich Bruck an der Leitha Lokales

FLUSSREVITALISIERUNG

Donau: Startschuss zur Revitalisierung der Insel Wolfsthal

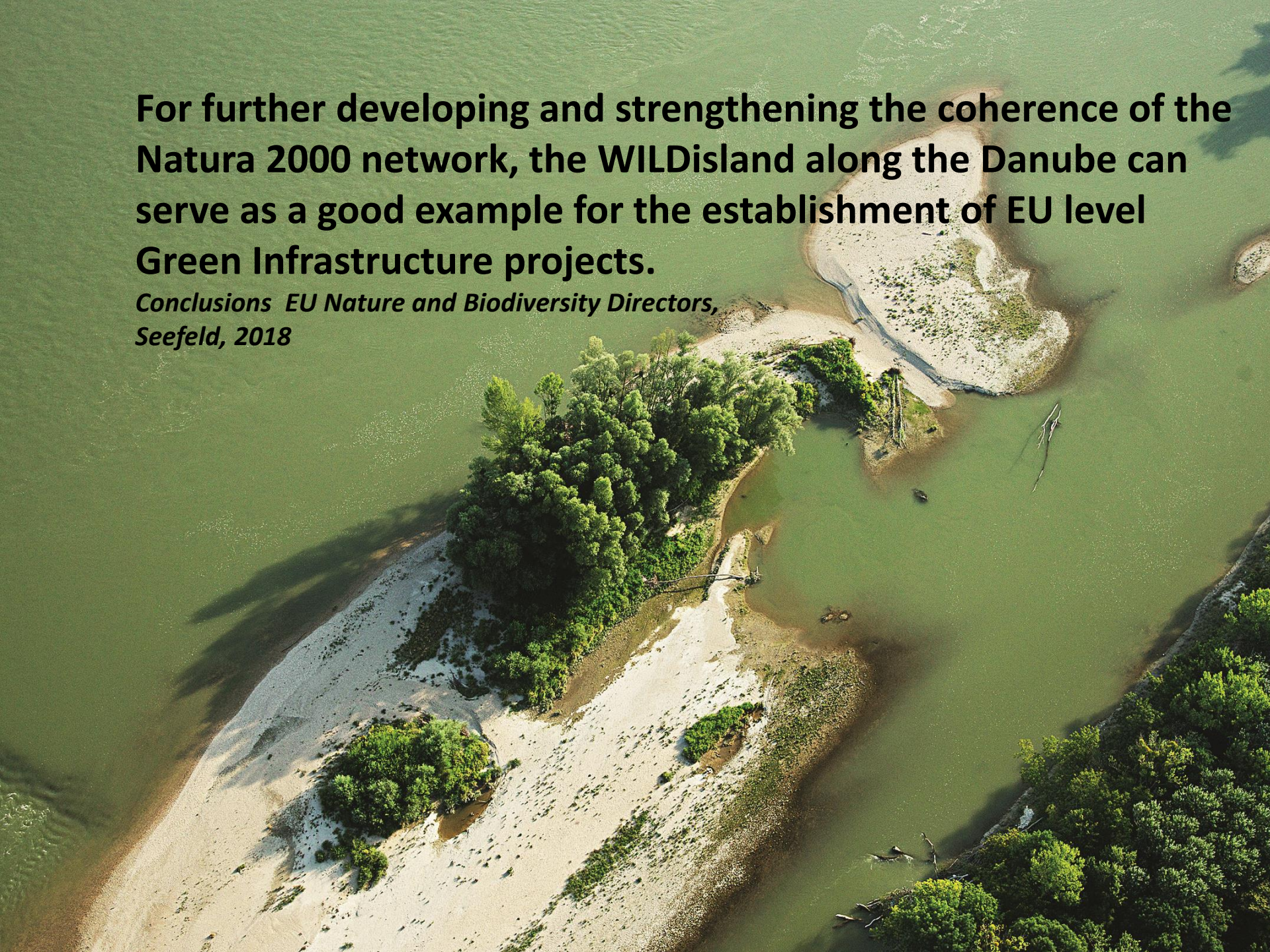
5. Dezember 2018, 10:29 Uhr 109+ gelesen 0 0

7 Bilder

Donau: Startschuss zur Revitalisierung der Insel Wolfsthal mit Hans-Peter Hasenbichler (viadonau), Wolfsthal's Bgm. LABG, Gerhard Schödinger und Nationalpark Donau-Auen Direktor Carl Manzano. Foto: © bme hochgeladen von Bianca Mrazk

For further developing and strengthening the coherence of the Natura 2000 network, the WILDisland along the Danube can serve as a good example for the establishment of EU level Green Infrastructure projects.

*Conclusions EU Nature and Biodiversity Directors,
Seefeld, 2018*



First Commitments for non-intervention management signend on political level

Absichtserklärung

Das Bayerische Umweltministerium hat zusammen mit Kroatien die Koordinierung des Schwerpunktbereiches 8 „Erhaltung der biologischen Vielfalt, der Landschaften und der Qualität von Luft und Boden“ im Rahmen der Strategie der Europäischen Union für den Donaauraum und damit direkte Verantwortung für diese Themenfelder im gesamten Donaauraum übernommen, vor diesem Hintergrund wird folgendes beabsichtigt:

Die von der Donau beim Pfingsthochwasser 1999 aus einer langgezogenen Halbinsel geschaffene Insel östlich von Neuburg an der Donau, Donaukilometer 2473,5 bis 2474,8 soll von menschlichen Nutzungen freigehalten werden. Es wird von allen Seiten begrüßt, wenn der Wildnis-Charakter der Insel erhalten werden kann. Rechtliche und behördliche Verpflichtungen bleiben von dieser Absichtserklärung unberührt. Der Freistaat Bayern wird diese Insel als ersten Baustein in das Wildnis Insel Projekt des Interreg Projektes DANUBE parksCONNECTED einbringen.

Memorandum of Understanding

The Bavarian Ministry of the Environment, together with Croatia, has taken over the coordination of priority area 8 „Conservation of biodiversity, landscapes and the quality of air and soil“ within the framework of the European Union Strategy for the Danube Region and thus is directly responsible for these topics throughout the Danube Region. Against this background, the following is intended:

The elongated island of the Danube east of Neuburg an der Donau, located at km 2,473.5 to 2,474.8, formed by the 1999 Whitsun flood, is to be held free from human use. Parties agree on preserving the natural character of the island. Legal and administrative liabilities are exempted from the provisions of the memorandum. The State of Bavaria will add the natural status of the peninsula as a first module of the Wild Island Project of the Interreg DANUBE parksCONNECTED campaign.

an der Donau, den 29. Juni 2018


Staatsminister Dr. Marcel Huber, MSt.



Cooperation and capitalisation is TO BE CONTINUED...

- Through common memorandum on understanding
- Through joint projects in other programmes
- ...



CONCEPT NOTE
LIFE Nature and Biodiversity
TECHNICAL APPLICATION FORMS



LIFE19 NAT/AT/000028

 LIFE 2019	FOR ADMINISTRATION USE ONLY LIFE19 NAT/AT/000028
---	---

LIFE Nature and Biodiversity project application

Language of the proposal:
English (en)

Project title:
Danube Wild Island Habitat Corridor

Project acronym:
LIFE WILDIsland

The project will be implemented in the following Member State(s) and Region(s) or other countries:

Austria	Oberösterreich Niederösterreich Wien
Bulgaria	Severozapaden Severen tsentralen
Croatia	Kontinentalna Hrvatska
Germany	Bayern Baden-Württemberg
Hungary	Nyugat-Dunantul Közep-Dunantul Közep-Magyarország Del-Alfold Del-Dunantul
Romania	Sud-Est Sud-Muntenia Sud-Vest Oltenia Vest
Slovakia	Bratislavsky kraj Zapadne Slovensko
Serbia	All regions
Ukraine	All regions

Expected start date: 01/09/2020 **Expected end date:** 31/08/2026