



# Danube Transnational Programme

*Stuttgart, 19.12.2018*

A stream of cooperation

1. Topics already addressed by PA1 projects under 1<sup>st</sup> & 2<sup>nd</sup> call
2. Main topics and elements of the 3<sup>rd</sup> call under PA1
3. General DTP requirements for a successful project application
4. Brokerage session

### **S.O.1.1 Improve framework conditions for innovation (short title).**

Improve the institutional and infrastructural framework conditions and policy instruments for research & innovation to ensure a broader access to knowledge for the development of new technologies and the social dimension of innovation ( see the DTP Cooperation Programme).

**14 projects financed under call 1 and 2, success rate around 10%**

### **S.O.1.2 Increase competences for business and social innovation**

**(short title).** Foster innovative learning systems to increase competences of employees in the business sector, to strengthen entrepreneurial culture and learning contributing to better meet social needs and the delivery of services in the general interest ( see the DTP Cooperation Programme)

**11 projects financed under call 1 and 2, success rate around 5 %**

## S.O.1.1 projects 1<sup>st</sup> & 2<sup>nd</sup> call

Projects covering eco-innovation technologies, bio- and circular economy, new macro-regional strategies for bio-fuels, eco-construction, eco-packaging, hemp usage, phytopharma products, agro-food industry, forest-based manufacturing or urban recycling. ([Eco-InnDanube](#), [Moveco](#), [Foresda](#), [DanuBioValNet](#), [Made in Danube](#))

Projects ensuring knowledge transfer and access to research infrastructure, such as the new ELI, promoting responsible research and innovation among key decision-makers, or diversifying the utilisation of high-speed computing for business administration processes and protecting intellectual property rights ([D-STIR](#), [RI2Integrate](#), [ResInfra@DR](#), [KowingIPR](#), [InnoHPC](#))

Projects creating new cluster policies by linking existing local cluster policies to macro-regional ones via S3 priorities, or facilitating access to crowdfunding or business acceleration mentorship programmes. ([DanubeS3cluster](#), [SmartFactoryHub](#), [Crowdstream](#), [Accelerator](#))

## S.O.1.2 projects 1<sup>st</sup> & 2<sup>nd</sup> call

Projects covering massive brain drain, the lack of appropriate entrepreneurial public policies and social services, or the low level of entrepreneurial skills in technological or non-technological areas (**NewGenerationSkills, Inno-school, Da-Space, Senses, Digitrans, WomenInBusiness**)

Projects striving to deliver newer and better innovative services, developed with and for the Danube Region's inhabitants, by facilitating the transfer of new technologies in the process of dementia care or by supporting the emergence of a new generation of research and innovation managers (**Indeed, Excellence-in-ReSTI**)

Projects supporting the transfer of research results and innovation activities into the real economy as a way of directly tackling societal changes , or creating a regional ecosystem able to support Young Innovators in their effort of transforming revolutionary ideas into successful ventures (**DanubeChance 2.0, Finance4SocialChange, Danube Energy +**)



# DTP -third call



...to be launched

---

**INDICATIVELY, end of 2018 - beginning of 2019**

**BUT**

- Applicants Manual
- EoI templates
- Guidelines for EoI

**ARE AVAILABLE AT <http://www.interreg-danube.eu/calls/calls-for-proposals/third-call-for-proposals>**

# What are the application steps?

---

Step 1: Expression of Interest (EoI)

Step 2: Application Form (AF)

- On line application through eMS system



**Maximum duration of projects:**  
**30 months**

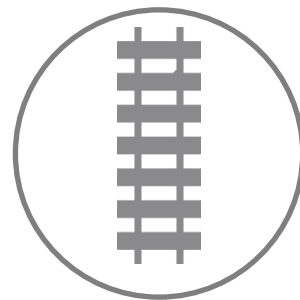
# Which PAs can be addressed?



**Innovative and  
socially responsible  
Danube Region**



**Environment and  
culture responsible  
Danube Region**



**Better connected  
and energy  
responsible Danube  
Region**



**Well governed  
Danube Region**



 *Opening of SO 4.1 is subject to approval of the programme budget reallocation by the EC.*

## Budget\* of the 3<sup>rd</sup> Call for Proposals in EUR

PA	ERDF	IPA	ENI MD	ENI UA	Total
PA1	13,463,630.97	795,801.87	594,479.00	648,471.95	<b>15,502,383.79</b>
PA2	16,460,009.81	974,337.27	743,098.00	810,590.70	<b>18,988,035.78</b>
PA3	11,068,880.71	671,049.92	520,168.50	567,413.00	<b>12,827,512.13</b>
PA4	9,918,396.26	858,974.77	625,000.00	625,000.00	<b>12,027,371.03</b>

***\* All amounts in the table are subject to EC approval.***

### **S.O.1.1. restricted to:**

Service innovation, with a focus on strengthening employment via innovative public policies (national or regional authorities should take the lead), and creative industries (with a strong accent on innovative urban regeneration via service hubs)

### **S.O.1.1 FURTHER USEFUL INFORMATION**

Specific attention should be given to innovation framework conditions in the field of sustainable and quality employment policies by designing and proposing innovative type of services able to lead to industrial transformation and future competitiveness. Service innovation should be seen in a strategic and integrated manner (quadruple helix approach) in order to contribute to new type of industries and restructure old ones.

Specific attention should be given to innovative framework conditions in the field of creative industries, especially in the field of new urban economies such as urban regeneration processes.



### **S.O.1.1 FURTHER USEFUL INFORMATION**

Note:

Under specific objective 1.1 the governing paradigm is the policy level, namely the framework conditions as described in the Cooperation Programme document.

### **S.O. 1.2 restricted to:**

Strengthening the capacity of the so-called support organisations (e.g. employment agencies, trade unions, labour market organisations) to provide innovative entrepreneurial training and education to individuals in the framework of the knowledge-based economy.

Developing innovative social services able to better meet social needs and to provide services in general interest.

### **S.O. 1.2 FURTHER USEFUL INFORMATION**

Specific attention should be given to the needs and challenges of the employment market by reinforcing the cross-disciplinary links among relevant players such as policy makers, education and training facilities, research sector, business and industry sector and labour market organisations, including employment agencies and trade unions. Their effort should build towards providing innovative entrepreneurial training and education systems to active individuals as part of the knowledge-based economy.

Specific attention should be given to social innovation and services able to better meet social needs in areas such as education and health or other similar domains of social interest and impact.

### **S.O. 1.2 FURTHER USEFUL INFORMATION**

Note:

Since this SO is pursued under PA1 (research and innovation), the accent falls on “*innovative learning systems*”. The broader fields of education, vocational education and training and lifelong learning without direct link to innovation are to be addressed under SO 4.1.

## **Thematic seminars**

**Bucharest (RO), 4<sup>th</sup> December 2018**

**Transport Ecological corridors**

**Prague (CZ), 14<sup>th</sup> December 2018**

**Water management and flood protection, Natural and cultural heritage, Energy**

**Stuttgart (DE), 19<sup>th</sup> December 2018**

**Innovation**

**Bratislava (SK), 15<sup>th</sup> January 2019**

**Governance**



# Key elements of DTP projects



## **DTP is a financing instrument**

One of the 107 Interreg Programmes 2014-2020  
(transnational, cross-border, interregional)

DTP 2014-2020 finances projects implemented by large transnational consortia aiming at improving the public policies and institutional cooperation in the Danube region.

## DTP is **NOT**:

- The Danube Strategy Programme!
- EU Strategy for the Danube Region!
- The only financing instrument for EUSDR!
- A Programme addressing Danube riparian areas only!
- A Programme for big infrastructure!
- A research Programme!
- A Programme aiming at mere networking!



## **Innovative and socially responsible Danube Region**

- 1.1: Improve framework conditions for innovation
- 1.2: Increase competences for business and social innovation



## **Environment and culture responsible Danube Region**

- 2.1: Strengthen transnational water management and flood risk prevention
- 2.2: Foster sustainable use of natural and cultural heritage and resources
- 2.3: Foster the restoration and management of ecological corridors
- 2.4: Improve preparedness for environmental risk management



## **Better connected and energy responsible Danube Region**

- 3.1: Support environmentally-friendly and safe transport systems and balanced accessibility of urban and rural areas
- 3.2: Improve energy security and energy efficiency

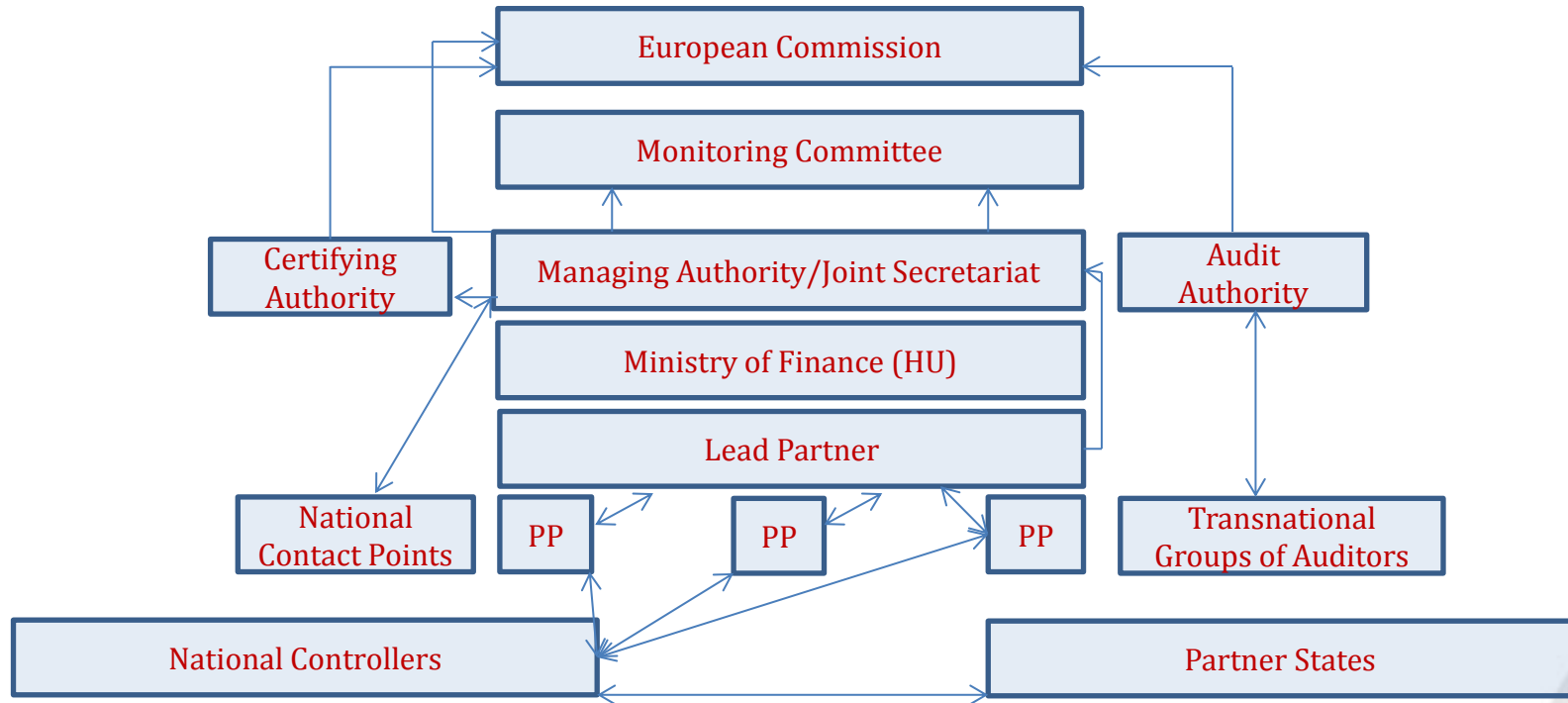


## **Well governed Danube Region**

- 4.1: Improve institutional capacities to tackle major societal challenges
- 4.2: *Support the governance and implementation of the EUSDR*



# Management structure



## **DTP supports joint cooperation projects which:**

- Develop institutional capacity and ensure knowledge transfer
- Pave the way to new investments
- Support the development of a common framework for policy implementation in various fields

## **DTP supports joint cooperation projects which:**

- Support policy harmonisation in various fields
- Develop innovative solutions to common problems

## Partnership requirements

- **Minimum three financing partners from **three different countries** of the programme area**
  
- **At least one from EU Member State of DTP area to act as **Lead Partner****
  
- **No max. limit for number of project partners**
  - Applicants Manual part II

- Local, regional, national **public bodies/ bodies governed by public law**
  - “body governed by public law” according to Article 2(1) of DIRECTIVE 2014/24
  - Including EGTCs (Article 2(16) of Regulation (EU) No 1303/2013)
- **International organisations** (under national (DTP Partner State) / international law);
  - Fulfil EU, programme and national requirements in terms of control, validation of costs and audits
- **Private bodies** (non-profit & profit, funded by private law)
  - Legal personality
  - Make available results of the project to general public
  - Apply principles of public procurement

- **Private non-profit bodies**
  - Can be LP, PP, ASP
- **Private profit oriented bodies (private enterprises)**
  - Cannot be Lead Partner
  - Private enterprises not eligible as IPA or ENI PP

**Private bodies** whose main scope of activities is limited to **project management, communication**, or other activities of **supporting character** cannot be PPs, but must be subcontracted



## Geographic eligibility

- Direct EU financing only for **PPs located in Programme area (including MD\* & UA\*)**
- Legal entities in **DE & UA outside Programme area**
  - Competent in their scope of action for eligible area
  - Activities for benefit of the Programme area
  - Fulfil general eligibility



# Type of Partners

Type of Partner	Location	Budget	Budget lines	
Directly financed partners	<b>LEAD PARTNER</b>	Only EU part of Programme area	Separate	All
	<b>ERDF PARTNER</b>	Only EU part of Programme area	Separate	All
	<b>IPA PARTNER</b>	Only Bosnia and Herzegovina, Montenegro, Serbia	Separate	All
	<b>ENI PARTNER</b>	Moldova and Ukraine	Separate	All
Indirectly financed partners	<b>Associated Strategic Partners (ASPs)</b>	<ul style="list-style-type: none"> <li>➤ EU countries</li> <li>➤ Non-EU countries of the Programme Area</li> </ul>	Part of a "sponsoring" ERDF PARTNER budget	TRAVEL and ACCOMODATION

**Applicants Manual Part 2. II.4.**

## Associated Strategic Partners (ASP)

**Added  
value for  
the  
partnership**

**EU countries  
Non-EU  
countries from  
eligible area**

**No budget**

# What type of funds do I have?

## ERDF

- PPs from EU MS
- ASPs

## IPA

- PPs from BiH, RS, ME

## ENI

- PPs from MD, UA



# How to develop a successful project?

- ... the project idea...
- Look for the most appropriate partners...
- **Develop the intervention logic...**
- Develop the workplan...
- Create synergies and capitalise...



# DTP key principles

---

- Real transnational character
- Result-oriented approach
- Sustainable development
- Durable and transferrable outputs
- Integrated territorial approach
- Qualitative partnership
- Efficiency in terms of mobilised resources

## the case of DanuBioValNet project (1<sup>st</sup> call, S.O.1.1)

## What to consider when applying?

Transnational  
dimension and  
territorial  
relevance

Coherence of  
the  
intervention  
logic

Project  
contribution  
to EUSDR

Durability and  
transferability  
of outputs

Composition  
of the  
partnership

DTP core principle → *result-orientation*

**Theory of change** → illustrates how and why a desired change is expected to happen in a particular context

*Intervention logic* → reflects the path of the project and steps leading to change

# Intervention logic

---

Transparent

Simple

Consistent

Sustainable

Easy to monitor and implement

TERMINOLOGY	DEFINITION
Main objective	Describes the <b>strategic and long term</b> change for the benefit of the target groups.
Specific Objective	Describes the <b>specific and immediate effects</b> of the project that can be realistically achieved within the implementation period.
Result	Constitutes the <b>immediate advantage</b> of carrying out the project, telling us about the benefit of using the project main outputs.
Output	What has actually been <b>produced</b> for the money given to the project. It can be captured by a <b>programme output indicator</b> , and directly contributes to the achievement of the project results. <i>E.g.: transnational strategy</i>
Deliverable	<i>Is a side-product or service of the project that contributes to the development of a project's main output.</i> <i>E.g.: country analysis of the status quo in a certain field (side product that is contributing to the strategy mentioned above)</i>

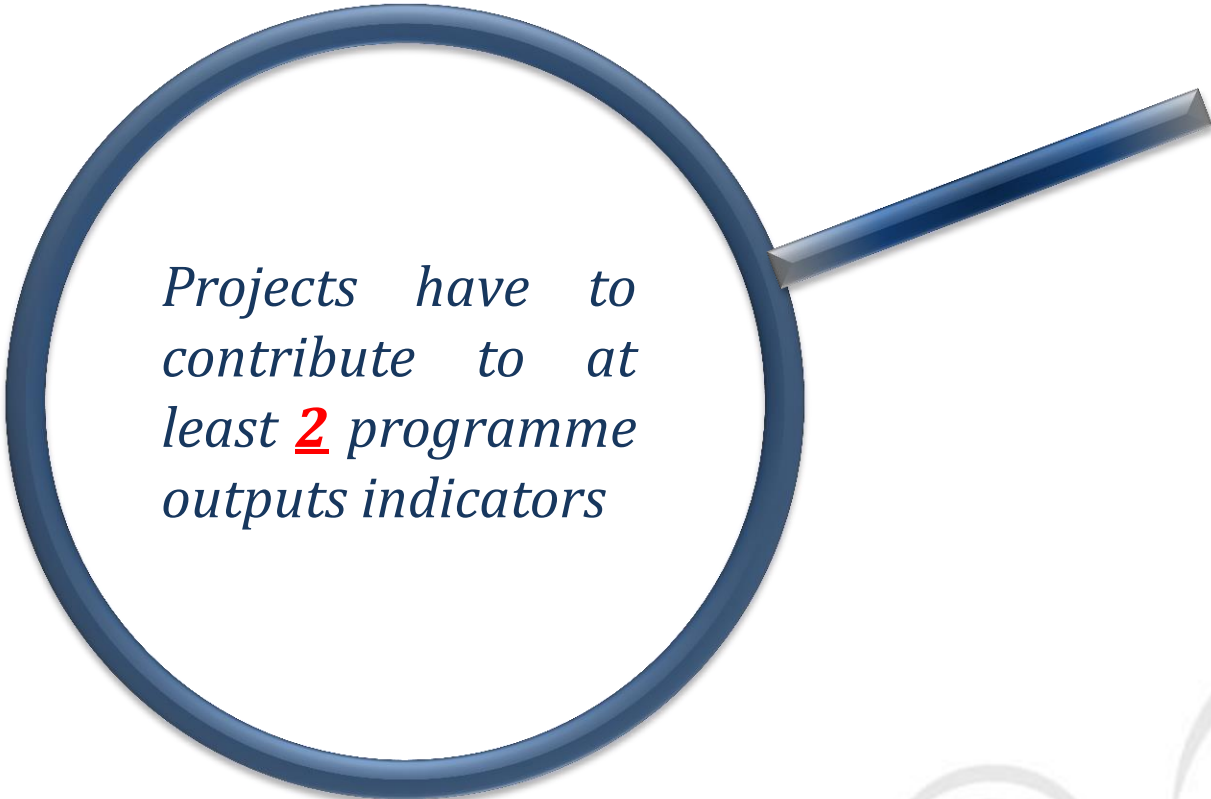


## OUTPUTS

- Main outcome of a content work package
- Contribute to achievement of the expected project result
- Follow output typology and linkage to programme output indicator

## DELIVERABLES

- Reflect the product of single activities or their intermediary steps



*Projects have to contribute to at least **2** programme outputs indicators*

## How to build the intervention logic?

1. Define the project **main objective** and **result** and link them to the programme intervention logic
2. Define the **project specific objectives** (max 3)
3. Define the **project outputs** and link them to the programme output indicators
4. Develop the **work plan**

# Typology of outputs

## Programme output indicators

### 1. Horizontal output indicator – mandatory for all the projects:

“documented learning interactions” - the process of acquiring/ enhancing institutional knowledge in transnational cooperation context through joint work aimed at a practical solution, transfer of know-how, capacity building, exchange of experience, peer-reviews or any other type of learning processes

!!! It is **expected** that each project develops, implements and documents at least **three** joint learning interactions

## *Practical hints – documented learning interactions:*

- *Should be jointly developed at transnational level*
- *Activities related to durability should be planned*
- *Newly gained skill should be used already for the benefit of the project*

**2. Specific programme output indicators** – are developed based on a typology of outputs pre-defined at programme level

## **A. Strategy and action plan**

- Starting point-**definition of joint problems/ challenges** of the participating countries/ regions
- Sets up clear mid and long term objectives and priorities reflecting also the common vision of the Danube Region in the specific field
- **Should aim at policy integration** in the Danube area in the selected fields and act as policy drivers below EU level but above national level



## Action plan:

- Breaks down the strategy goals and objectives into specific actions
- Should include the sequence of steps to be taken, or activities that must be performed, for a strategy to succeed

**!!! Each developed strategy/action plan, whether implemented or not, should be only counted once under the respective output indicator. Project management and communication-related strategies such as e.g. the project communication strategy should not be considered under this output indicator.**

## *Practical hints – Strategy and action plan:*

- *Plan also the implementation phase of the strategy/ action plan(s)*
- *Describe clearly the involvement of target groups in activities and deliverables*
- *Plan sustainability related activities (e.g. uptake of strategy/ action plan into policies)*

## B. Tools

- The **means for achieving a specific task**.
- Should be jointly developed at transnational level and be innovative.
- Can be **tangible** (physical or technical objects) and **intangible** (methods, concepts or services).

### *Examples of tools:*

- Databases, management concepts, ICT tools etc

## *Practical hints - tools:*

- *Clearly describe the main features of the tools*
- *Plan testing/ application through pilot actions, if relevant*
- *Plan sustainability related activities*

## C. Pilot action

- **Practical implementation of newly developed solutions** (e.g. services, tools, methods or approaches, even an investment)
- Has an **experimental nature** which aims at testing, evaluating and/or demonstrating the feasibility and effectiveness of a scheme
- A pilot action is **limited in its scope** (area, duration, scale etc.) and must be unprecedented in a comparable environment

### *Examples of pilot actions:*

- *Pilot implementation of innovative management models*
- *Pilot implementation of solutions for sustainable mobility concepts*
- *Pilot application/ testing of new technologies, services etc.*

## ***Practical hints – pilot actions:***

- *Results of pilot actions should be transferable. They should be used at transnational level in the project, e.g. to further feed into an output like a strategy or tool.*
- *Scope of the pilot is limited in terms of area, duration, scale etc.*

# Need help?



<http://www.interreg-danube.eu/contacts/national-coordination-and-contact-points>



**... and if you are successful**

## You have to...

- ... work and report activities
- ... spend and report costs
- ... ensure the quality of the outputs
- ... be available for controls and audits

## Danube Transnational Programme 2014 - 2020

### Postal address:

Ministry of Finance

Danube Transnational Programme Managing Authority | Joint Secretariat  
József nádor Tér 2-4, 1051 Budapest, Hungary

### Office address:

Danube Transnational Programme Managing Authority | Joint Secretariat  
Széchenyi István tér 7-8, 1051 Budapest, Hungary

[danube@interreg-danube.eu](mailto:danube@interreg-danube.eu)

[www.interreg-danube.eu](http://www.interreg-danube.eu)

