

DANTE

Improving Administrative Procedures and Processes for Danube IWT



Danube Transnational Programme

DANTE

KICK-OFF MEETING

17th February 2017

Danube Commission, Budapest



Project co-funded by European Union Funds (ERDF, IPA)



Opening – Welcome speeches

- Petar Margic (Director General, Secretariat of the Danube Commission)
- Manfred Seitz (General Secretary, Pro Danube International)



Setting the framework – Keynote speeches

- Desirée Oen (Policy Advisor to the European Coordinator Rhine-Danube / DG Move)
- Dusko Isakovic (International Sava River Basin Commission)
- Ana Leganel (Joint Secretariat – Danube Transnational Programme)



General framework of the DANTE Project – Needs, objectives & project structure

- Manfred Seitz (General Secretary, Pro Danube International)
- Robert Rafael (Senior Project Manager, Pro Danube International)



Danube Waterway: High Potential – Numerous Challenges

Potentials

- Danube serves an economic area of circa 90 mio. inhabitants
- Connects CE & SEE with growing markets in Black Sea Region
- Environmentally friendly transport corridor
- Can provide cost-effective logistics for land-locked industries ensuring competitiveness and jobs

Challenges

- Ensure standards for waterway maintenance
- Elimination of infrastructure bottlenecks
- Promotion of investment in Danube Ports and unlocking their economic potential
- Modernize Danube fleet
- ***Reduce logistics costs by elimination of administrative barriers***

Content



- General framework
 - EUSDR PA1A Targets & Projects & Working Group 6 – Administrative Processes
 - Green Deal for Danube River Transport
 - INDanube – Centre for Innovation Transfer
 - DTP Capitalisation Strategy
- Introduction to the DANTE project
 - Needs
 - Objectives
 - Structure



Green Deal: Rationale & Concept



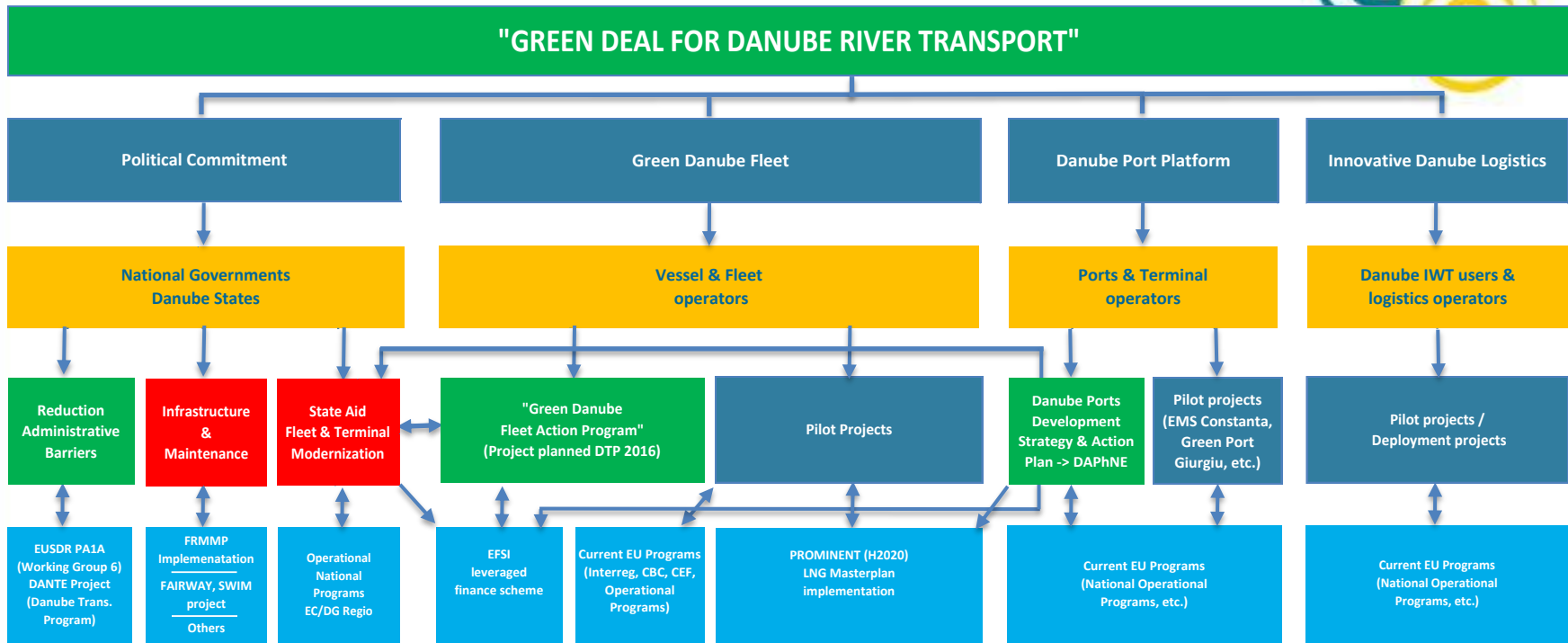
“Green Deal for Danube river transport”

- intensive, coordinated cooperation of public and private
- Improved efficiency & environmental performance of Danube logistics
- tangible results supporting sustainable economic growth

<< The roll-out of the Green Deal is done with the help of INDanube - Centre for Innovation Transfer in the Danube Region / EIBIP - European Inland Barging Innovation Platform; Project funded by EC/DG MOVE >>



The Green Deal Structure



EUSDR PA1A & Danube Corridor Plan & Danube Innovation Centre (INDanube / EIBIP)

- Legend:
- Pre-condition for innovation
 - Project platform in preparation by Pro Danube



Benefits & Implementation of Green Deal

- Green Deal provides platform for targeted long-term cooperation of Danube States – Private Sector – European Commission
- Supports key policy objectives in transport & environment / regional development / special focus on the greening of the waterborne transport system
- Ensures high leverage of public spending due to wide-scale engagement of private sector
- Embedded into EUSDR PA1A and related to Danube Corridor Plan
- Steered with help of Danube Transnational Program (DTP) projects – DANTE & DAPhNE started/ one planned for spring 2017
- Builds on successful pilot projects which testify viability of concept & produce concrete results to be up-scaled
- Green Deal will create many more valuable projects with tangible results contributing to economic growth, creating jobs and improve environmental performance of transport system of the region



Green Deal official launching event

Danube Transport Day European Parliament

7 September 2016, 16:00-18:00



Policy makers



Com. Corina Crețu



Herald Ruijters/ DG MOVE



Ionuț Mosteanu / RO MT

MEPs



Georgi Pirinski / BG



Gessine Meissner / DE



Ismail Ertug / DE

Key industry representatives from the Danube Region



W. Lüttner / Lüttner Cruises



M. Viefers / Rhenus Logistics



A. Stoian / TTS SA

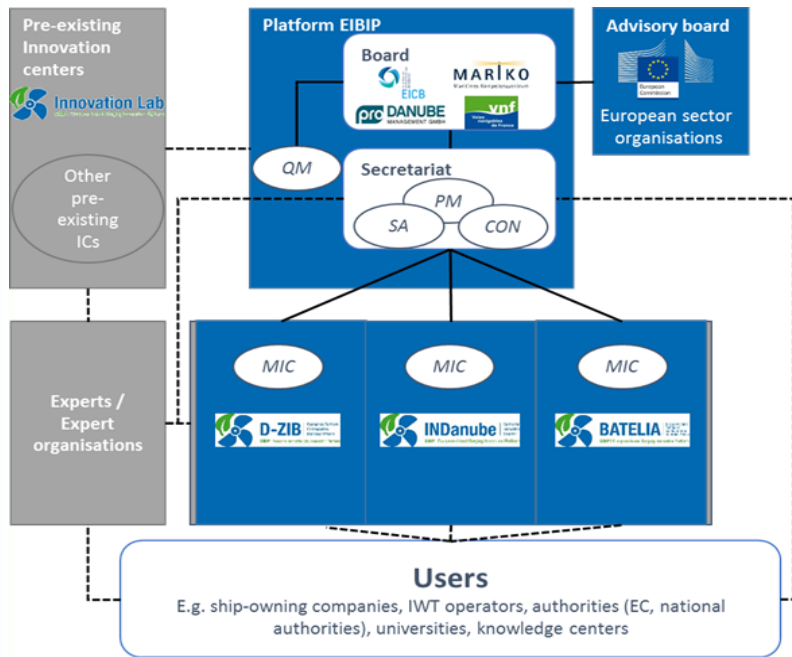


Project co-funded by European Union Funds (ERDF, IPA)



INDanube – Centre for Innovation Transfer

INDanube is part of an international network of three European Innovation Centres covering Germany, France and the Danube region which are forming the cooperation platform called EIBIP - European Inland Barging Innovation Platform and they support the innovation uptake by the inland waterway sector on the TEN-T Core Network.



Objectives

- collecting & managing all relevant technical and economic information on innovation related to IWT
- deliver critical mass & economies of scale with view to bringing (technological) innovation to real market circumstances by: **(1)** uniting technology suppliers, investors and (end)users; **(2)** raising their common interest by further aligning shared objectives; **(3)** implementing pilot innovation projects in the most promising areas of innovation as defined.

Supported by:



EIBIP overall structure

PM: Project manager; **SA:** EIBIP Secretariat Assistant

CON: Controller; **QM:** Quality manager

MIC: Manager Innovation Centre

Ongoing Project



INDanube – Dissemination tools offered



<https://indanube.eu/>



<https://www.facebook.com/INDanube/>



<https://www.linkedin.com/groups/8560850>



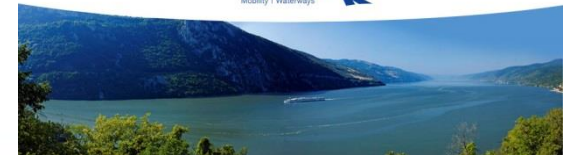
<https://twitter.com/INDanube>



DTP Capitalisation Strategy – Thematic Pole 7



- **DANTE:** [Improving Administrative Procedures and Processes for Danube IWT](#)
- **DAPhNE:** [Danube Ports Network](#)
- **DBS Gateway Region:** [Regional and Transport Development in the Danube-Black Sea Region towards a Transnational Multiport Gateway Region](#)
- **Danube STREAM:** [Smart, Integrated and Harmonized Waterway Management](#)
- **Danube SKILLS:** [Increased institutional capacity in Danube navigation by boosting joint transnational competences and skills in education and public development services](#)
- **Green Danube:** [Integrated transnational policies and practical solutions for an environmentally-friendly Inland Water Transport system in the Danube region](#)





Improving Administrative Procedures and Processes for Danube IWT (DANTE)

Danube Transnational Programme 2014 – 2020



How to deal with administrative barriers?

- Identify administrative barriers for IWT on Danube and tributaries and responsible authorities
- Set up an efficient and permanent monitoring system for collecting users experiences (supported by online tools)
- Set up and operate a working platform with responsible authorities in order to adapt administrative procedures and processes with the objectives to reduce administrative efforts and costs for waterway users
- Identify good practices and guidelines for effective administration of IWT activities
- Promote stronger harmonized procedures and processes of authorities effecting IWT transport on Danube and navigable tributaries



Focus on the objectives of the Danube Region Strategy



Objectives of the project

- Improve administrative procedures and reduce bureaucratic processes as well as related charges and fees for IWT on Danube and navigable tributaries
- Cooperate with public authorities to develop and implement simplified administrative procedures and processes
- Reduce time losses and costs caused by unnecessary administrative regulations and processes for Danube businesses
- Eliminate/Reduce red tape and abuse of administrative power
- Strengthen the competitive position of companies, support economic growth and the creation of jobs in the region by increased efficient public administration
- Introduce stakeholder consultation procedures and processes in legal and regulatory acts of public administration relevant for IWT
- Harmonize regulations and administrative processes for transport and transshipment operations (“Same River-Same Rules” concept)



Areas of activities

Procedures and processes of the following national authorities will be analyzed and monitored:

- Border Police and Tax & Customs authorities *)
- Navigation authorities (traffic control authorities)
- Port authorities (Harbor master) /administrations
- Waterway and Canal administrations
- Other authorities (such as Health Control, Disaster Management, Law Enforcement/Water Police, etc.) which impose administrative barriers to the movement of inland vessels and the transportation and transshipment of goods on the river and in the ports

*) the PA1A/EUSDR technical secretariat via donau has recently carried out an investigation on border and customs procedures and processes and has developed a model process for border crossings. The work in this area will be updated and used as basis for the structured dialogue in the relevant working table of the PA1A/EUSDR working group on administrative processes



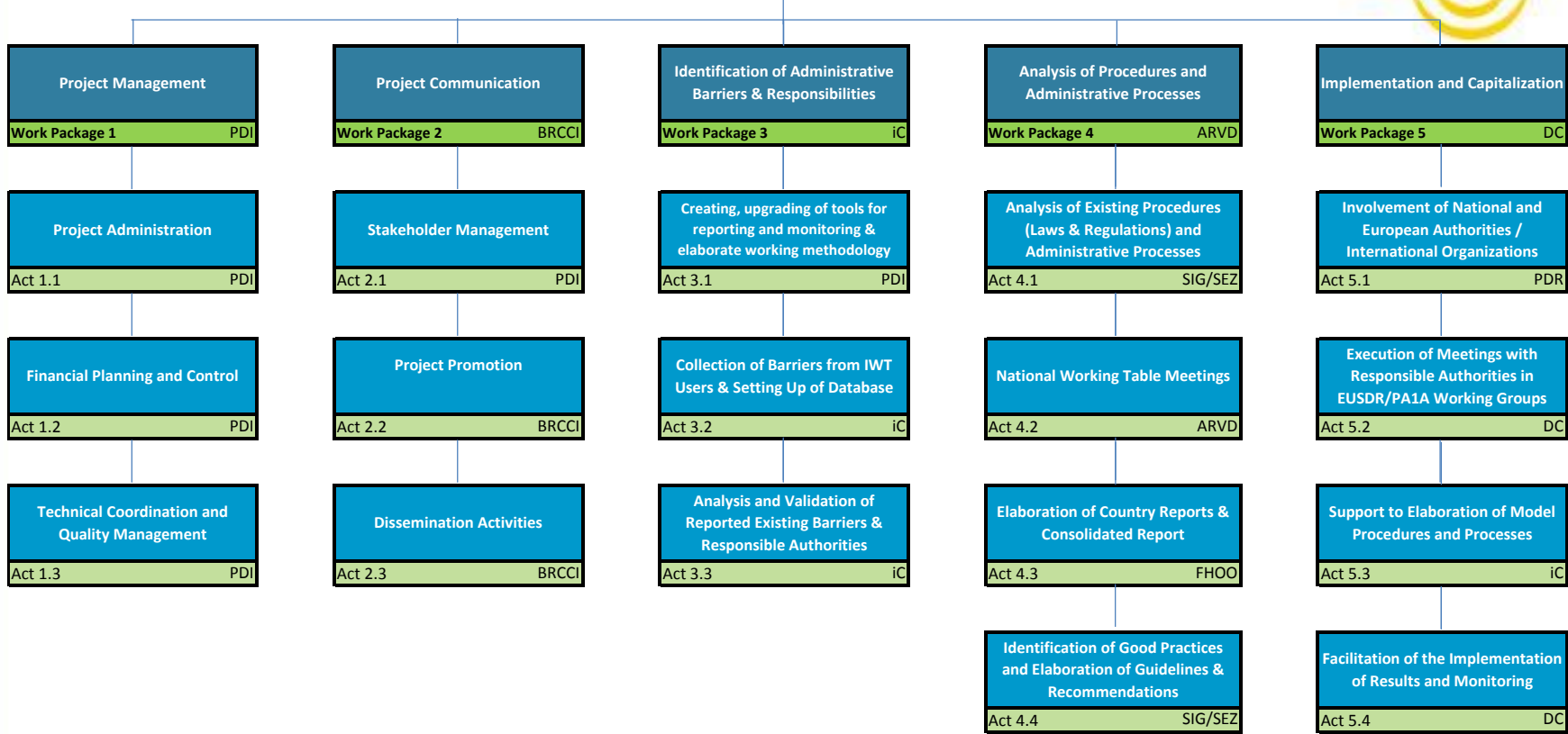
Work approach

- Identify barriers in each country along the Danube and its main navigable tributaries
- Assign barriers to responsible authorities
- Inform responsible ministries / EC services
- Set up workshops with relevant authorities at national level
- Discuss with authorities the identified problems
- Elaborate concrete solutions for improvement / recommendations
- Collaborate with PA1A secretariat for setting up of "working tables" as part of the working group dealing with administrative processes to create transnational working level
- Elaborate necessary improvements in procedures and processes
- Establish permanent monitoring to ensure implementation of agreed changes
- Create, upgrade and maintain related IT monitoring tools
- Disseminate results to targeted stakeholder groups



Work breakdown structure - overview

Improving Administrative Procedures and Processes for Danube IWT (DANTE)





Work packages (1)

- **WP 1 Project management**
 - Act 1.1 Project administration
 - Act 1.2 Financial planning and control
 - Act 1.3 Technical coordination and quality management
- **WP 2 Project communication**
 - Act 2.1 Stakeholder management
 - Act 2.2 Project promotion
 - Act 2.3 Dissemination activities
- **WP 3 Identification of administrative barriers & responsibilities**
 - Act 3.1 Creating, upgrade of tools for reporting and monitoring & elaborate working methodology
 - Act 3.2 Collection of barriers from IWT users & setting up of database
 - Act 3.3 Analysis and validation of reported existing barriers & responsible authorities



Work packages (2)

- **WP 4 Analysis of procedures and administrative processes**
 - Act 4.1 Analysis of existing procedures (laws & regulations) and administrative processes
 - Act 4.2 National Working Table Meetings
 - Act 4.3 Elaboration of country reports & Consolidated report
 - Act 4.4 Identification of good practices and Elaboration of guidelines & recommendations
- **WP 5 Implementation and capitalization**
 - Act 5.1 Involvement of national and European authorities/international organizations
 - Act 5.2 Execution of meetings with responsible authorities in EUSDR/PA1A working groups
 - Act 5.3 Support to elaboration of model procedures and processes
 - Act 5.4 Facilitation of the implementation of results and monitoring



Timeline of project activities

DANTE GANTT																																
Year		2017												2018												2019						
Calendar month		Jan	Feb	Mar	Apr	May	Jun	Jul	Aug	Sep	Oct	Nov	Dec	Jan	Feb	Mar	Apr	May	Jun	Jul	Aug	Sep	Oct	Nov	Dec	Jan	Feb	Mar	Apr	May	Jun	
WP	Project month	1	2	3	4	5	6	7	8	9	10	11	12	13	14	15	16	17	18	19	20	21	22	23	24	25	26	27	28	29	30	
WP1	Project management																															
1.1	Project administration	1	2	3	4	5	6	7	8	9	10	11	12	13	14	15	16	17	18	19	20	21	22	23	24	25	26	27	28	29	30	
1.2	Financial planning and control	1	2	3	4	5	6	7	8	9	10	11	12	13	14	15	16	17	18	19	20	21	22	23	24	25	26	27	28	29	30	
1.3	Technical coordination and quality management	1	2	3	4	5	6	7	8	9	10	11	12	13	14	15	16	17	18	19	20	21	22	23	24	25	26	27	28	29	30	
WP2	Project communication																															
2.1	Stakeholder management	1	2	3	4	5	6	7	8	9	10	11	12	13	14	15	16	17	18	19	20	21	22	23	24	25	26	27	28	29	30	
2.2	Project promotion	1	2	3	4	5	6	7	8	9	10	11	12	13	14	15	16	17	18	19	20	21	22	23	24	25	26	27	28	29	30	
2.3	Dissemination activities	1	2	3	4	5	6	7	8	9	10	11	12	13	14	15	16	17	18	19	20	21	22	23	24	25	26	27	28	29	30	
WP3	Identification of administrative barriers & responsibilities																															
3.1	Creating, upgrading of tools for reporting and monitoring & elaborate working methodology	1	2	3	4	5	6							13	14								21	22								
3.2	Collection of barriers from IWT users & setting up of database			3	4	5	6	7	8	9	10	11	12	13	14	15	16	17	18	19	20	21	22	23	24	25	26					
3.3	Analysis and validation of reported existing barriers & responsible authorities							7	8	9						15	16	17						23	24	25	26					
WP4	Analysis of procedures and administrative processes																															
4.1	Analysis of existing procedures (laws & regulations) and administrative processes	1	2	3	4	5	6																									
4.2	National Working Table Meetings		2	3	4	5	6	7						12	13	14	15															
4.3	Elaboration of country reports & Consolidated report							7	8	9	10	11	12	13	14	15	16	17														
4.4	Identification of good practices and Elaboration of guidelines & recommendations													13	14	15	16	17	18	19	20	21	22	23	24							
WP5	Implementation and capitalization																															
5.1	Involvement of national and European authorities/international organizations			3	4	5	6	7	8	9	10	11	12	13	14	15	16	17	18	19	20	21	22	23	24							
5.2	Execution of meetings with responsible authorities in EUSDR/PA1A working groups			3	4	5				9	11						16	18				21	22					28	29			
5.3	Support to elaboration of model procedures and processes													13	14	15	16	17	18	19	20											
5.4	Facilitation of the implementation of results and monitoring																						21	22	23	24	25	26	27	28	29	30

National Awareness Workshops serving to call in the relevant authorities / organizations and to discuss the local problems, shortcomings and requirements that can be improved and harmonized, resulting in the *Draft Requirement & Improvement Documents*

Transnational workshops by 4 thematic themes to start the clearing and harmonization activities of the requirements

National Awareness Workshops / Follow-up of the previous meetings and works resulting in *National Arrangement Documents*

Overall Transnational Workshop to coordinate and align final results and outcomes



Partnership Structure – Covering the whole Danube River and the Sava

Partners: associations of port operators, barge operators, inland waterway logistics operators, IWT promotion organization, other business organizations, relevant universities, consultants, etc.

ERDF Partners:

- Pro Danube International
- Danube Commission
- Steinbeis Innovation gGmbH, Steinbeis-Europe-Center / DE
- iC consulenten ZT GesmbH / AT
- University of Applied Sciences Upper Austria (FHOO)
- Waterborne Transport Development Agency (ARVD) / SK
- Slovak Shipping and Ports JSC / SK
- Hungarian Shipping Federation (MAHOSZ)
- Hungarian Federation of Inland Waterway Freight Forwarders (MBFSZ)
- Romanian Ministry of Transport
- Romanian River Ship Owners and Port Operators Association (AAOPFR)
- Pro Danube Romania
- Constanta Port Business Association
- Port Authority Vukovar
- Bulgarian-Romanian Chamber of Commerce and Industry

IPA Partner:

- Shipmasters Association of Serbia

Associated Strategic Partners:

- International Sava River Basin Commission
- Rhenus Logistics Austria GmbH
- Hungarian Federation of Danube Ports
- BRODOKOMERC NS d.o.o. / RS
- Port BULMARKET EAD / BG
- Union of Romanian Inland Ports
- Danube Cruises Romania srl
- Danube Logistics SRL / MD
- Ministry of Maritime Affairs, Transport and Infrastructure
- Ministry of National Development / HU
- State Enterprise Ukrainian Sea Ports Authority
- Ministry of Transport, Construction and Regional Development of the Slovak Republic

Project at a glance (1/2)





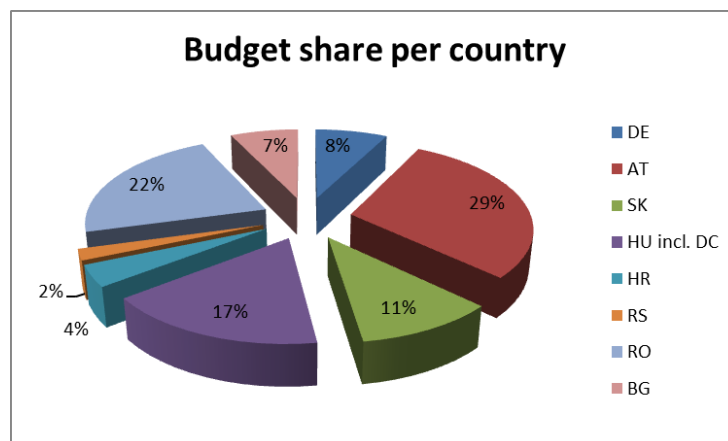
Project at a glance (2/2)

GOOD PRACTICES		TRANSNATIONAL MEETINGS
	Germany Austria Slovakia Hungary Croatia Serbia Romania Bulgaria	
Border Police and Tax & Customs authorities	Proposed Action holder: Danube Commission	
	External peer expert for each country to be selected during the roll-out	
Navigation authorities (traffic control authorities)	Proposed Action holder: Austria – PDI	
	External peer expert for each country to be selected during the roll-out	
Port authorities (Harbor master) /administrations	Proposed Action holder: Hungary – MAHOSZ	
	External peer expert for each country to be selected during the roll-out	
Waterway and Canal administrations	Proposed Action holder: Romania – PDR	
	External peer expert for each country to be selected during the roll-out	
Other authorities	Proposed Action holder: Bulgaria – BRCCI	
	External peer expert for each country to be selected during the roll-out	
NATIONAL WORKING TABLES		
REQUIRED CHANGES		



Project properties

- Duration of the project: 30 months from January 2017 to June 2019
- Total budget: 1,982,786 EUR
- ERDF Contribution: 1,650,134.75 EUR
- IPA Contribution: 35,233.35 EUR





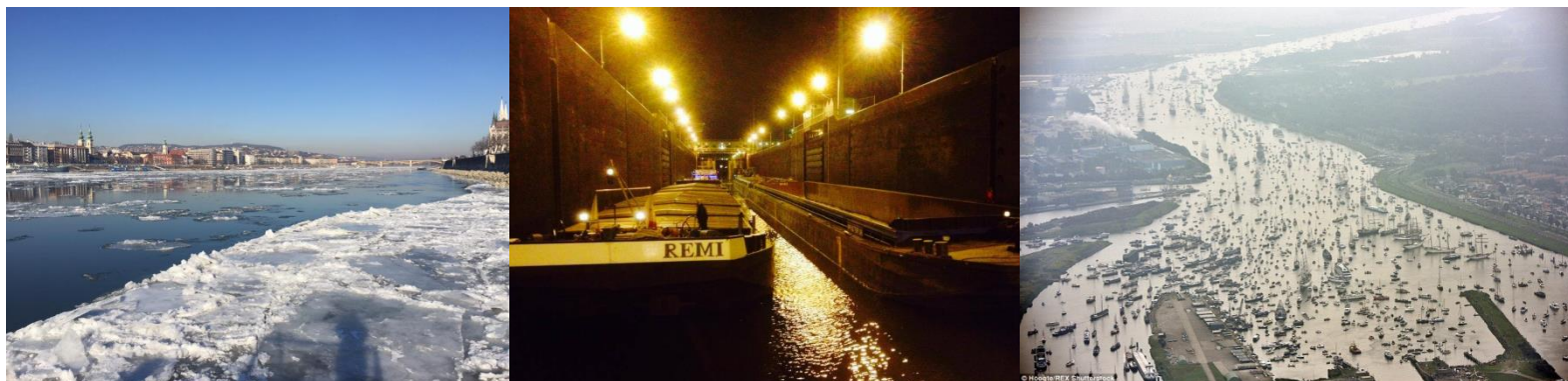
Building on existing projects & initiatives such as....

- Study on administrative and regulatory barriers in the field of inland waterway transport (NEA 2008)
- PLATINA Sub-work package 1.2 - Monitoring administrative barriers
- DARIF in the frame of EUDRS Priority Area 11- Security
- World Bank Initiative on reducing administrative barriers in Danube transport
- Work of technical secretariat EUSDR PA1A on Border Control Model Processes
- EC objective and initiatives addressing better governance and increase of administrative capacity
- PDI Concept "Same River – Same Rules"
- PDI Policy initiative "Green Deal for Danube River Transport"



Summary & Outlook

- 30-months project to come up with simplified – harmonised – digitalised procedures and processes for Danube IWT administration
- Danube IWT Administration Strategy with the related action plan
- DANTE Platform – Project+ to monitor and facilitate the implementation





Thank you for your attention!



Manfred Seitz
Robert Rafael
Pro Danube International
seitz@prodanube.eu
rafael@prodanube.eu



EU SDR Priority Area 1a – Working Group on Administrative processes

- Simon Hartl (Priority Area 1a “inland waterway” of the EU’s Strategy for the Danube Region)



Coffee break (30 min)



Introduction of the DANTE work packages

- WP3 Identification of Administrative Barriers & Responsibilities (iC Consulenter ZT GmbH)
- WP4 Analysis of Procedures and Administrative Processes (ARVD)
- WP5 Implementation and Capitalization (Danube Commission)



Presentation of the concept of the Transnational IWT Barrier Reporting Tool

- Pro Danube International

DANTE

Improving Administrative Procedures and Processes for Danube IWT



Danube Transnational Programme

DANTE

Concept of the
Transnational IWT Barrier
Reporting Tool

*17th February 2017,
Budapest*





Administrative barriers – Electronic Reporting Tool

- Objectives in line with the vision of “Same River – Same Rules”
 - To provide a tool for the stakeholders of Danube navigation:
 - » to report administrative barriers that they have experienced
 - » to name positive experiences
 - Sound database is pre-condition for putting lights on barriers
 - Will be the basis for interventions / further actions



www.prodanube.eu/administrativebarriers

Administrative barriers – Electronic Reporting Tool



- **Available languages**
 - Default: English
 - Translation to Danube languages will be done by the DANTE partners
- **Registration**
 - Registration is open for all other stakeholders (with a valid email address)

pro DANUBE INTERNATIONAL about us activities members services contact

Electronic Reporting Tool for Administrative Barriers

Pro Danube International (PDI) created this website under its domain to provide a tool for the stakeholders of Danube navigation to report administrative barriers that they have experienced and to name positive experiences. The data will be analysed by PDI and further utilized to eliminate these barriers in order to ensure the smooth and predictable way of the logistic processes using the river Danube. The initiative is part of PDI's campaign on administrative barriers and follows the PDI vision of "Same River – Same Rules"

Username
rafael@prodanube.eu

Password
.....

User Login New Registration

Forgot password?

Interreg **Danube Transnational Programme**
DANTE

The transnational IWT barrier reporting tool is an output of the project DANTE – Improving Administrative Procedures and Processes for Danube IWT. Project co-funded by European Funds (ERDF, IPA). More information about the project is available at: www.interreg-danube.eu/dante

copyright 2017 - Pro Danube International - Handelskai 265, 1020 Vienna/Austria - office@prodanube.eu print - rss-feed - imprint



Administrative barriers – Electronic Reporting Tool

- **Requirements**

- smooth accessibility from different platforms and devices
- proper data protection and security
- registration of new user
- multi-language usage
- clear indication of location and time when and where the barrier / good practise is experienced
- clear indication of the organisation with which the event was faced
- description of the barrier / good practise
- possibility to upload supporting documents (e.g. administrative forms, data sheets, photos etc.)

Administrative barriers – Electronic Reporting Tool



- **Functionalities**

- Identification of the category of the reporting person
- Selection interface on language
- Selection interface:
 - “Blaming a barrier”
 - “Naming positive experience”



- **Timeline**

- Specification & Deployment in first half of 2017
- Start-up in Q3 / 2017



Electronic Reporting Tool for Administrative Barriers

Blaming a barrier

Select the organisation with which the barrier was faced*

Please choose an item below

Country in which the case was faced*

Please choose an item below

Location of the case (city and / or river kilometre)*

e.g. Mohacs 1447,1

The date when the case was faced:*

dd/mm/yyyy

time, if known

--:--

Please describe the case that you have encountered:*

e.g. Ship 'NAME' with destination Serbia had to wait 6 hours due to the customs employee and harbour master

You can provide us with additional data via upload: (max. 2MB)

No file chosen

*fields are mandatory

Submit



The transnational IWT barrier reporting tool is an output of the project DANTE - Improving Administrative Procedures and Processes for Danube IWT. Project co-funded by European Funds (ERDF, IPA). More information about the project is available at: www.interreg-danube.eu/dante



Thank you for your attention!



Robert Rafael
Pro Danube International
rafael@prodanube.eu



How does DANTE reach the stakeholders – stakeholders – Introduction of the communication activities

- Bulgarian-Romanian Chamber of Commerce and Industry



Questions & answers



Closing remarks

- Petar Margic (Director General, Secretariat of the Danube Commission)
- Manfred Seitz (General Secretary, Pro Danube International)



Networking lunch