

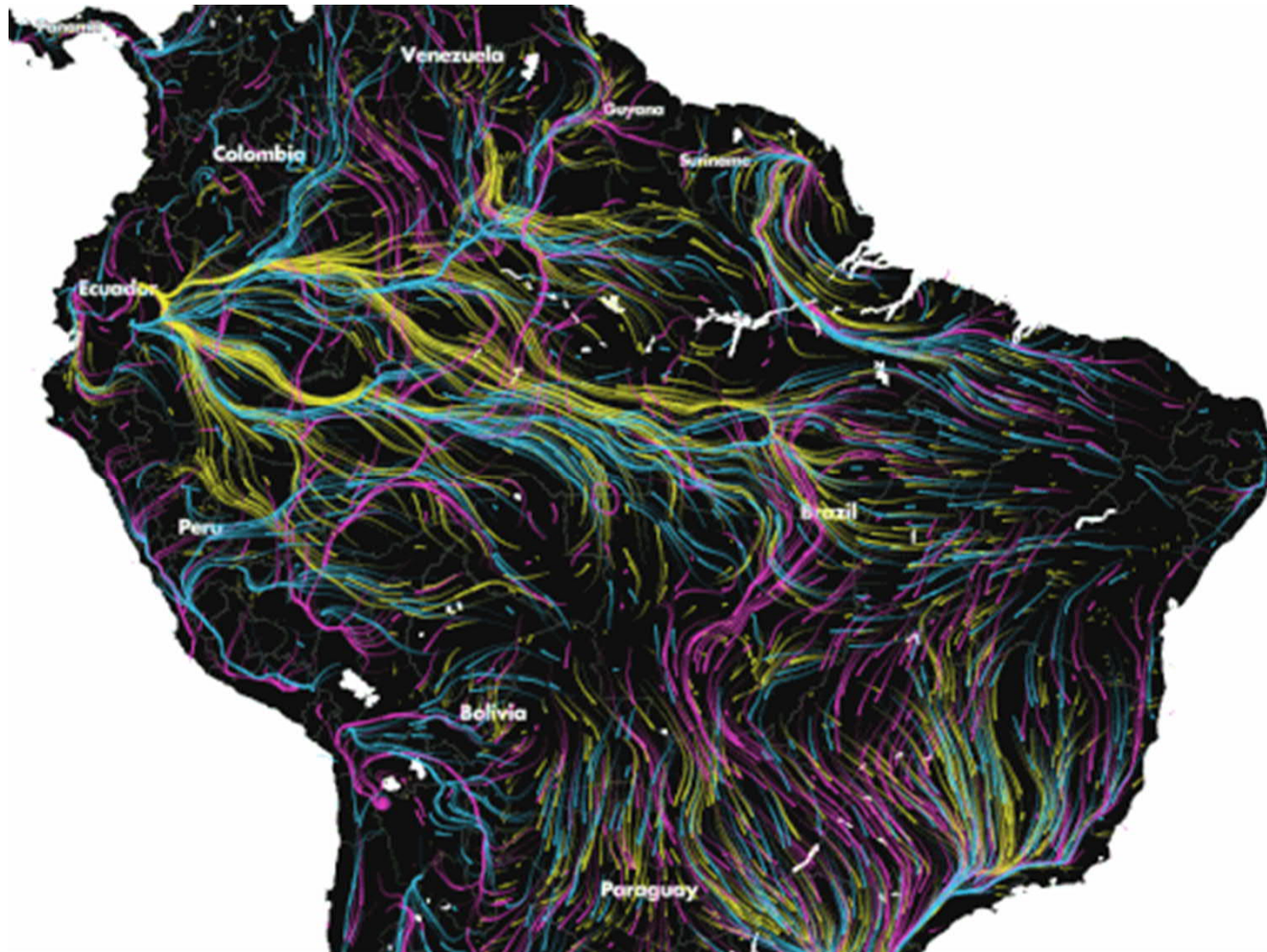


The global state of
ecological
connectivity and
efforts to preserve it

Wendy Elliott,
Deputy Leader, Wildlife
WWF International

BBC





MIGRATIONS IN MOTION

As climate change alters habitats and disrupts ecosystems, where will animals move to survive? And will human development prevent them from getting there?

This map shows the average direction mammals, birds, and amphibians need to move to track hospitable climates as they shift across the landscape.

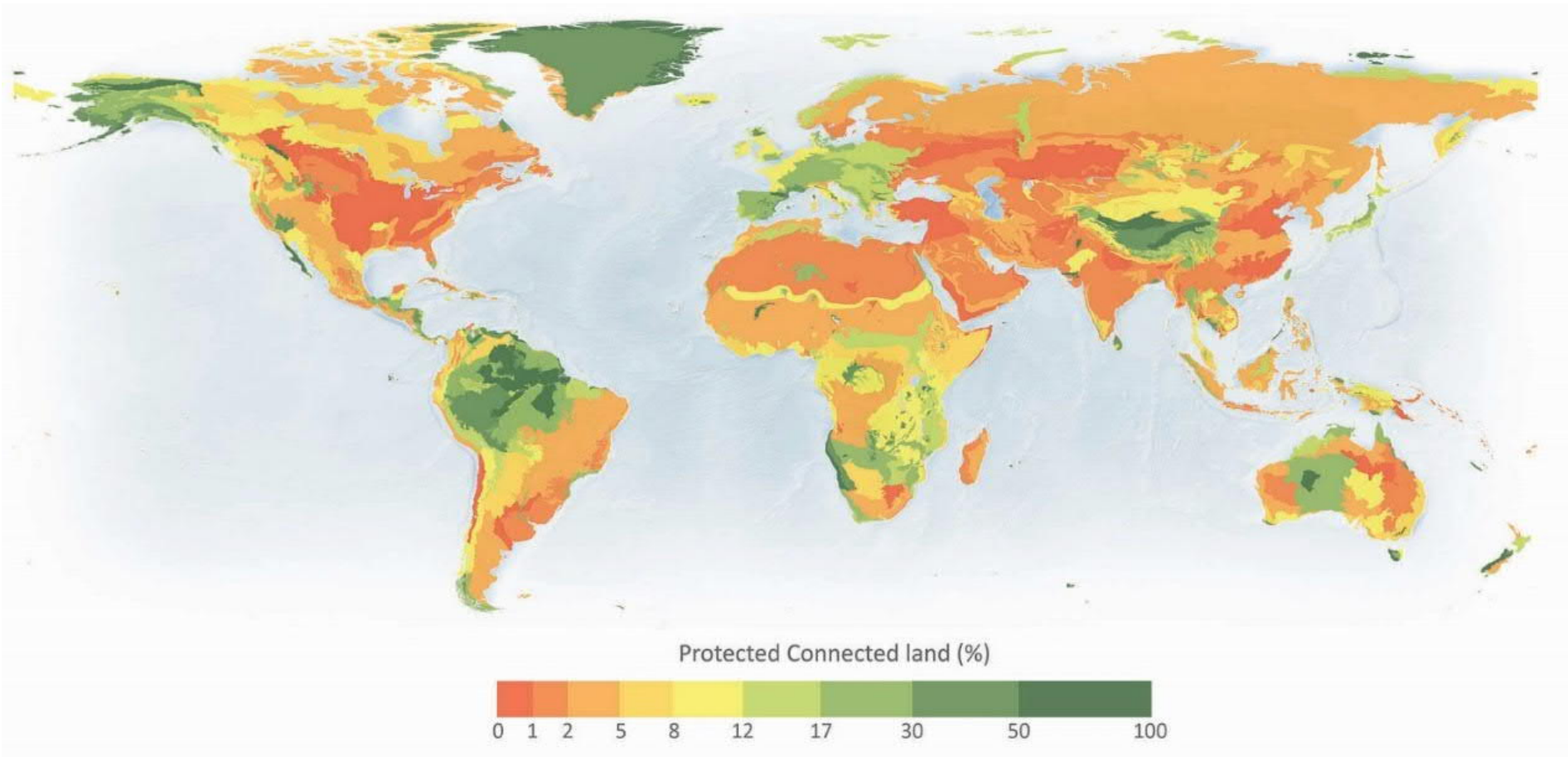
The Nature Conservancy 
Protecting nature. Preserving life.

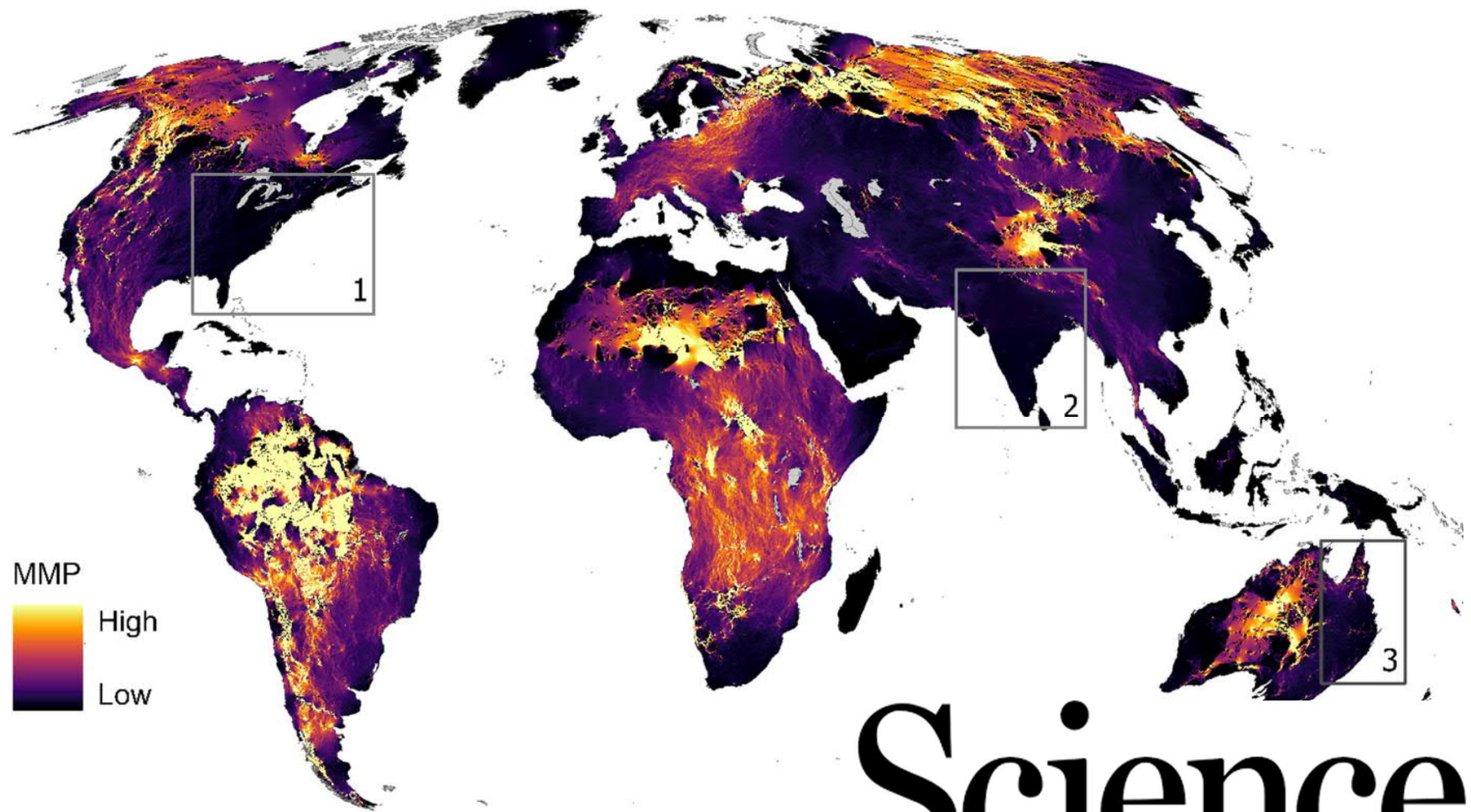
[Prev](#)



[Next](#)







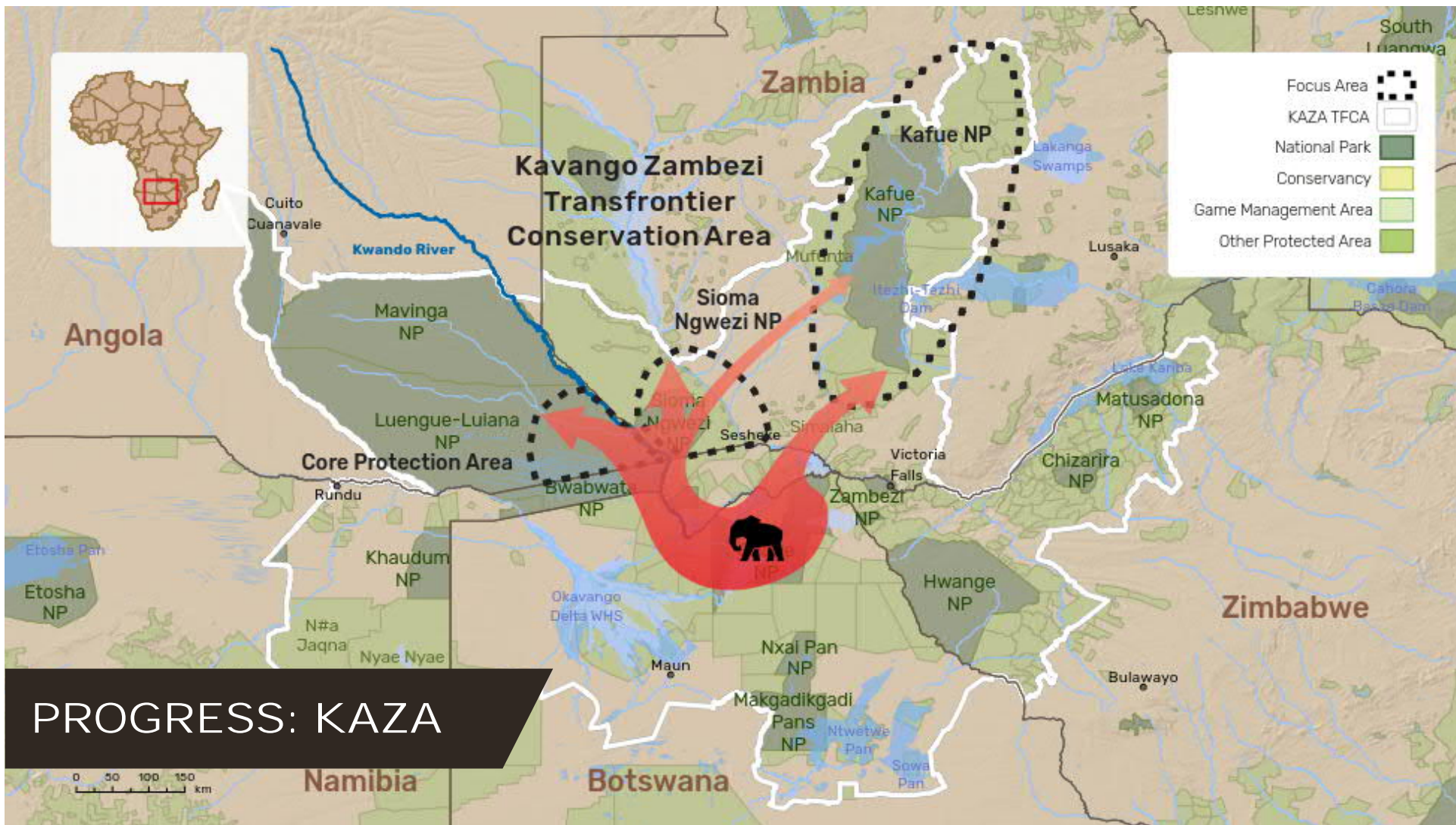
Science

A. Brennan, R. Naidoo, L. Greenstreet et al. 2022. Functional connectivity of the world's protected areas. *Science* 376, 1101–1104

PROGRESS: Bhutan

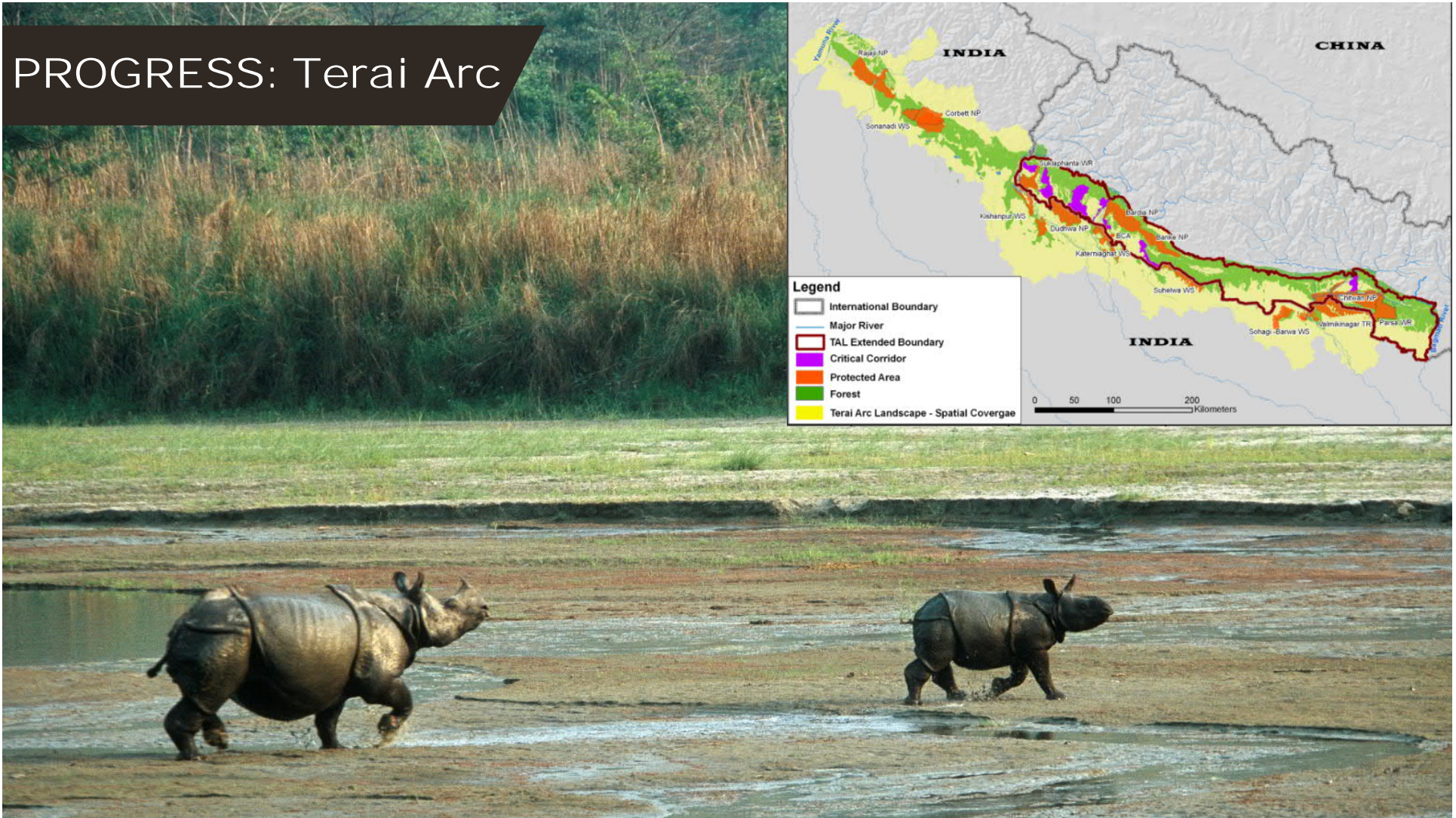
- Protected in both 2010 and 2018
- Protection loss 2010 - 2018
- Protection gain 2010 - 2018

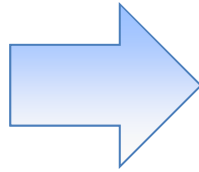




PROGRESS: KAZA

PROGRESS: Terai Arc





MOMENTUM: Policy



United Nations



General Assembly

Nature knows no borders



**United Nations
Climate Change**



**Convention on
Biological Diversity**

MOMENTUM: Private sector



"Businesses should always avoid impacts that would individually or cumulatively, directly or indirectly ... sever crucial ecological connectivity functions in a land/seascape"



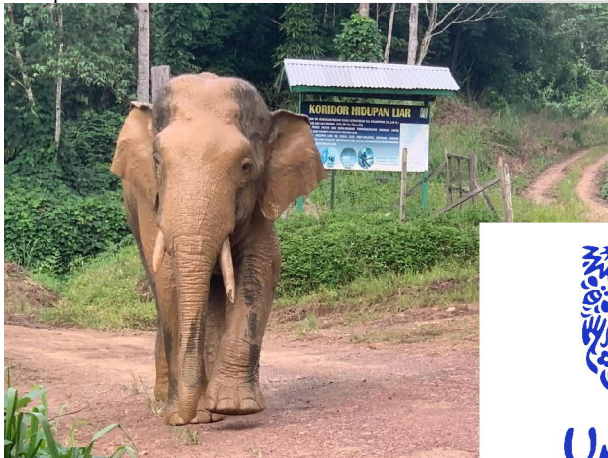
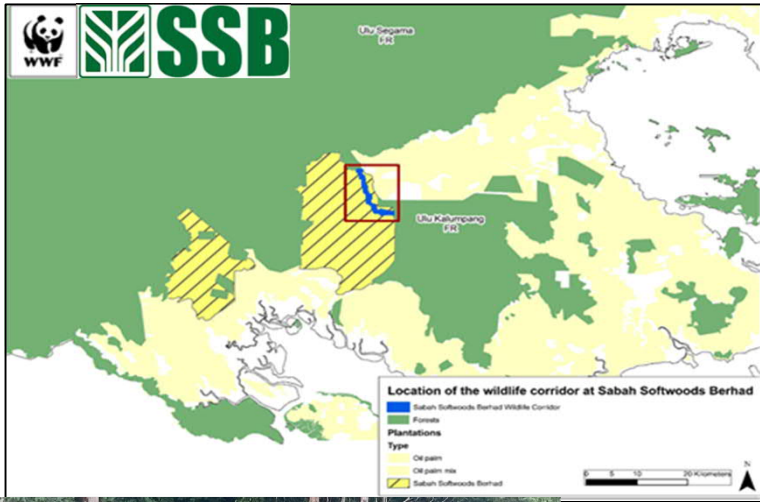
"Implement measures to minimize habitat fragmentation, such as biological corridors."



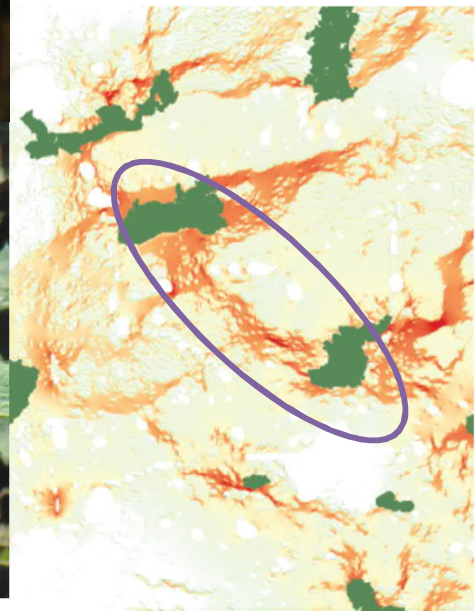
"Project design for maximum ecological connectivity"

Would require companies to disclose their impacts on "the physical connection between ecosystems (eg green corridors)"

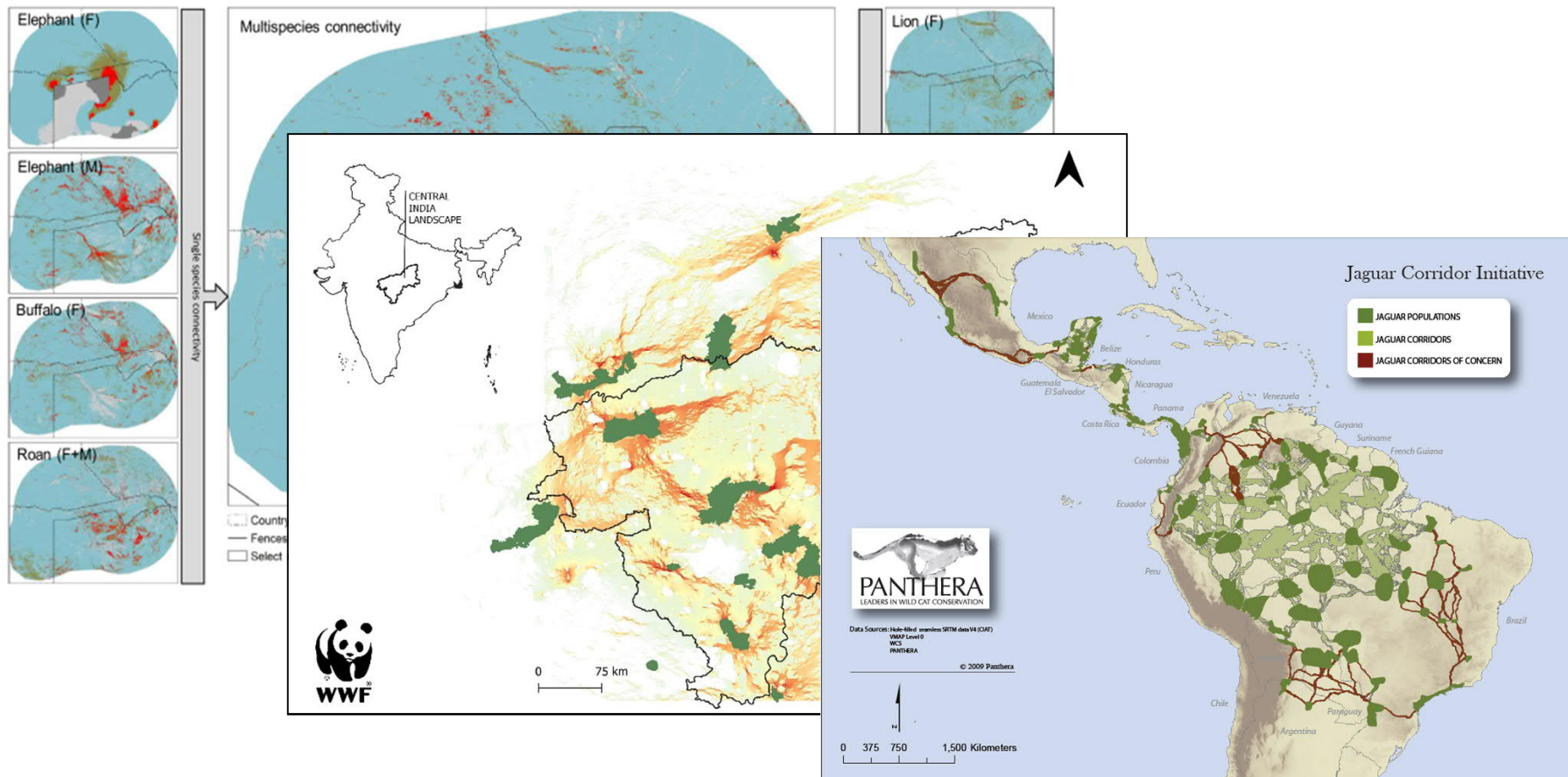




H&M



MAPPING Connectivity

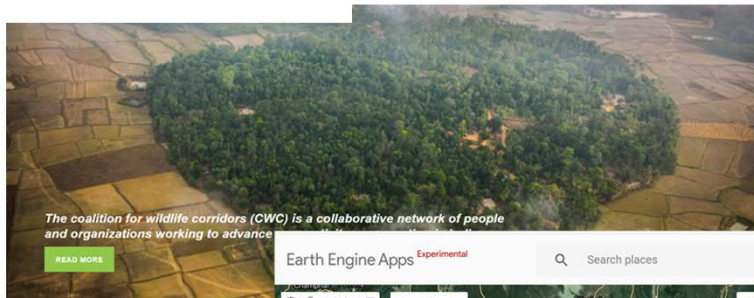


MAPPING Connectivity



**COALITION
FOR WILDLIFE
CORRIDORS**

ABOUT US ▾ RESOURCES ▾ INITIATIVES ▾ CALL FOR ACTION



The coalition for wildlife corridors (CWC) is a collaborative network of people and organizations working to advance

[READ MORE](#)



WCMC

Earth Engine Apps Experimental

Wildlife Corridor Mapping Tool

[Click here to learn about this tool.](#)

Use the drawing tools on the map to create the following geometries.

1. Study Area Boundary (polygon) ?
Study area boundary path name
2. Land Cover Reference Locations (2+ polygons) ?
Cost image path name

Name	Travel Cost		
3. Linear Features (0+ lines) ?

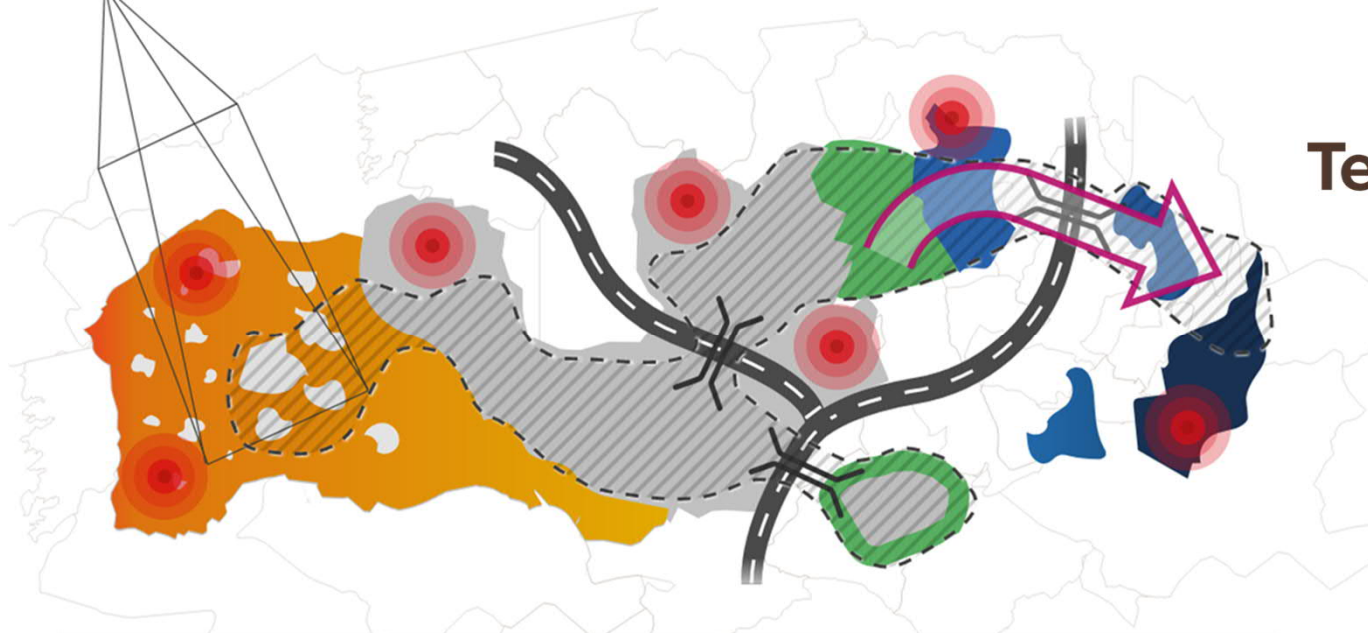
Google



MAPPING Connectivity



Monitor. Project. Prioritize. TerrAdapt's monitoring and projection layers provide insight into spatial and temporal dynamics of habitat and connectivity for target species and ecosystems of Cascadia. TerrAdapt's prioritization layers can help managers decide where to invest in new protected areas, habitat restoration, and barrier mitigation to improve the ecological functioning and resilience of regional habitat networks.



WILDLIFE CONNECT



PROTECT linkages MANAGE for wildlife flow RESTORE what we have lost



CENTER
for
**LARGE LANDSCAPE
CONSERVATION**



THEORY OF CHANGE

^

^

.....

A sunset scene in a savanna. The sky is a gradient of orange and yellow, with a bright sun low on the horizon. Several baobab trees are silhouetted against the sky. A bird is in flight in the center of the image. A black rectangular box is overlaid on the left side of the image, containing the text "Thank you" in white.

Thank you