

# lifelineMDD

How to raise stakeholder engagement in a biosphere reserve –  
experiences from Elbe-river UNESCO biosphere reserve

Johannes Prüter

German MAB-NK  
Elbe river UNESCO biosphere reserve (ret.)

Event    Session 6: Governance

## Elbe river UNESCO biosphere reserve - largely Natura 2000 sites



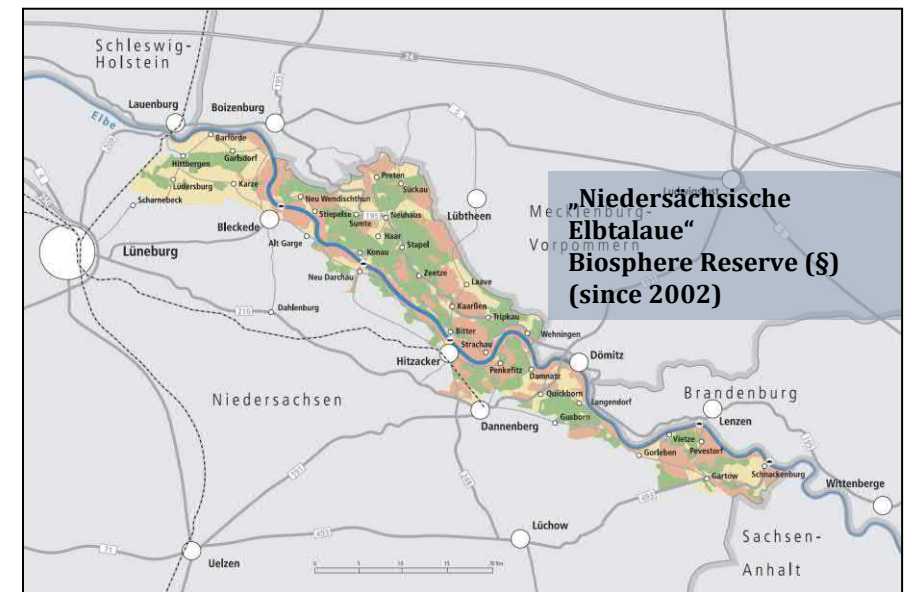
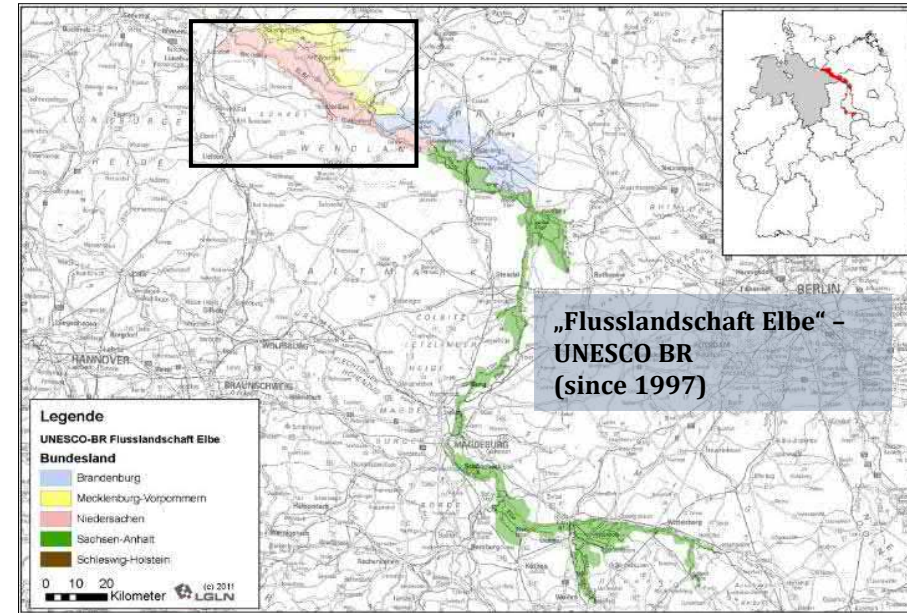
Foto: Damschen

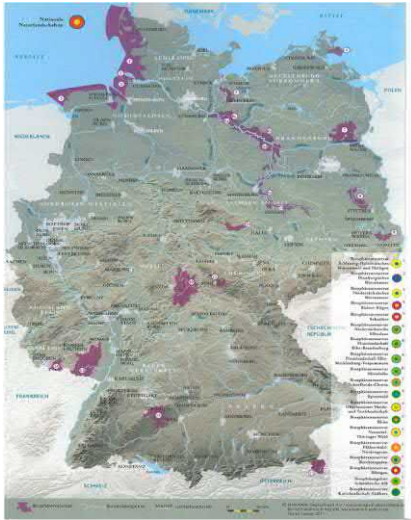
Fotos:  
J. Borris,  
D. Damschen,  
J. Wübbenhorst




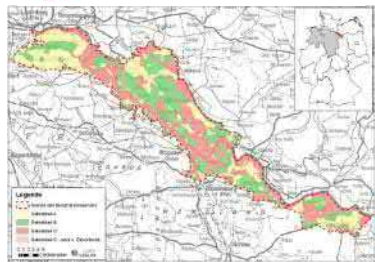
# Biosphere reserves in Germany

Stand: Januar 2021






**Niedersächsisches Ministerium  
für Umwelt und Klimaschutz**



**MaB-Secretariat UNESCO, Paris**



**German MaB-National Committee  
appointed by the Federal Ministry  
of Environment**

**Working Group of  
German Biosphere  
Reserves (AGBR)**



Deutsche UNESCO-Kommission e.V.

Nationale Naturlandschaften



**Bundesländer Working Group for  
„Elbe River Landscape“ UNESCO BR**

**„Niedersächsische Elbtalau“ Biosphere  
Reserve**



## Bundesländer Working Group for „Elbe river landscape“ UNESCO BR

3-4 meetings per year

**Chair rotating every two years**

(an agreement between the Länder and a common set of rules of procedure are in preparation)

**Members:**

- Bundesländer ministries (5)
- Bundesländer biosphere reserve administrations/BR management bodies (5)

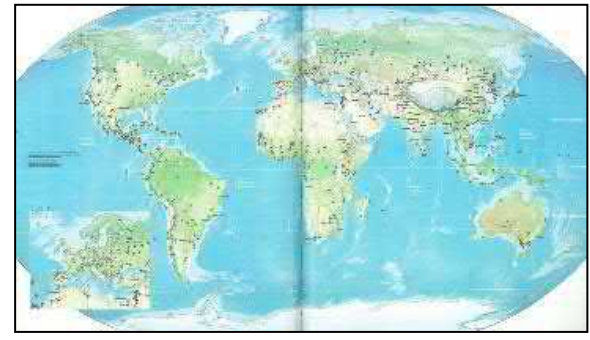
**Tasks (e.g.):**

- Cooperation with the German MAB National Committee and federal agencies
- Preparation of periodic reviews and reports
- Information exchange
- Planning and implementation of joint projects
- Implementation of the partner concept
- Thematic working groups
- Common homepage

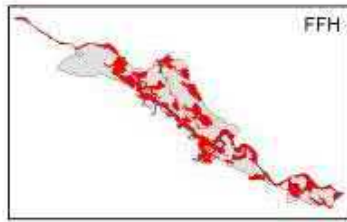


[www.flusslandschaft-elbe.de](http://www.flusslandschaft-elbe.de)



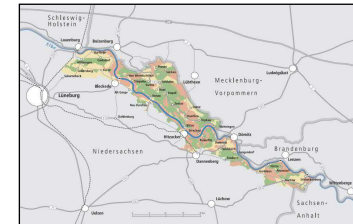


**Natura 2000 - EU Habitats and Bird Directives**



**Biosphere reserve as a large scale  
Nature Conservation Site**

**WNBR - Programme, Guidelines, Action Plans**



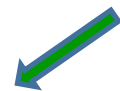
**Biosphere reserve as a model region for SD**

**Public perception of  
Biosphere reserve  
administration**



**Agency for sustainable regional  
development**

***Nature conservation authority***



# Regional Participation Structures in Lower Saxonian Elbe River Biosphere Reserve

**Defined by politicians/the biosphere reserve act:**

## **Biosphere Reserve Advisory Board**

represented by

- Counties and Municipalities
- Chamber of Crafts/Chamber of Industry and Commerce Chamber
- Agriculture Farmers' Association
- Forest Owners' Association
- Hunters Organisation
- Fisheries Association
- Sports Federation
- Tourism organisation
- Nature conservation associations
- Educational and research institutions

**Founded in order to control and to represent one's own interests:**

## **Working group "Elbtalaue-Wendland"**

represented by

- Counties and Municipalities
- Tourism and economic development agencies
- Farmers' Association
- LEADER Regional Management
- adjacent Nature Park
- Biosphere Reserve Administration

## **Agricultural Working Group**

represented by

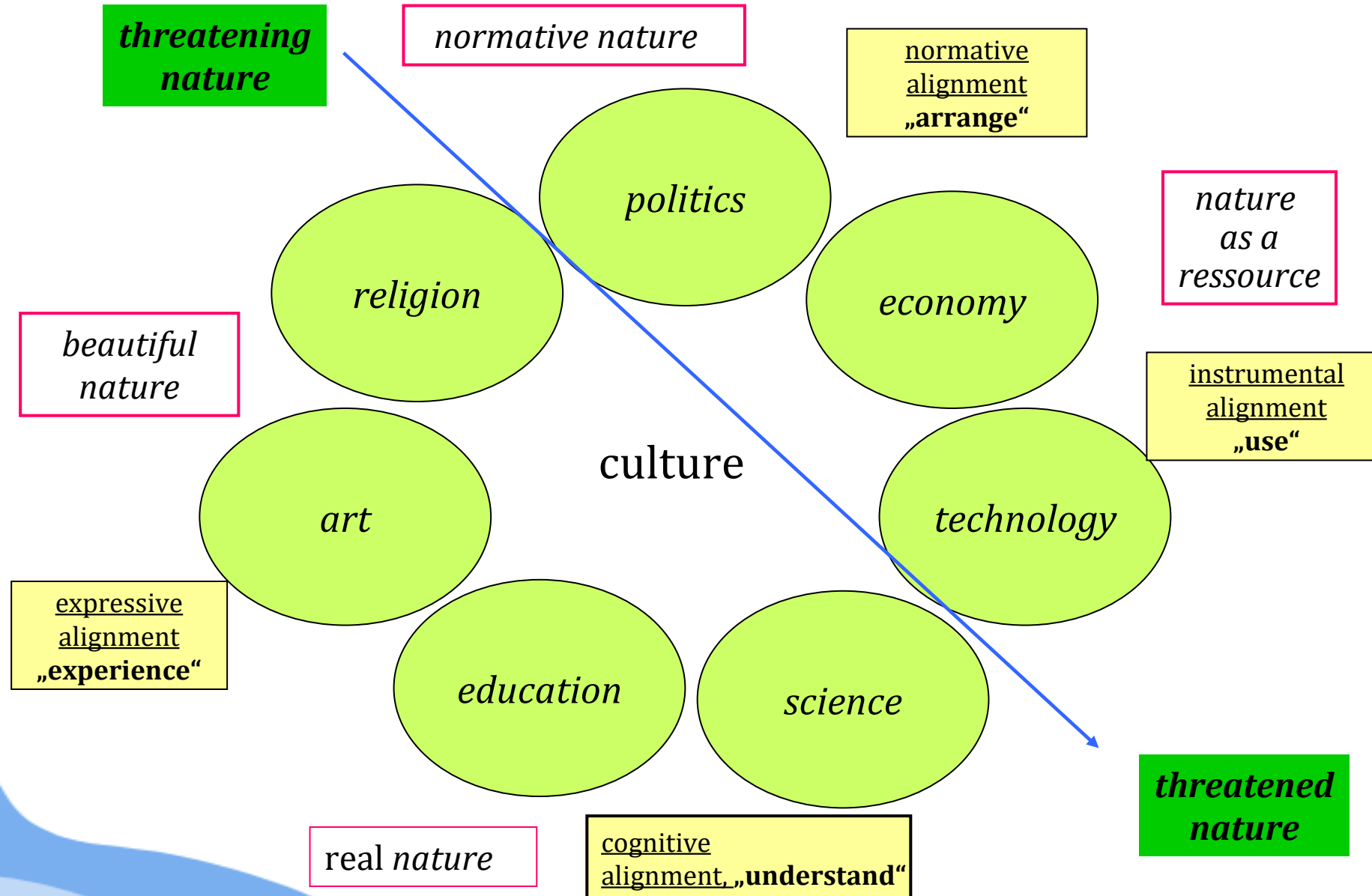
- Active farmers
- Farmers' Association
- State Land Administration
- Chamber of Agriculture
- Biosphere Reserve Administration



**NGO**

**Association for the Protection of the Cultural Landscape and Property in the Elbe Valley e.V.**

Modell von Naturkonzeptionen  
(verändert nach FELDMANN 1990 u. GEBHARD 1994)



**threatened nature**





Die Nationalparks, Biosphärenreservate und Naturparks in Deutschland

Nationale Naturlandschaften

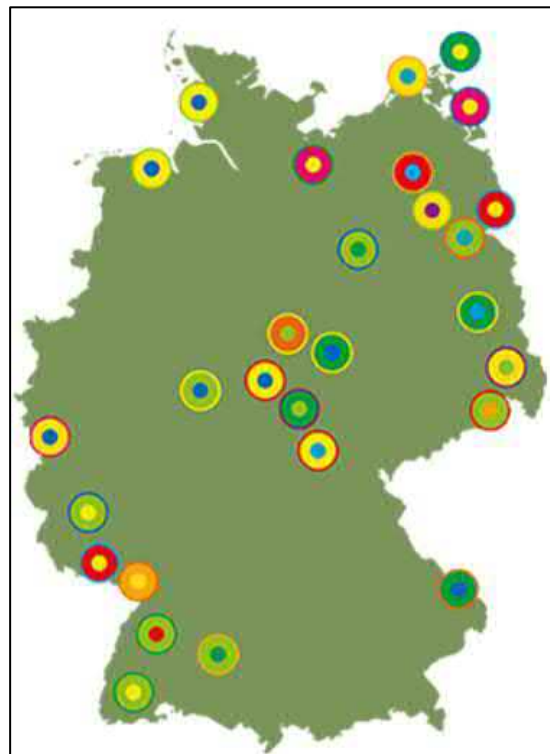


Foto: v. Haaren, 2013

# Biosphere brands and partner networks



**Betriebe & Einkaufsmöglichkeiten:**

1. Hühnerhof Schmalz GmbH, Müritzer Bräuerei	10. Westlich, St. Simeon Buchhandlung
2. Schäfers v. Mackensen GbR, Schmalbergen	11. Abt. Buchlung der Gärtnerei, Müritzer Bräuerei
3. Metzgerei-Genossenschaft Müritzer-Neubauer v. G., Müritzer Bräuerei	12. REWE Dieckhoff, Müritzer Bräuerei
4. Metzgerei-Genossenschaft Hohenstein v. G., Müritzer Bräuerei	13. REWE Dieckhoff, Müritzer Bräuerei
5. Metzgerei-Genossenschaft Hohenstein v. G., Müritzer Bräuerei	14. REWE Dieckhoff, Müritzer Bräuerei
6. Metzgerei-Genossenschaft Hohenstein v. G., Müritzer Bräuerei	15. REWE Dieckhoff, Müritzer Bräuerei
7. Metzgerei-Genossenschaft Hohenstein v. G., Müritzer Bräuerei	16. REWE Dieckhoff, Müritzer Bräuerei
8. Metzgerei-Genossenschaft Hohenstein v. G., Müritzer Bräuerei	17. REWE Dieckhoff, Müritzer Bräuerei
9. Metzgerei-Genossenschaft Hohenstein v. G., Müritzer Bräuerei	18. REWE Dieckhoff, Müritzer Bräuerei









# Fahrtziel Natur

Fahrtziel Natur ist eine Kooperation der Umweltverbände BUND, NABU, VCD und der Deutschen Bahn mit derzeit 28 Nationalparks, Naturparks und Biosphärenreservaten in Deutschland, Österreich und der Schweiz. Seit 2001 engagiert sich das Netzwerk für die Entwicklung des nachhaltigen Tourismus.



**Fahrtziel** *natur*



**Ausgezeichnet**

**Fahrtziel** *natur*

**Award 2020**





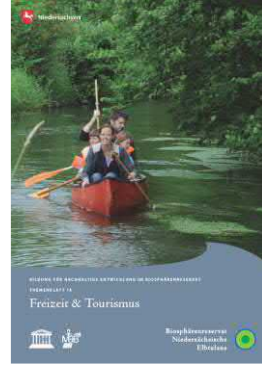
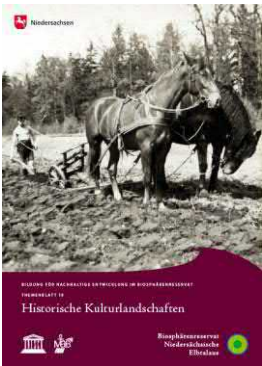
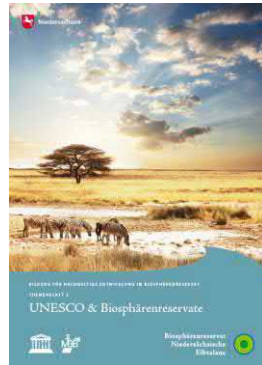
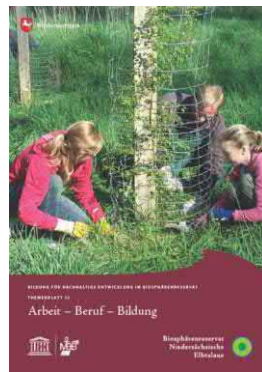
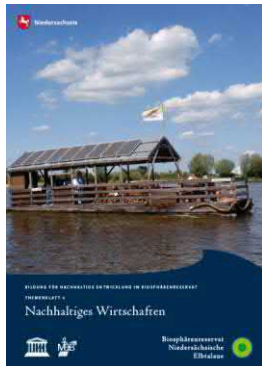
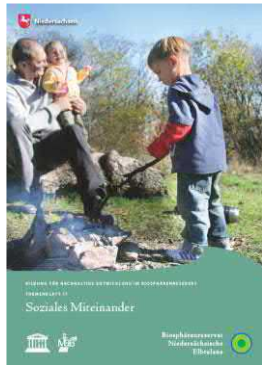
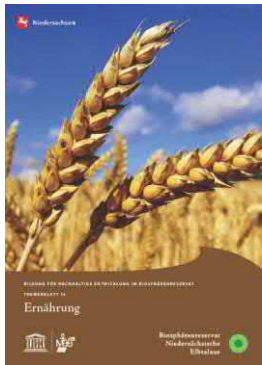
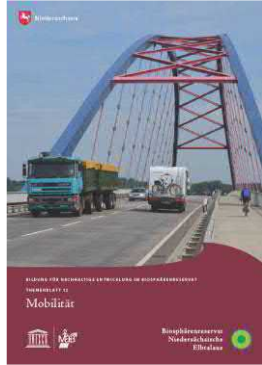
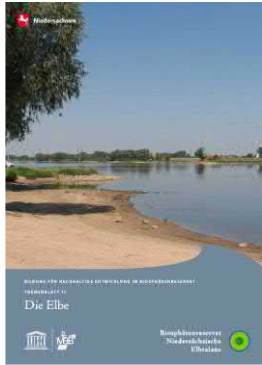
## Informationcenter „Biosphaerium“ and Infopoints

all operated by municipalities with  
subsidies from the ministry

The map shows the Elbe river flowing through several municipalities. Green lines connect specific locations on the map to photographs and logos of information centers and infopoints. The locations and their corresponding images/logos are:

- Infostelle Preten „Storkenkate“**: A photograph of a traditional half-timbered building.
- Infohaus Neuhaus**: A photograph of a modern building with a red roof, next to the logo for **ARCHEZENTRUM AMT NEUHAUS**, which features a stylized house and animals.
- Infozentrum Biosphaerium Elbtalaue Schloss Bleckede**: A photograph of a large, historic stone building, next to a logo featuring a stylized bird and water.
- Infostelle Konau 11**: A photograph of a modern building with a glass facade.
- Infostelle Dannenberg**: A photograph of a modern building with a glass facade.
- Infostelle Gartow**: A photograph of a half-timbered building with an information board in the foreground.

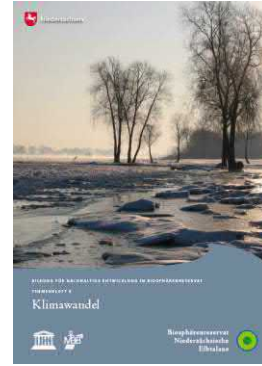
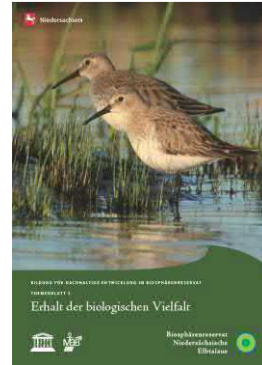
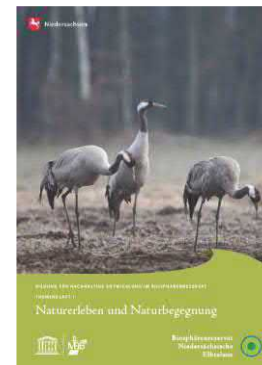
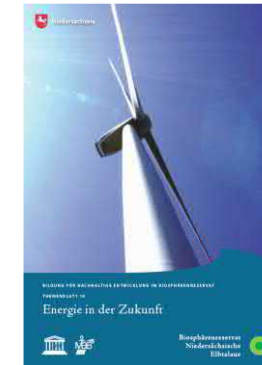
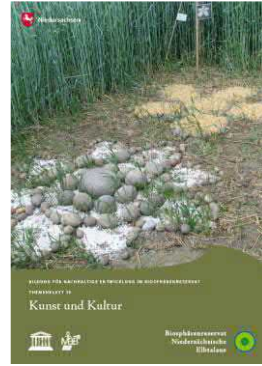
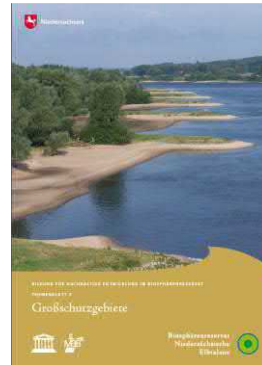
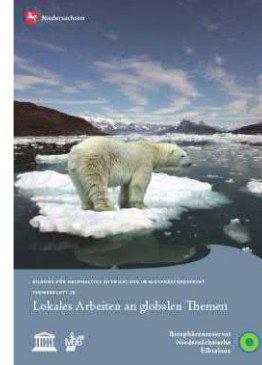
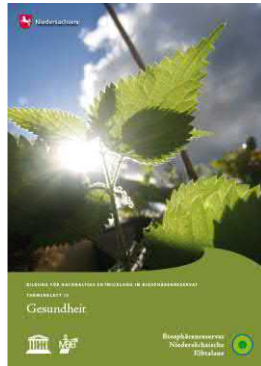
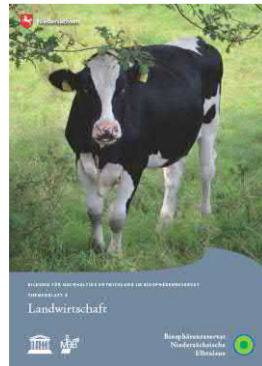
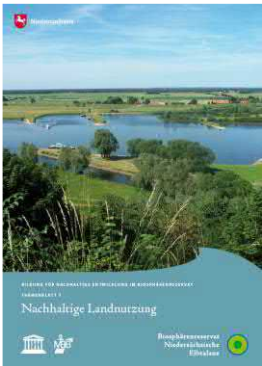




# Emphasize diversity!

## 20 special issues for education for sustainable development in the biosphere reserve

[www.elbtalau.niedersachsen.de](http://www.elbtalau.niedersachsen.de)





# Building bridges to people whose interest is not primarily in nature



Sommerliche Musiktage Hitzacker

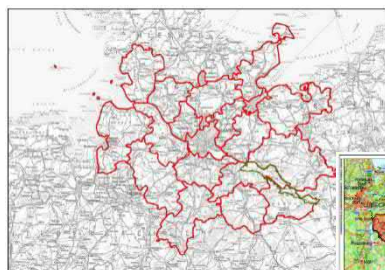
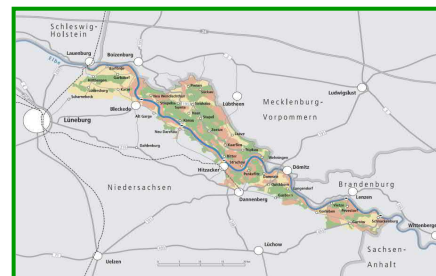




# Management of a TBR means work in many different spatial contexts

Diversity of internal boundaries (administration, cultural traditions, projects...)

## Regional identity ?



**Metropolregion  
Hamburg**



**Biosphärenband Elbe-  
Schaalsee**



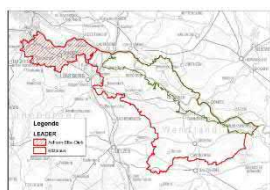
**Biosphärenreservat  
„Niedersächsische Elbtalae“**



**Biosphärenregion  
Elbtalae-Wendland**

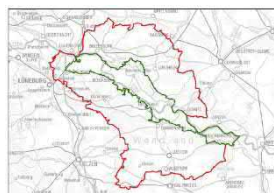


**Tourismusregion  
Flusslandschaft Elbe (GmbH)**



**„IGW-Regionsauftritt“  
Elbe-Wendland**

**UNESCO  
Biosphärenreservat  
Flusslandschaft Elbe**



**Arche-Region  
Flusslandschaft Elbe**



**Naturpark Elbhöhen-Wendland**



**Biosphärenregion  
Flusslandschaft Elbe**



**Tourismusregion  
Wendland.Elbe**

# Example of conflict management







Fotos:NABU LG





## Areas of Responsibility in a partly incongruent legal Situation



### Nature conservation requirements

- Conservation and protection: Natura 2000 special areas of conservation, in particular alluvial forest – code 91E0\*.



### Flood protection requirements

- At bottlenecks: Permanent removal of vegetation that impedes drainage



### Agricultural constraints

- Restriction in the preservation of the cultural landscape due to dioxin contamination => special animals outside the food chain

Practitioners



Authorities



Politics

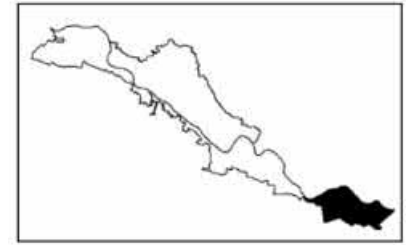
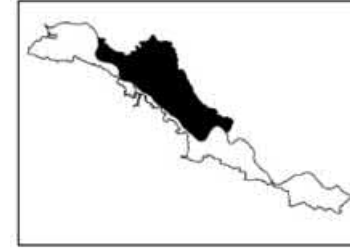
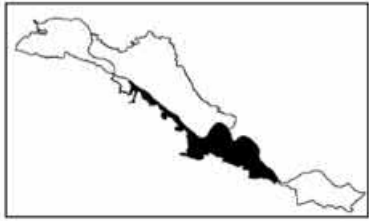
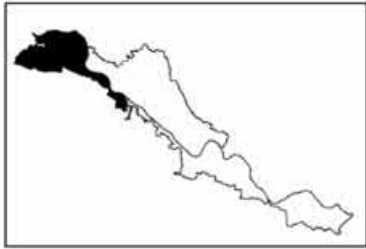
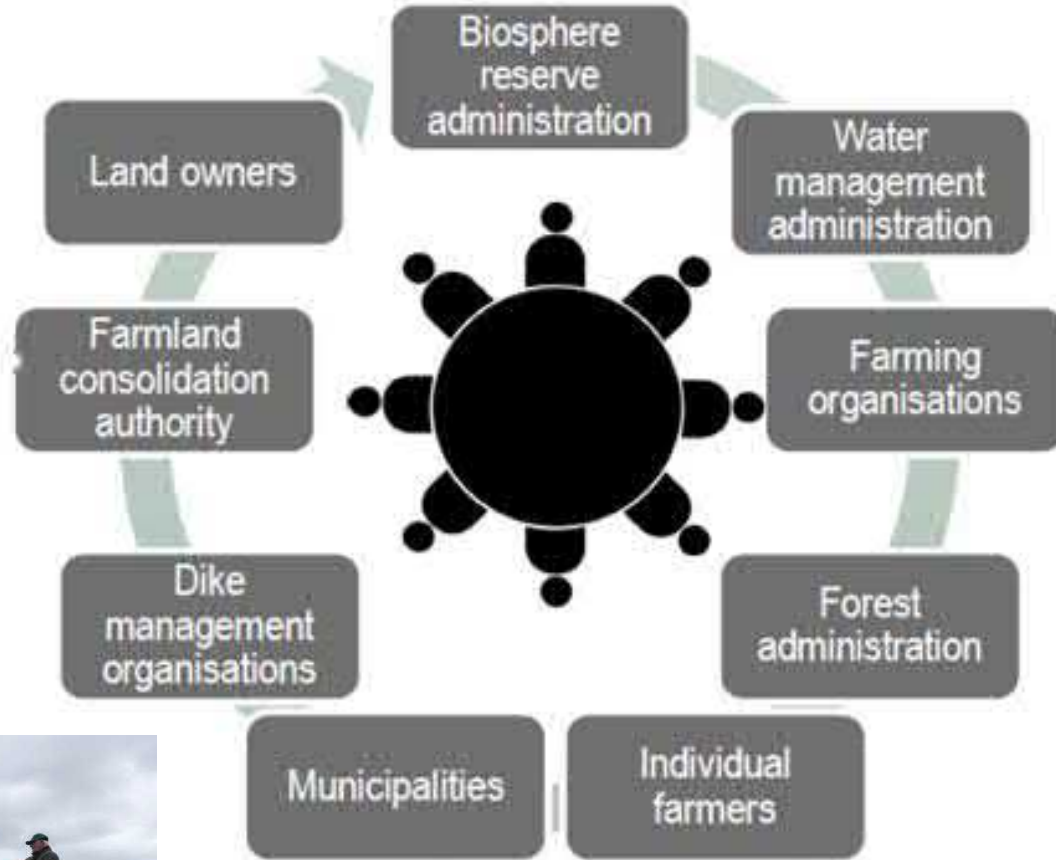


## Cooperative Floodplain Management: Flood risk Management, Risk mitigation in farming, Nature conservation



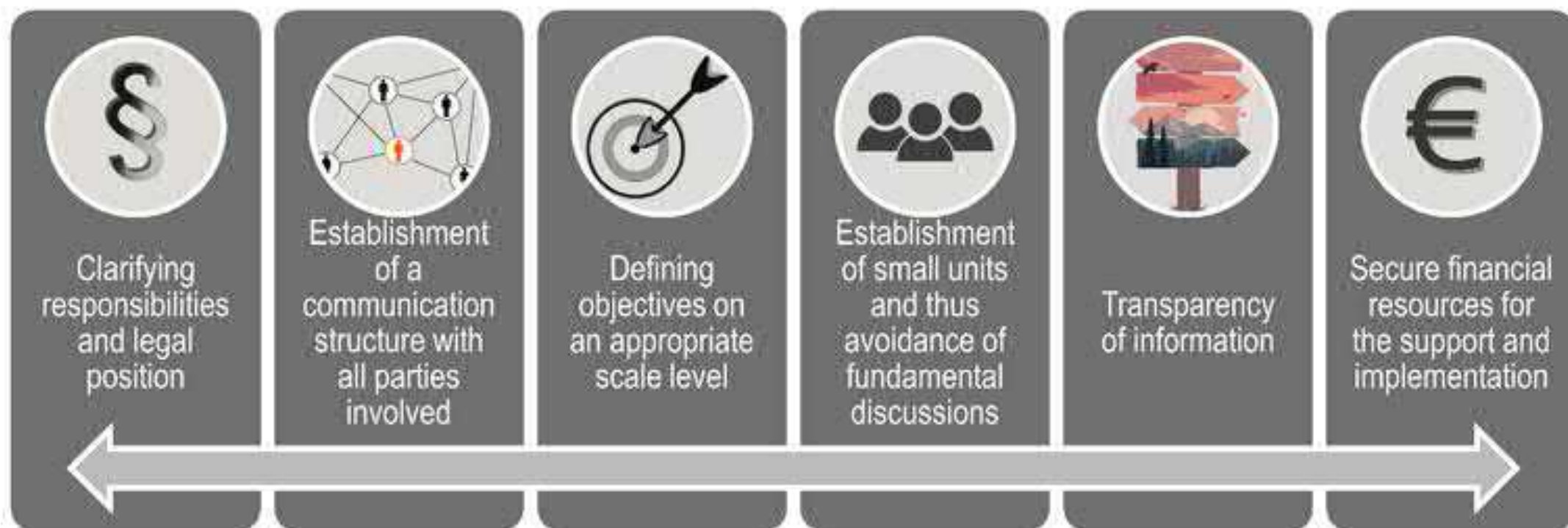


# Bringing together relevant partners in regionalised cooperation structures:





## Lessons learned in participation processes of cooperative floodplain management:



## Learning from each other

Use international contacts in the WNBR to inspire locally fixed stakeholders, broaden their horizons and show new ways to solve problems

Safety for four million people in the Dutch delta

# Dutch Water Program Room for the River


**Facts and figures**  
 The water in the rivers reached extremely high levels in 1993 and 1995. 250,000 people had to be evacuated in 1995.

**Budget**  
 € 2.3 billion

**Planning**  
 Start: 2007  
 Completion: 2015

**Current maximum discharge capacity**  
 15,000 m<sup>3</sup>/sec

**Discharge capacity on completion**  
 16,000 m<sup>3</sup>/sec



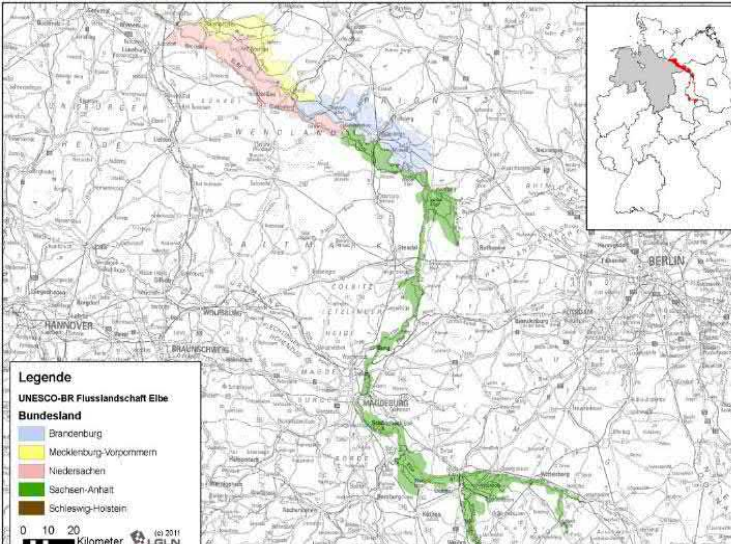
Work in progress lowering groynes



### Gebiete des Staatsbosbeheer in den Niederlanden



Staatsbosbeheer

**Legende**  
 UNESCO-BR Flusslandschaft Elbe  
 Bundesland

- Brandenburg
- Mecklenburg-Vorpommern
- Niedersachsen
- Sachsen-Anhalt
- Schleswig-Holstein

0 10 20  
 Kilometer © 2011  
 LGLN



Thank you!



## How to raise Stakeholder Engagement in a biosphere reserve – **experiences, conclusions, recommendations (I)**

- Stakeholder and inhabitants of the BR, who have already embraced the idea of sustainable development should be strengthened in their leading role and supported by the BR-management, e.g. by:
  - partner networks and corresponding funding programmes
  - training of interested nature and culture guides
  - support for organic farms and husbandry of endangered livestock breeds.
  
- For the cooperation with stakeholders in a BR, it is important to translate the often very theoretical and academic sounding strategies, concepts and action plans of the MAB program „into practice“ and to address the target groups directly (!).
  
- Translation work between science and practice (in both directions) is an essential task as well.
  
- Connections should be created/bridges built to stakeholders/citizens whose primary interests are not nature but e.g. in the areas of cultural history, aesthetics, religion, music, recreation, ...



## How to raise Stakeholder Engagement in a biosphere reserve – **experiences, conclusions, recommendations (II)**

- In addition to official/administrative participation structures and cooperation with supporting NGOs, active approaches should also be made to groups or associations that have formed in opposition to the biosphere reserve (which is often better than no interest at all).
- Do not only address nature and the services of biosphere management in public relations, but also present the achievements of all those (stakeholders) who support the biosphere reserve.
- For cooperation with municipalities and their politicians, it should be borne in mind that possible economic benefits are often expected from the location in a biosphere reserve. Corresponding projects should be initiated and supported.
- For a more active participation of municipalities in the work for the biosphere reserve, it has proved to be successful to delegate the task of information and educational centers for the BR as far as possible and to support them accordingly financially.

## How to raise Stakeholder Engagement in a biosphere reserve – **experiences, conclusions, recommendations (III)**

- Especially in the case of large-scale biosphere reserves, which are interpreted holistically within the framework of the MAB programme, different types of boundaries must be observed in cooperation with stakeholders, e.g. in terms of spatial and content responsibilities as well as personal experience and knowledge.
- Accordingly, it is important, especially in the case of conflict management, to choose an appropriate spatial scale level.
- In project funding, socio-economic approaches and the participation of regional stakeholders in project-accompanying working groups are becoming increasingly important. Thus it should be paid great attention to a content, spatial and temporal connectivity of the projects, because the often given short-term nature of projects can gradually lead to "project fatigue".
- International partnerships within the framework of the MAB programme can and should be used to arouse interest and possibly a certain pride among regionally bound stakeholders.



