



Interreg



EUROPEAN UNION

Danube Transnational Programme

SaveGREEN

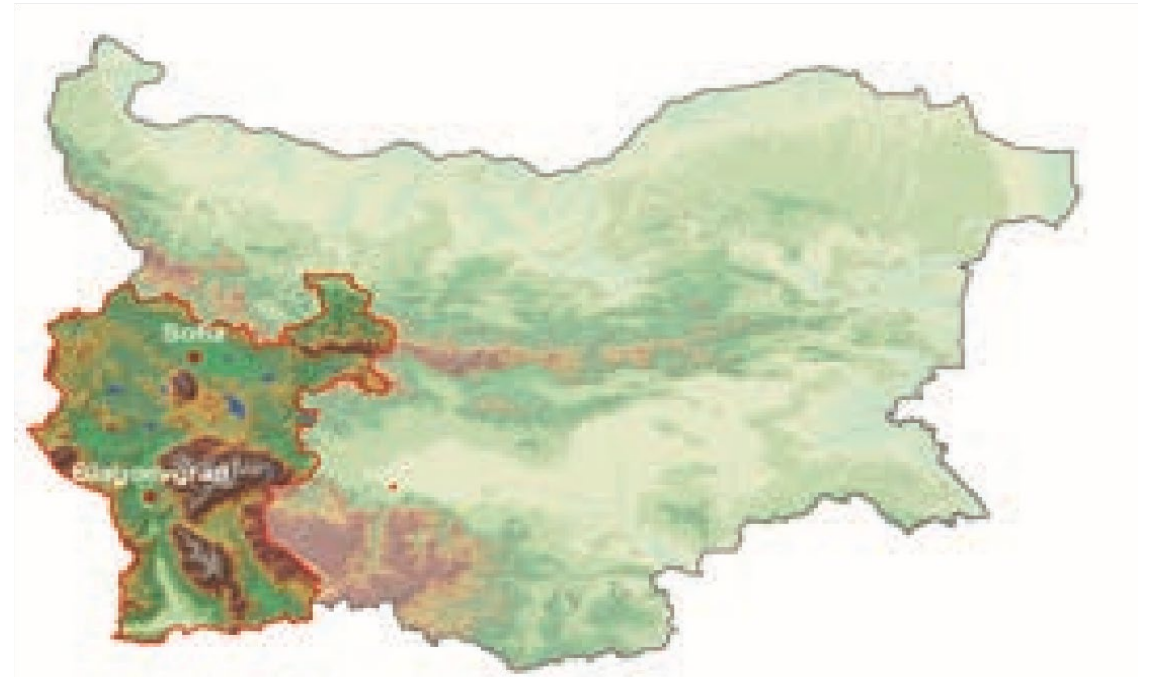
Forest Management in Rila-Verila-Kraishte Pilot Area

Transnational Experience Exchange Workshop
Dupnitsa, Bulgaria, 11-12 May 2022

Vanya Kamenova, SWSE



SOUTHWESTERN STATE ENTERPRISE – IN HARMONY WITH NATURE



SWSE structure and main tasks

- The structure of SwSe comprises a central administration and 38 territorial units, being 6 state hunting enterprises (She), and 32 state forestry enterprises (SFe). all of them are part of the forest service in Bulgaria, which has over 140-year-old history and traditions in the care for the Bulgarian Forest. The main tasks of the enterprise are aimed at sustainable management, maintenance of the ecosystem diversity, conservation of the biodiversity and the forest resources in the state-owned forests, and comprise of:
- Implementation of the forestry and hunting management plans, as well as maintenance and/or restoration activities in the state-owned forests;
- Activities for protection and conservation of the forest territories and anti-erosion measures in the state-owned forests;
- Design and construction activities in the forests and the lands falling in the state-owned forest territories;
- Planting of new forests in farm land;
- Provision and rendering of public services;
- Other activities, not prohibited by law, as well as activities assigned by the Minister of agriculture, Food and Forestry, or contract-based.

SWSE staff

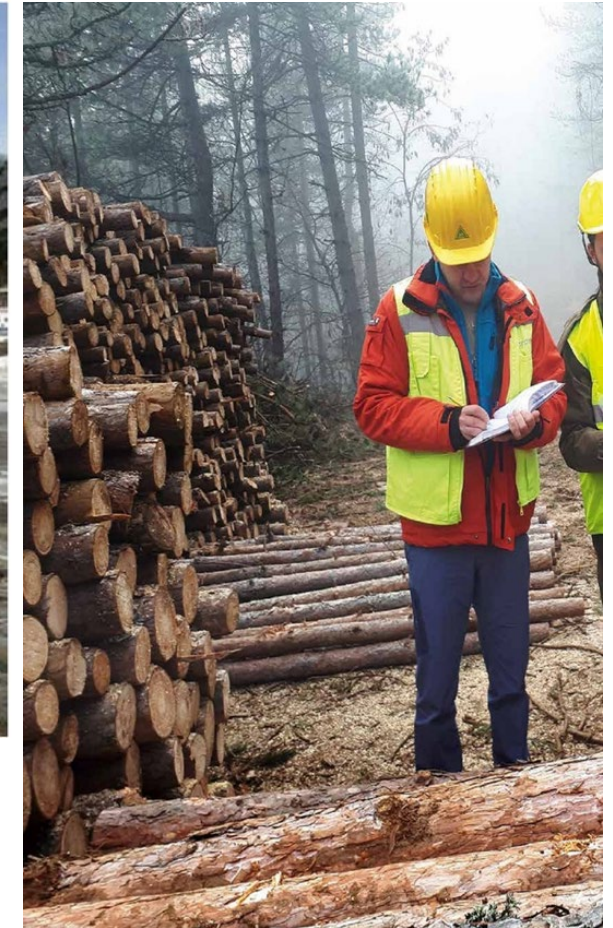


SWSE Commercial Activities

This is a commercial company with 100% state participation and manages the state forests of one sixth of Bulgaria's territory. The company is the second largest in this sector in the country and has about 1600 employees and workers. The total area of the forest territories included in the scope of the Southwestern State Enterprise is 952,973 ha, 676,913 ha of which are state forests structure and main tasks



In 2020 the company realized annual revenues and the main expenses are investments in afforestation, repair of forest roads, protection against diseases and pests, fire protection, protection of territories and remuneration of staff. The annual volume of wood sold is approx. 1 million cubic meters. With the earnings generated through wood trading the Enterprise established a fund called "Investments in forests"..



SWSE Investment Programme



Бараж N° 8 на Рибнишка река в ДГС „Петрич“ – преди и след ремонта
Barrage No. 8 on the Ribnitsa River in Petrich SFE, prior and post its overhaul



Нов горски път с мост на р. Драговищица
New forest road with a bridge on Dragovishtitsa River

Ремонт на бараж на Марулевска река, ДГС „Благоевград“
Overhaul of the barrage on the Marulevska River, Blagoevgrad SFE



Ловен дом „Перивол“, ДГС „Разлог“
Perivol Hunting House, Razlog SFE



Ремонт на почивната станция на ДГС „Благоевград“ в м. Добро поле
Renovation of the holiday facility of Blagoevgrad SFE in the locality of Dobro pole



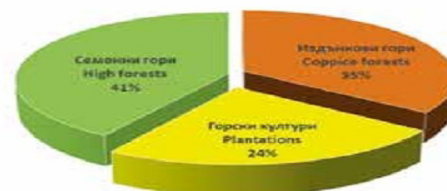
Обновената сграда на разсадник „Долно Уйно“, ДГС „Кюстендил“
The renovated building of Dolno uyno Forest Nursery, Kyustendil SFE



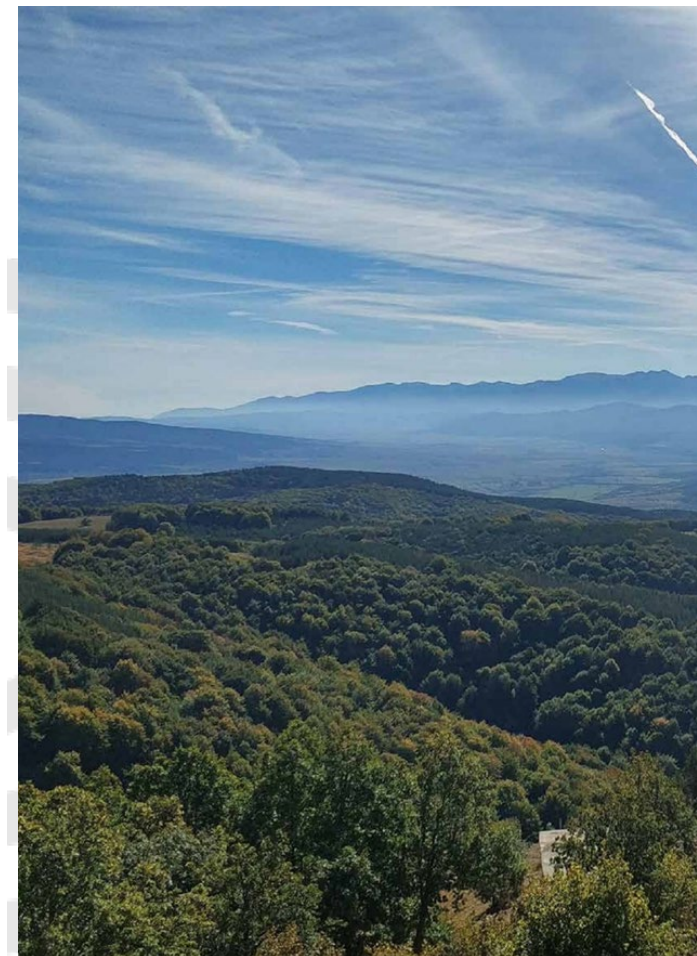


VARIETY OF FOREST RESOURCES

The forest territories within the scope of the Southwestern State Enterprise are distinguished by an extremely diverse relief. The Vitosha, Rila, Pirin, and Slavyanka mountains fall here, along with parts of the Stara Planina, Sredna Gora and Southwestern Rhodope mountains, the Osogovo-Belasitsa mountain range, the western part of the Kraische-Srednogorie district, and the valleys of the Mesta and Struma rivers, part of the Iskar river valley and their respective tributaries. The climate and soils are characterised by continental and Mediterranean features.



- General characteristics of forests:
- Average forest cover – 55 percent;
 - Average age of forests – 63 years;
 - Total stock of wood – about 109,814,800 cubic metres;
 - Average annual growth – 1,901,870 cubic metres standing mass;
 - Average annual cut – 1,065,170 cubic metres of logged mass;
 - Cut of forest growth – 69 percent;
 - Species composition of forests – Scots pine, Austrian pine, Norway spruce, fir, Macedonian pine, Bosnian pine, beech, oak, hornbeam, maple, chestnut, etc.



SWSE Public Activities

The company carries out not only commercial but also public activities. It is currently a beneficiary of four projects under the LIFE Nature2016 and LIFE Nature2019 Programs, as well as two projects under the EU Operational Programs. The largest share in the social activities provided is the supply of the local population with firewood at preferential prices, followed by the provision of free environmental education to adolescents - forest pedagogy.



SWSE - The forest goes to the children!



SWSE Protect forest from fires!



Високопроходим протипожарен горску автомобил
Forest-fire SUV extinguisher



Проверка в горвогодишен обект
Inspection at a logging site



SWSE Future Activities

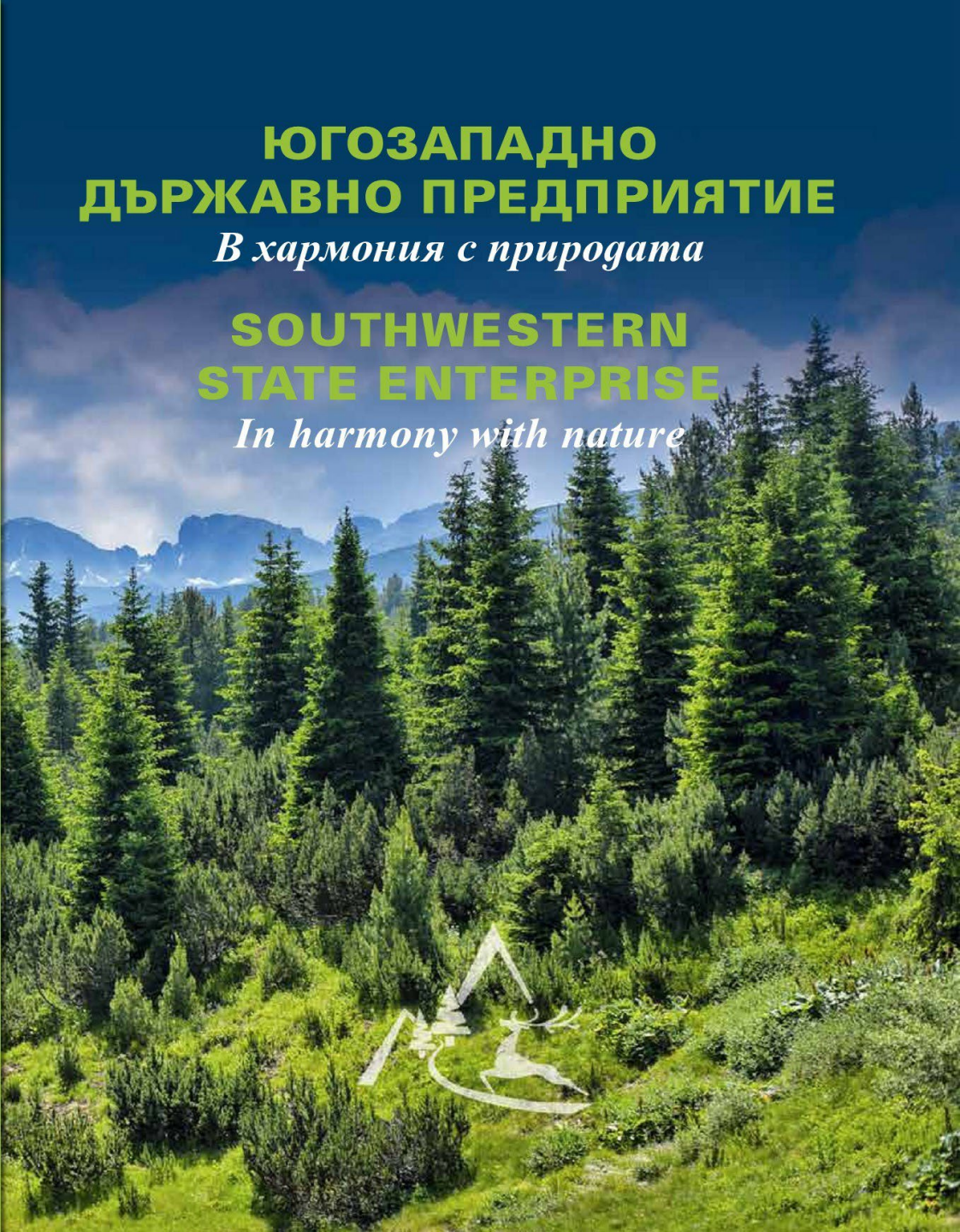
- One of the company's challenges in the upcoming years is to provide general guidelines for the promotion of green jobs in forestry. This should serve as a plan to guide the integration of the forest sector into the green economy which is essential for effectively complying with the "Green Deal" of the European Commission.
- The company has the capacity to execute public-private investment partnerships. Considering the EU's biodiversity policy, actions related to ecosystem benefits and services that have huge revenue-generating potential remain to be implemented.
- The company is a key investor and employer in Southwestern Bulgaria, the forest industry is a major occupation for many families in small towns. Policies are set to ensure safe working conditions, multidisciplinary forest education and gender diversity, as well as a lifelong learning system. South-
- West State-owned enterprises have an interest to continue using EU funding and support mechanisms for effective afforestation, forest protection and restoration, increasing the capacity of forests to absorb and store carbon, positively impacting the bioeconomy and reducing the extent and the damaging consequences of fires, while preserving biodiversity.
- In addition to self financing and funding from European programs, the Company has the capacity and interest to carry out public-private partnerships for investments in the fields of green economy, environmental education, digitization, tourism services, production and processing of non-timber forest products / herbs, forest fruits, mushrooms /, organic stock-breeding, hunting, etc.

**ЮГОЗАПАДНО
ДЪРЖАВНО ПРЕДПРИЯТИЕ**

В хармония с природата

**SOUTHWESTERN
STATE ENTERPRISE**

In harmony with nature



You are welcome!



Southwestern State Forest Enterprise is a national leader in applying innovations in its activities and applying new and sustainable practices

**Visit our website:
<https://www.uzdp.bg/>**