

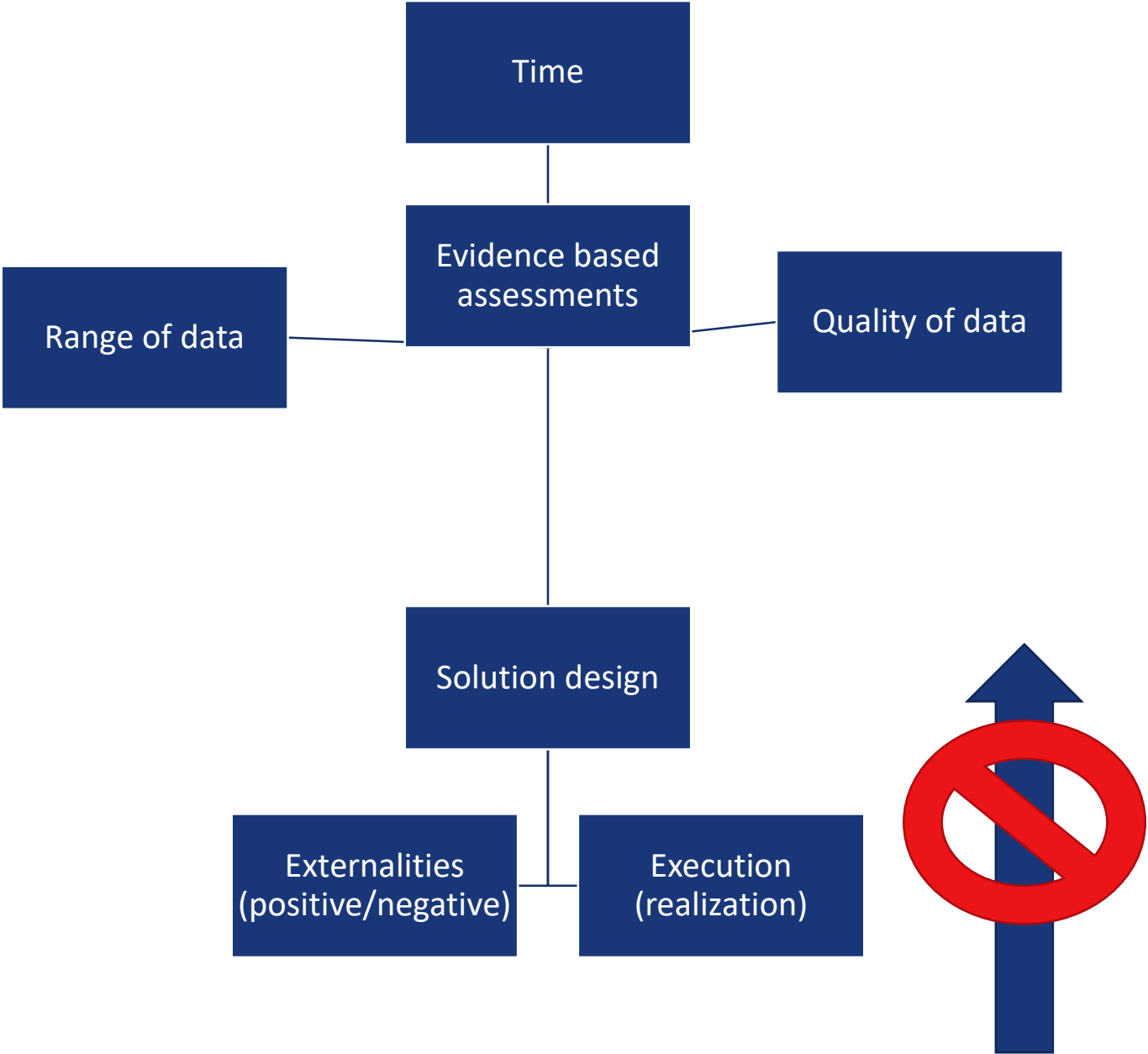
CONNECTIVITY & DEVELOPMENT OF LINEAR INFRASTRUCTURE IN SLOVAKIA VIEW ON PROCESS BOTTLENECKS

Michal Králik

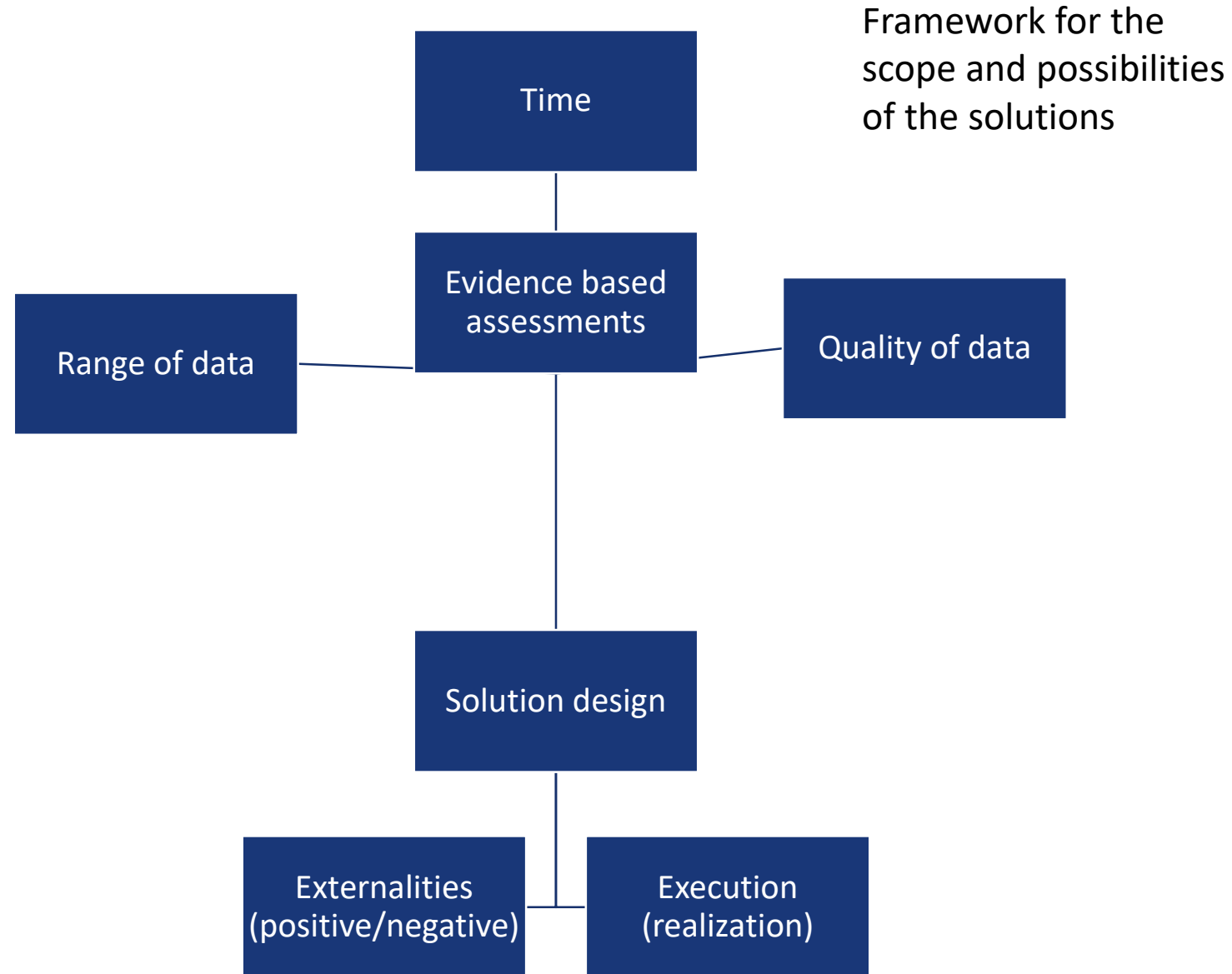
Ecologist (Consulting, design & engineering), Ranger, Authorized person, Tracker



KEY POINTS IN PROCESSES



KEY POINTS IN PROCESSES

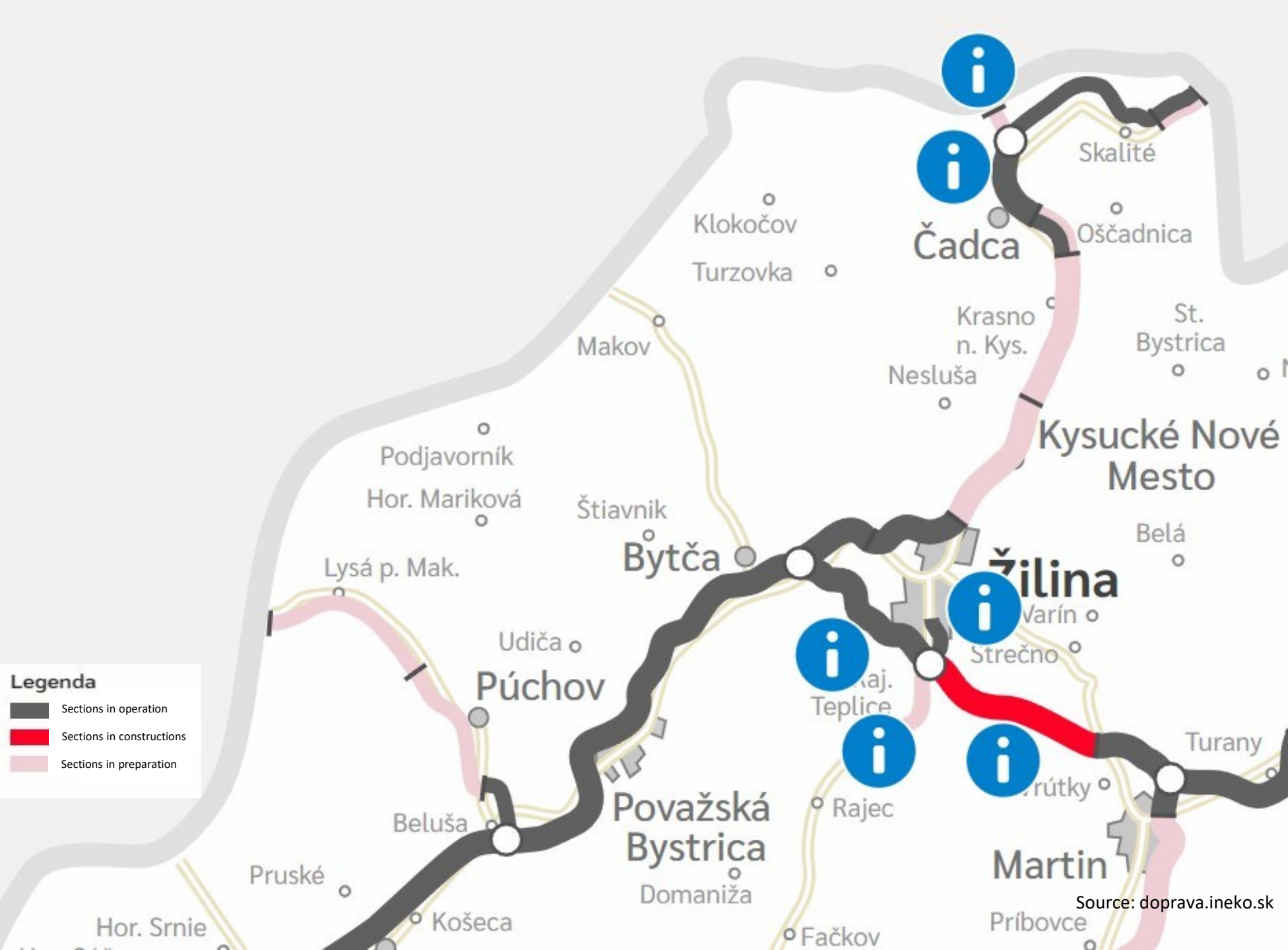


Time

Before – (assessments, studies, monitoring)

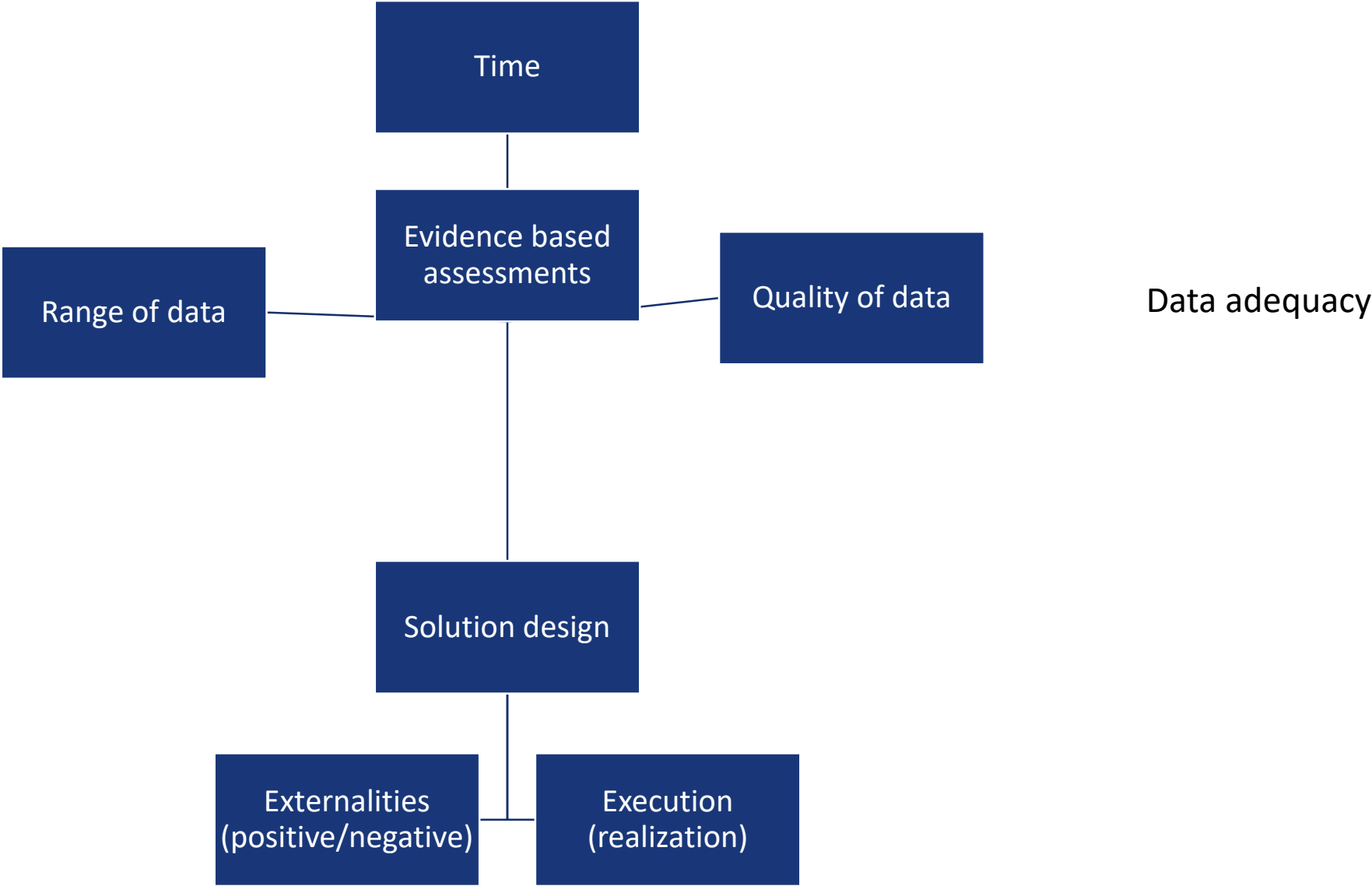
During – (terms and conditions, monitoring)

After – (current conditions, spatial planning, mortality, monitoring)



Source: doprava.ineko.sk

KEY POINTS IN PROCESSES

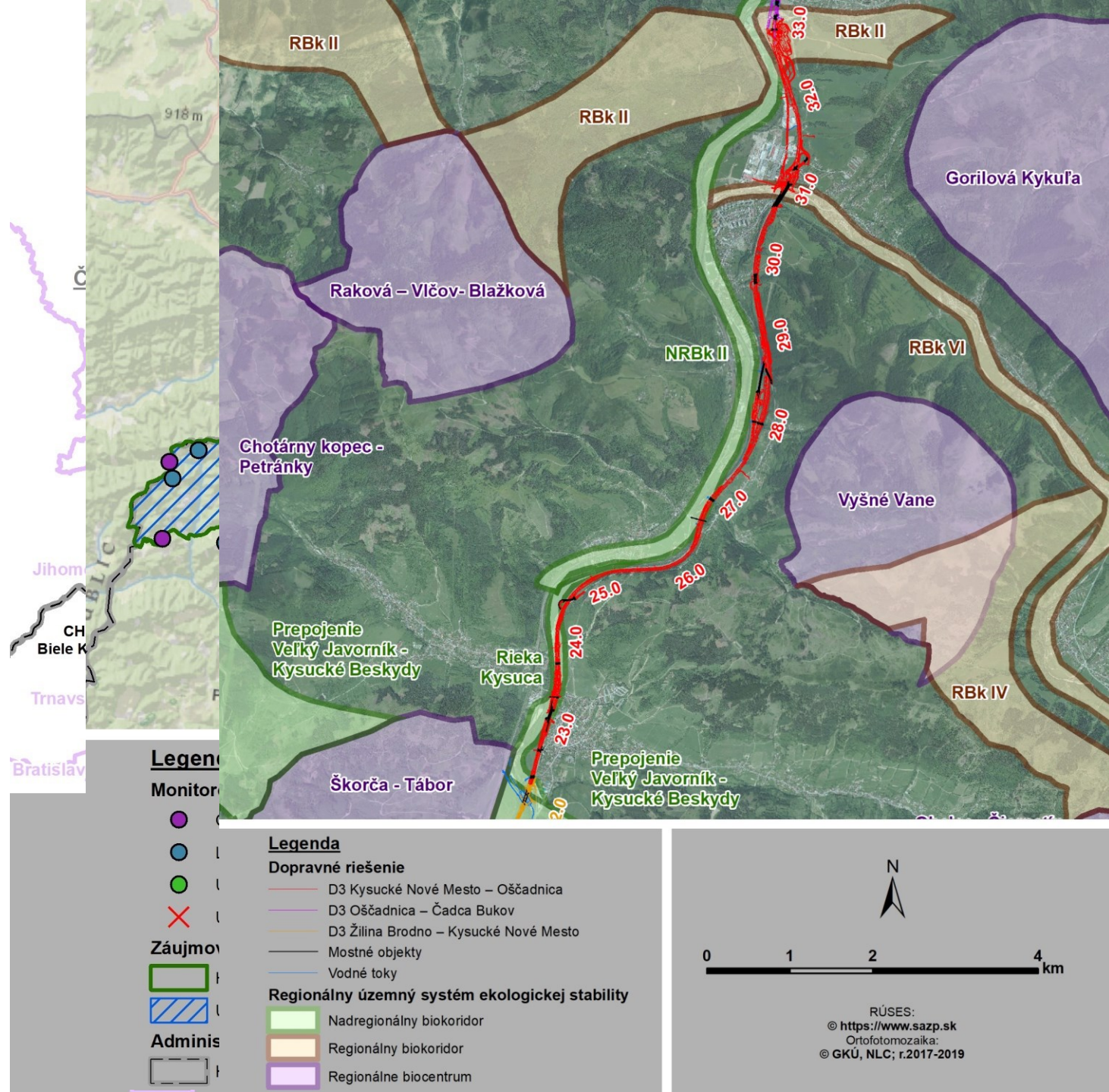


Evidence based assessments

- Standards (methodology)
- Technical specifications

Migration studies

- Available data (maps)
- Surveys and data collection
- Solution proposal



Evidence based assessments

- **Standards (methodology)**
- **Authorized persons**
- **Legislative procedure**

Appropriate assessment N2k

- Available studies
- Evaluation of data adequacy (precautionary principle)
- Mitigation measures



Article 6(3) - screening

Is the plan or project necessary for the management of the Natura 2000 site?

Yes

No

Article 6(3) - appropriate assessment

Is the plan or project likely to have significant effect on the Natura 2000 site?

No

Yes

Is it ascertained that [having applied the necessary mitigation measures and consulted the public] the plan or project will not have significant effect [with other plans or projects] on the integrity of the Natura 2000 site in view of its conservation objectives?

Yes

No

Article 6(4) derogation procedure

Are there alternative solutions to achieve the goals of the plan or project?

Yes

No

No

Are there imperative reasons of overriding public interest, including socio-economic ones?

Yes

Does the site concerned host priority habitats or species?

No

Yes

Are there human health or safety considerations or beneficial consequences of primary importance for the environment?

Yes

Outcome

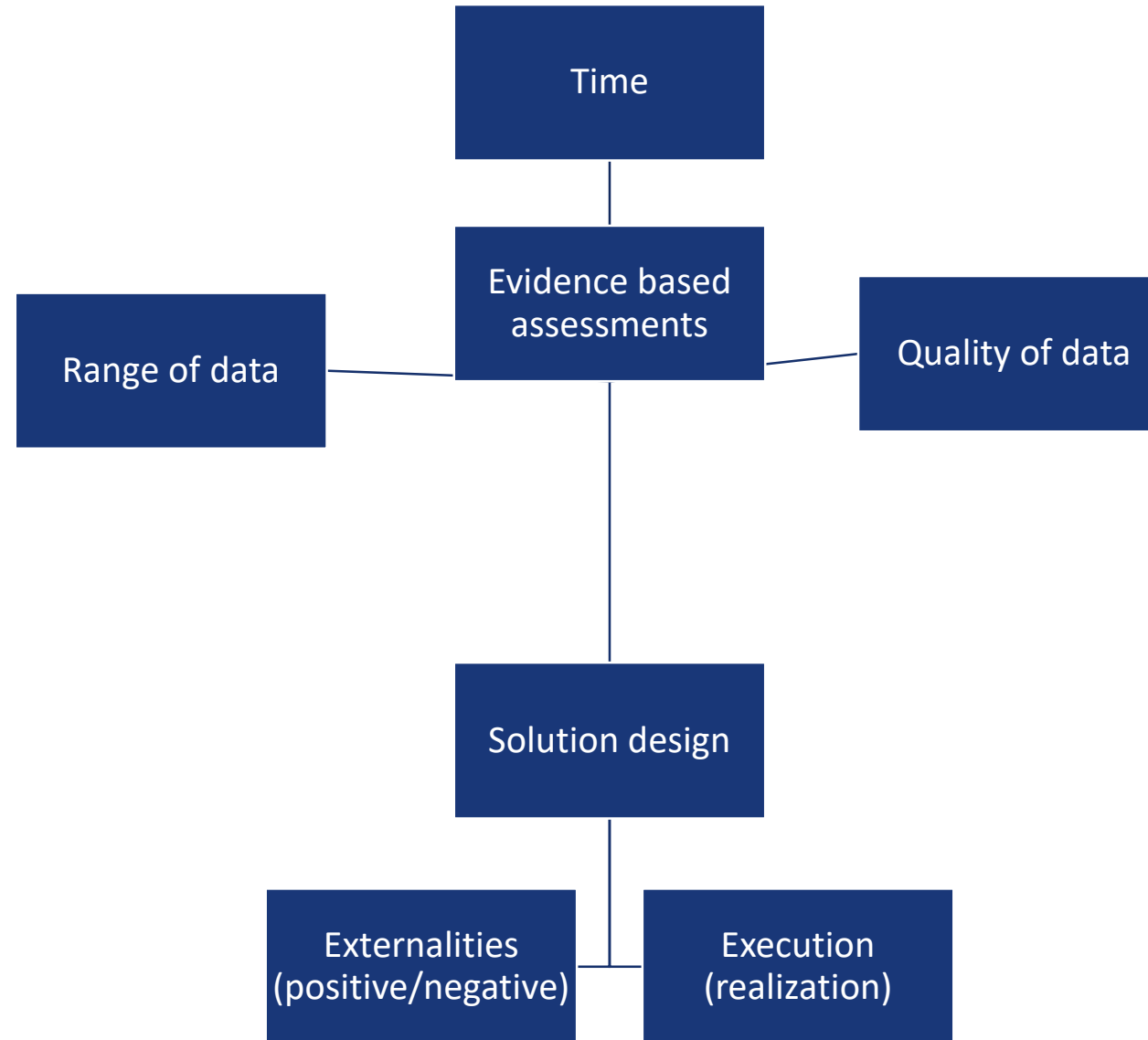
Authorisation cannot be granted

Authorisation can be granted provided the compensation measures are implemented and the Commission opinion is obtained

Authorisation can be granted provided the compensation measures are implemented and the Commission is informed

Authorisation can be granted

KEY POINTS IN PROCESSES



Functional solution
optimized for a specific
case

Solution design

POZDĚLNÝ REZ V OSI L'M M 1:250

SKLONNÉ POMERY

1,90%

R=6000,00
T=134,093
Y=1,124

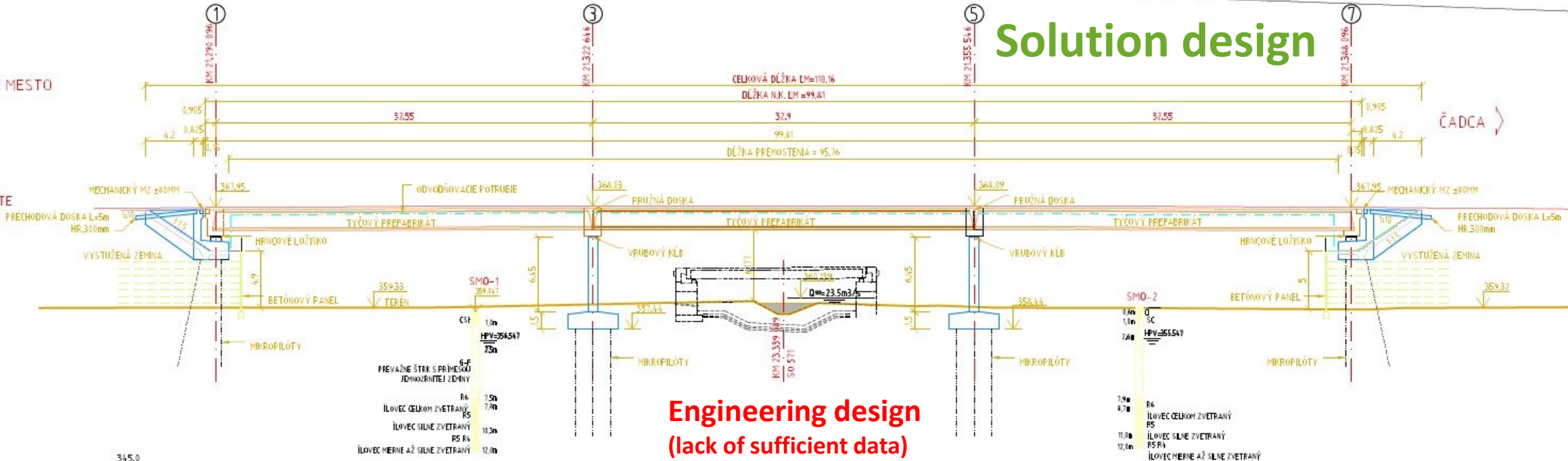
-1,45%

Solution design

KYSUCKÉ NOVÉ MESTO

ČADCA

VÝŠKY NA NIVELETE



Engineering design
(lack of sufficient data)

ZROVNÁVACIA ROVINA

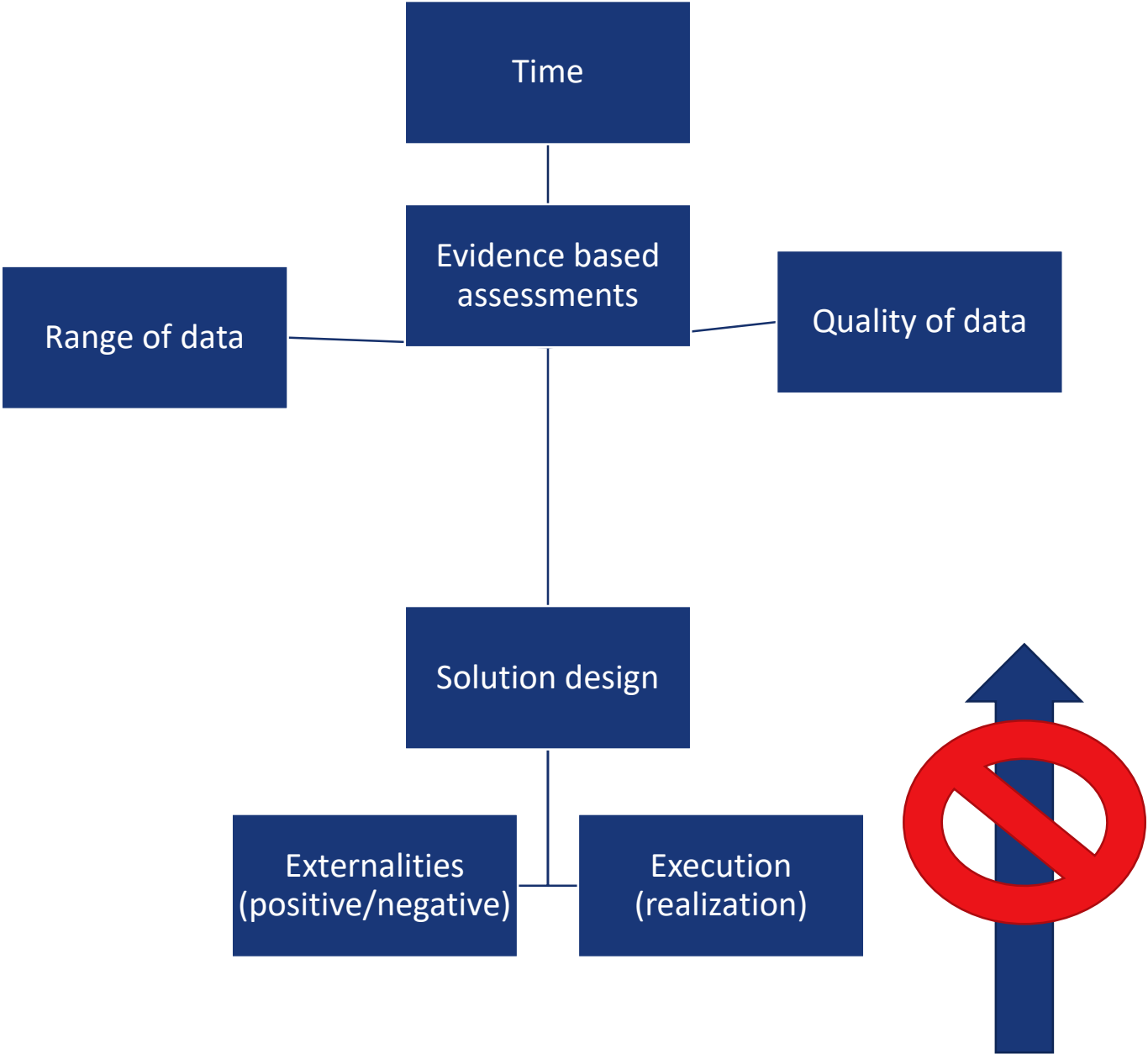
21.3

P=432.06

21.4

SMEROVÉ POMERY

KEY POINTS IN PROCESSES



THANK YOU

