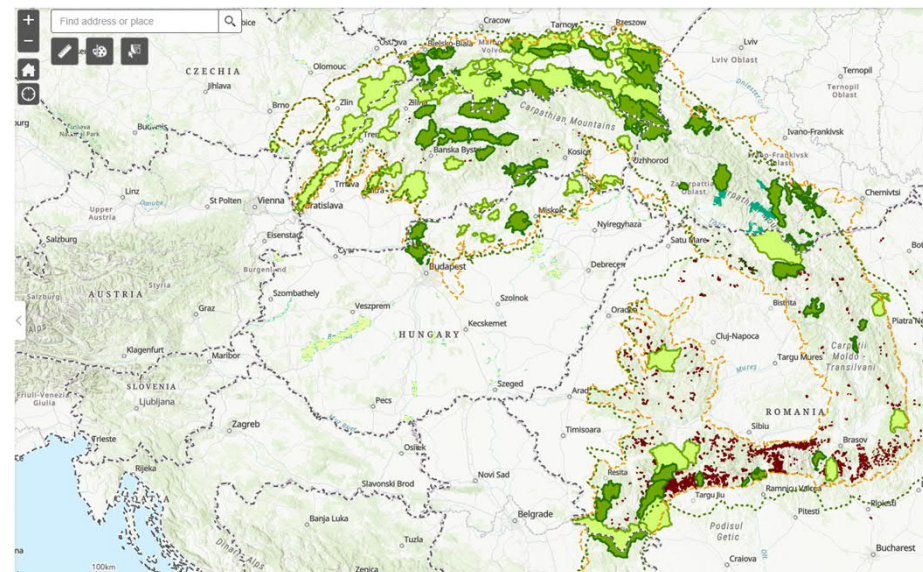


ConnectGREEN project  
“Restoring and managing ecological corridors in mountains as the green infrastructure in the Danube basin”

Carpathian Countries Integrated Biodiversity Information System (CCIBIS), Innovative Decision Support Tool and E-learning platform

Spectra CE, Vladimír Ondrejčka, Milan Husár, prof. Maroš Finka

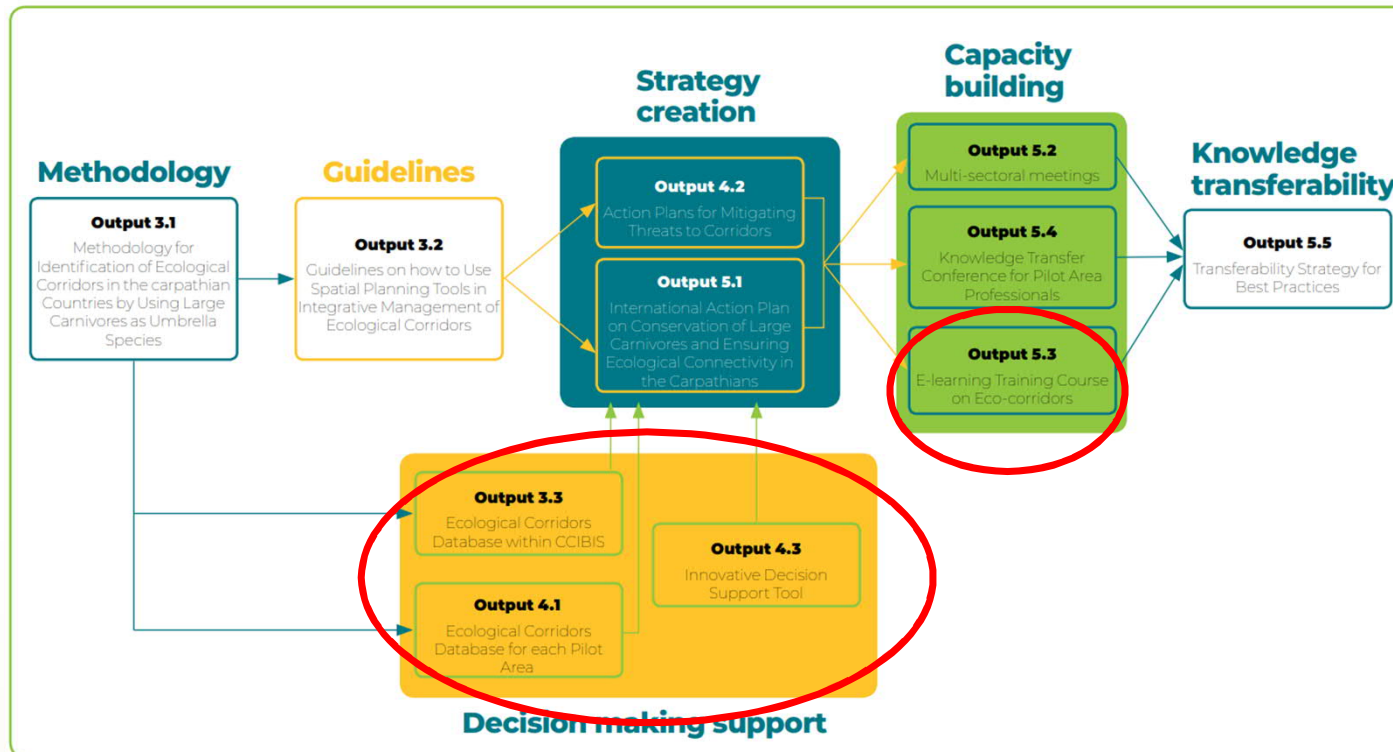
Visegrad, 29th September 2021



Protected Areas – Cornerstones of Ecological Connectivity in the Carpathians and Beyond

International Conference, Visegrád, Hungary, 28-30 September 2021 - Project co-funded by European Union Funds (ERDF, IPA)

## Relation of the components to the other ConnectGREEN Project Outputs



# The Carpathian Countries Integrated Biodiversity Information System CCIBIS

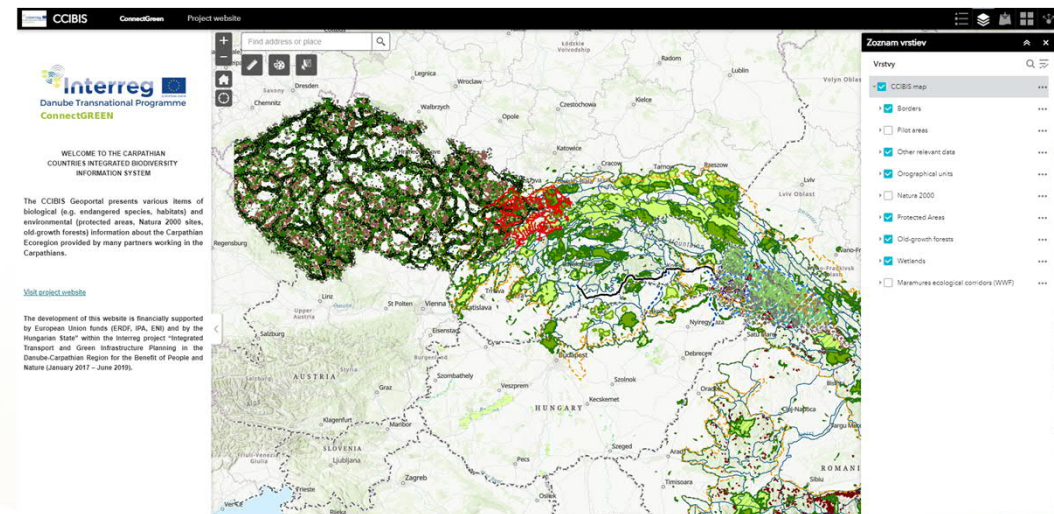
- A platform integrating information and data from initiatives implemented in the Carpathian Region.

TransGREEN, ConnectGREEN, SaveGREEN

BioRegio and other.

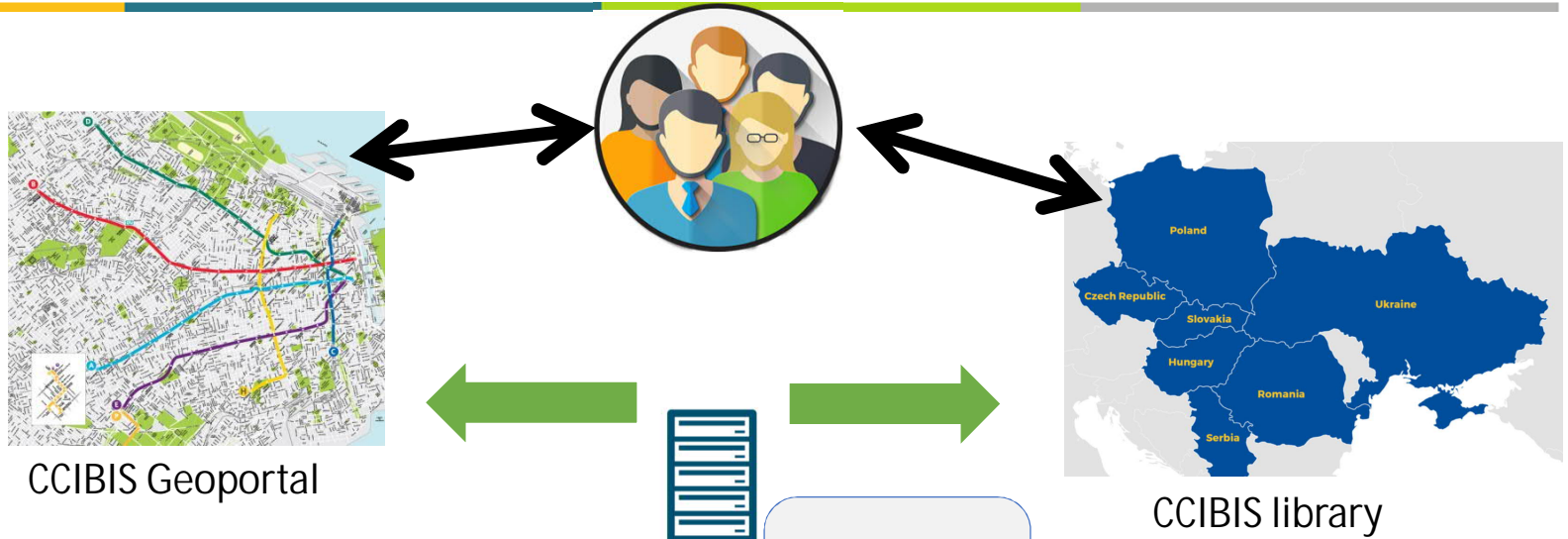
- Under the auspices of the Carpathian Convention – international institution under UNEP
- An open platform allowing for unlimited data management, option to download the data, including additional functionalities for creating new data layers.

<https://gis.vm.stuba.sk/portal/apps/webappviewer/index.html?id=a074b7cd120d42df863f89e9e9414d49>



Platform users

Platform

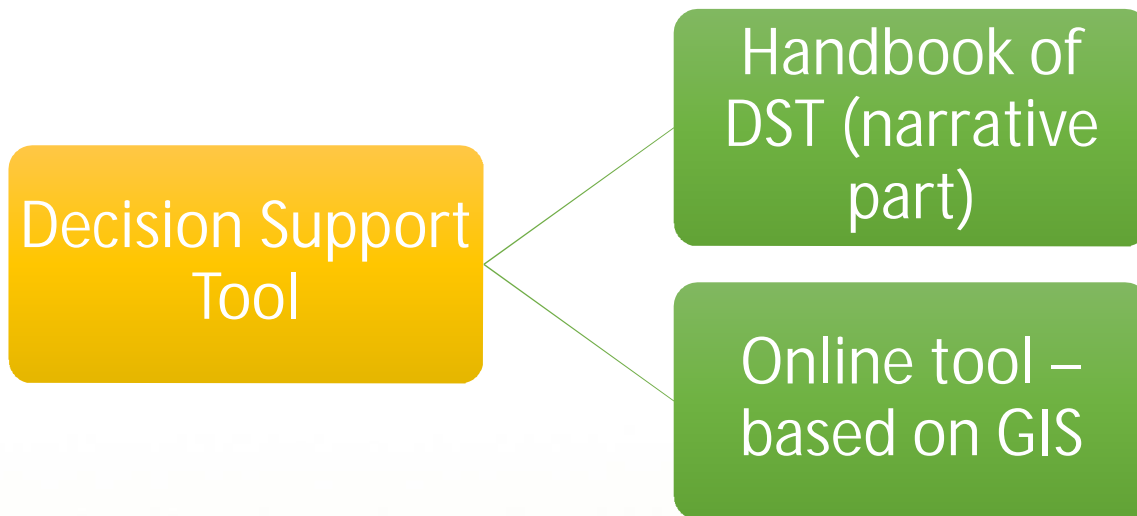


Integrator

Local teams in the field



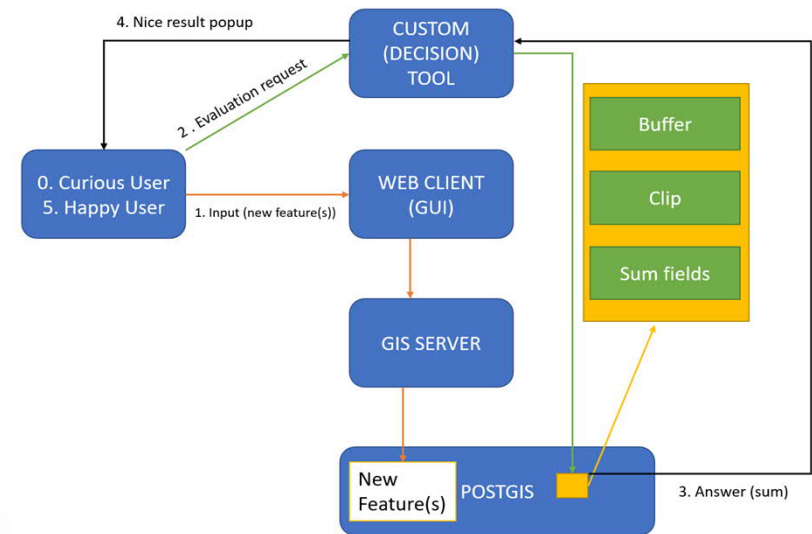
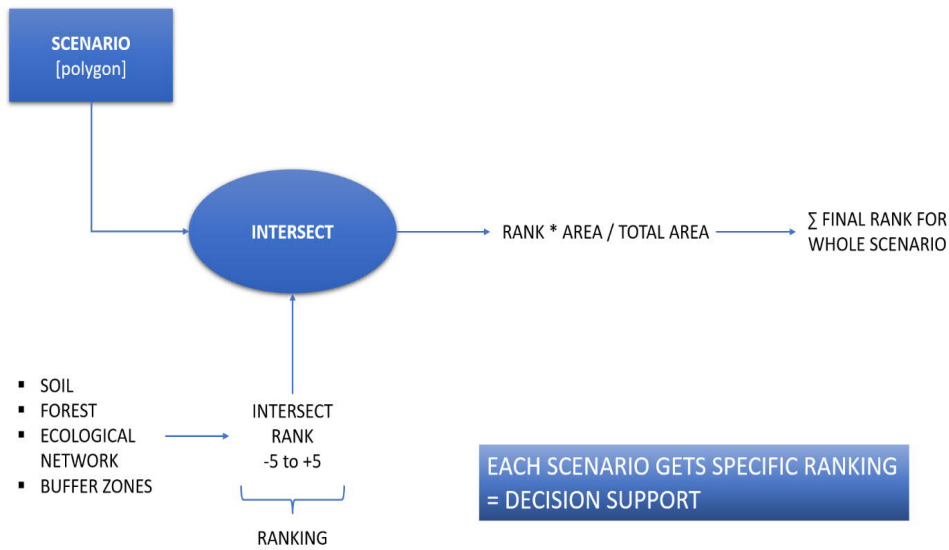
## Innovative Decision Support Tool



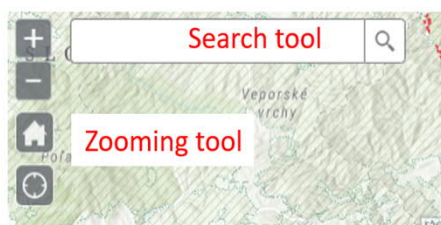
- a **GIS-based support tool** in the pre-planning phase of the decision-making process about a new investment in the territory. Its aim is to **help looking for a better alternative or a better location of a planned infrastructure** according to the **ecological value** of the area.
- **not intended to replace the planning process nor the EIA procedure**, it is meant to be the first step whether to go into the project and to be user-friendly and easy to use. It **is designed to be comprehensive and easy to use** so that anyone (planner, environmentalist, investor, municipality) can utilize it.

<https://gis.vm.stuba.sk/portal/apps/webappviewer/index.html?id=1f53713820c140989eebfa4ff9198730>

# Innovative Decision Support Tool – how it works?



## Innovative Decision Support Tool – user interface



User interface



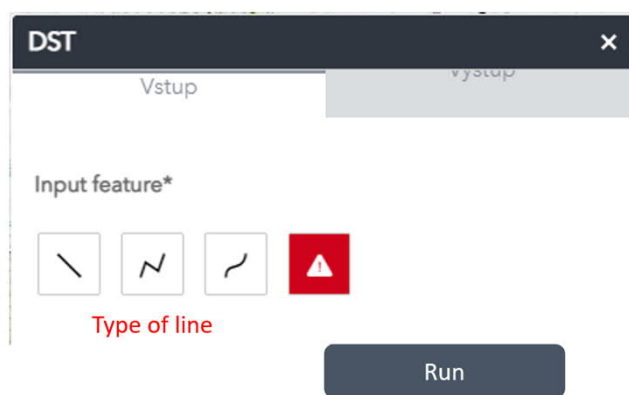
Attribute table

Legend

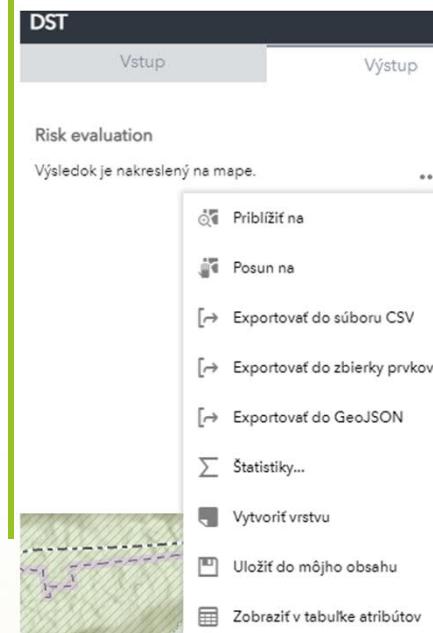
Layers

Measurement

Decision Support System



User interface - using DST – input



User interface - using DST – output

Zoom to layer

Export to CSV file

Export to JSON file

Export to GeoJSON file

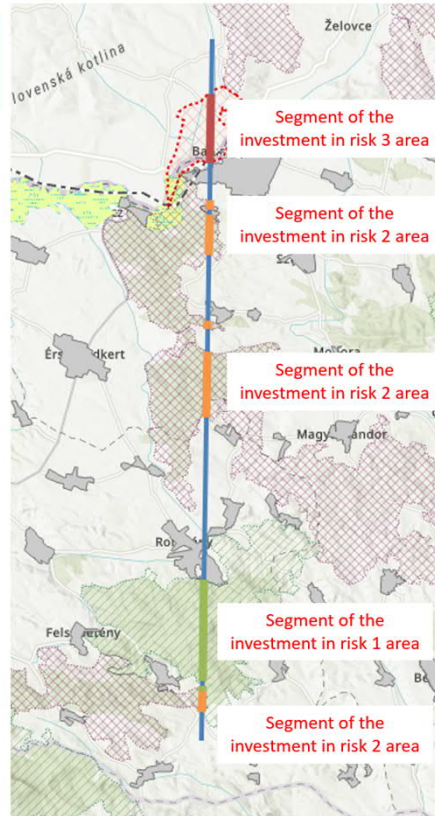
Element statistics

Create layer

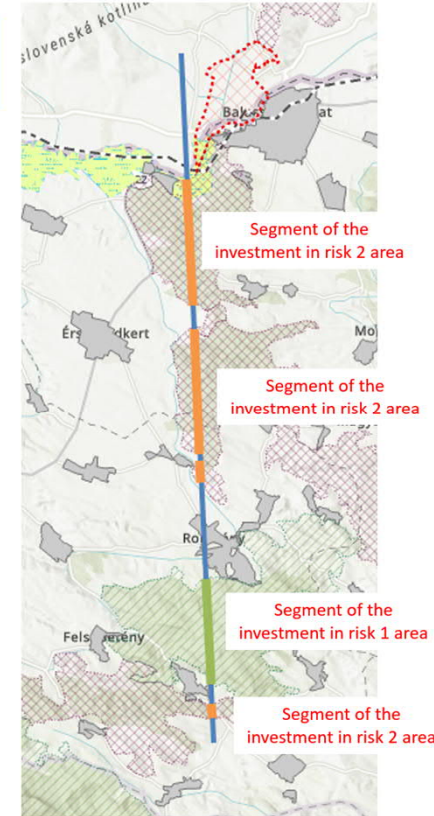
Display in attribute table (at the bottom of the screen)

## Innovative Decision Support Tool – an example

**Variant A:**  
includes risk areas of values 1, 2 and 3



**Variant B:**  
includes risk areas of values 1 and 2

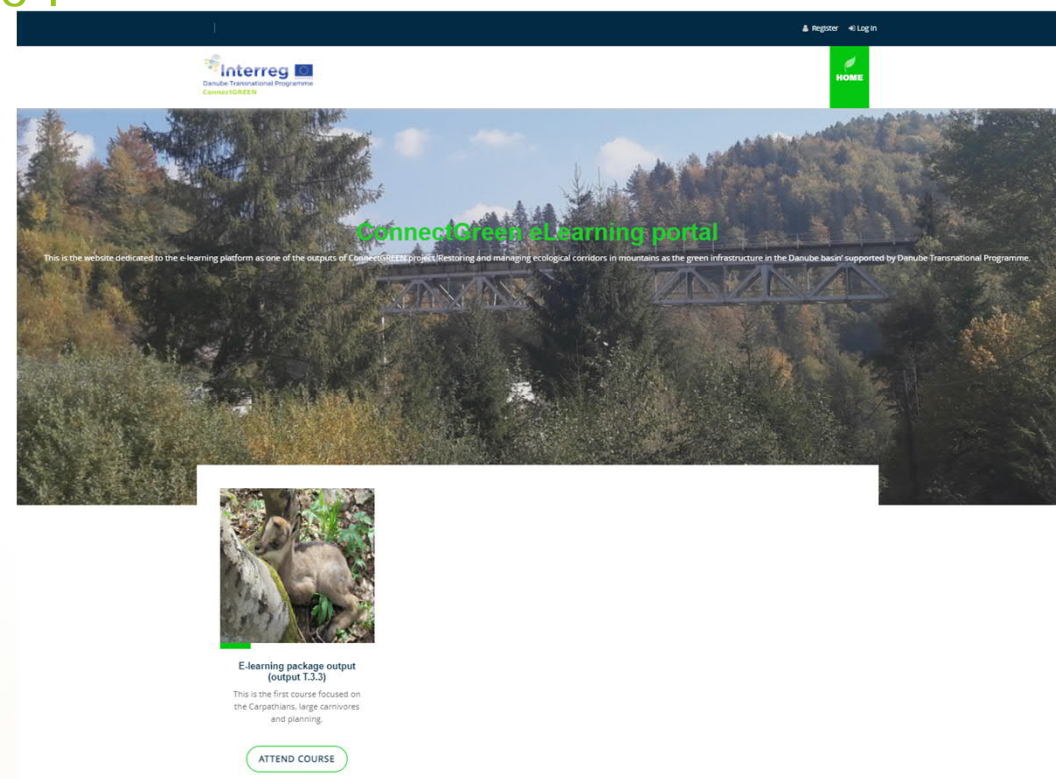




## E-learning platform

- Designed on open-source e-learning platform Moodle
  - Open registration
- After completion the user receives a certificate of completion

<http://elearning.patko.sk/>



## Objective

Training package is developed to build capacity on ecological corridor identification and management and the spatial planning tools

## 2 target groups

One course on identification, management and monitoring of eco-corridors for conservationists and protected area staff

One course on integration of eco-corridors in spatial plans dedicated to spatial planners and related professional groups, incl. authorities

## Language

Available in local languages

## Availability

The courses are available online and promoted among the protected area community, universities, local authorities and spatial planning practitioners. Registration is free for any interestees

The screenshot shows a web interface for the training package. On the left is a navigation menu with categories like Home, Dashboard, Site pages, My courses, and Modul 1. The main content area is titled 'The Carpathian Region' and features a slide titled 'IDENTIFIED METHODOLOGY FOR IDENTIFICATION OF WILDLIFE CORRIDORS FOR LARGE CARNIVORES IN THE CARPATHIAN COUNTRIES'. Below the slide are links for the slides in Czech, Hungarian, Romanian, Serbian, and Slovak languages. At the bottom, there is a text box describing the Carpathian region's extent and characteristics.



Short video in English,  
subtitled in national  
languages



Presentations in  
national languages



Learning text



Recommended  
readings



Quiz



**Certificate**

Thank You for Your attention

Vladimír Ondrejčka

Milan Husár

prof. Maroš Finka

[milan.husar@stuba.sk](mailto:milan.husar@stuba.sk)

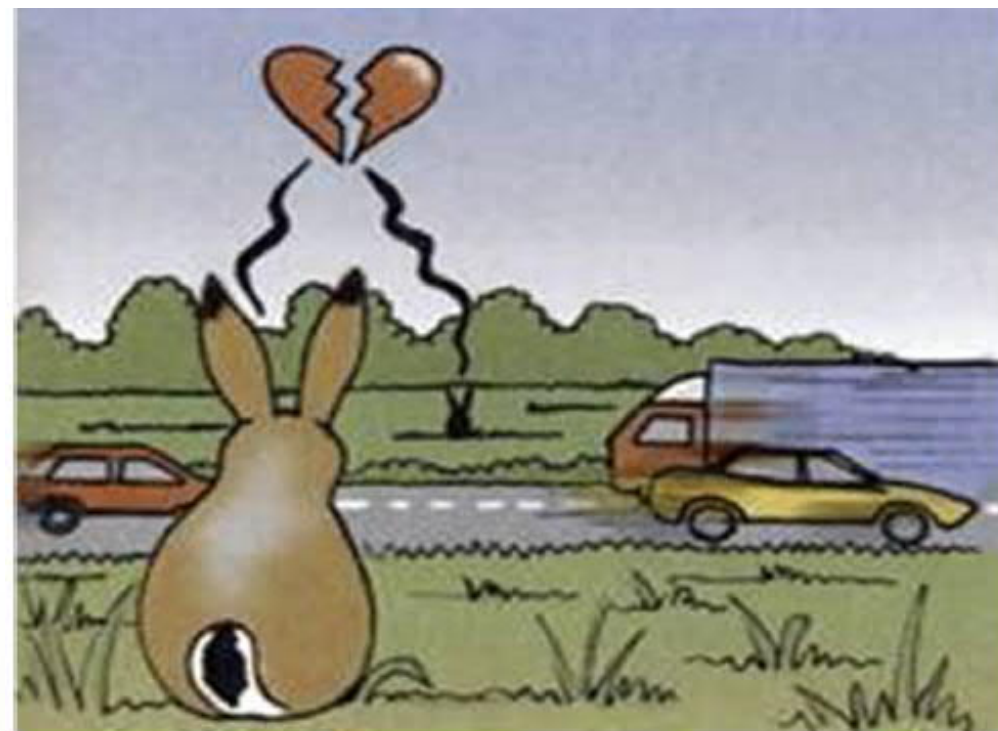
[vladimir.ondrejicka@stuba.sk](mailto:vladimir.ondrejicka@stuba.sk)

[maros.finka@stuba.sk](mailto:maros.finka@stuba.sk)

SPECTRA Centre of Excellence of the EU,  
Slovak University of Technology in Bratislava



**SPECTRA**  
Centre of Excellence



Protected Areas – Cornerstones of Ecological Connectivity in the Carpathians and Beyond

International Conference, Visegrád, Hungary, 28-30 September 2021 - Project co-funded by European Union Funds (ERDF, IPA)