

# Examples of best practices of protected areas management and networking

Marie PETRŮ and Barbora DUŽÍ,  
Education and Information Centre of the White Carpathians,  
Czech Republic



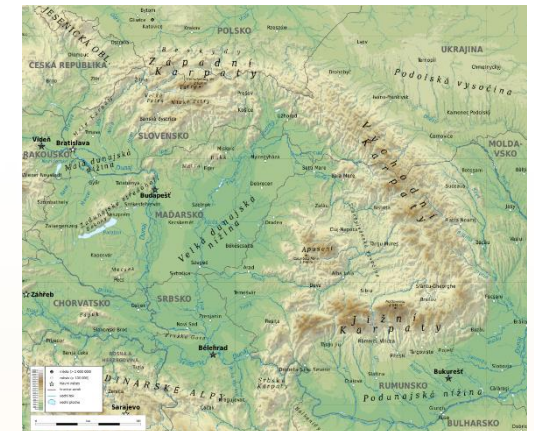
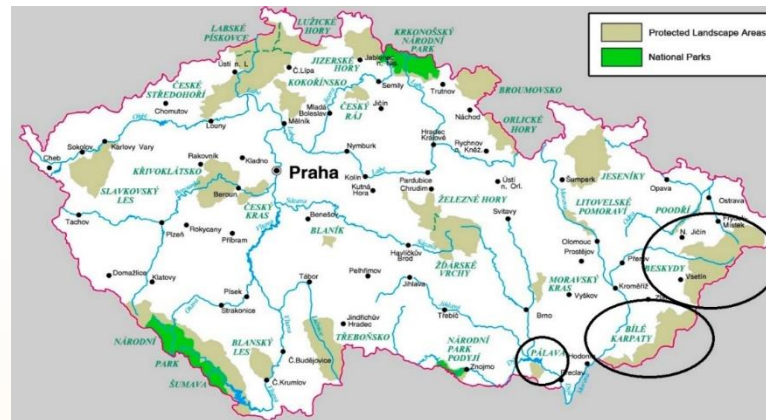
# Key points of presentation

- 1) Environmental education, raising of public awareness, and local guiding in the Bílé Karpaty PLA
- 2) Cross-border cooperation between the Bílé Karpaty PLA Czech Republic and the Biele Karpaty PLA Slovakia.

*Note: Bílé Karpaty – Biele Karpaty - White Carpathians – Carpazi Bianchi*

# Introduction of our organisation

- NGO, established in 1997, currently supported by the Nature Conservation Agency of the Czech Republic, various funding and grants (Interreg, LIFE, Ministry of Environment, Regional grants, Veselí nad Moravou municipality grants etc.)
- Seat: Veselí nad Moravou, Czech Republic
- Geographical scope: PLA Bílé Karpaty, south-east Moravia, Carpathians



Protected Areas – Cornerstones of Ecological Connectivity in the Carpathians and Beyond

International Conference, Visegrád, Hungary, 28-30 September 2021 - Project co-funded by European Union Funds (ERDF, IPA)

# The main mission is to:

- Provide environmental education (schools, teachers, programs indoor, excursion outdoor...)
- Raise of public awareness in PLA Bílé Karpaty and south-east Moravia (public, tourists)
- Provide environmental counselling and information about nature protection
- Create and provide tourist information, tourist information materials, tourist infrastructure,
- Provide and educate people in the field of tourism and local guiding,
- Cooperation and creation of various strategic materials in the field of sustainable tourism, nature protection and local development,
- Cooperation on local, regional, national and interantional level

# 1a) Environmental education

Indoor

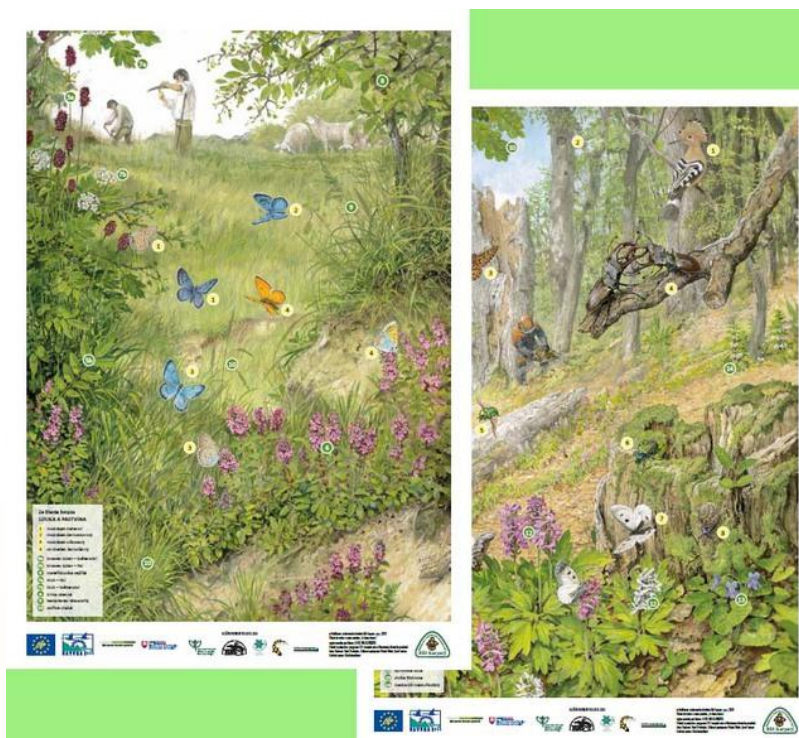
Outdoor - forests, meadows, water...



Protected Areas – Cornerstones of Ecological Connectivity in the Carpathians and Beyond

International Conference, Visegrád, Hungary, 28-30 September 2021 - Project co-funded by European Union Funds (ERDF, IPA)

# Educational programs and materials



# 1b) Rising of public awareness

Excursion: natural and cultural heritage

Workshops: protection of natural and cultural heritage



# 1c) Tourist infrastructure



  
**doháje.cz**  
 Okolo Bzenecké  
 Doubravy  
 MARIÁNSKÝ SLOUP

  
 GPS: N 48° 58.393', E 17° 16.026'

  
 HTTP://M.TAGGMANAGER.CZ/989

**TURISTICKÉ INFORMACE DO MOBILU**  
 Poutavé detaily o přírodních zajímavostech a význačných místech "vyfocením" kódu telefonem  
 V telefonu spusíte aplikaci pro čtení taggů, vyfotíte čtenářský kód a okamžitě připojení informace o místě, kde se nacházíte se automaticky zobrazí na displeji.  
 Aplikaci zdarma pro Vaš telefon a více podrobností najdete na <http://m.dohaje.cz>  
 Mohou být účtovány poplatky za přenos dat dle operátora

 Taggmanager.cz Ministerstvo životního prostředí



# 1c) Tourist and Local guiding

Creation of tourist trails and offer of local guiding

Education of local guides



# 1d) Following conditions for doing this

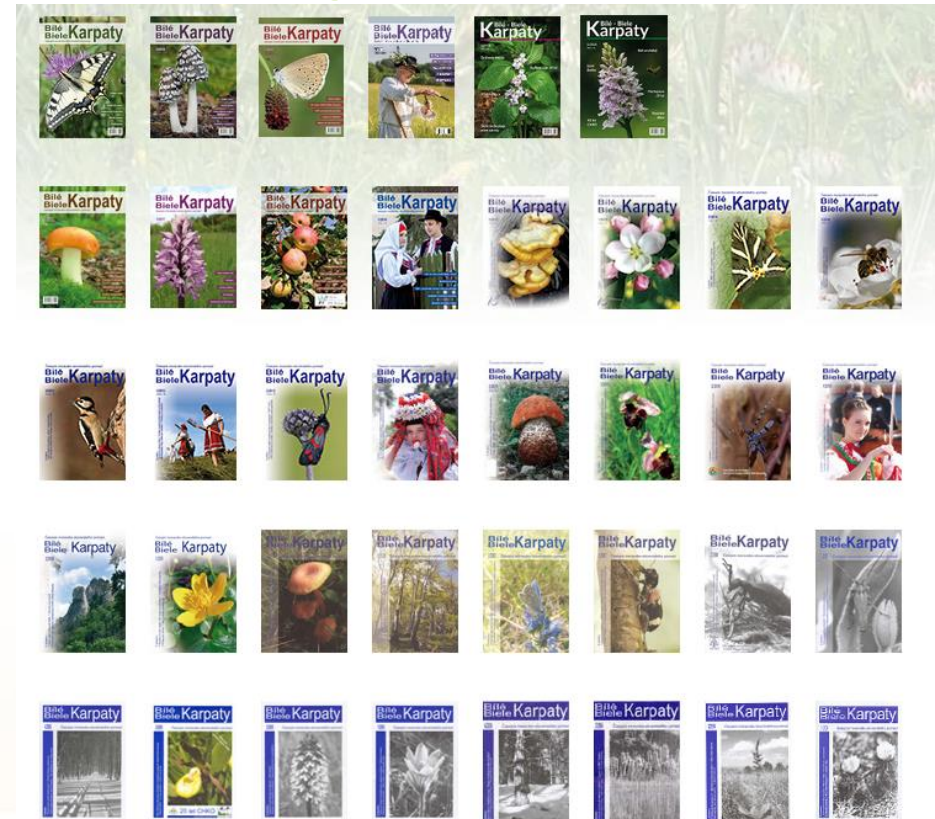
- Cooperation with experts, NOGs, and PLA Bílé Karpaty employees
- Respect of local conditions, local culture
- Respect of nature and landscape protection conditions and legislation
- Respect of conditions in Visitor Communication and Management Strategy in the Bílé Karpaty PLA
  - it is a key instrument for presentation of the PLA and strategical document of tourism sustainable development in territory;
  - it summarises and recommends key methods of interpretation and sources of natural and cultural heritage in the area;
  - includes limits to visitor use (land use) and tourism related activities in PLA

## 2) Cross border cooperation

- Exchange of information
- Exchange of experiences, methods
- Common Marketing
- Common cultural events
- Common projects, research, nature protection management (LIFE, Centralparks)

## 2a) Journal Bílé- Biele Karpaty

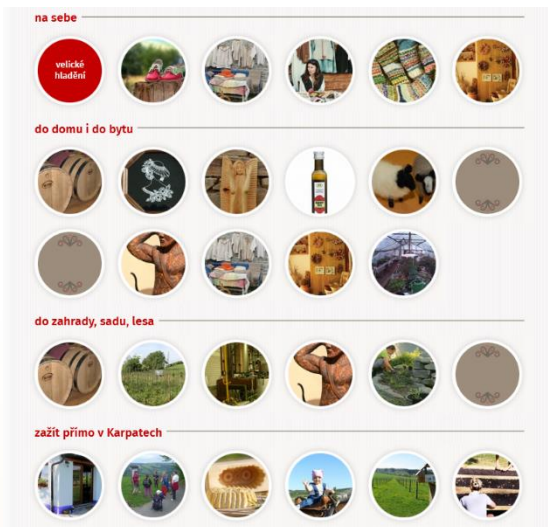
- Published since 1995 , currently 2x / year
- Cooperation between PLAs, NGOs, mayors, local experts, inhabitants etc...
- Provides information from Management of PLAs, information about region, history, news from Czech and Slovak sides, interesting information about natural and cultural heritage, protected and interesting sites, cultural events, environmental education etc.



# 2b) Tradice Bílých Karpat

Regional mark of products and services (food, drinks, clothes, art and crafts)

Czech and Slovak side – Bílé, Biele Karpaty



# Examples: old varieties of fruits, natural gardening

## Školkařské výpěstky

Dodavatel

**Pešek Radim**

Bojkovice

Telefon: 777579776

E-mail: [ajsa1@seznam.cz](mailto:ajsa1@seznam.cz)

Web: <http://stareodrudy.org>

[Více o dodavateli](#)



Radim Pešek se věnuje pěstování a prodeji stromků a keřů starých a méně známých odrůd. Jeho školka nabízí na třicet odrůd jablek a téměř dvacítka hrušní, oskeruše a moruše. Pěstitelé u něj mohou koupit také keře klokoče, arónii, sazenice mišpulí, dřínu či kdouloní. K netradičním dřevinám patří mrazuvzdorné kiwi, zimolez kamčatský, meruzalka plodová, ostružina beztrnná a dále angrešt odolný padlí nebo švestky tolerantní vůči šarce. Rostliny jsou produkovány většinou jako sadba v kategorii CAC

## Permakultúrne poradenstvo, návrhy a realizácie

Dodavateľ

**Súkeníková Katarína, Ing.**

Trenčín

Telefon: 0907163706

E-mail: [ksgemma@gmail.com](mailto:ksgemma@gmail.com)

Web: <http://www.prirodavzahrade.sk>

[Více o dodavateli](#)



Katarína Súkeníková je vyštudovanou záhradnou a krajinnou architektkou, ktorá sa vo svojom odbore naozaj našla. Venuje sa odbornému poradenstvu v oblasti prírodných záhrad, ich navrhovaniu a tvorbe, ale jej srdcovou záležitosťou a inšpiráciou je permakultúra. Snaží sa cez ňu prinavracieť krajine jej prirodzenú funkciu a druhovú rozmanitosť, pričom pri návrhoch uprednostňuje domáce druhy rastlín a drevín. Ako sama vraví: „Svojou prácou chcem prispieť k trvalo udržateľnému životu na zemi. Nechcem s prírodou bojovať, ale spolupracovať.“

# Common projects: LIFE of insects

Cross border cooperation with PLA  
Biele Karpaty, Beskydy and NGOs

- Research and protection of selected insects of NATURA 2000
- Creation of educational materials
- Management of protected areas



# Thank you very much for your attention

- Marie Petrů, Barbora Duží
- Education and Information Centre Bílé Karpaty
- [petru@bilekarpaty.cz](mailto:petru@bilekarpaty.cz)
- <https://vis.bilekarpaty.cz>
- <https://www.facebook.com/visbilekarpaty?ref=hl>