



Tatras at the CROSSROADS

Svetlana Belova





helps re-connecting nature, culture
and modern world for 13 years



Our **mission** is to support national parks and other PAs as guardians of nature and traditional culture and as places of inspiration and admiration for humankind.

Focus on priority areas:

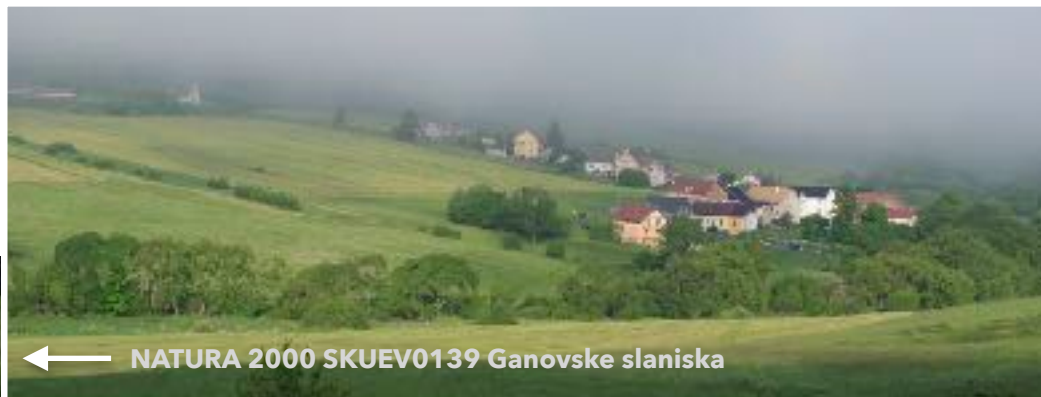
- ◆ Biodiversity and cultural landscape conservation
- ◆ Ecological tourism development
- ◆ Linking nature, art and culture
- ◆ Pro-biodiversity business development

Since 2008, we implemented **10** international conservation projects for **3 mil. EUR** that provide significant added value to local communities, organized 40 study-tours and wilderness expeditions for 300+ specialists of PAs.



2013: Machaon engaged artists in the promotion of unique natural and cultural heritage of Ganovce

2020: Machaon stood up for the conservation of the Ganovce Brook Valley representing a preserved piece of rural landscape with a high landscape-ecological and cultural-historical value for Slovakia



Milujem zelené Gánovce



Today there are 1428 residents in contrast to 657 residents in 1991

Today there are 360 houses in contrast to 184 houses in 1991

Today there are about 700 cars in contrast to 150 cars in 1991
(traffic jams are common)

Today there are 22,5 ha of land allocated in urban plan for individual houses (plots for about 222 new houses), however there is a proposal to change the urban plan by increasing this capacity for another 30+ ha for housing including the Ganovce brook valley described as the most valuable and biodiverse landscape segment

There is no school, no medical center, limited facilities for sport and culture, no job opportunities.

There are a few buses a day to the nearby town of Poprad.

In contrast the town of Poprad had population of 56.132 in 2001 and only 49.861 residents in October 2020.



Unsuccessful due to low level of participation: 254 people from 1,100 residents said “NO” to the new construction in Ganovce Brook Valley, only 4 said “YES”

It helped to improve the understanding of official approval processes of suburbanization which are influenced by often incompetent and illegal action by local and regional authorities including Tatra NP administration

It became clear that the issue of Ganovce is only a little segment of the incredible **huge scale of uncontrolled urban development** in the entire Tatra region imposing threats to biodiversity and human wellbeing

The president of Machaon International was selected by the government to the post of Head of Poprad district (administration of Tatra Region) and gained leverage to finding suitable solutions.



Another typical example of unbridled unsustainable rural development in the buffer zone (!) of Tatra national park in the immediate vicinity to the prime habitat of large mammals (e.g. bears, wolves, deer)

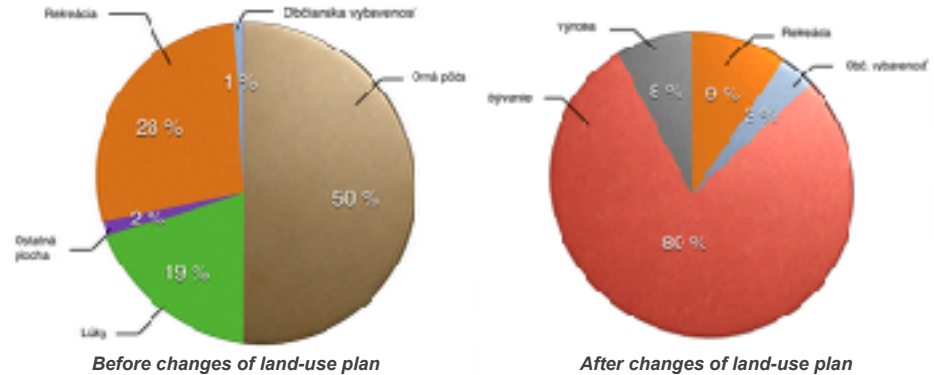


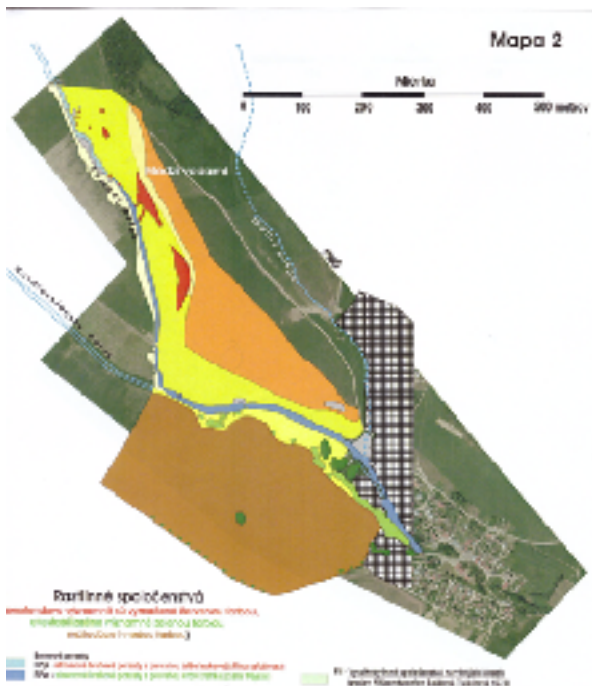
How apartment complexes help tourism and create jobs?



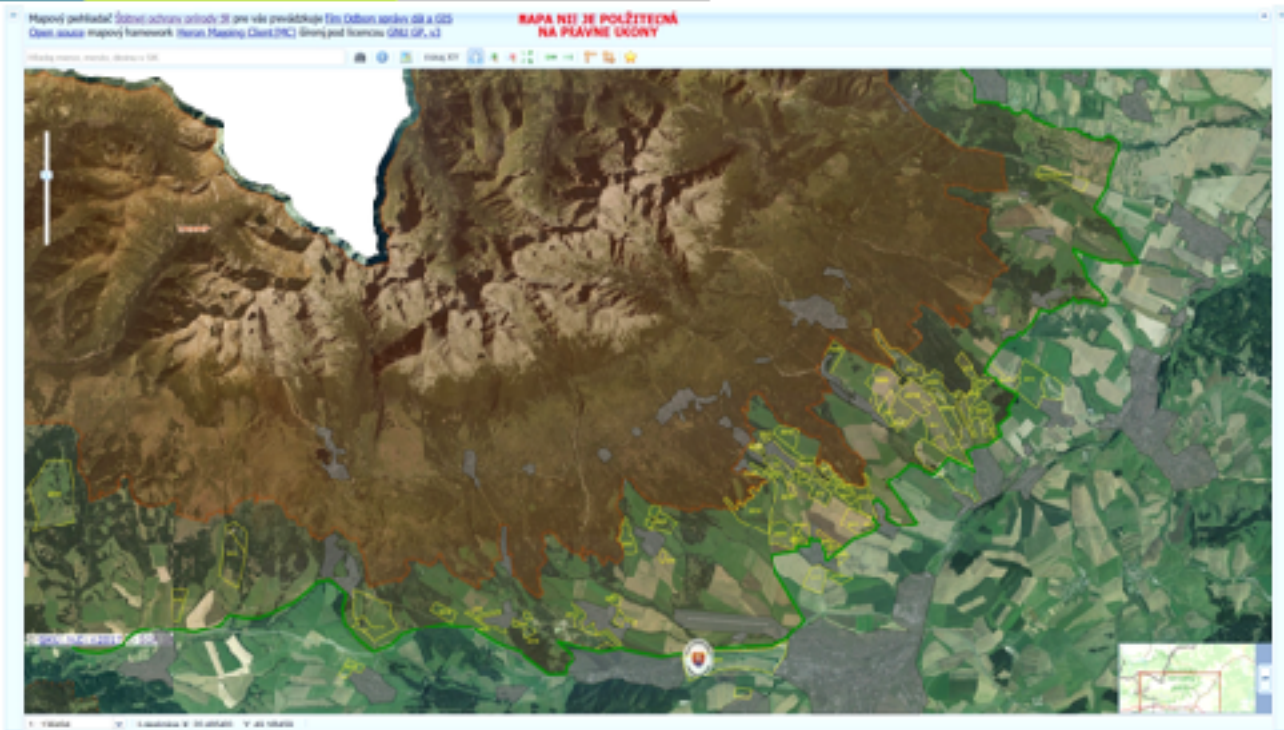
A typical picture in the Tatra region when “agriculture land” near any village is being changed to “built-up area”

“Beautifully blossoming meadows, where for conservation reasons even grazing of cattle is restricted, suddenly turn into building plots”
Pavel Barabas, film-maker



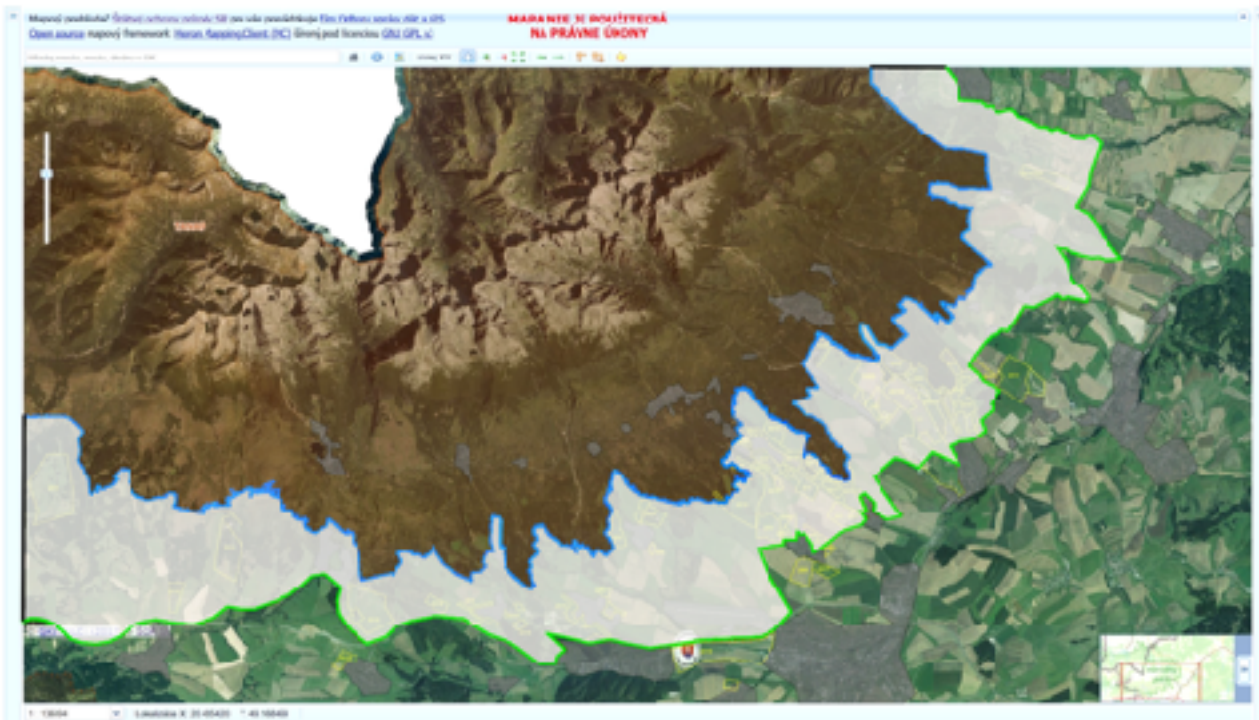


How will the landscape near High Tatras look like in a few years time?



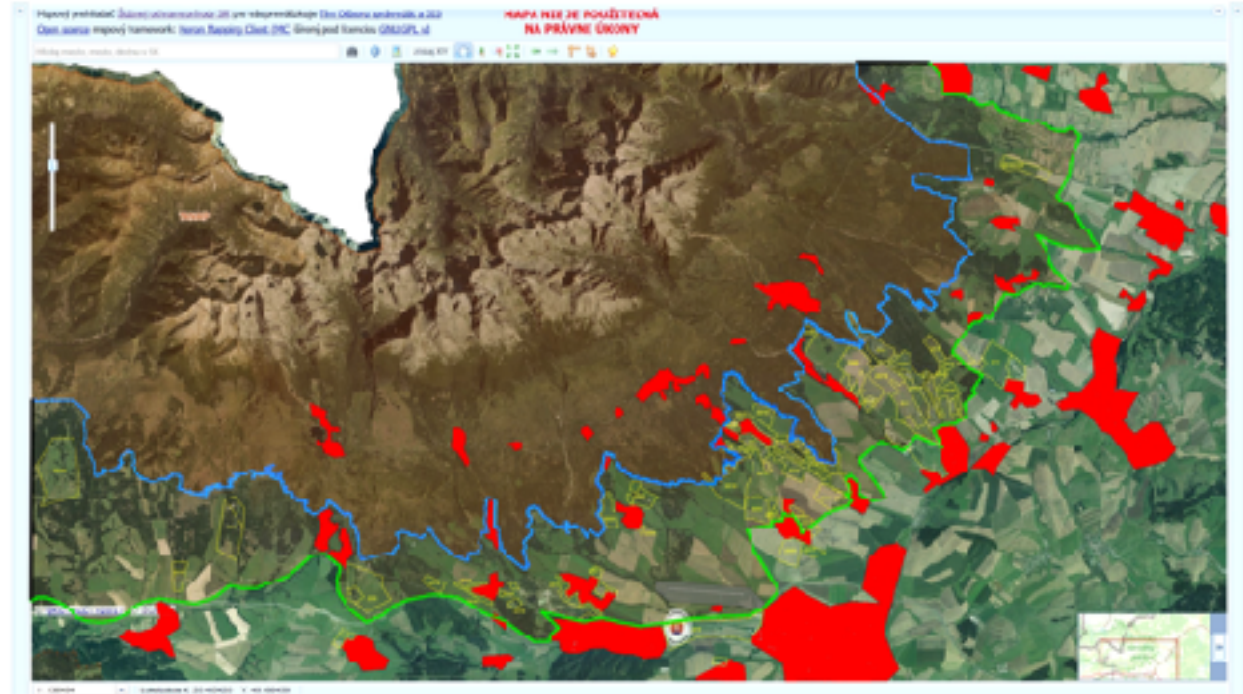
Areas and urban plans of two districts Poprad and Kezmarok covering the eastern part of the Tatra National Park were analyzed.

BUFFER ZONE OF TATRA NATIONAL PARK IN SLOVAKIA



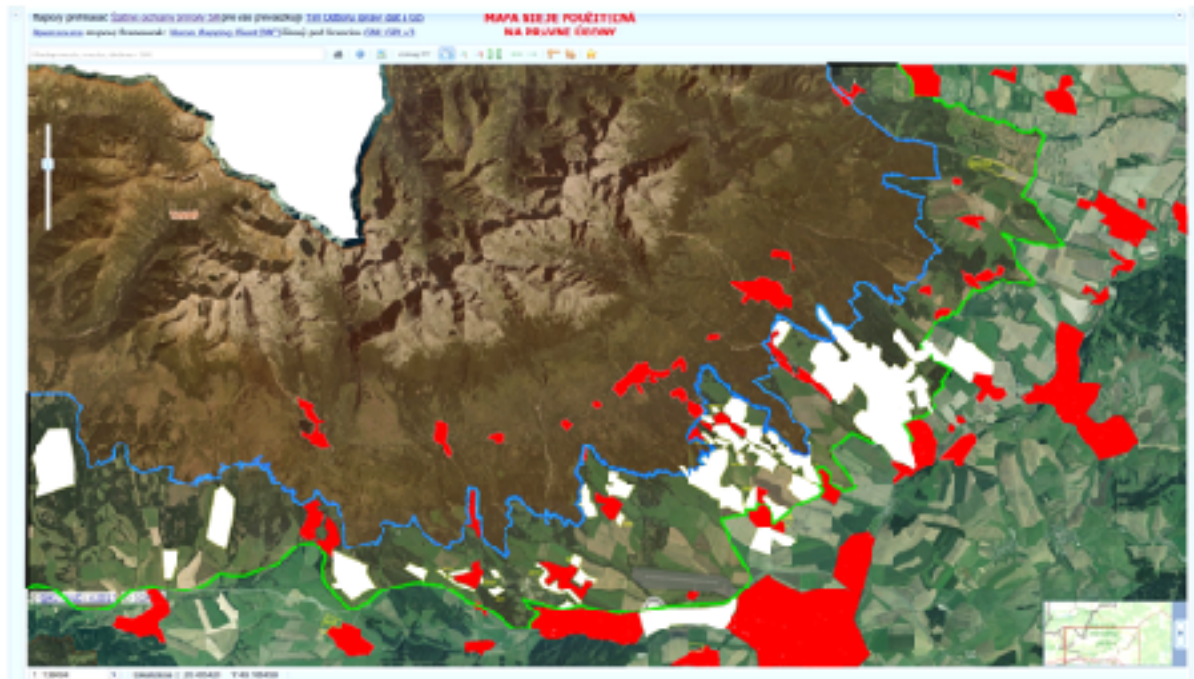
Visualisation was created by Dr. Elena Bukvareva

Red squares -
already built-up
areas in the buffer
zone of Tatra
National Park and
close to national
park



Visualisation was created by Dr. Elena Bukvareva

White squares indicate the officially approved land for built-up areas in the buffer zone of Tatra National Park.

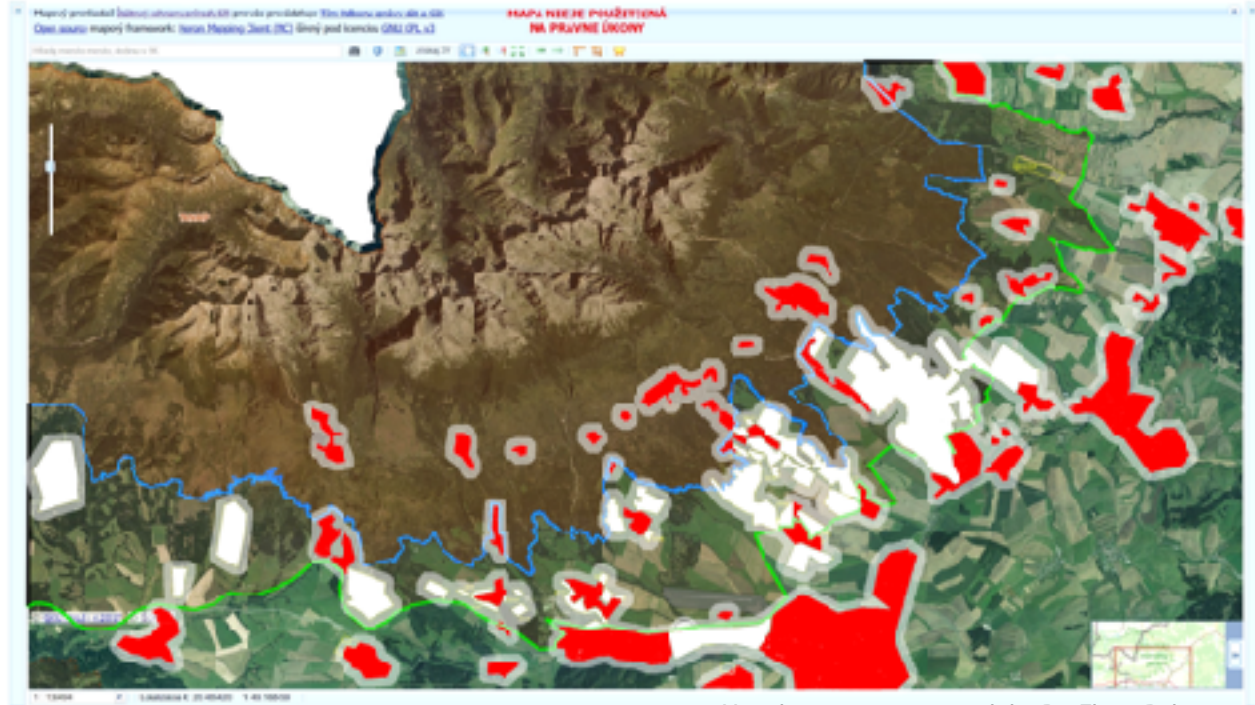


Visualisation was created by Dr. Elena Bukvareva

Buffer zone of the national park was made practically non-existent and non-functional

Grey areas in the map depict 300 m of human impact on wildlife and vice versa

What do you think about ecological connectivity in the buffer zone of Tatra National Park?



Visualisation was created by Dr. Elena Bukvareva

Negative impacts and consequences for the buffer zone of the national park

Negative impact	Consequences
<p>Loss of about 1/3 of the area of agro-ecosystems and habitats of agro-biodiversity</p>	<p>Decrease in the number of species, possibly the disappearance of some species from the buffer zone</p> <p>Reduced potential of agriculture, including organic farming</p> <p>Weakened regulatory ecosystem services, including water regulation services provided by agro-ecosystems</p>
<p>Loss of ecological corridors and increased isolation of ecosystems on different banks of the valley</p>	<p>Reduced resilience of ecosystems and populations and their ability to adapt to climate change</p>
<p>Negative impact of development and increase in population density on surrounding ecosystems</p>	<p>Decreased stability of ecosystems in the buffer zone as well as in main territory of the NP as a result of increased anthropogenic pressure, which is dangerous under climatic changes</p>
<p>Destruction of the visual appearance of the landscape</p>	<p>Decrease in the recreational attractiveness of the region, in the long term - decrease in income from tourism</p>

Visual impact on landscape



Visualisation was created by Dr. Elena Bukvareva

Now



Visual appearance of the landscape in the buffer zone of Tatra national park

In 20 years - TATRACITY?



Visualisation was created by Dr. Elena Bukvareva



NEW TATRA APARTMENT GHETTOS

without any social infrastructure -> perspective of huge traffic





**STARA LESNA
(NEW “APARTMENT
CAGES” IN BUFFER
ZONE OF TATRA
NATIONAL PARK)**

YEAR 2021 - 145th ANNIVERSARY of climatic healing in the HIGH TATRAS

DO WE PASS ANOTHER ANNIVERSARY EVER ???



← CLIMATE SPA TOWN
NOVÝ SMOKOVEC BEFORE

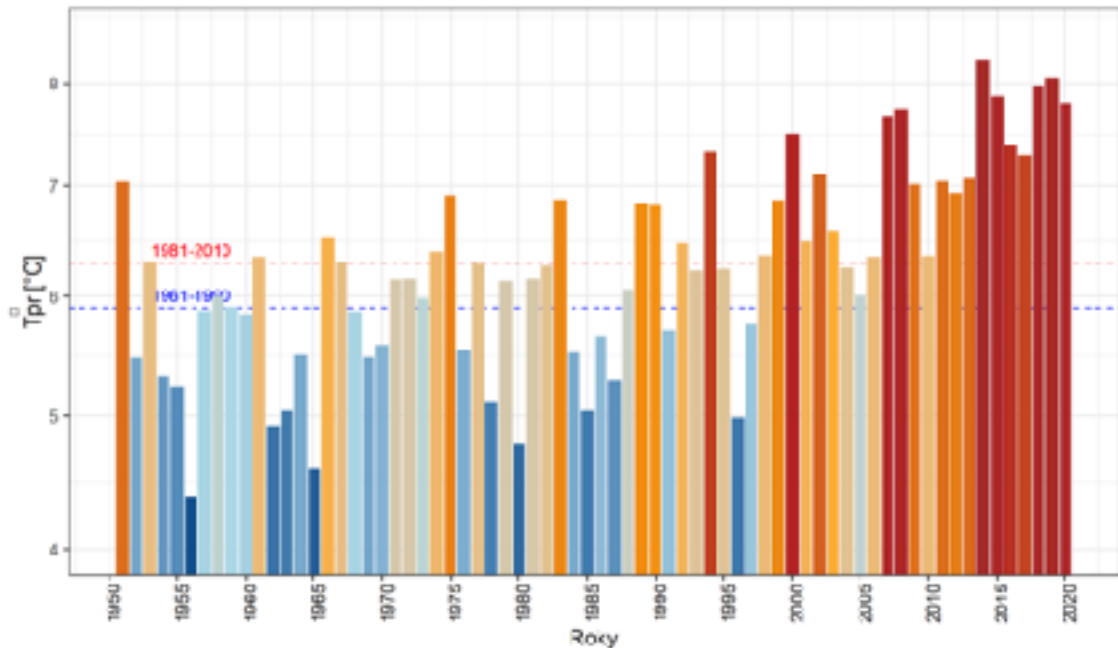


CLIMATE SPA TOWN
NOVÝ SMOKOVEC NOW →

The average temperature in the region has risen 3-4^o C over 40 years in contrast to global average temperature change of 1.5^o C (based on measurements of Slovak Hydro-meteorological Institute)

This will have tremendous consequences on both nature and society in the region, **uncontrolled development is partially the driver of this change.**

Priemerná ročná teplota vzduchu (Poprad)



Environmental impact assessment was not used in the buffer zone of Tatra national park

The Slovak government in the last decade has loosened its grip on the control of the quality of the environment and employed subservient and easy-to-bribe officials in state institutions who let oligarchs and greedy investors to do all developments they desire.

So far, the new government elected in 2020 is aware of the bad situation, but still has not made corrections to the situation.

All 3 officials who skipped EIA and created the situation are still in position to make further decisions in 2 districts of Tatra region.

Tatra NP administration is silent.

číslo	Diac	náč. E	Rok	Stavoviska k potrebe EIA			Stavovisko OÚ Bratislava	Stavovisko OÚ TATRA-Pu	Pochybnosť OÚ Bratislava
				Čiastka	Objekt	Vodná			
1	Magnusova	Arma zóna - nové zariadenie	2010-2018	NE	NE	NE	NE	NE	NE
2	Berbovce	1 075 parcely	2011-18	NE	NE	NE	NE	NE	NE
3	Berbovce	Lupaň skobla	2011-18	NE	NE	NE	neobjavený	bez vyjadrenia	NE
4	Nová Lúča	1. úsek č. 104/10	2011-18	NE	NE	NE	NE	bez vyjadrenia	NE
5	Berbovce	512 HÚ	2011-18	NE	NE	NE	NE	bez vyjadrenia	NE
6	Berbovce	0 11 HÚ	2011-18	NE	NE	NE	NE	NE	NE
7	Berbovce	1. úsek č. 104/10	2011-18	NE	NE	NE	NE	NE	NE
8	Berbovce	4. úsek HÚ	2011-18	NE	NE	NE	NE	bez vyjadrenia	NE
9	Berbovce	2. úsek č. 104/10	2011-18	NE	NE	NE	NE	bez vyjadrenia	NE
10	Berbovce	3. úsek č. 104/10	2011-18	NE	NE	NE	NE	bez vyjadrenia	NE
11	Berbovce	Prírodné národné parky	2011-18	NE	NE	NE	NE	bez vyjadrenia	NE
12	Berbovce	Nová Lúča	2011-18	NE	NE	NE	neobjavený	bez vyjadrenia	NE
13	Berbovce	6. úsek č. 104/10	2011-18	?	NE	NE	NE	bez vyjadrenia	NE
14	Keľský Slanovec	Územný plán	2011-18	NE	NE	NE	NE	bez vyjadrenia	NE
15	Magnusova	Prírodné národné parky	2011-18	NE	NE	NE	neobjavený	bez vyjadrenia	NE
16	Magnusova	Prírodné národné parky	2011-18	?	NE	NE	NE	bez vyjadrenia	NE
17	Mlynska	1 04/10 HÚ	2011-18	NE	NE	neobjavený	neobjavený	bez vyjadrenia	NE
18	Berbovce	Prírodné národné parky	2011-18	NE	NE	neobjavený	neobjavený	bez vyjadrenia	NE
19	Nová Lúča	2	2011-18	NE	NE	NE	NE	bez vyjadrenia	NE
20	Berbovce	Administratívne St. HÚ	2011-18	NE	NE	NE	NE	bez vyjadrenia	NE
21	Berbovce	2. úsek č. 104/10	2011-18	NE	NE	NE	NE	bez vyjadrenia	NE
22	Berbovce	6	2011-18	NE	NE	NE	NE	bez vyjadrenia	NE
23	Berbovce	Nová Lúča	2011-18	NE	NE	NE	NE	bez vyjadrenia	NE
24	Berbovce	1 075 HÚ	2011-18	NE	NE	NE	NE	bez vyjadrenia	NE
25	Berbovce	Prírodné národné parky	2011-18	NE	NE	NE	NE	bez vyjadrenia	NE
26	Mlynska	2. úsek č. 104/10	2011-18	NE	NE	NE	NE	bez vyjadrenia	NE
27	Mlynska	Prírodné národné parky	2011-18	NE	NE	NE	neobjavený	bez vyjadrenia	NE
28	Berbovce	4. úsek	2011-18	NE	NE	NE	neobjavený	bez vyjadrenia	NE
29	Berbovce	Prírodné národné parky	2011-18	NE	NE	NE	neobjavený	bez vyjadrenia	NE
30	Mlynska	2. úsek č. 104/10	2011-18	NE	NE	neobjavený	neobjavený	bez vyjadrenia	NE
31	Keľský Slanovec	2. úsek č. 104/10	2011-18	NE	NE	NE	NE	bez vyjadrenia	NE
32	Keľský Slanovec	1 04/10 HÚ	2011-18	NE	NE	neobjavený	neobjavený	bez vyjadrenia	NE
33	Keľský Slanovec	1. úsek č. 104/10	2011-18	NE	NE	NE	NE	bez vyjadrenia	NE
34	Berbovce	0 11 HÚ	2011-18	NE	NE	NE	neobjavený	bez vyjadrenia	NE
35	Berbovce	1 04/10 HÚ	2011-18	NE	NE	NE	neobjavený	bez vyjadrenia	NE
36	Berbovce	0 11 HÚ	2011-18	NE	NE	NE	neobjavený	bez vyjadrenia	NE
37	Mlynska	Prírodné národné parky	2011-18	NE	NE	NE	NE	bez vyjadrenia	NE
38	Berbovce	2. úsek č. 104/10	2011-18	NE	NE	NE	neobjavený	bez vyjadrenia	NE
39	Berbovce	0 11 HÚ	2011-18	NE	NE	NE	neobjavený	bez vyjadrenia	NE
40	Nová Lúča	4. úsek č. 104/10	2011-18	NE	NE	NE	NE	bez vyjadrenia	NE
41	Berbovce	Prírodné národné parky	2011-18	NE	NE	NE	NE	bez vyjadrenia	NE
42	Nová Lúča	6. úsek č. 104/10	2011-18	NE	NE	NE	NE	bez vyjadrenia	NE
43	Berbovce	Prírodné národné parky	2011-18	NE	NE	NE	NE	bez vyjadrenia	NE

*The foothills of the High Tatras are being transformed and losing the character of exceptionality. The smallest high mountains in the world will (thanks to the market forces) be surrounded by the **sea of apartment houses and holiday homes designed for profit** without a relationship to the landscape, without respect or understanding of its spiritual values we inherited.*

*The biggest problem today is the lost relationship with the countryside, our low respect for homeland and for nature. As we deal with landscape today, so it will feed back to us in the future. **Many of us feel helpless.***

*What can we do about it when it is already approved in the urban plan? Cases where a corrupt official with a round stamp can decide without penalty to the detriment of the public interest, the country, or the protection of the environment are multiplying within our society as cancer metastases. **But how to defend ourselves against this cancer-like process that affects our country?***



Who is to blame?

Tatra National Park administration basically approved that **park's buffer zone will be declined to the 50 m wide strip of land** along the national park boundary, i.e. buffer zone will cease in existence as a key element of ecological connectivity and protection of the core zone.

Tatra National Park administration **did not require any EIA during 14 years**, so the competent district authorities approved to skip the EIA process in all individual cases of urban plan changes in all villages in the buffer zone.

Is UNESCO MAB Biosphere Reserve status endangered?



Tatra National Park
administration



Local stakeholders
and famous personalities

The government institutions including the Tatra National Park administration **have no dialogue with local stakeholders**, in contrary there is a growing dissatisfaction and mistrust among various local stakeholders towards the competent officials who gave their seal of approval to all the urban sprawl we face. The Tatra National Park administration lost its credibility in the region.

There was a big petition in July 2021 signed by a long list of representatives of local municipal authorities, science, tourism and cultural sectors who require the government to act and to rectify the situation.

Director of Tatra NP refused ANY open discussion!

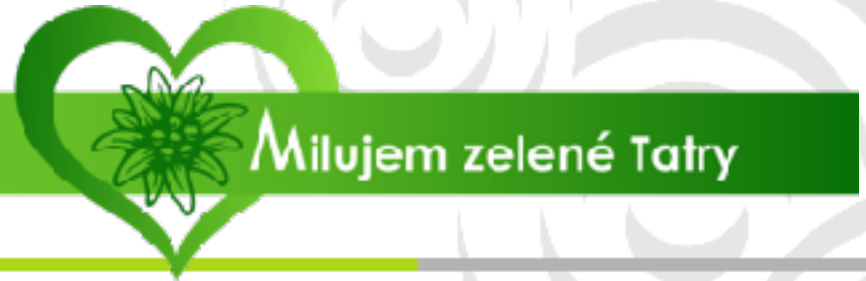
At the government level

The issues were raised by the head of the Poprad district authority who also initiated **that the topic of uncontrolled urban development must be revised and corrected by the national government.**

We expect an adequate response and action from the government, e.g. declaration of **building moratorium in problematic villages** in the districts of Poprad, Kežmarok and Liptovský Mikuláš.

At the level of civic society

Public initiative **We love green Tatras** was formed uniting NGOs and active citizens from the region to raise the issue to the general Slovak and international public and to force relevant authorities to react and act in line to rectify the unwanted situation.



What will be done in the near future?

Wide-ranging public campaign by a special film „Tatras in danger“ (already in process)

Sharing relevant information and uniting concerned citizens and stakeholders

Promotion and discussions among active and concerned citizens to engage in the process by becoming local municipal councillors and mayors

Development of project focused on policy making
“RegioClima – building regional ecosystem resilience for climate change by improved strategic planning and adequate ecosystem management processes at the regional level





NEW SUPPORTERS ARE WELCOME!



The destiny of Tatra Mountains is at the crossroads and you can be part of the solution by providing feedback and expert advice.

Machaon calls all to join forces to help Tatra region





Thank you for your attention!



Svetlana Belova

Director of Machaon International

Lucna 2, Ganovce, Slovakia

+421917449943

zapovedniks@gmail.com

www.machaon.eu



**Machaon
International**

