



Interreg



EUROPEAN UNION

Danube Transnational Programme

DanuBioValNet

Translating the results of INTERREG DTP into
sustainable outcomes

Danube S3 Final Conference

October 21, 2021

Project co-funded by European Union funds (ERDF, IPA)

15 Project Partners + 2 Associated Partners

10 Countries

Germany

- BIOPRO Baden-Württemberg GmbH
- ClusterAgentur Baden-Württemberg
- Ministry of Economic Affairs, Labour & Housing Baden-Württemberg

Czech Republic

- National Cluster Association

Austria

- Foodcluster OÖ
- Cleantechcluster OÖ

Slovenia

- Ministry of Science
- Anteja ECG

Croatia

- Ministry of Economy, Entrepreneurship and Crafts
- Croatian Wood Cluster



Slovakia

- Prounion

Romania

- Ministry of Economy
- Clustero
- Institute of Economical Forecasting

Bulgaria

- Association of Bulgarian Clusters

Serbia

- Institute of Mechanical Engineering

Montenegro

- Vinecluster of Montenegro

■ Danube Transnational Programme area

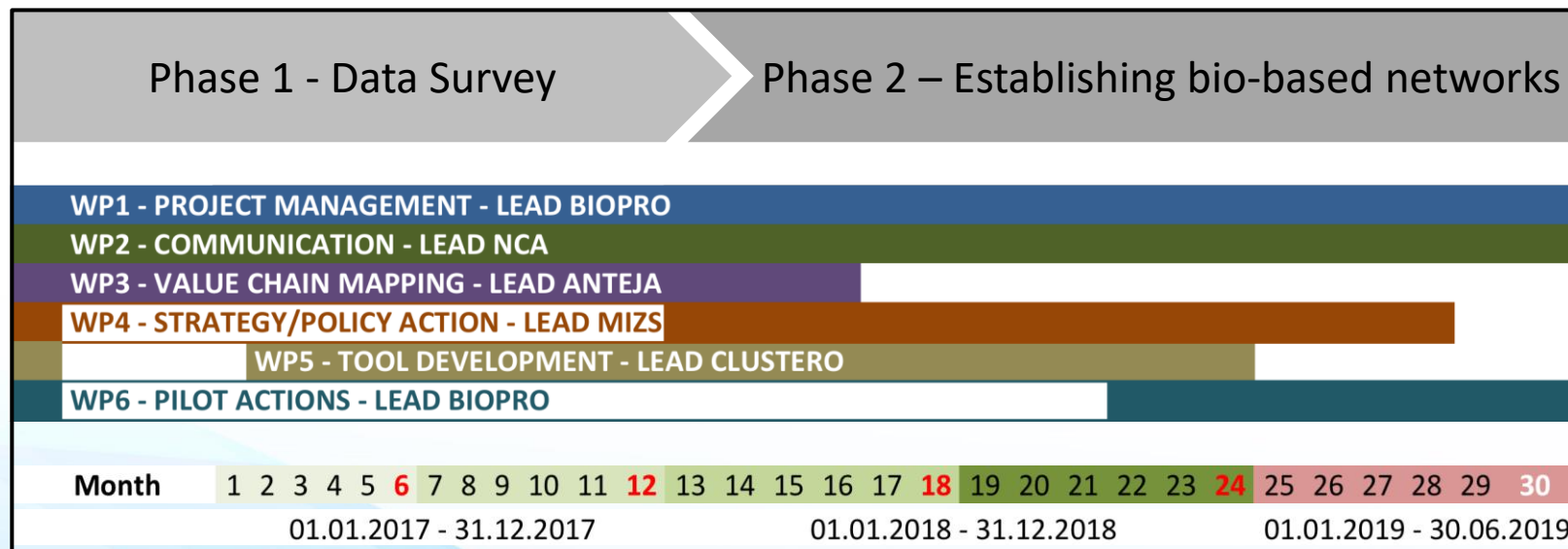
Project co-funded by European Union funds (ERDF, IPA)



DanuBioValNet

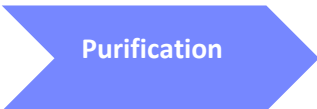
Foster the development of new regional bio-economy based value chained based on transnational cluster cooperation

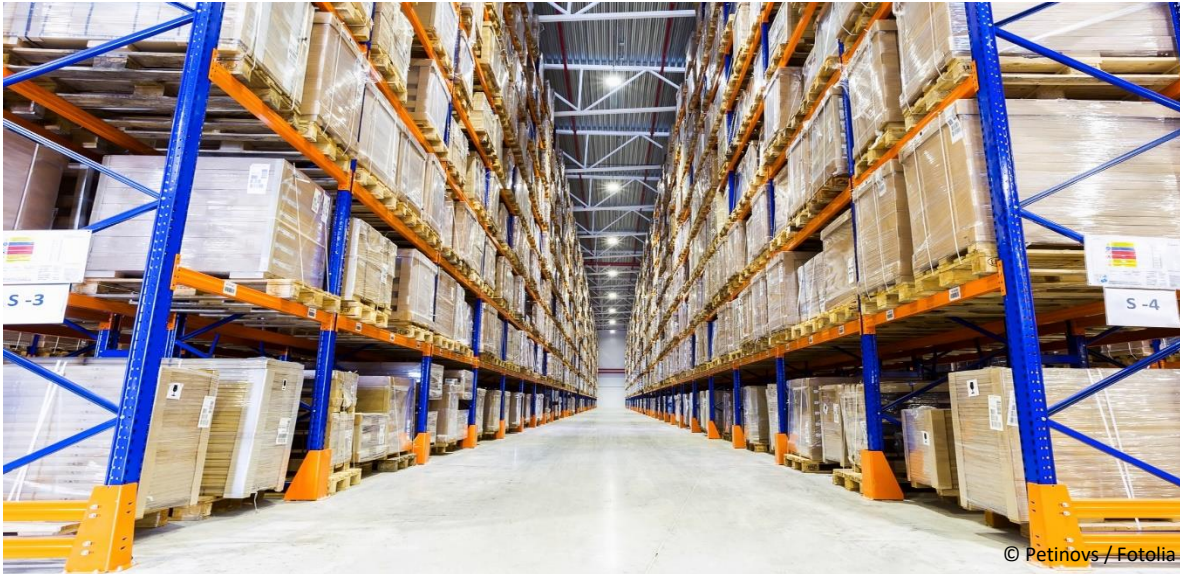
Project co-funded by European Union funds (ERDF, IPA)



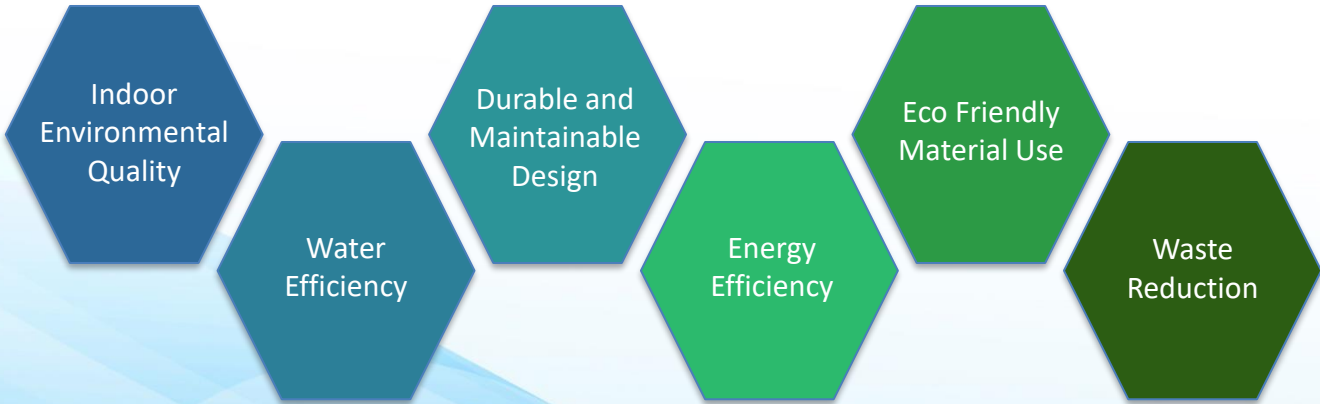
Project co-funded by European Union funds (ERDF, IPA)

Example for a marketable added value chain: **BIOPLASTIC**

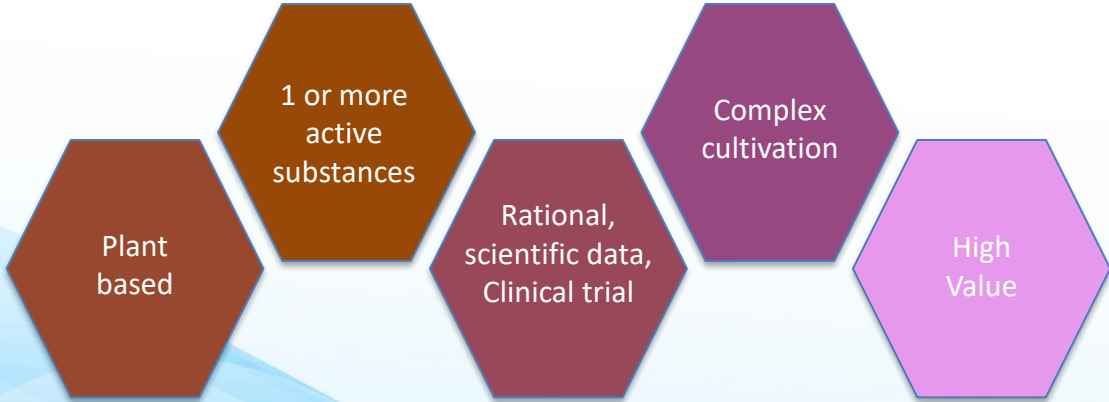




Project co-funded by European Union funds (ERDF, IPA)



Project co-funded by European Union funds (ERDF, IPA)



Project co-funded by European Union funds (ERDF, IPA)



**Cluster Tool Box
„New Cluster Services
to support SMEs in
bio-based industries”**

Project co-funded by European Union funds (ERDF, IPA).

A collection of cluster based good practice examples in:

- Innovation
- Internal Networking
- External Networking
- Business Support
- Entrepreneurship
- Policy Support

Project co-funded by European Union funds (ERDF, IPA)



- DTP DanubePeerChains
- DTP GoDanuBio
- Horizon 2020 BeRural
- Enterprise Europe Network

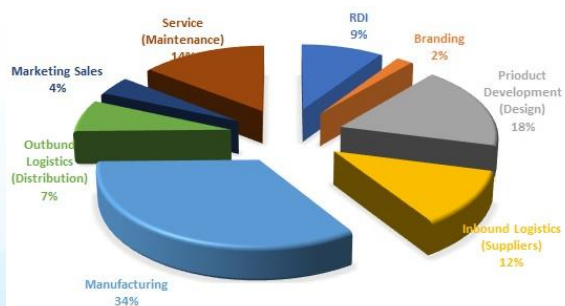


DTP DANUBEPEERCHAINS

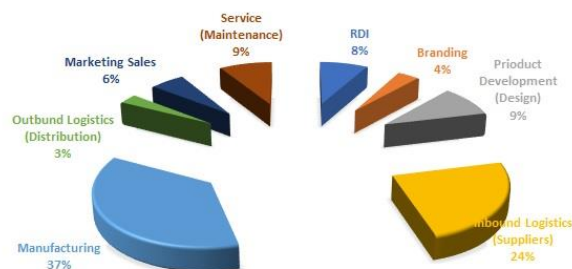
INTEGRATED CAPACITY BUILDING AND TRAINING PROGRAMME FOR DANUBE AREA LABOUR AND BUSINESS SUPPORT ORGANISATIONS, LOCAL INDUSTRY AND ENTREPRENEURS TO ENTER INNOVATIVE TRANSNATIONAL VALUE CHAINS AS PEER-LEVEL COLLABORATION PARTNER

- Mapping of Regional Value Chains

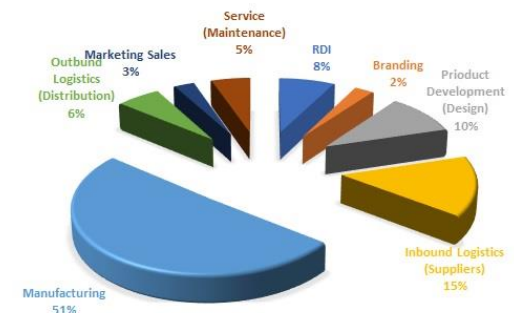
DISTRIBUTION OF COMPANIES IN THE MECHATRONICS VALUE CHAIN



DISTRIBUTION OF COMPANIES IN THE MECHANICAL ENGINEERING VALUE CHAIN



DISTRIBUTION OF COMPANIES IN THE WOOD VALUE CHAIN



GODANUBIO

PARTICIPATIVE ECOSYSTEMS FOR FOSTERING THE REVITALIZATION OF RURAL-URBAN COOPERATION THROUGH GOVERNING DANUBE CIRCULAR BIOECONOMY

- **Good Practice Brochure**

	AT (OO)	BW	BG	HR	CZ	HU	RO	RS	SK	SI
Industry										
Chambers of commerce	commerce, agriculture		wood industry	agriculture & economy engineers, architects		Business Council for Sustainable Development, Chamber for Agriculture		Chamber of Serbia, for Agriculture and Food	Chamber of Agriculture and Food	
cluster organisations	food, cleantech, wood	Cluster Agency energy, environment, pharma		wood, intelligence	NCA	pellets, hemp, wood, agriculture	green energy, wood, agrifood	agro, energy	plastics, hemp	
enterprises	yes		ENT Hub, Employer's Association, Export Hub, Recycling Meat Producer's	Yes	Yes		Yes			Yes
professional associations Academia & Research		Farmers		Biomass	biomass, heavy cities, technology platform	Quality Compost	Packaging & SPS		wood processing, biofuels	
university	applied sciences	applied sciences, general	general, food technology	Agriculture, Forestry, Civil Engineering, Textiles	general life sciences, Chemistry, Agriculture	University for Agriculture	general, technical for agriculture	Technical Agriculture	Agriculture, Technology, General, veterinary	for Biosystems, General, Chemistry
research institutes	ecology	Federal, regional, private, Fraunhofer		Forest, Energy	chemistry, veterinary	Ecology	Chemistry, Biology	Food, Biomass	Academy of Sciences, Paper	
competence centers Public		climate								
State Agencies	Planning	Economic Entrepreneurship, Wine, Forest, bioeconomy	Agriculture Fund	Agency for Agriculture, Agency for SMEs, Efficiency Fund		Foundation for SMEs	Innovation Agency			
Local Government		sigmarinon	Association of Municipalities	Association of Cities, Association of Counties			Association of Communities			
Regional/central government		Ministry for Rural Environment	Ministry for Agriculture, Environment, Science	Ministry for Agriculture, Construction, Economy, Science	Ministry for Agriculture, Environment, Development, Industry, South Schemisia	Ministry for Agriculture, Innovation and Technology	Ministry for Environment, Agriculture, Development, Economy	Energy, Construction, Transport	Ministry for Agriculture, Environment, Economy, Science, Self-Governance Region	
Regional Development Agencies Society						the RDAs		environment, scouting	Young farmers	
NGOs		yes		yes		Youth				

• Good Practice Brochure

	AT (OO)	BW	BG	HR	CZ	HU	RO	RS	SK	SI
Industry										
Chambers of commerce	commerce, agriculture		wood industry	agriculture, economy, engineering, architecture		Business Council for Sustainable Development, Chamber for Agriculture		Chamber of Serbia, Chamber for Agriculture and Food		
clusters	food, cleantech, wood			wood, intelligence		pellets, hemp, wood, agriculture	green energy, wood, agrifood	agro, energy	plastics, hemp	
cluster organisations		Cluster Agency, energy, environment, pharma			NCA		CLUSTER O			
enterprises	yes			Yes	yes		Yes			Yes
professional associations			ETT Hub, Employer's Association, Export Hub, Resisting Meat Producer's							
Academia & Research		Farmers		Biomass	biomass, heavy cities, technology	Quality Platform	Packaging & SMEs		wood processing, biofuels	
university	applied sciences	applied sciences, general	general, food technology	Agriculture, Forestry, Civil Engineering, Textiles	general life sciences, Chemistry, Agriculture	University for Agriculture	general, technical, agriculture	Technical Agriculture	Agriculture, Technology, General, veterinary	for Biosystems, General, Chemistry
research institutes	ecology	Federal, regional, private, Fraunhofer		Forest, Energy		chemistry, veterinary	Economic Forecasting, Chemistry, Biology	Food, Bioscience	Academy of Sciences, Paper	
competence centers		biotechnology, climate								
Public										
State Agencies	Planning	Economic Entrepreneurship, Wine, Forest, biotechnology	Agriculture Fund	Agency for Agriculture, Agency for SMEs, Energy Efficiency Fund		Foundation for SMEs	Innovation Agency			
Local Government		Association of Municipalities		Association of Cities, Association of Counties			Association of Communities			
Regional/central government		Ministry for Rural Development, Environment	Ministry for Agriculture, Environment, Science	Ministry for Agriculture, Construction, Economy, Science	Ministry for Agriculture, Environment, Development, Industry	Ministry for Agriculture, Innovation and Technology	Ministry for Environment, Development, Economy	Energy, Construction, Transport	Ministry for Agriculture, Environment, Economy, Science, Self-Government, Region	
Regional Development Agencies						the 8 RDAs				
Society								environment, scouting	Young farmers	
NGOs		yes		yes		Youth				

Project co-funded by European Union funds (ERDF, IPA)

HORIZON 2020 BE RURAL

BIOECONOMY GOING RURAL: DEVELOPING RURAL BIOECONOMIES BY FOCUSING ON REGIONAL STRENGTH

BE-RURAL.EU

- Selected Regions from Latvia, Poland, Northern Macedonia, Bulgaria and Romania
- Good Practice Brochure

ENTERPRISE EUROPE NETWORK LARGEST GLOBAL NETWORK IN SUPPORT OF SME TRANSNATIONAL COOPERATION

- TG Clusters
- Good Practice Brochure
- EU Open for Business Campaign




Comisia Europeană

Simți nevoia să îți extinzi afacerea?

Sara Wechsler, CEO, Romanian Textile Concept

Deschide drumul către Europa obținând acces la finanțarea de care ai nevoie.

Sara a simțit că era timpul ca afacerea ei să se dezvolte pe măsura ambițiilor sale. Așa că a contactat Rețeaua Enterprise Europe pentru a afla toate oportunitățile oferite de grădinișcă. Rețeaua Enterprise Europe a ajutat-o să identifice sursele cele mai potrivite de capital, impozitului sau subvențiilor care să contacească la creșterea companiei.

De ce să nu faci la fel? Puterile de a-ți dezvoltat afacerea îți este acum la îndemână.

ARă cum te poate ajuta Rețeaua Enterprise Europe la enr-romania.ro

THANK YOU FOR YOUR ATTENTION

Daniel Cosnita
Romanian Cluster Association
www.clustero.eu



Project co-funded by European Union funds (ERDF, IPA)