



Carpathian protected areas in Romania

Mircea Vergheteș

Piatra Craiului National Park

Romanian National Forest Administration

Protected Areas – Cornerstones of Ecological Connectivity in the Carpathians and Beyond
International Conference, Visegrád, Hungary, 28-30 September 2021 - Project co-funded by European Union Funds (ERDF, IPA)

PAs management history

- Until 1990 - no administrations, forest management plans, designated nature reserves
- Ministerial order 1990 - 13 national parks
- Now - 13 national parks, 16 nature parks, Danube Delta
- GEF project - Danube Delta
- GEF project - park models in the Carpathians - 3 sites, administrations, management plans, monitoring, public awareness, community outreach, infrastructure, first Protected Areas Law in 2000
- 2004 - 17 administrations
- Present - DDBRA + 24 administrations (22 NFA and 2 County Councils) - 24 are members in our Association
- Custodians - NGO's - not anymore
- National Agency for Nature Protected Areas - created in 2017, central and county structures
- In the Carpathians - 21 major PAs (parks)

PA system category

National categories

- I Scientific reserves
- II National Parks (13)-12 CNPA
- III Nature monuments
- IV Nature reserves
- V Nature parks (16) 10 CNPA

PA system

Natural Heritage Sites (1+1)
(24000 ha beech primeval forest)

Ramsar Sites 20 (3 in Crp.)

Geoparks - 1 and (1+2)

Biosphere reserves (1+2)

International categories

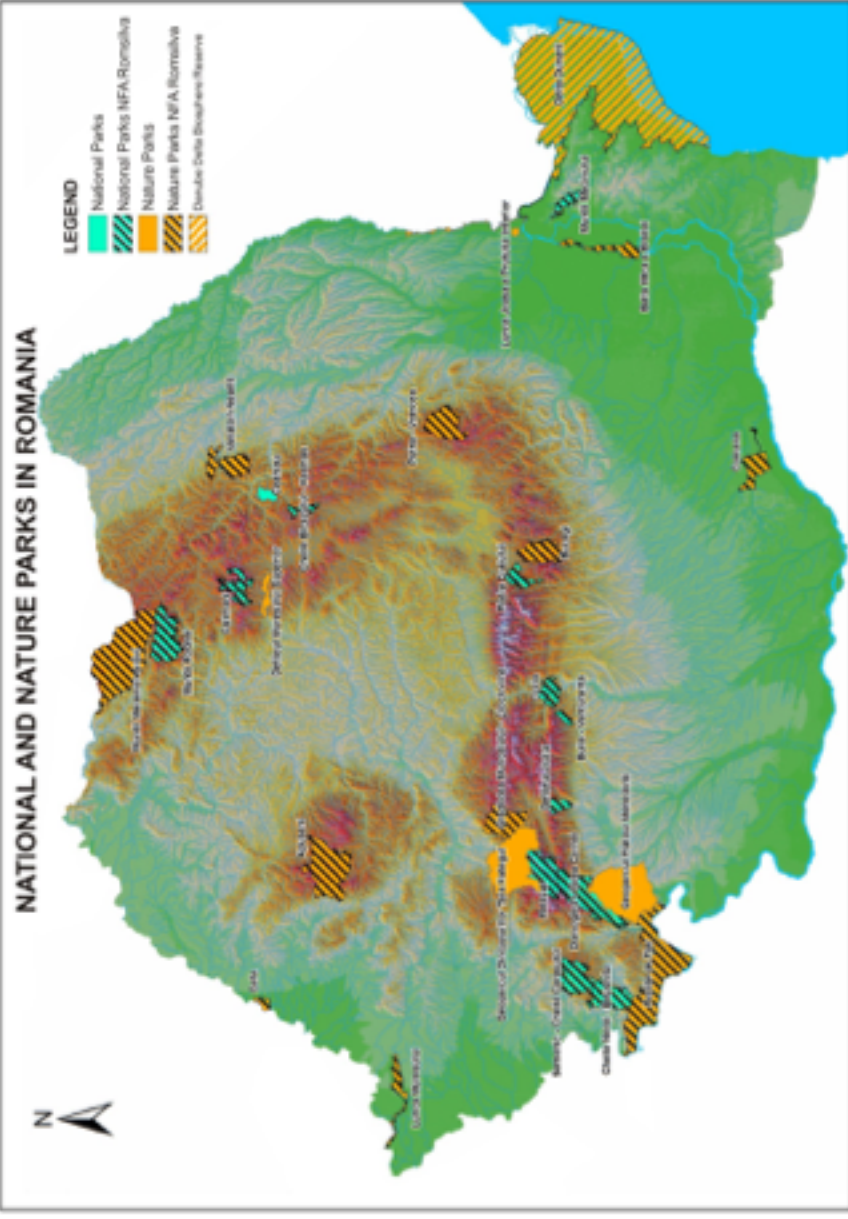
The country territory SCIs and SPAs

**PAs category
system**

European categories

**Natura 2000
Covering 23% of the
country territory**

Protected Areas – Cornerstones of Ecological Connectivity in the Carpathians and Beyond
International Conference, Visegrád, Hungary, 28-30 September 2021 - Project co-funded by European Union Funds (ERDF, IPA)



National PAs - 7.5%

National parks - 1.33%

Around 240,000 ha of forest
in no harvesting zones in PAs

Core areas of parks, DDBR
and nature reserves

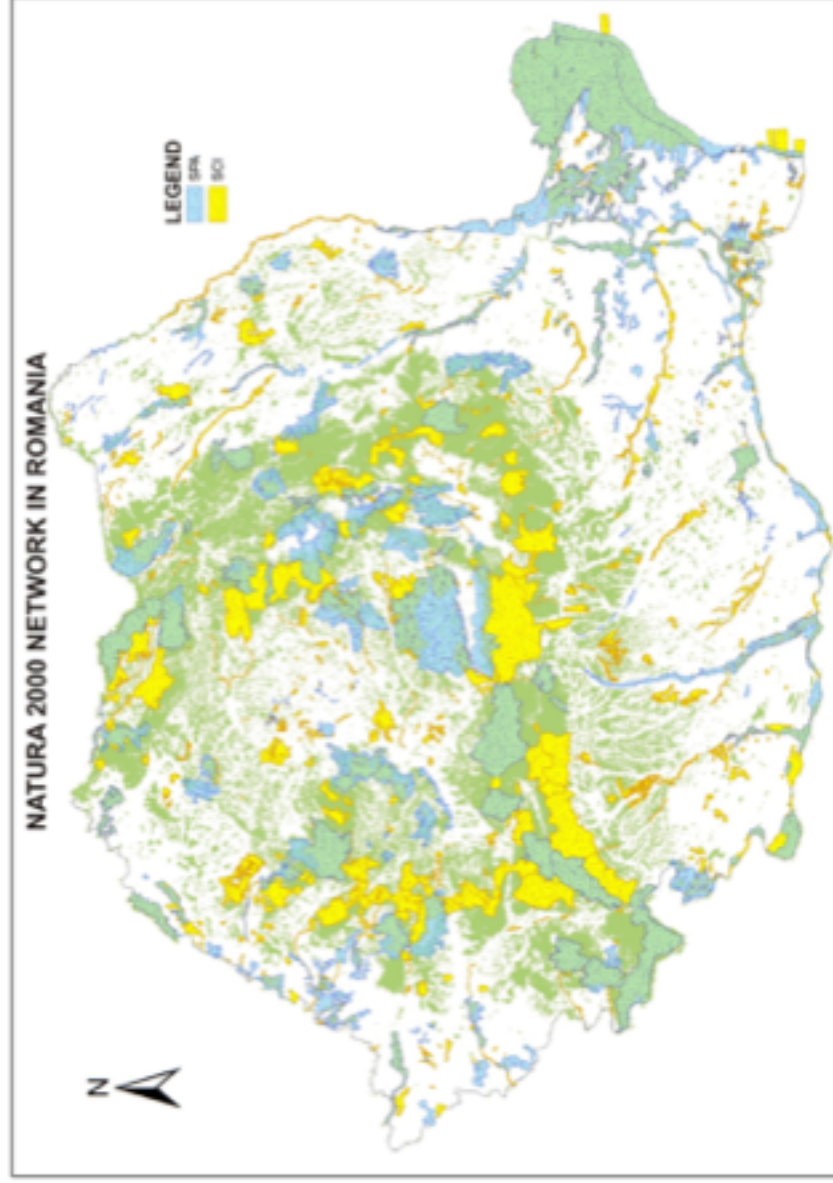
Administration

- Management authority
- Scientific council - approves the management plan and all the activities with potential impact on the PA, including forest management plans, internal zoning
- Consultative council
- Councils approved through MoE Order

Administration

- Legislation - PAs approval
- Forest management plans
- Any other activity with potential impact on the environment
- Part of the environment evaluation and approval
- PAs management plans - ministerial order with negotiations with the interested ministries
- No hunting in national parks

NATURA 2000 NETWORK IN ROMANIA



Almost all national
PAs are overlapping with
totally or partially with
the N2000 sites

Protected Areas – Cornerstones of Ecological Connectivity in the Carpathians and Beyond

International Conference, Visegrád, Hungary, 28-30 September 2021 - Project co-funded by European Union Funds (ERDF, IPA)

SCI AREA

SITE CODE	SITE NAME	SA
ROSC0320	Clisna-Dabova	2077
ROSC0321	Moldova-Saprosu	426
ROSC0326	Codlu-secului-de-la-Sotiroasa-Bistrita	2487
ROSC0322	Muntii-Ny	22752
ROSC0321	Deal-Tigheanu-Angelul-Naiv	12206
ROSC0326	Seregha	2154



NUMERUL	DATELE DE BAZA	NUMERUL DE STAT
R05000120	Munajul Mădăraşului	14303
R05000118	Munajul Ocnişoarei	11968
R05000214	Blajul Târ	4796
R05000208	Târşia	454
R05000209	Sârca	8302
R05000116	Preşelina	11282
R05000207	Dealurile Târnavei Mici - Băileş	11282
R05000119	Căminul - Gârşia	4228
R05000110	Lăurea	107148
R05000114	Putna Craiova	1389
R05000115	Putna Craiova	3094

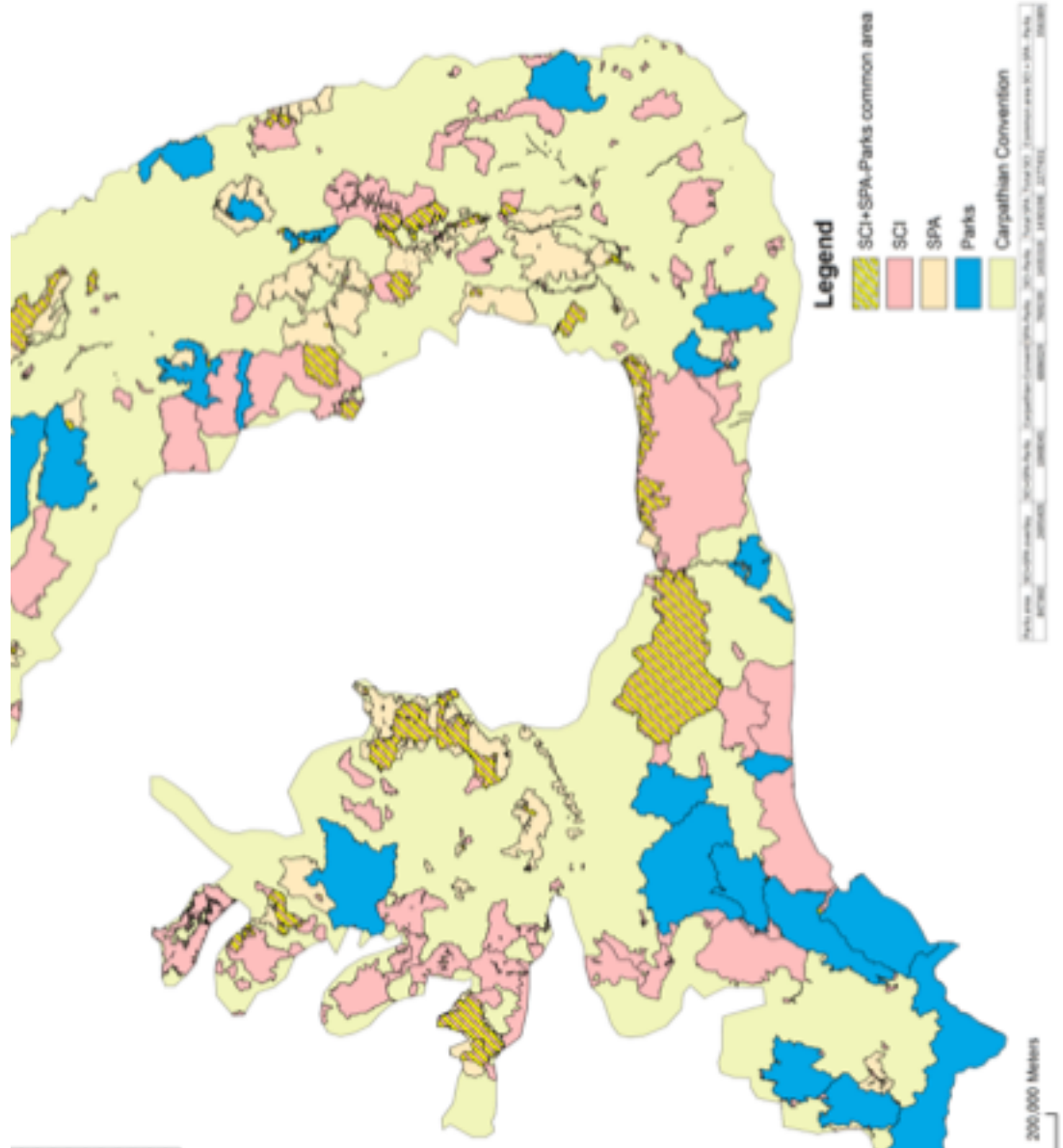
SPA-AREA

SITECODUL	SITUL NUME	HA
R05000019	Ochiul Bătrânilor - Năvod	1170
R05000020	Ochiul Năvodului	2862
R05000028	Carul Doului - Băileş	66
R05000032	Dealurile Târnavei Mici - Băileş	2772
R05000033	Dealurile Târnavei Mici - Băileş	9782
R05000034	Dealurile Târnavei Mici - Băileş	97144
R05000035	Dealurile Târnavei Mici - Băileş	1184
R05000042	Frâncu	12080
R05000043	Grădina Mădăraşului - Căminul	117
R05000044	Lunca Ieromartirilor - Târnavei	4799
R05000045	Munajul Aponei - Vădăraş	3606
R05000046	Munajul Băicului - Băileş	3606
R05000047	Munajul Băicului	226
R05000048	Munajul Băicului	7135
R05000049	Munajul Băicului	716
R05000050	Munajul Băicului - Ochiul Bătrânilor	3245
R05000051	Ochiul Bătrânilor	6208
R05000052	Dealurile Căminului - Băileş	10087
R05000053	Băileş - Zărnă	36276
R05000054	Lăurea - Zărnă	482
R05000055	Munajul Craiova	28106
R05000056	Munajul Craiova	112

Parks - 0.85 mil ha
SCI - 2.28 mil ha
SPA - 1.42 mil ha

Scope CC in RO - 6.89 mil ha

PAs - 2.70 mil ha - 39%



Management

- Contracts with the MoE and NANPA
- Structures - legal person - 20 administrations - 360 employees
- Annual budget - 6.5 mil euro - approved through a ministerial order
- Average - 10% from own income
- Since 2004 - 70 projects with approx. 80 mil euro - management plans, monitoring, visitor infrastructure, capacity development
- NANPA - 490 staff, 6.5 mil euro - state budget, projects
- 3 PAs European Diploma Council of Europe - 2 from the Carpathian

Protected Areas – Cornerstones of Ecological Connectivity in the Carpathians and Beyond

International Conference, Visegrád, Hungary, 28-30 September 2021 - Project co-funded by European Union Funds (ERDF, IPA)



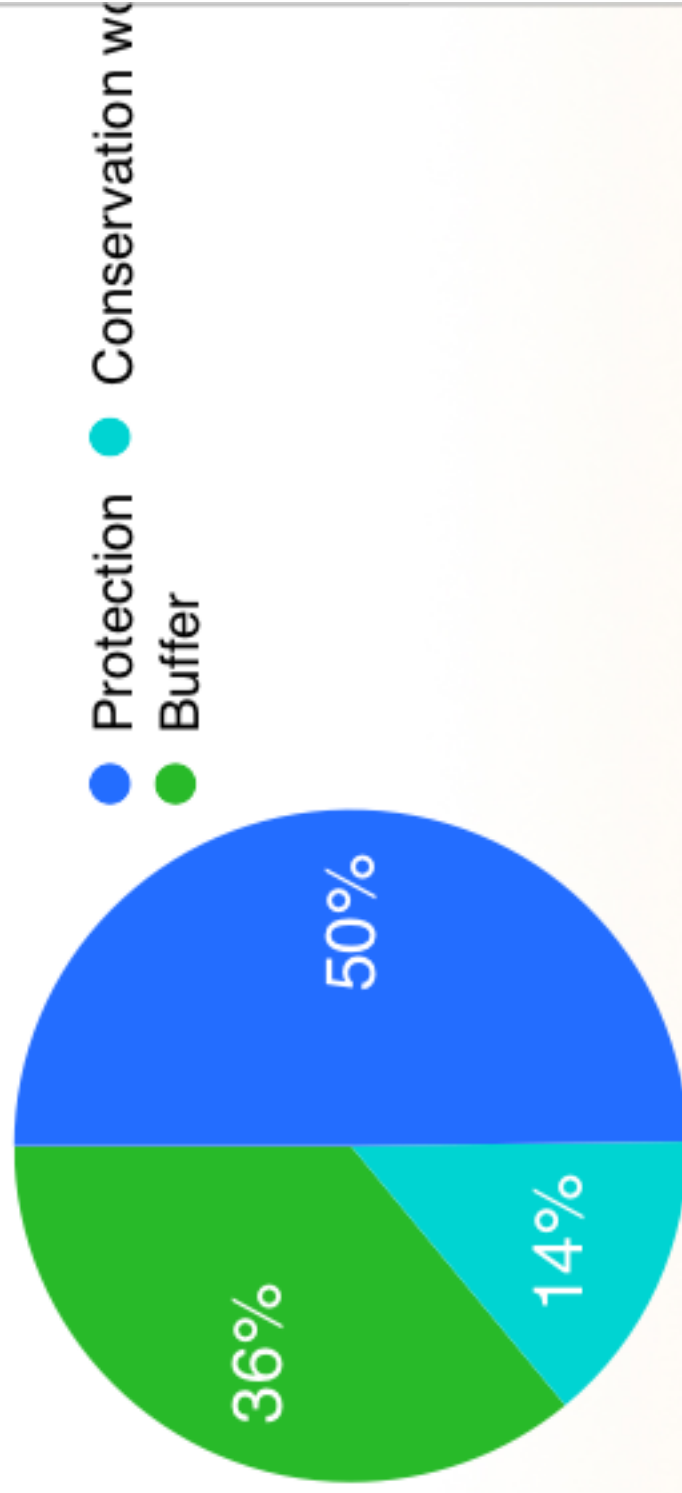
Forest zonation in nature parks (10 NFA) -total forest area - 331 th ha



Protected Areas – Cornerstones of Ecological Connectivity in the Carpathians and Beyond
International Conference, Visegrád, Hungary, 28-30 September 2021 - Project co-funded by European Union Funds (ERDF, IPA)



Forest zonation in national parks-
total forest area-239 ths ha



Protected Areas – Cornerstones of Ecological Connectivity in the Carpathians and Beyond

International Conference, Visegrád, Hungary, 28-30 September 2021 - Project co-funded by European Union Funds (ERDF, IPA)

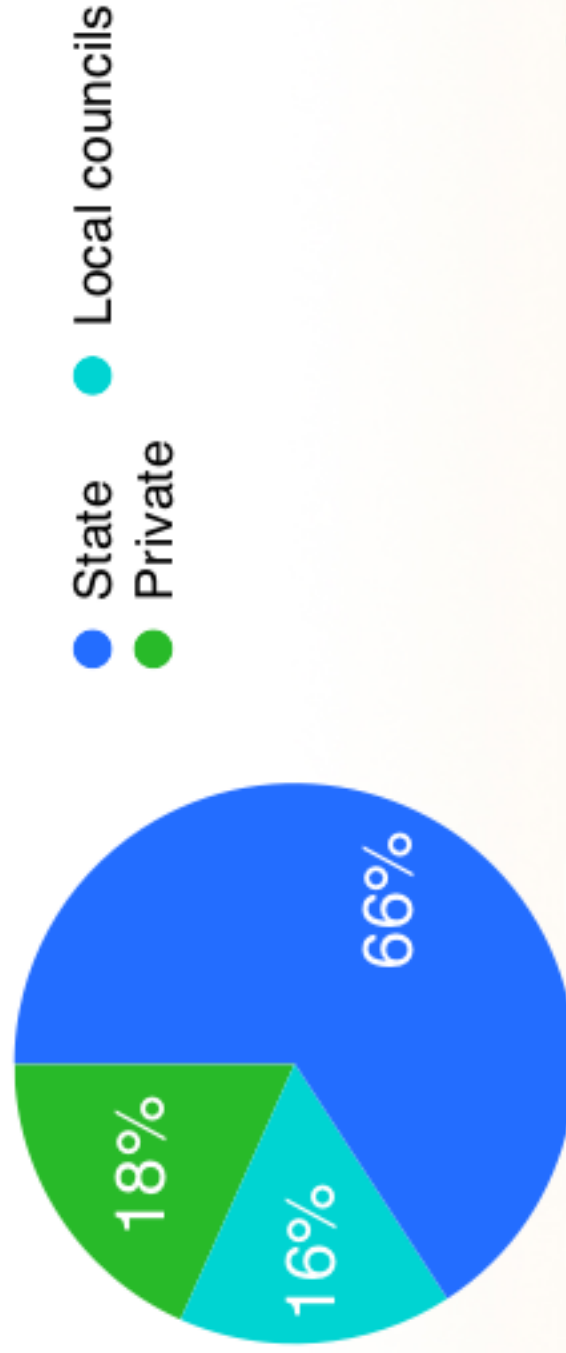


Interreg

Danube Transnational Programme
ConnectGREEN



Forest ownership in national parks-239 th ha



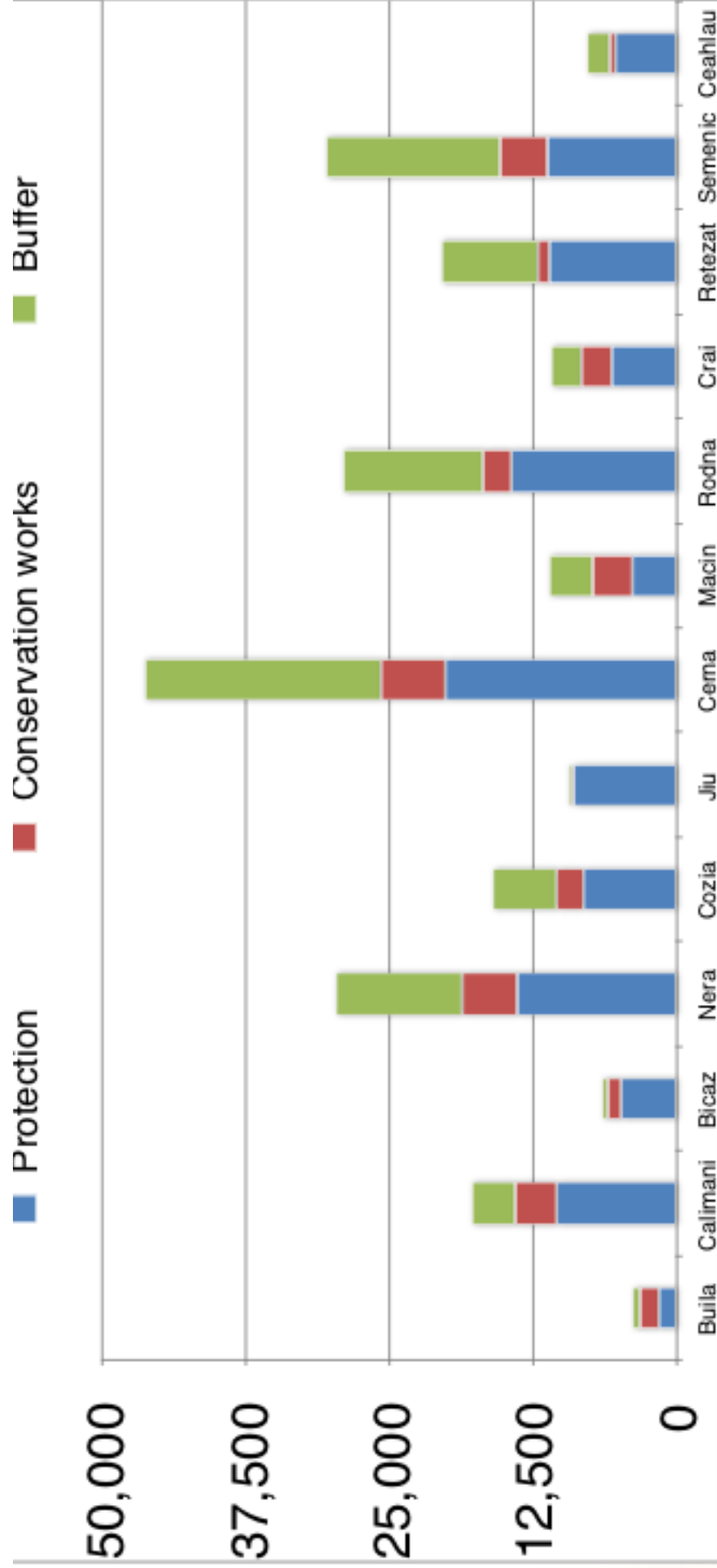
Protected Areas – Cornerstones of Ecological Connectivity in the Carpathians and Beyond

International Conference, Visegrád, Hungary, 28-30 September 2021 - Project co-funded by European Union Funds (ERDF, IPA)



Danube Transnational Programme
ConnectGREEN

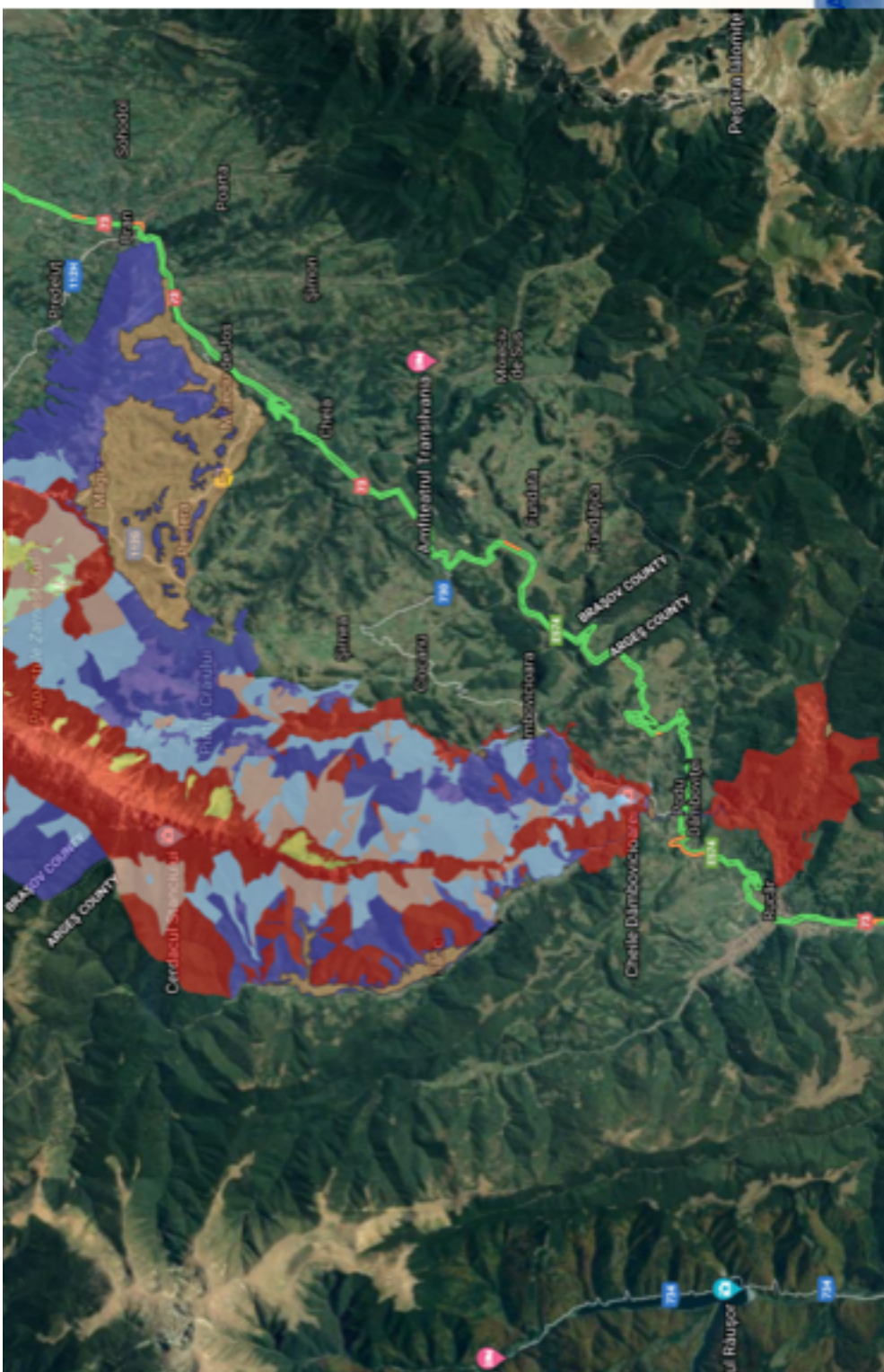




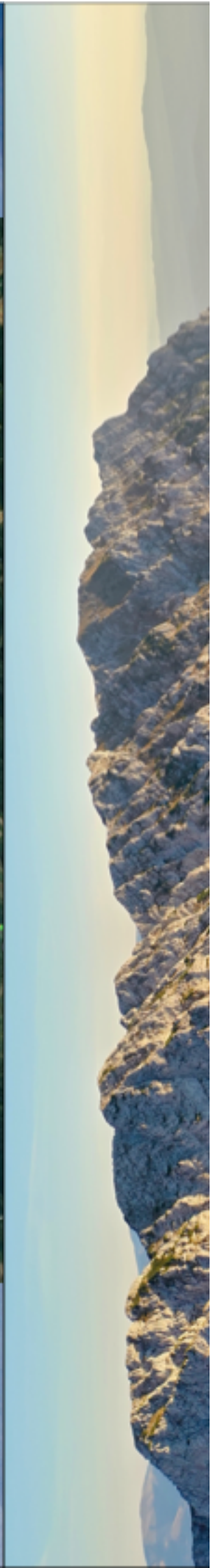
Protected Areas – Cornerstones of Ecological Connectivity in the Carpathians and Beyond

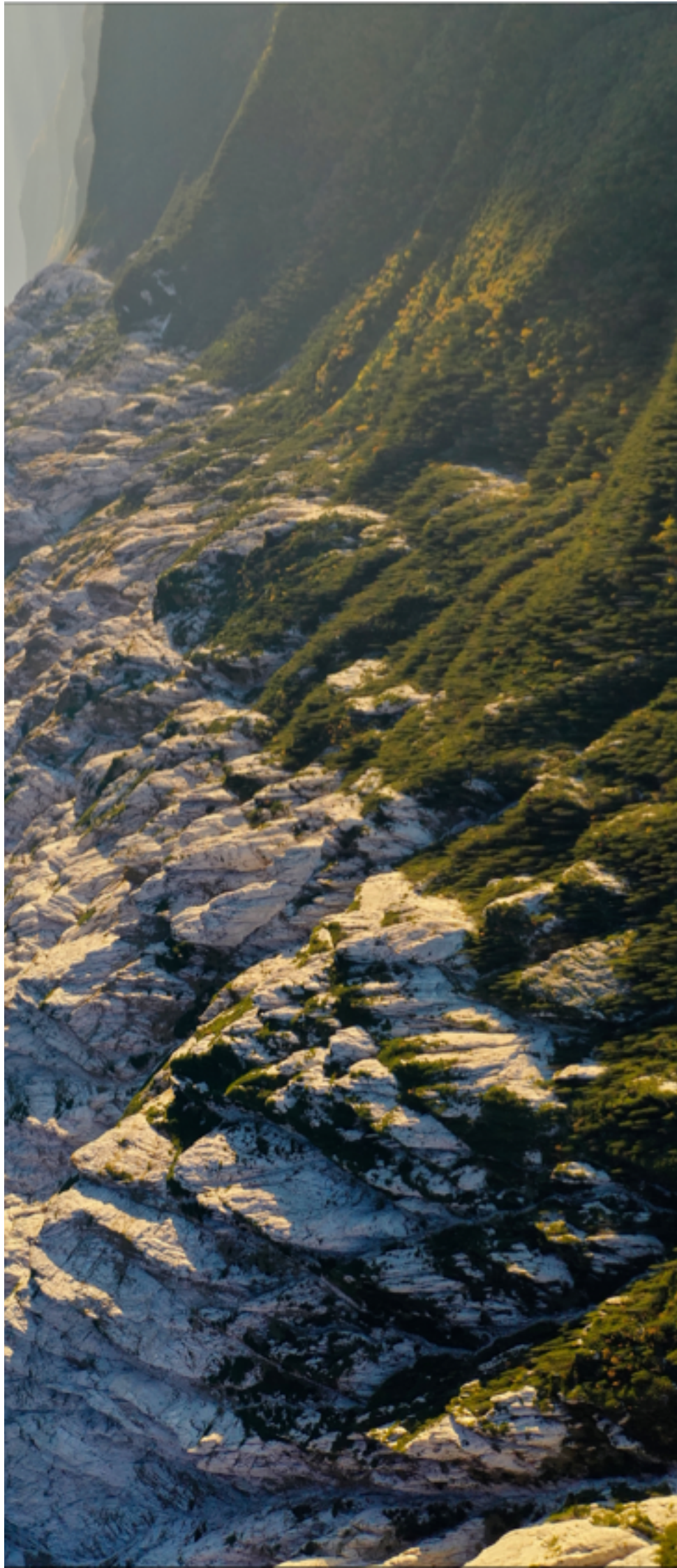
International Conference, Visegrád, Hungary, 28-30 September 2021 - Project co-funded by European Union Funds (ERDF, IPA)





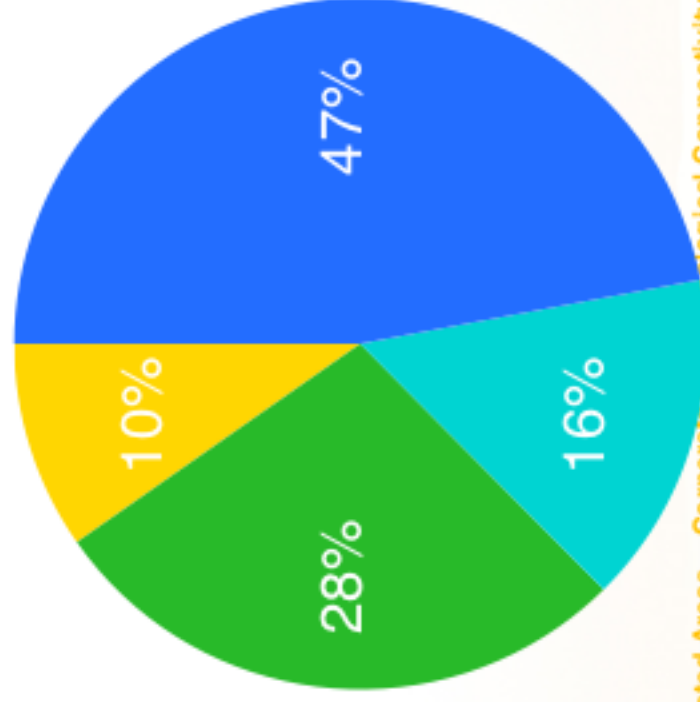
Internatio





Piatra Craiului NP

zoning 14.7 ths ha



- Protection
- Buffer
- Conservation works
- Development areas

Protected Areas – Cornerstones of Ecological Connectivity in the Carpathians and Beyond

International Conference, Visegrád, Hungary, 28-30 September 2021 - Project co-funded by European Union Funds (ERDF, IPA)

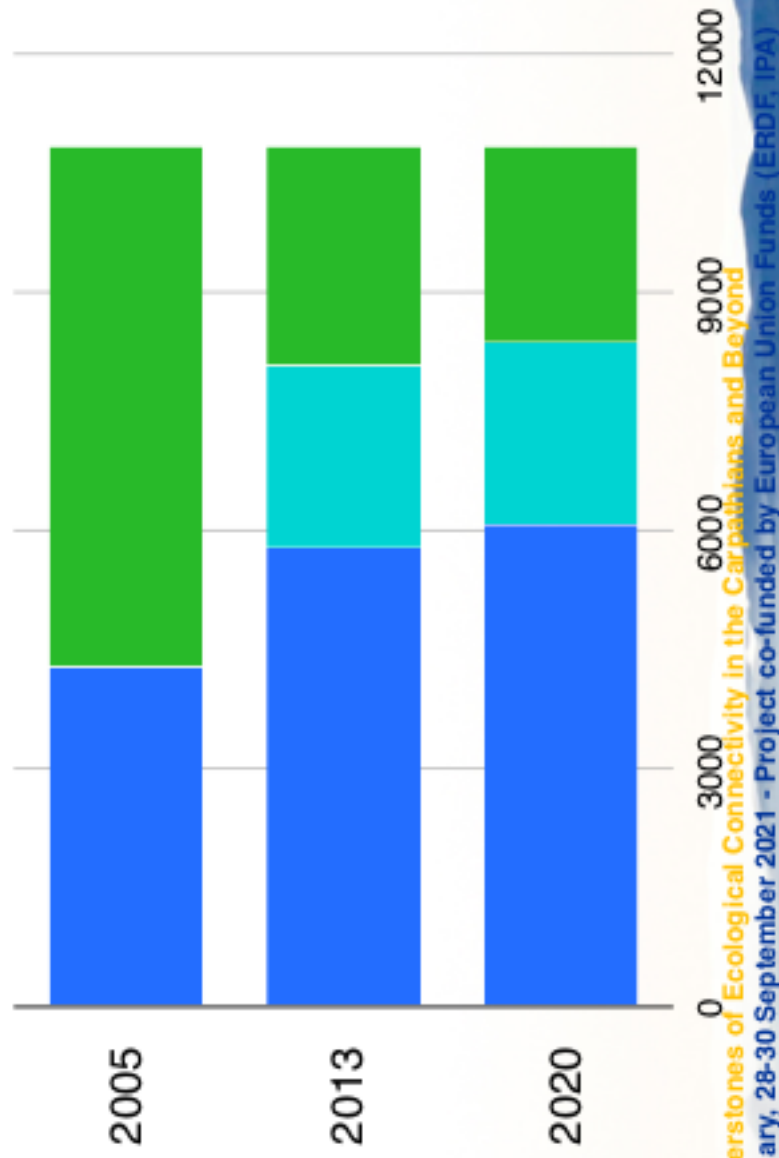


■ Protection

■ Conservation works

■ Buffer

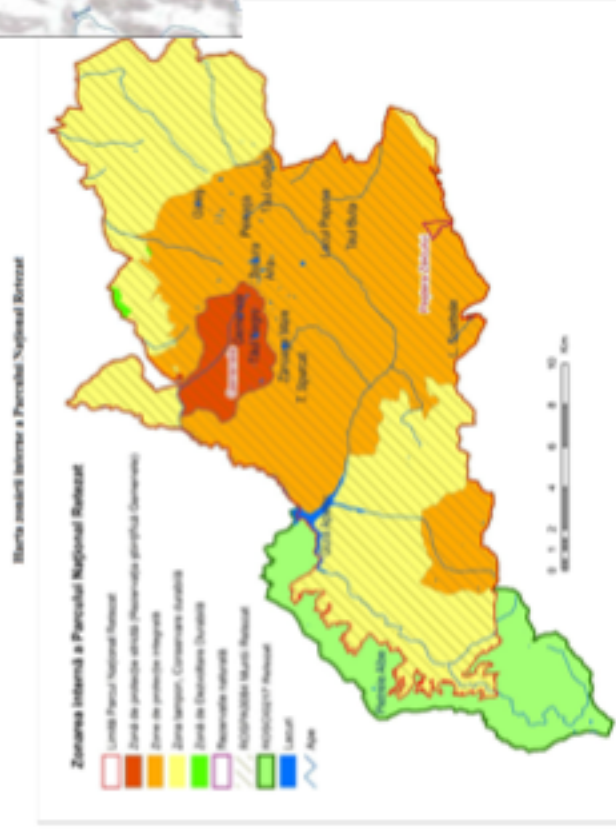
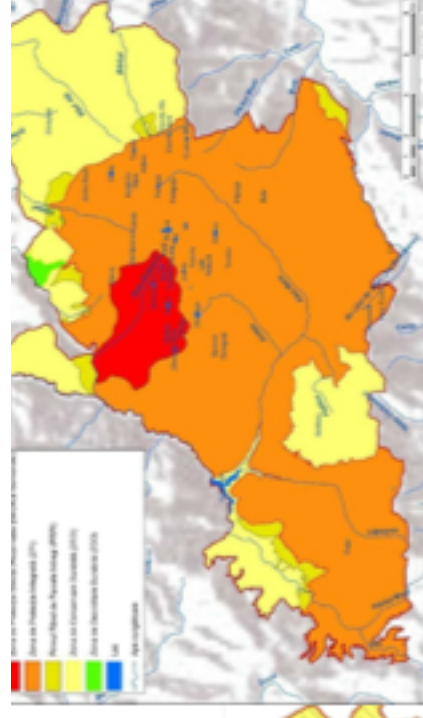
Forest internal zoning in 3 successive management plans in Piatra Craiului NP



Protected Areas – Cornerstones of Ecological Connectivity in the Carpathians and Beyond
 International Conference, Visegrád, Hungary, 28-30 September 2021 - Project co-funded by European Union Funds (ERDF, IPA)



Internal zoning in
2 successive
management
plans in Retezat
NP
81% non-
intervention zone

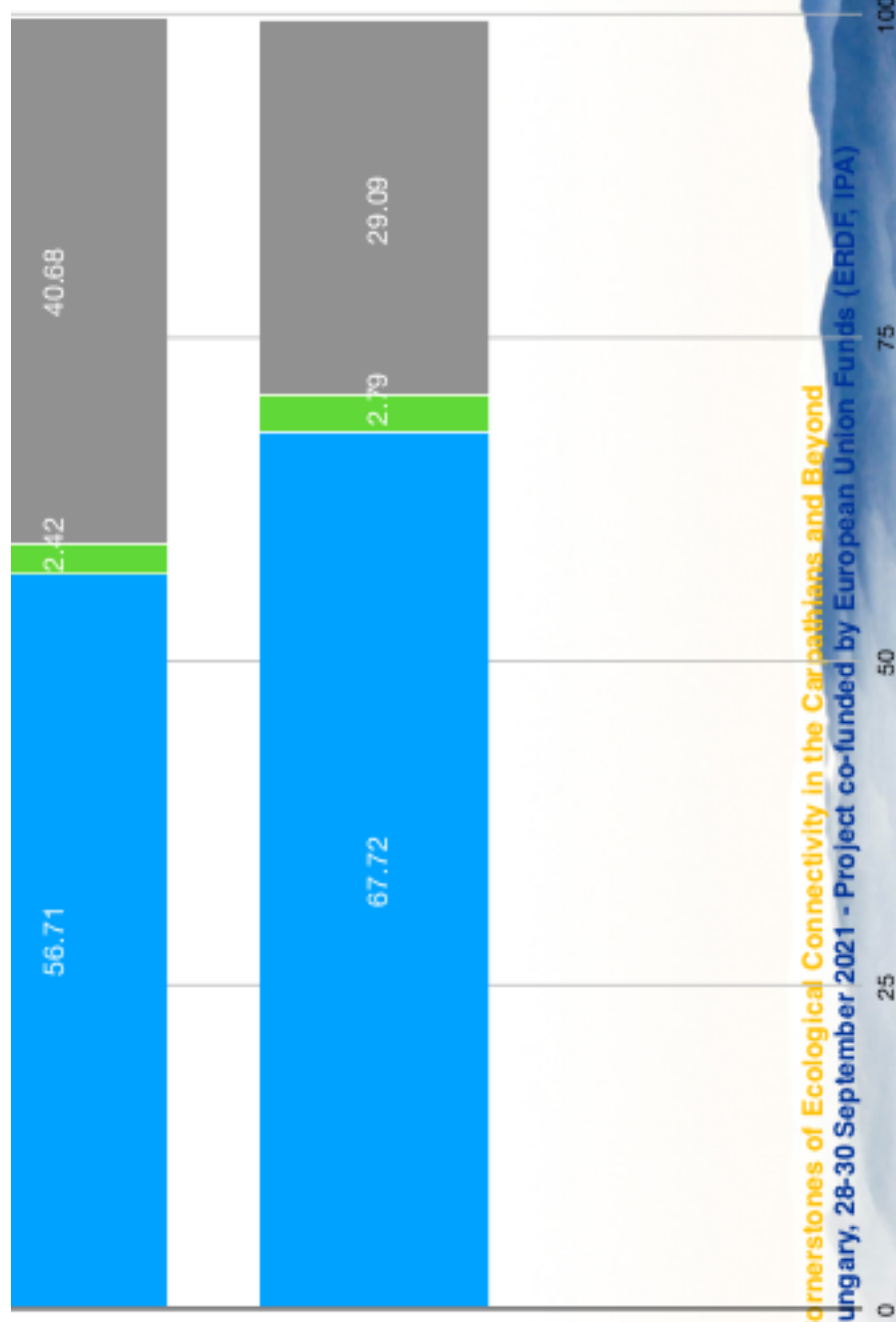


Protected Areas – Cornerstones of Ecological Connectivity in the Carpathians and Beyond

International Conference, Visegrád, Hungary, 28-30 September 2021 - Project co-funded by European Union Funds (ERDF, IPA)



Internal zoning in
2 successive
management
plans in Retezat
NP
81% non-
intervention zone



Protected Areas – Cornerstones of Ecological Connectivity in the Carpathians and Beyond

International Conference, Visegrád, Hungary, 28-30 September 2021 - Project co-funded by European Union Funds (ERDF, IPA)



- National parks internal zoning - 75% aim - through a national level decision
- Analyses of internal zoning including tourist interests and visible landscape impact

- Strong commitment for compensations for owners
- Improvement of harvesting technologies - skyline, forwarders instead of skidding where possible
- Non forest land management - mountain hay meadows vs pastures - incentive subsidies for hay meadows
- Land use planning tendencies - increase of construction designated areas, even when there is a population decrease
- Preserving local architecture style - for nature parks - no incentives
- Climate change - review of guidelines for forest regeneration, areas with spruce - bark beetle
- New developments on various directions - “green” energy, transport, tourism, ski areas, off roaders
- Underdeveloped network - ecological corridors missing