

WACOM

Pregled sistema za izmenjavo informacij in usklajevanje udeležencev v izrednih razmerah (Sistem vodenja odziva - ICS) s posebnim poudarkom na elementih: 207 (Organizacijska struktura incidentov), 209 (Povzetek stanja incidenta) in IAP (Načrt odziva na dogodek)

WACOM national workshop Slovenija

May 27th, 2021

History of the ICS:

The ICS concept was formed in 1968 at a meeting of Fire Chiefs in Southern California. The program was built primarily to take after the management hierarchy of the US Navy and it was mainly for fire fighting of wildfires in California. During the 1970s, ICS was fully developed during massive wildfire suppression efforts in California (FIRESCOPE) that followed a series of catastrophic wildfires, starting with the massive Laguna fire in 1970. Property damage ran into the millions, and many people died or were injured. **Studies determined that response problems often related to communication and management deficiencies rather than lack of resources or failure of tactic.**

155 ICS Key definitions/terminology 1/2:



Action Plan:	Check-In:	Dispatch:	Hazard:
Agency:	Chief:	Dispatch Center:	Helibase:
Agency Administrator or Executive:	Clear Text:	Division:	Helispot:
Agency Dispatch:	Command:	Documentation Unit:	Hierarchy of Command:
Agency Representative:	Command Post:	Emergency:	Incident:
Air Operations Branch Director:	Command Staff:	Emergency Management Coordinator/Director:	Incident Action Plan (IAP):
Allocated Resources:	Communications Unit:	Emergency Operations Centers (EOCs):	Incident Base:
All-Risk:	Compacts:	Emergency Operations Plan (EOP):	Incident Commander (IC):
Area Command (Unified Area Command):	Compensation/Claims Unit:	Emergency Operations Plan (EOP):	Incident Command Post (ICP):
Assigned Resources:	Complex:	Event:	Incident Command System (ICS):
Assignments:	Cooperating Agency:	Facilities Unit:	Incident Communications Center:
Assistant:	Coordination:	Federal:	Incident Complex:
Assisting Agency:	Coordination Center:	Field Operations Guide:	Incident Management Team (IMT):
Available Resources:	Cost Sharing Agreements:	Finance/Administration Section:	Incident Objectives:
Base:	Cost Unit:	Food Unit:	Incident Types:
Branch:	Crew:	Function:	Incident Support Organization:
Cache:	Delegation of Authority:	General Staff:	Initial Action:
Camp:	Demobilization Unit:	Ground Support Unit:	Initial Response:
Chain of Command:	Deputy:	Group:	Intelligence Officer:
	Director:		

155 ICS Key definitions/terminology 2/2:

Joint Information Center (JIC):	Multiagency Coordination (MAC):	Recorders:	Strategic:
Joint Information System (JIS):	Multiagency Coordination Systems (MACS):	Reinforced Response:	Strike Team:
Jurisdiction:	Multiagency Incident:	Reporting Locations:	Supervisor:
Jurisdictional Agency:	Mutual-Aid Agreement:	Resources:	Supply Unit:
Kinds of Resources:	National Incident Management System (NIMS):	Recovery:	Support Branch:
Landing Zone:	Officer:	Resource Management:	Supporting Materials:
Leader:	Operational Period:	Resources Unit:	Support Resources:
Liaison:	Operations Section:	Response:	Tactical Direction:
Liaison Officer (LNO):	Out-of-Service Resources:	Safety Officer:	Tactics:
Logistics:	Planning Meeting:	Section:	Task Force:
Logistics Section:	Planning Section:	Segment:	Team:
Local Government:	Preparedness:	Service Branch:	Technical Specialists:
Major Disaster:	Preparedness Organizations:	Single Resource:	Threat:
Management by Objective:	Prevention:	Situation Unit:	Time Unit:
Managers:	Procurement Unit:	Span of Control:	Type:
Medical Unit:	Public Information Officer (PIO):	Staging Area:	Tools:
Message Center:	Recognition Primed <u>Decisionmaking</u> :	Standard Operating Procedure (SOP):	Tribal:
Mitigation:	Unity of Command:	State:	Unified Area Command:
Mobilization:		Strategy:	Unified Command:
Mobilization Center:			Unit:

ICS Key definitions/terminology (SLO) 1/2

Načrt odziva	Lokacija nastanitve - Nastanitev	Enota za spremljanje stroškov (GZS ocena stroškov)	Center vodenja (izrednih) operacij (EOCs)
Agencija (Institucija) - kot splošen izraz za samostojen organ s samostojnim nosilcem pooblastil	Veriga poveljevanja	Posadka	Načrt izvajanja intervencije
Izvršni direktor ali pooblaščenec agencije	Registracija/prijava:	Prenos pooblastil (delegacija pooblastil)	Dogodek
Izvorna agencija	Vodja (poveljnik, načelnik)	Demobilizacijska enota	Enota za objekte
Predstavnik agencije	Preprost jezik	Namestnik	Zvezni
Vodja letalskih operacij?	Ukaz	Direktor	Terenska navodila za uporabo sistema ICS
Oddeljeni viri	Komandno mesto, lokacija vodenja	Odprema	Oddelek za finance in administracijo
Vsa tveganja - izraz - opredeliti	ŠTABNO OSEBJE - GZS (Osebe vodje intervencije)	Center za odpremo	Enota za prehrano
Območni štab - (Državni, regijski, občinski)	Enota za komunikacije	Sektor	Funkcija
Dodeljeni viri	Dogovor o sodelovanju	Enota za dokumentacijo	Splošno osebje
Zadolžitve	Enota za kompenzacije in zahtevke	Izredno stanje - izredno stanje (pomeni aktiviranje nalog, ki jih izvajamo v izrednem stanju, to je prehod iz načina rednega delovanja v način, ki ga opredeljuje okvir nalog, ki so predvidene za izredno stanje), povezano z razglasitvijo izrednega stanja	Enota za prevoze
Pomočnik:	Kompleksni incident (ne dogodek!) To ni kompleksna intervencija, ker se ta šele razvije nad kompleksnim dogodkom?	Vodja intervencije s političnimi pooblastili (težaven izraz)	Skupina
Podporna agencija	Sodelujoča agencija		Nevarnost
Razpoložljivi viri (sredstva)	Koordinacija		Helidrom
Center operacij izvajanja operacij	Center za koordinacijo		Hierarhija poveljevanja
Podružnica	Sporazumi o delitvi stroškov		Incident (dogodek)
Zaloga			Akcijski načrt intervencije (načrt ukrepanja ob intervenciji)

ICS (definition):

A standardized on-scene emergency management construct specifically designed to provide for the adoption of an integrated organizational structure that reflects the complexity and demands of single or multiple incidents, without being hindered by jurisdictional boundaries. ICS is the combination of facilities, equipment, personnel, procedures, and communications operating within a common organizational structure, designed to aid in the management of resources during incidents. It is used for all kinds of emergencies and is applicable to small as well as large and complex incidents. ICS is used by various jurisdictions and functional agencies, both public and private, to organize field-level incident management operations.

ICS (definicija):

Standardiziran niz vsebin za obvladovanje izrednih dogodkov na kraju samem, posebej zasnovan za zagotovitev vzpostavitve povezane organizacijske strukture, ki odraža zapletenost in zahteve posameznih ali več incidentov, ne da bi ga pri tem ovirale meje pristojnosti. ICS je kombinacija lokacij, opreme, osebja, postopkov in komunikacij, ki delujejo v skupni organizacijski strukturi in so zasnovani kot pomoč pri upravljanju virov med incidenti. Uporablja se za vse vrste nujnih primerov in je primeren za manjše kot tudi večje in zapletene incidente. ICS uporabljajo institucije različnih pristojnosti in nivojev, tako javne kot zasebne, za organizacijo operacij upravljanja z izrednimi dogodkih na samem terenu.

ICS Principles:

ICS consists of a standard management hierarchy and procedures for managing temporary incident(s) of any size. ICS procedures should be pre-established and sanctioned by participating authorities, and personnel should be well-trained prior to an incident.

ICS includes procedures to select and form temporary management hierarchies to control funds, personnel, facilities, equipment, and communications. Personnel are assigned according to established standards and procedures previously sanctioned by participating authorities. ICS is a system designed to be used or applied from the time an incident occurs until the requirement for management and operations no longer exist.

Načela ICS:

ICS je sestavljen iz standardne hierarhije upravljanja in postopkov za upravljanje začasnih incidentov katere koli velikosti. Sodelujoči organi bi morali vnaprej določiti in uveljaviti postopke ICS, osebje pa bi moralo biti dobro usposobljeno pred incidentom.

ICS vključuje postopke za izbiro in oblikovanje začasnih (dinamičnih) hierarhij upravljanja za nadzor sredstev, osebja, objektov, opreme in komunikacij. Osebje se razporedi v skladu z uveljavljenimi standardi in postopki, ki so jih predhodno opredelili sodelujoči organi. ICS je sistem, ki je zasnovan za uporabo ali uporabo od trenutka, ko se zgodi incident, do tedaj, ko potrebe po upravljanju in operacijah več.

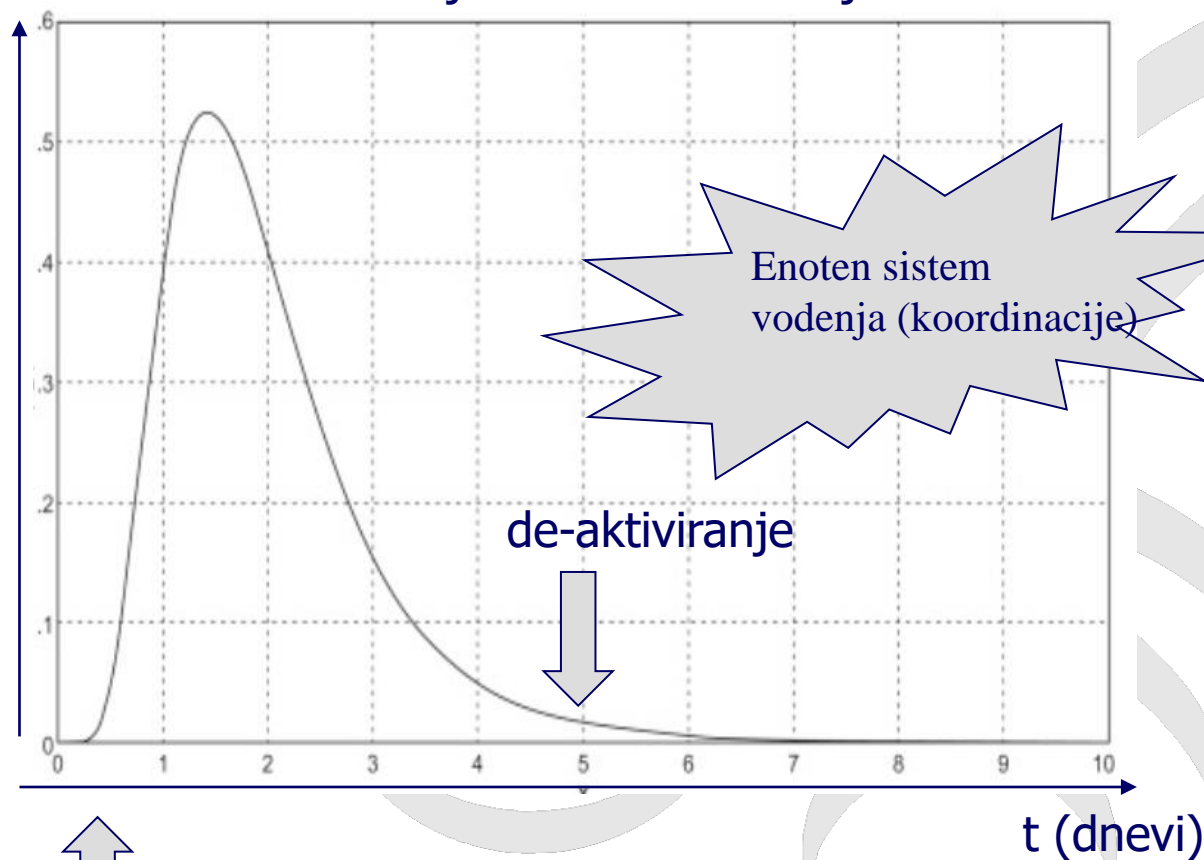
ICS je interdisciplinaren in organizacijsko prilagodljiv, da se odzove na naslednje izzive upravljanja: :

- Izpolnjuje potrebo po pooblastilih za obravnavanje kakršnih koli incidentov ali zapletenosti (tj. širitev/krčenje in prilagajanje po potrebi).
- Osebjem iz številnih agencij omogoča hitro združitev v skupno strukturo upravljanja/vodenja s skupno terminologijo.
- Zagotavlja logistično in upravno podporo operativnemu osebju.
- Je učinkovit in se izogiba podvajanju naporov in dodatnih stroškov.
- Ne glede na kompleksnost dogodka vzpostavlja eno samo, centralno pooblaščen organizacijo za nujne primere.

Izziv upravljanja z izrednimi stanji:

Razpon kontrole (span of control),
situacijsko zavedanje, pooblastila za
odločanje na različnih nivojih?

Aktivirani viri



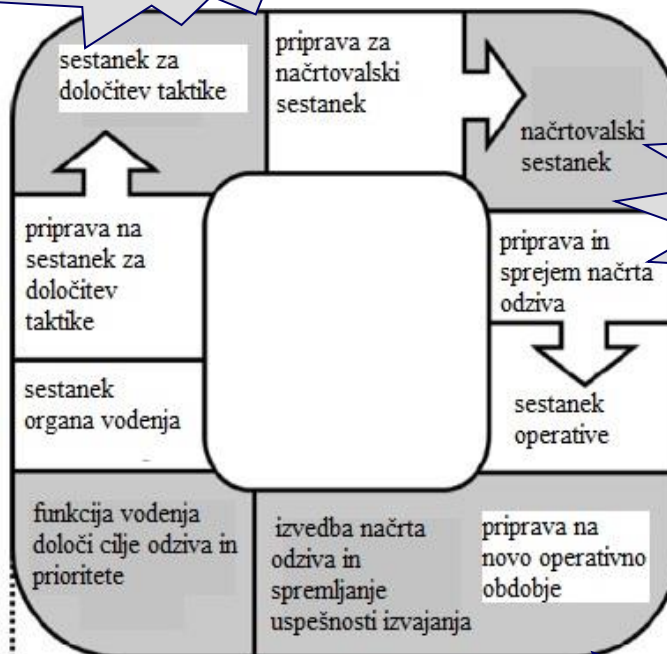
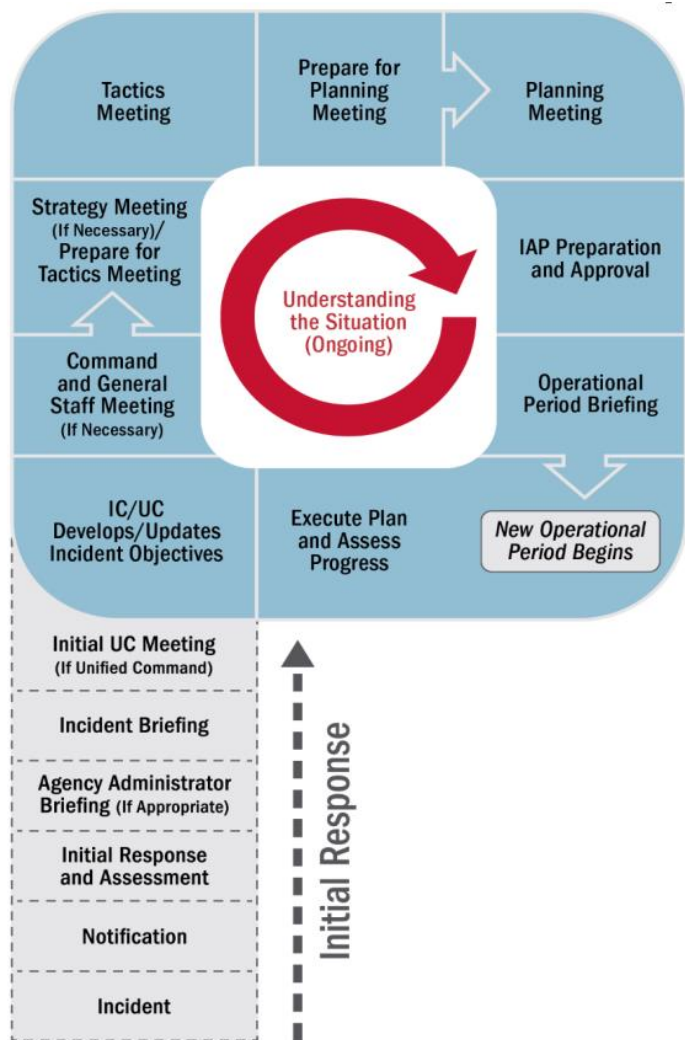
Aktivacija
/mobilizacija



Cikel vodenja nesreč:



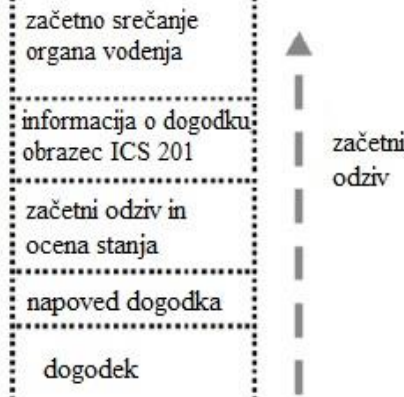
Planning „P“ -



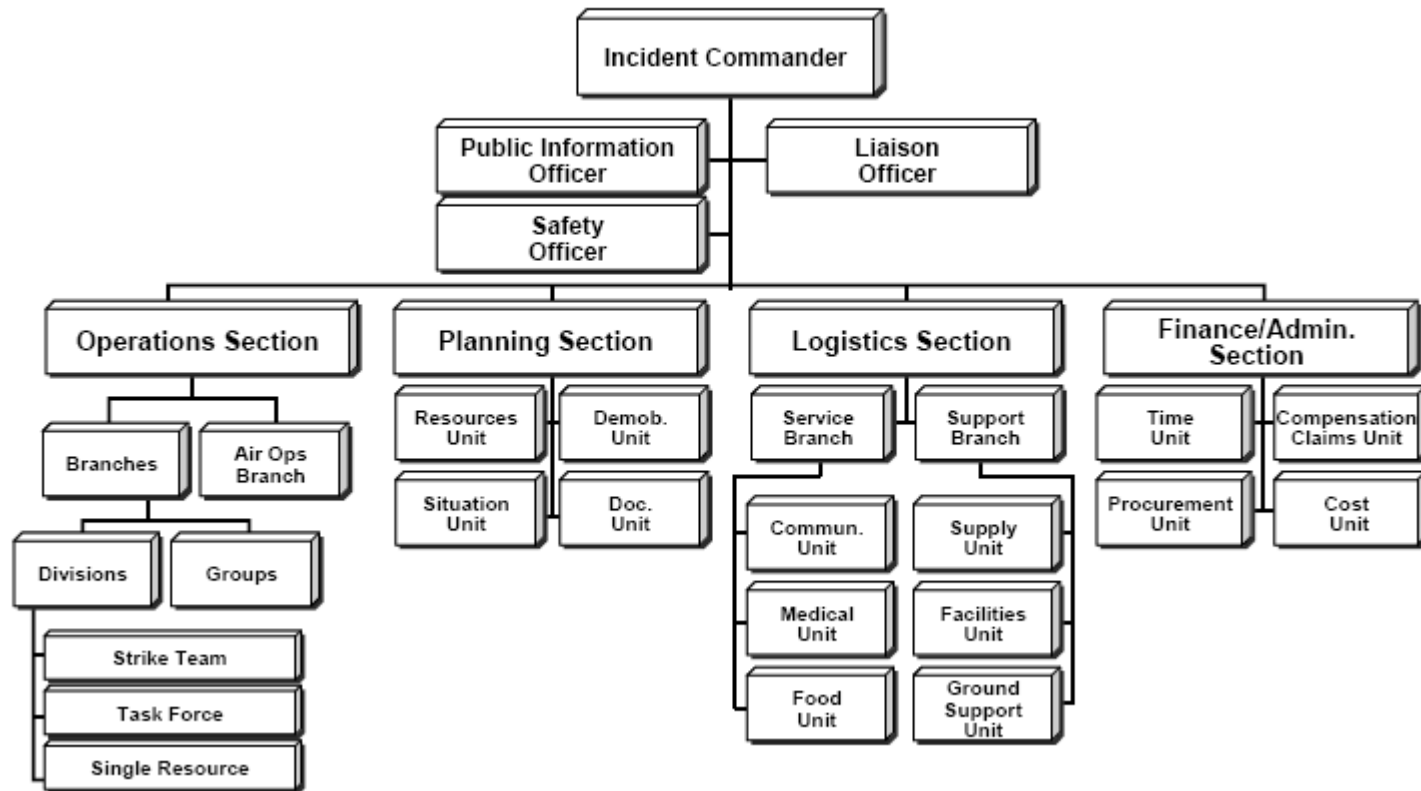
BiH

Srbija

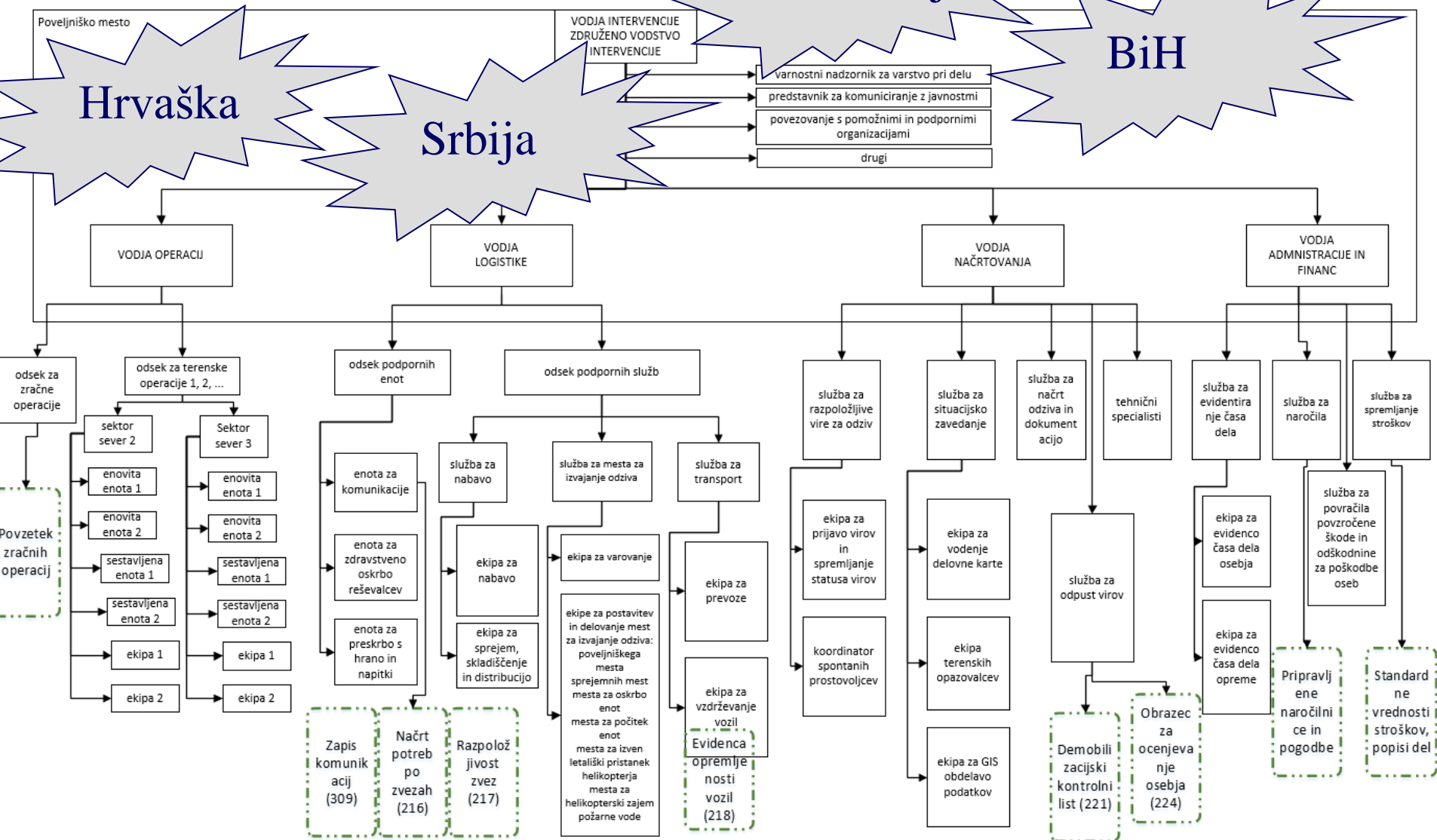
Hrvaška



ICS / NIMS - Osnovni okvir za vodenje intervencije



ICS – povezovanje, usklajevanje



WACOM TOOLBOX in ICS

- Standardne definicije (terminologija)
- Prizadevanje za združljivost s sistemom ICS / NIMS - zato si prizadeva za minimalno združljivost med 4 nacionalnimi sistemi za obvladovanje incidentov in zapletenostjo njihovih struktur
- Povratne informacije - izobraževanje struktur glede na določene vloge v ICS
- Obravnava samo ciljno usmerjenih komponent ICS (ne vseh)
 - » Kdo je kdo? (207)
 - » Kaj se dogaja in napovedi za 24, 48 in 72 ur (209)
 - » Kaj bomo počeli jutri / danes „Načrt odziva“
- Usposabljanja

KOMUNIKACIJA

- Standardizirane komunikacijske vsebine (obrazci ICS 201 do 235).
- Standardizirana komunikacijska struktura - obvezna priprava (kdo), obvezna potrditev (kdo), obvezen prejemnik (kdo)
- Omogočanje in arhiviranje celotne komunikacije (dokumentacijske enote) za poznejšo analizo dogodkov

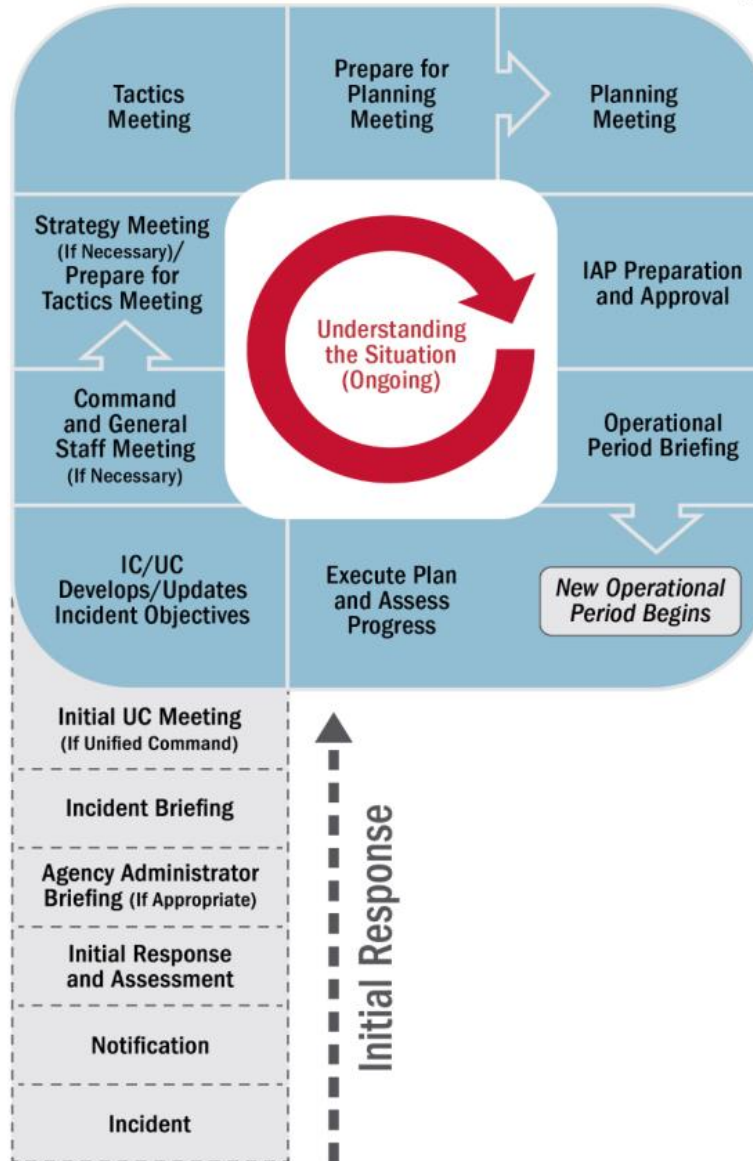
KOMUNIKACIJA (vsi obrazci – standardiziranost vsebin)

ICS Form #:	Form Title:	Typically Prepared By:
ICS 201	Incident Briefing	Initial Incident Commander
ICS 202*	Incident Objectives	Planning Section Chief
ICS 203*	Organization Assignment List	Resources Unit Leader
ICS 204*	Assignment List	Resources Unit Leader and Operations Section Chief
ICS 205*	Incident Radio Communications Plan	Communications Unit Leader
ICS 205A	Communications List	Communications Unit Leader
ICS 206*	Medical Plan	Medical Unit Leader (reviewed by Safety Officer)
ICS 207	Incident Organization Chart	Resources Unit Leader
ICS 208**	Safety Message/Plan	Safety Officer
ICS 209	Incident Status Summary	Situation Unit Leader
ICS 210	Resource Status Change	Communications Unit Leader
ICS 211	Incident Check-In List	Resources Unit/Check-In Recorder
ICS 213	General Message (3-part form)	Any Message Originator
ICS 214	Activity Log	All Sections and Units
ICS 215	Operational Planning Worksheet	Operations Section Chief
ICS 215A	Incident Action Plan Safety Analysis	Safety Officer
ICS 216	Radio Requirement Worksheet	Communications Unit
ICS 217	Communications Resource Availability	Communications Unit
ICS 218	Support Vehicle/Equipment Inventory	Ground Support Unit
ICS 220**	Air Operations Summary Worksheet	Operations Section Chief or Air Branch Director
ICS 221	Demobilization Check-Out	Demobilization Unit Leader
ICS 224	Crew Performance Rating	Crew Supervisor
ICS 225	Incident Personnel Performance Rating	Supervisor
ICS 230	Daily Meeting Schedule	Situation Unit Leader
ICS 232	Resources at Risk Summary	Environmental Specialist/Unit Leader
ICS 233	Incident Open Action Tracker	Planning Section Chief
ICS 234	Work Analysis Matrix	Operations/Planning Section Chiefs
ICS 309	Communications Log	Communication Unit



<https://training.fema.gov/icsresource/icsforms.aspx>

KOMUNIKACIJA



OBRAZCI (201-309)

Za potrebe informiranja vseh deležnikov (vsi nivoji, vse aktivirane institucije)

Se umeščajo v 24-urni cikel

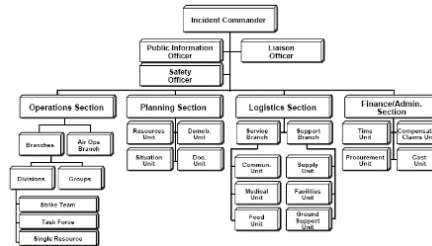
KOMUNIKACIJA – standardne vsebine (priprava, posredovanje)

ICS 201
Incident Briefing

ICS 202
Incident Objectives

ICS 203
Organization Assignment List

ICS 207
Incident Organization Chart



Standardno: na tabli



Sodobno: na spletni aplikaciji

Purpose. The Incident Organization Chart (ICS 207) provides a **visual wall chart** depicting the ICS organization position assignments for the incident. The ICS 207 is used to indicate what ICS organizational elements are currently activated and the names of personnel staffing each element. An actual organization will be event-specific. The size of the organization is dependent on the specifics and magnitude of the incident and is scalable and flexible. Personnel responsible for managing organizational positions are listed in each box as appropriate.

Preparation. The ICS 207 is prepared by the Resources Unit Leader and reviewed by the Incident Commander. Complete only the blocks where positions have been activated, and add additional blocks as needed, especially for Agency Representatives and all Operations Section organizational elements. The ICS 207 is intended to be used as a wall-size chart and printed on a plotter for better visibility. A chart is completed for each operational period, and updated when organizational changes occur.

Distribution. The ICS 207 is intended to be **wall mounted** at Incident Command Posts and other incident locations as needed, and is not intended to be part of the Incident Action Plan (IAP). All completed original forms must be given to the Documentation Unit.

KOMUNIKACIJA – standardne vsebine (priprava, posredovanje)

ICS 208
Safety Message/Plan

ICS 209
Incident Status Summary



Pomembno za projekt WACOM, vertikalno poročanje (od spodaj navzgor) in povezovanje - stanja (izredno onesnaženje, poplave in napoved - zlasti potrebe po virih)

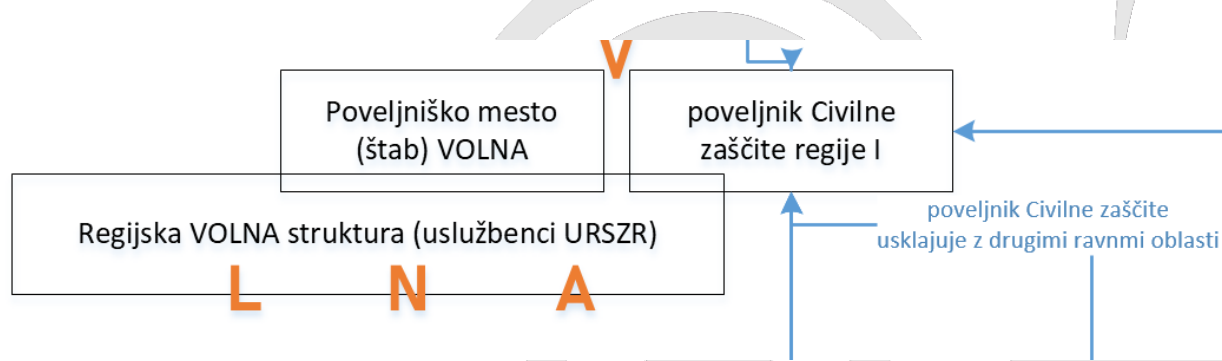
Purpose. The ICS 209 is used for reporting information on significant incidents. It is not intended for every incident, as most incidents are of short duration and do not require scarce resources, significant mutual aid, or additional support and attention. The ICS 209 contains basic information elements needed to support decision-making at all levels above the incident to support the incident. Decision makers may include the agency having jurisdiction, but also all multiagency coordination system (MACS) elements and parties, such as cooperating and assisting agencies/organizations, dispatch centers, emergency operations centers, administrators, elected officials, and local, County, Provincial, and Federal agencies. Once ICS 209 information has been submitted from the incident, decision makers and others at all incident support and coordination points may transmit and share the information (based on its sensitivity and appropriateness) for access and use at local, regional, provincial, and national levels as it is needed to facilitate support.

Accurate and timely completion of the ICS 209 is necessary to identify appropriate resource needs, determine allocation of limited resources when multiple incidents occur, and secure additional capability when there are limited resources due to constraints of time, distance, or other factors. The information included on the ICS 209 influences the priority of the incident, and thus its share of available resources and incident support.

The ICS 209 is designed to provide a “snapshot in time” to effectively move incident decision support information where it is needed. It should contain the most accurate and up-to-date information available at the time it is prepared. However, readers of the ICS 209 may have access to more up-to-date or real-time information in reference to certain information elements on the ICS 209. Coordination among communications and information management elements within ICS and among MACS should delineate authoritative sources for more up-to-date and/or real-time information when ICS 209 information becomes outdated in a quickly evolving incident.

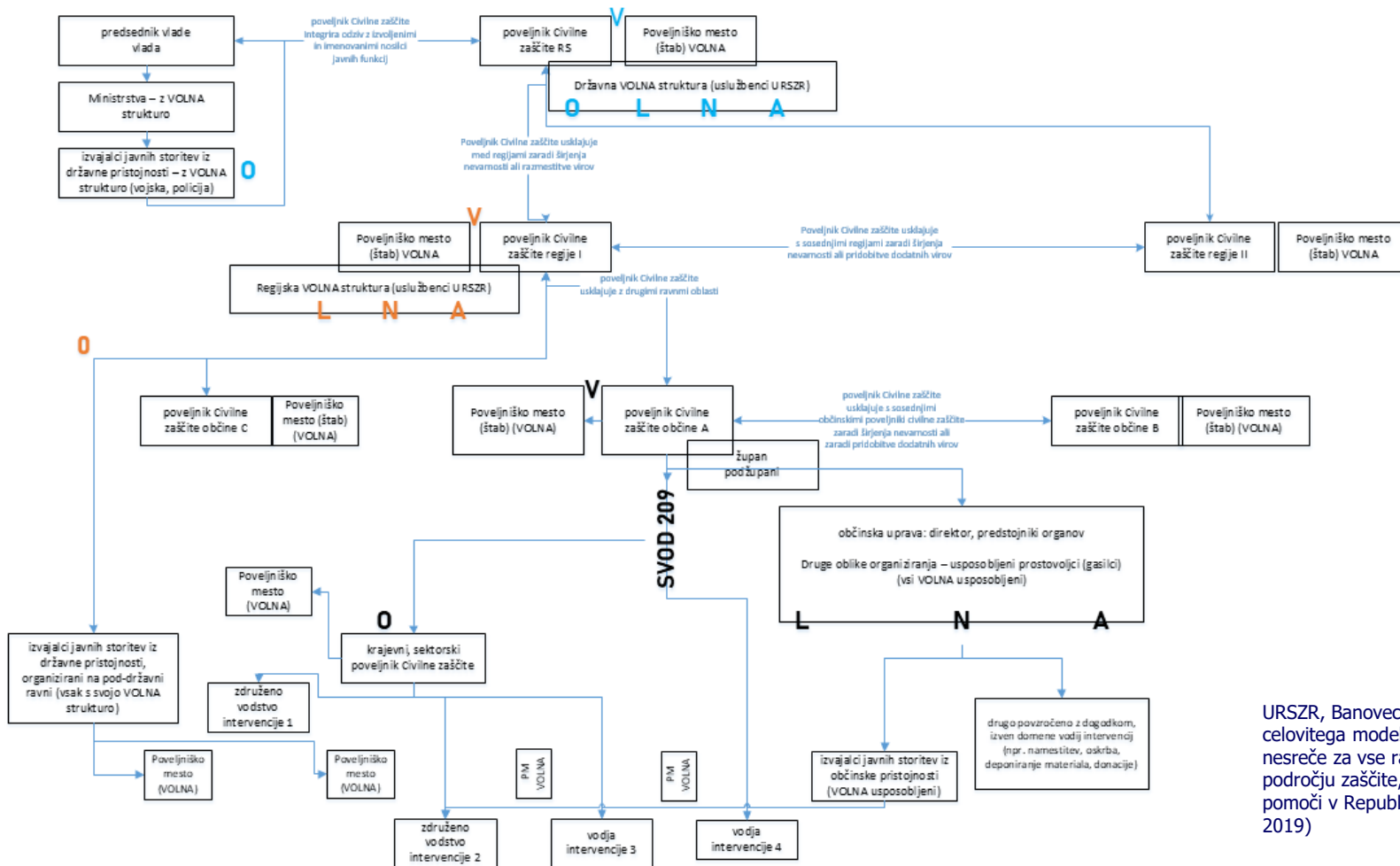
Prilagajanje postopkom prilagajanja, ki so trenutno v teku (primer: Slovenija)

- Incident Command System → Sistem Vodenja ODziva (ICS → SVOD)
- Incident Command – Operations – Logistics – Planning – Administration → VOLNA Vodenje, Operativa, Logistika, Načrtovanje, Administracija.



Prilagajanje postopkom prilagajanja, ki so trenutno v teku (primer: Slovenija)

SVOD – model vertikalnega komunikacijskega toka



URSZR, Banovec P. : Oblikovanje celovitega modela vodenja odziva na nesreče za vse ravni vodenja na področju zaščite, reševanja in pomoči v Republiki Sloveniji (2017-2019)

Prilagajanje postopkom prilagajanja, ki so trenutno v teku (primer: Hrvaška)

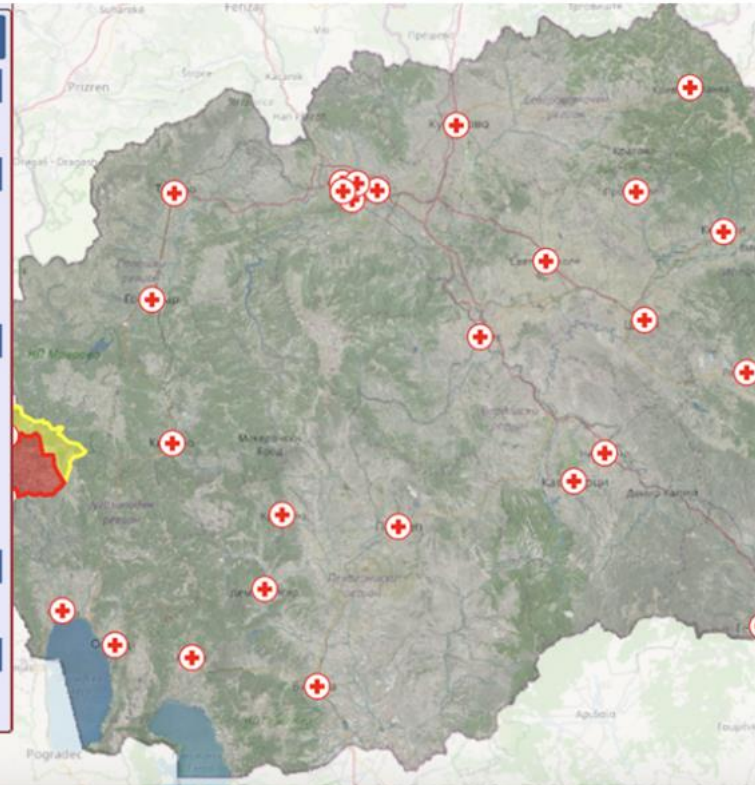
Emergency-coordination system from Lincoln Laboratory supports Covid-19 response

North Macedonia is using the Next-Generation Incident Command System to coordinate emergency services and inform the public about Covid-19 cases.

Kylie Foy | Lincoln Laboratory
April 6, 2020

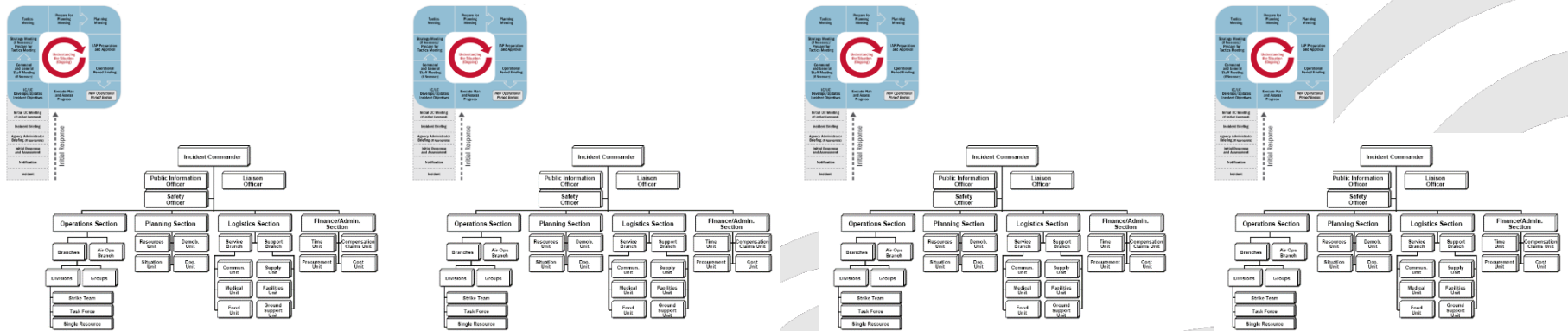


Infection	Skopje	Quarantine	Activities
Пункт на ЦКРСМ			
Type : Пункт на Црвен Крст на РСМ			
Comment : канцеларија на ООЦК Пробиштип			
Пункт на ЦКРСМ			
Type : Пункт на Црвен Крст на РСМ			
Comment : канцеларија на ООЦК Валандово , телефонски број за услуга за набавка на храна , хигиена и лекови ????, временска рамка од ? до ? часот.			
Пункт на ЦКРСМ			
Type : Пункт на Црвен Крст на РСМ			
Comment : канцеларија на ООЦК Струмица, телефонски број за услуга за набавки на храна , хигиена и лекови 071345901. временска рамка од 10 до 12 часот. Контакт за психосоцијална поддршка 071345901 од 10 до 14 часот.			
Пункт на ЦКРСМ			
Type : Пункт на Црвен Крст на РСМ			
Comment : канцеларија на ООЦК Неготино			
Пункт на ЦКРСМ			
Type : Пункт на Црвен Крст на РСМ			
Comment : канцеларија на ООЦК Гевгелија			



Pot naprej - od WPT1 - opredelitev koncepta povezovanja do WP2 (razvoj orodja)

Naslednji korak - podrobna opredelitev modula in koncepti integracije



Skupno razumevanje struktur in postopkov v vseh 4 državah - podprto s strani WACOM

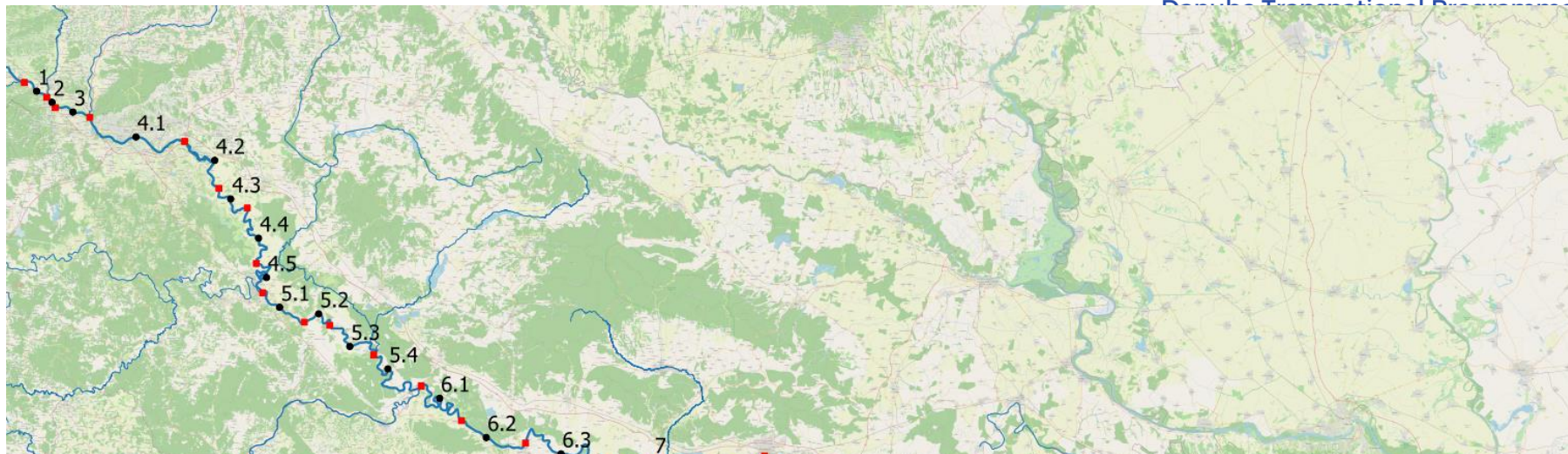
WACOM ORODJE: INTEGRATED TOOLBOX



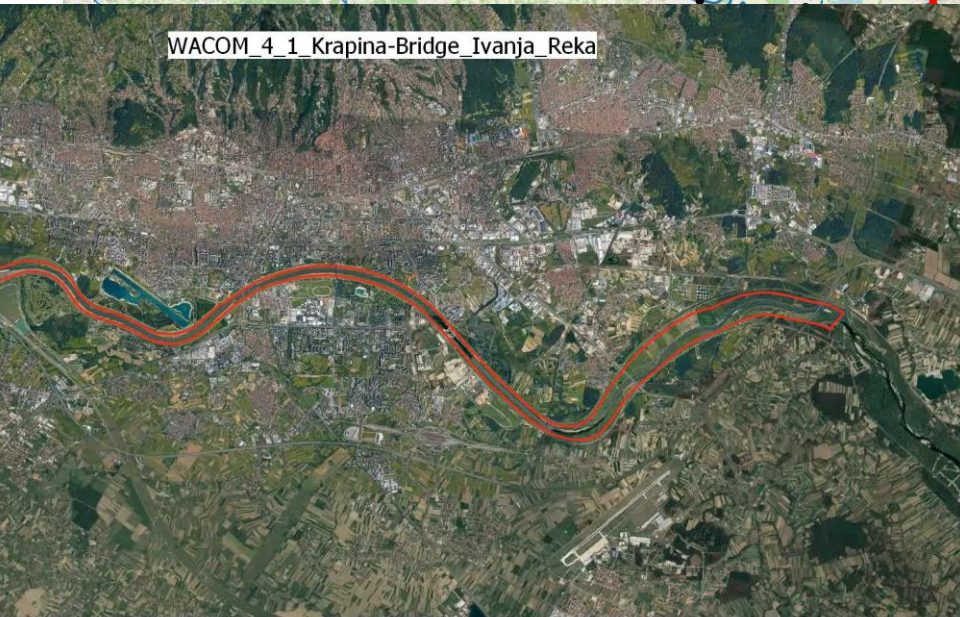
Orodje za modeliranje
nesreč (delno ICS 215 –
Sava GIS, Sava HIS,
Sava NIS)

Koordinacija nesreč
Orodje (ICS organizacijska
struktura po državah, ICS
obrazec 207)

Izmenjava podatkov o stanju
(ICS obrazec 209)



WACOM 4_1_Krapina-Bridge_Ivanja_Reka



40 odsekov
modela za reko
Savo s pritoki
(Slovenija)

31 odsekov 2D
modela za reko
Savo (Sotla-
Donava)

River reach number	Model section	model ID
1	from Čatež to confluence with Sutla	1
2	from confluence with Sutla to confluence with Bregana	2
3	from confluence with Bregana to confluence with Krapina	3
4	from confluence with Krapina to highway bridge at Ivanja Reka	4
	from bridge at Ivanja Reka to ferry line between Oborovo and Vrbovo	5
	from ferry line between Oborovo and Vrbovo to ferry line between Desni Dubrovčak and Lijevi Dubrovčak	6
	from ferry line between Desni Dubrovčak and Lijevi Dubrovčak to ferry line at Tišina	7
	from ferry line at Tišina to confluence with Kupa	8
5	from confluence with Kupa to ferry line at Gradusa Posavska	9
	from ferry line at Gradusa Posavska to ferry line at Selišće Sunjsko	10
	from ferry line at Selišće Sunjsko to Lonsko polje	11
6	from Lonsko polje to confluence with Una	12
	from confluence with Una to Orahova	13
	from Orahovo to Gradiška	14
7	from Gradiška to confluence with Vrbas	15
	from confluence with Vrbas to confluence with Orljava	16
8	from confluence with Orljava to Brod	17
	from Brod to Donji Svilaj	18
	from Donji Svilaj to confluence with Bosna	19
9	from confluence with Bosna to Domaljevac	20
	from Domaljevac to Orašje	21
	from Orašje to confluence with Tinja	22
10	from confluence with Tinja to Brčko	23
	from Brčko to ferry line at Jamena	24
	from ferry line at Jamena to confluence with Drina	25
11	from confluence with Drina to confluence with Bosut	26
	from confluence with Bosut to Sremska Mitrovica	27
12	from Sremska Mitrovica to Šabac	28
	from Šabac to TPP Nikola Tesla	29
	from TPP Nikola Tesla to confluence with Kolubara	30
13	from confluence with Kolubara to Beograd	31

WACOM – ICS - ZAKLJUČKA

Incident command system – (Slovenija: Sistem Vodenja ODziva - SVOD; Hrvaška: NICS)

- Gre za standardiziran, vendar dinamično prilagodljiv model dela in komunikacij
- Se vzpostavi in uporablja se v vsaki organizaciji, ki je dejavna v katerem koli zapletenem okviru načrtovanja / odzivanja

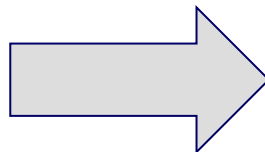
RAZMISLEK:

- Kako gledate na izvajanje modela odzivanja in obvladovanja nesreč ICS za svojo realnost in svojo institucijo
- Obstoječe strukture in procesi v institucijah običajno ustrezajo modelu ICS, vendar zahtevajo določene prilagoditve

INCIDENT ORGANIZATION CHART (ICS 207)

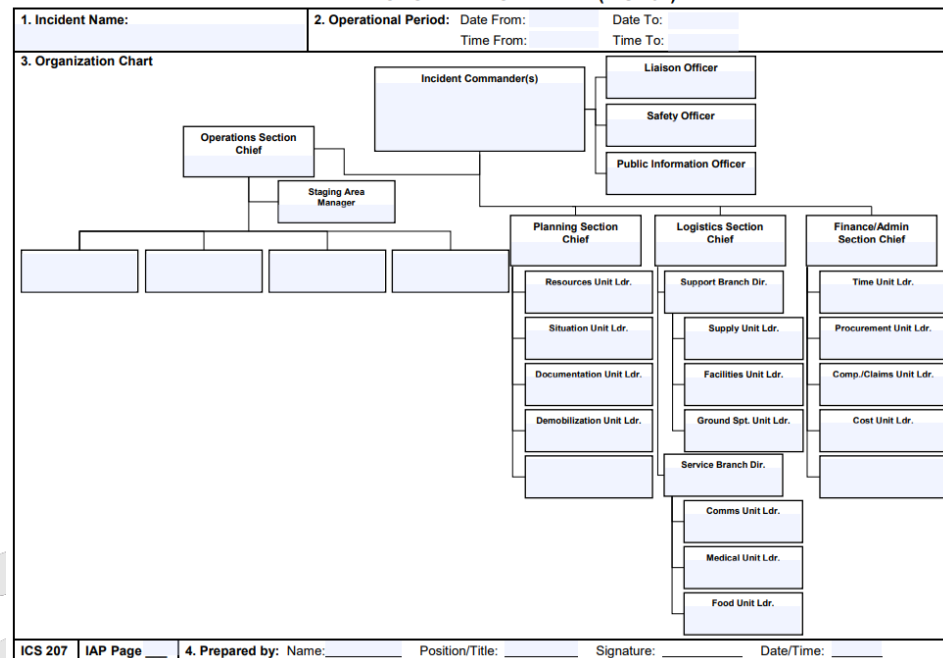
Izhodišča za delo po skupinah:

207 Kdo vodi dogodek ?



209 Kakšno je stanje konec dneva? (situational awareness), potrebe čez 24h, 48h, 72h, (resource requirements) – bottom-up?

IAP Kaj je v načrtu operativnih nalog za danes?



Izhodišča za delo po skupinah:

207 Kdo vodi dogodek ?

209 Kakšno je stanje konec dneva? (situational awareness), potrebe čez 24h, 48h, 72h, (resource requirements) – bottom-up?

IAP Kaj je v načrtu operativnih nalog za danes?

Incident Summary

*28. Significant Events for the Time Period Reported (summarize significant progress made, evacuations, incident growth, etc.):				
29. Primary Materials or Hazards Involved (hazardous chemicals, fuel types, infectious agents, radiation, etc.):				
30. Damage Assessment Information (summarize damage and/or restriction of use or availability to residential or commercial property, natural resources, critical infrastructure and key resources, etc.):	A. Structural Summary	B. # Threatened (72 hrs)	C. # Damaged	D. # Destroyed
	E. Single Residences			
	F. Nonresidential Commercial Property			
	Other Minor Structures			
	Other			
ICS 209, Page 1 of ____			* Required when applicable.	

INCIDENT STATUS SUMMARY (ICS 209)

*1. Incident Name:	2. Incident Number:
<i>Additional Incident Decision Support Information (continued)</i>	
38. Current Incident Threat Summary and Risk Information in 12-, 24-, 48-, and 72-hour timeframes and beyond. Summarize primary incident threats to life, property, communities and community stability, residences, health care facilities, other critical infrastructure and key resources, commercial facilities, natural and environmental resources, cultural resources, and continuity of operations and/or business. Identify corresponding incident-related potential economic or cascading impacts.	
12 hours:	
24 hours:	
48 hours:	
72 hours:	
Anticipated after 72 hours:	
39. Critical Resource Needs in 12-, 24-, 48-, and 72-hour timeframes and beyond to meet critical incident objectives. List resource category, kind, and/or type, and amount needed, in priority order:	
12 hours:	
24 hours:	
48 hours:	
72 hours:	
Anticipated after 72 hours:	
40. Strategic Discussion: Explain the relation of overall strategy, constraints, and current available information to:	
1) critical resource needs identified above.	

WACOM – WP2

Razprava – delo v skupinah

