

WACOM

**Prikaz sistema za razmjenu informacija i koordinaciju sudionika kod vanrednih situacija (Incident Command System - ICS) s posebnim naglaskom na elemente:
207 (Incident Organization Chart),
209 (Incident Status Summary)
i IAP (Incident Action Plan)**

WACOM national workshop BiH
May 11th, 2021

History of the ICS:

The ICS concept was formed in 1968 at a meeting of Fire Chiefs in Southern California. The program was built primarily to take after the management hierarchy of the US Navy and it was mainly for fire fighting of wildfires in California. During the 1970s, ICS was fully developed during massive wildfire suppression efforts in California (FIREScope) that followed a series of catastrophic wildfires, starting with the massive Laguna fire in 1970. Property damage ran into the millions, and many people died or were injured. **Studies determined that response problems often related to communication and management deficiencies rather than lack of resources or failure of tactic.**

155 ICS Key definitions/terminology 1/2:

Action Plan:	Check-In:	Dispatch:	Hazard:
Agency:	Chief:	Dispatch Center:	Helibase:
Agency Administrator or Executive:	Clear Text:	Division:	Helispot:
Agency Dispatch:	Command:	Documentation Unit:	Hierarchy of Command:
Agency Representative:	Command Post:	Emergency:	Incident:
Air Operations Branch Director:	Command Staff:	Emergency Management Coordinator/Director:	Incident Action Plan (IAP):
Allocated Resources:	Communications Unit:	Emergency Operations Centers (EOCs):	Incident Base:
All-Risk:	Compacts:	Emergency Operations Plan (EOP):	Incident Commander (IC):
Area Command (Unified Area Command):	Compensation/Claims Unit:	Event:	Incident Command Post (ICP):
Assigned Resources:	Complex:	Facilities Unit:	Incident Command System (ICS):
Assignments:	Cooperating Agency:	Federal:	Incident Communications Center:
Assistant:	Coordination:	Field Operations Guide:	Incident Complex:
Assisting Agency:	Coordination Center:	Finance/Administration Section:	Incident Management Team (IMT):
Available Resources:	Cost Sharing Agreements:	Food Unit:	Incident Objectives:
Base:	Cost Unit:	Function:	Incident Support Organization:
Branch:	Crew:	General Staff:	Initial Action:
Cache:	Delegation of Authority:	Ground Support Unit:	Initial Response:
Camp:	Demobilization Unit:	Group:	Intelligence Officer:
Chain of Command:	Deputy:		
	Director:		

155 ICS Key definitions/terminology 2/2:

Joint Information Center (JIC):	Multiagency Coordination (MAC):	Recorders:	Strategic:
Joint Information System (JIS):	Multiagency Coordination Systems (MACS):	Reinforced Response:	Strike Team:
Jurisdiction:	Multiagency Incident:	Reporting Locations:	Supervisor:
Jurisdictional Agency:	Mutual-Aid Agreement:	Resources:	Supply Unit:
Kinds of Resources:	National Incident Management System (NIMS):	Recovery:	Support Branch:
Landing Zone:	Officer:	Resource Management:	Supporting Materials:
Leader:	Operational Period:	Resources Unit:	Support Resources:
Liaison:	Operations Section:	Response:	Tactical Direction:
Liaison Officer (LNO):	Out-of-Service Resources:	Safety Officer:	Tactics:
Logistics:	Planning Meeting:	Section:	Task Force:
Logistics Section:	Planning Section:	Segment:	Team:
Local Government:	Preparedness:	Service Branch:	Technical Specialists:
Major Disaster:	Preparedness Organizations:	Single Resource:	Threat:
Management by Objective:	Prevention:	Situation Unit:	Time Unit:
Managers:	Procurement Unit:	Span of Control:	Type:
Medical Unit:	Public Information Officer (PIO):	Staging Area:	Tools:
Message Center:	Recognition Primed Decisionmaking:	Standard Operating Procedure (SOP):	Tribal:
Mitigation:	Unity of Command:	State:	Unified Area Command:
Mobilization:		Strategy:	Unified Command:
Mobilization Center:			Unit:

ICS Key definitions/terminology (SLO) 1/2

Načrt odziva	Lokacija nastanitve - Nastanitev	Enota za spremljanje stroškov (GZS ocena stroškov)	Center vodenja (izrednih) operacij (EOCs)
Agencija (Institucija) - kot splošen izraz za samostojen organ s samostojnim nosilcem pooblastil	Veriga poveljevanja	Posadka	Načrt izvajanja intervencije
Izvršni direktor ali pooblaščenec agencije	Registracija/prijava:	Prenos pooblastil (delegacija pooblastil)	Dogodek
Izvorna agencija	Vodja (poveljnik, načelnik)	Demobilizacijska enota	Enota za objekte
Predstavnik agencije	Preprost jezik	Namestnik	Zvezni
Vodja letalskih operacij?	Ukaz	Direktor	Terenska navodila za uporabo sistema ICS
Oddeljeni viri	Komandno mesto, lokacija vodenja	Odpreda	Oddelek za finance in administracijo
Vsa tveganja - izraz - opredeliti	ŠTABNO OSEBJE - GZS (Osebe vodje intervencije)	Center za odpremo	Enota za prehrano
Območni štab - (Državni, regijski, občinski)	Enota za komunikacije	Sektor	Funkcija
Dodeljeni viri	Dogovor o sodelovanju	Enota za dokumentacijo	Splošno osebje
Zadolžitve	Enota za kompenzacije in zahteve	Izredno stanje - izredno stanje (pomeni aktiviranje nalog, ki jih izvajamo v izrednem stanju, to je prehod iz načina rednega delovanja v način, ki ga opredeljuje okvir nalog, ki so predvidene za izredno stanje), povezano z razglasitvijo izrednega stanja	Enota za prevoze
Pomočnik:	Kompleksni incident (ne dogodek!) To ni kompleksna intervencija, ker se ta šele razvije nad kompleksnim dogodkom?	Vodja intervencije s političnimi pooblastili (težaven izraz)	Skupina
Podporna agencija	Sodelujoča agencija		Nevarnost
Razpoložljivi viri (sredstva)	Koordinacija		Helidrom
Center operacij izvajanja operacij	Center za koordinacijo		Hierarhija poveljevanja
Podružnica	Sporazumi o delitvi stroškov		Incident (dogodek)
Zaloga			Akcijski načrt intervencije (načrt ukrepanja ob intervenciji)

ICS (definition):

A standardized on-scene emergency management construct specifically designed to provide for the adoption of an integrated organizational structure that reflects the complexity and demands of single or multiple incidents, without being hindered by jurisdictional boundaries. ICS is the combination of facilities, equipment, personnel, procedures, and communications operating within a common organizational structure, designed to aid in the management of resources during incidents. It is used for all kinds of emergencies and is applicable to small as well as large and complex incidents. ICS is used by various jurisdictions and functional agencies, both public and private, to organize field-level incident management operations.

ICS (definicija):

Standardizirani konstrukt za upravljanje vanrednim situacijama na licu mjesta posebno dizajniran da omogući usvajanje integrirane organizacione strukture koja odražava složenost i zahtjeve pojedinačnih ili višestrukih incidenata, a da ga ne ometaju granice nadležnosti. ICS je kombinacija objekata, opreme, osoblja, procedura i komunikacija koje djeluju u zajedničkoj organizacionoj strukturi, osmišljenoj da pomogne u upravljanju resursima tokom incidenata. Koristi se za sve vrste hitnih slučajeva i primjenjiv je na male, ali i velike i složene incidente. ICS koriste razne jurisdikcije i funkcionalne agencije, kako javne tako i privatne, za organizaciju operacija upravljanja incidentima na terenu.

ICS Principles:

ICS consists of a standard management hierarchy and procedures for managing temporary incident(s) of any size. ICS procedures should be pre-established and sanctioned by participating authorities, and personnel should be well-trained prior to an incident.

ICS includes procedures to select and form temporary management hierarchies to control funds, personnel, facilities, equipment, and communications. Personnel are assigned according to established standards and procedures previously sanctioned by participating authorities. ICS is a system designed to be used or applied from the time an incident occurs until the requirement for management and operations no longer exist.

ICS Principi:

ICS se sastoji od standardne hijerarhije upravljanja i procedura za upravljanje privremenim incidentima bilo koje veličine. Postupci ICS-a trebaju unaprijed uspostaviti i sankcionirati vlasti koje učestvuju, a osoblje treba biti dobro obučeno prije incidenta.

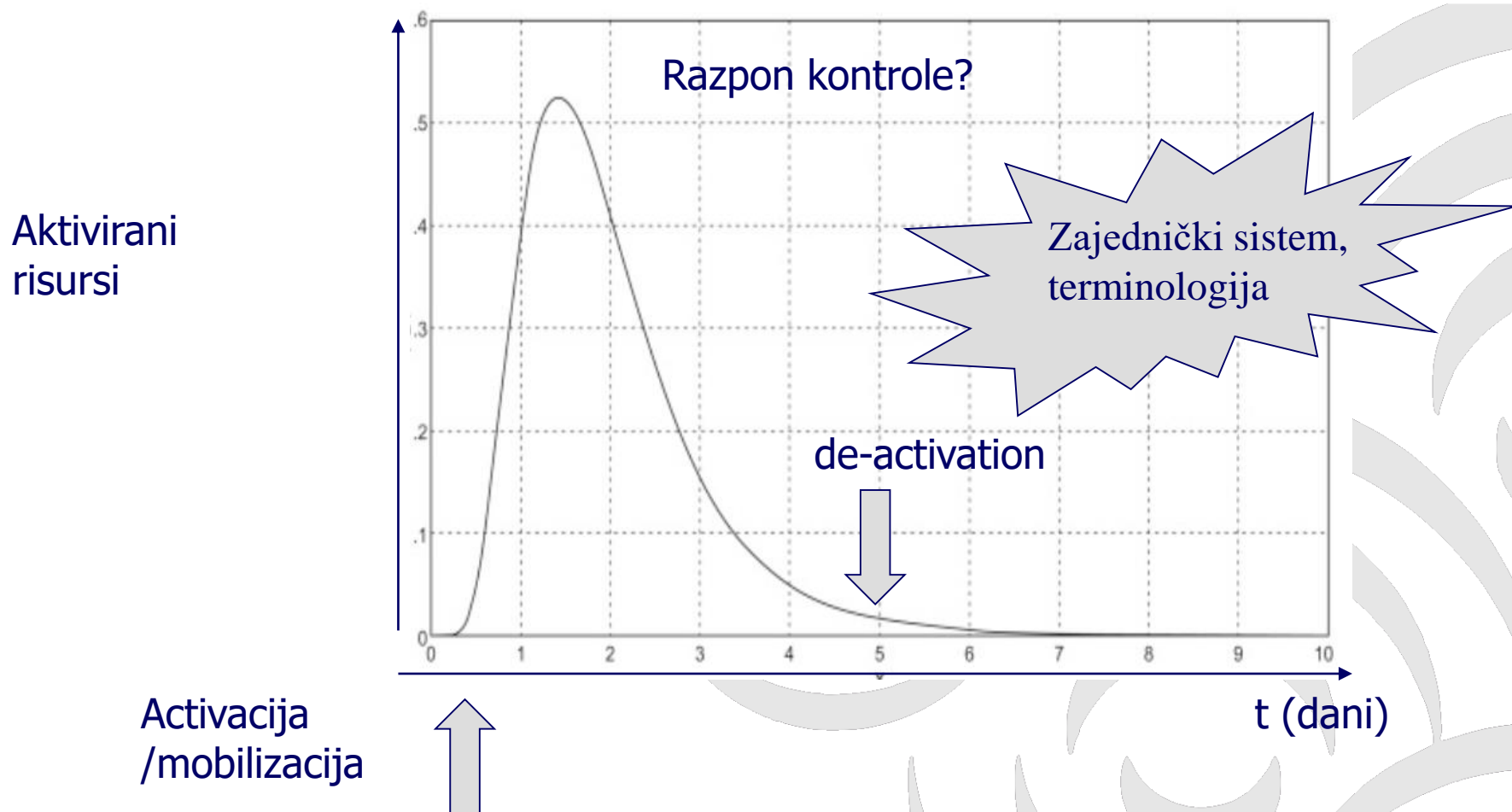
ICS uključuje procedure za odabir i formiranje privremenih hijerarhija upravljanja za kontrolu sredstava, osoblja, objekata, opreme i komunikacija. Osoblje se raspoređuje prema utvrđenim standardima i procedurama koje su prethodno sankcionisale vlasti koje učestvuju. ICS je sistem dizajniran za upotrebu ili primjenu od trenutka kada se incident dogodi pa sve dok više ne postoje zahtjevi za upravljanjem i operacijama.

ICS je interdisciplinaran i organizacijski fleksibilan da odgovori na sljedeće upravljačke izazove:

- Udovoljava potrebama jurisdikcije za suočavanje sa incidentima bilo koje vrste ili složenosti (tj. proširuje se ili ugovara po potrebi).
- Omogućava osoblju iz širokog spektra agencija da se brzo stopi u zajedničku upravljačku strukturu sa zajedničkom terminologijom.
- Pružita logističku i administrativnu podršku operativnom osoblju.
- Efikasan je i izbjegava dupliciranje napora i dodatnih troškova.
- Osigurava jedinstvenu, centralno ovlaštenu organizaciju za vanredne situacije.

Izzazov upravljanja vandrednih situacija:

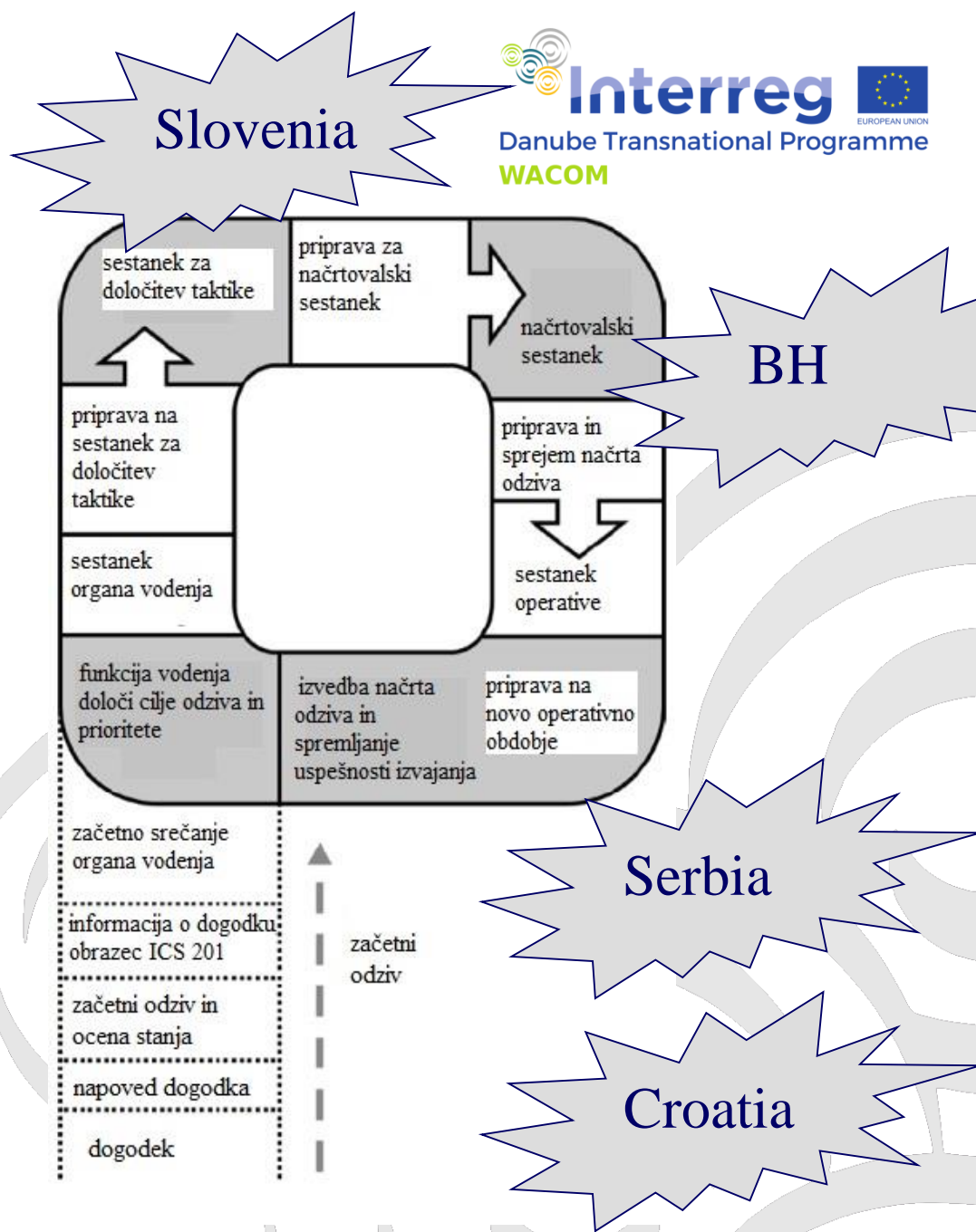
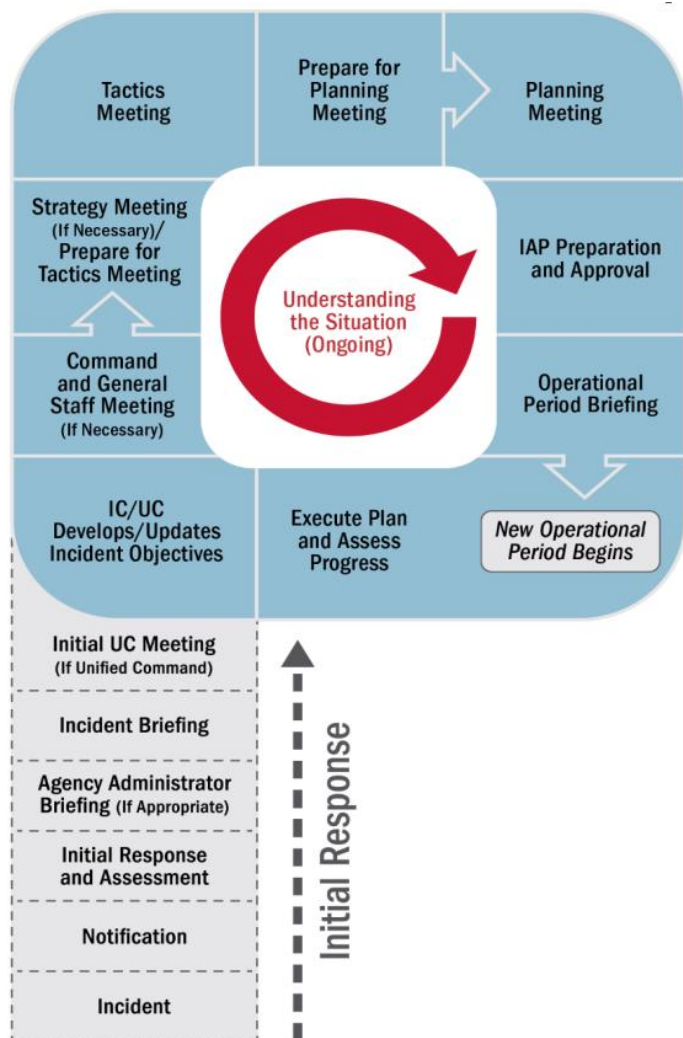
poznata LOG-NORMAL funkcija:



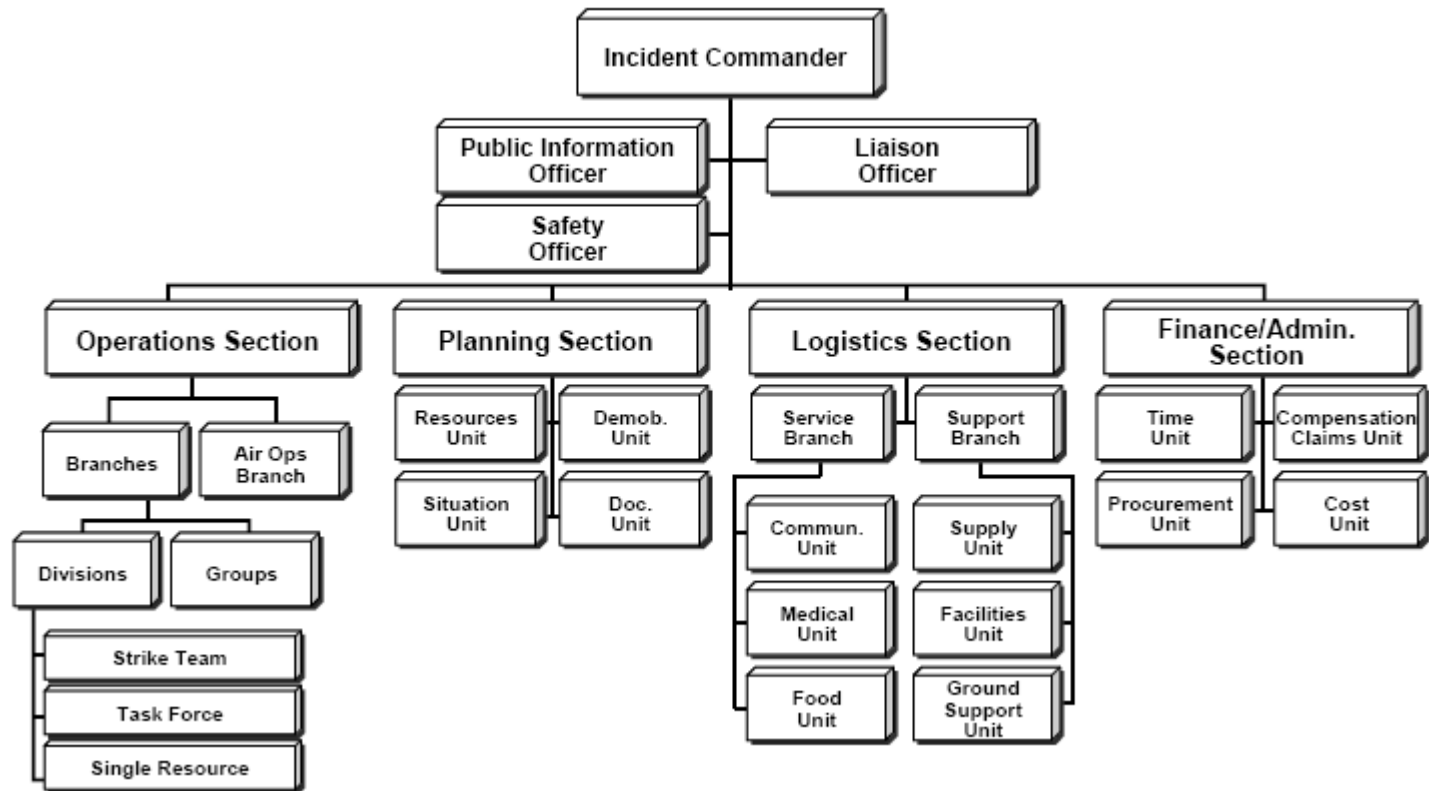
ciklus upravljanja katastrofama



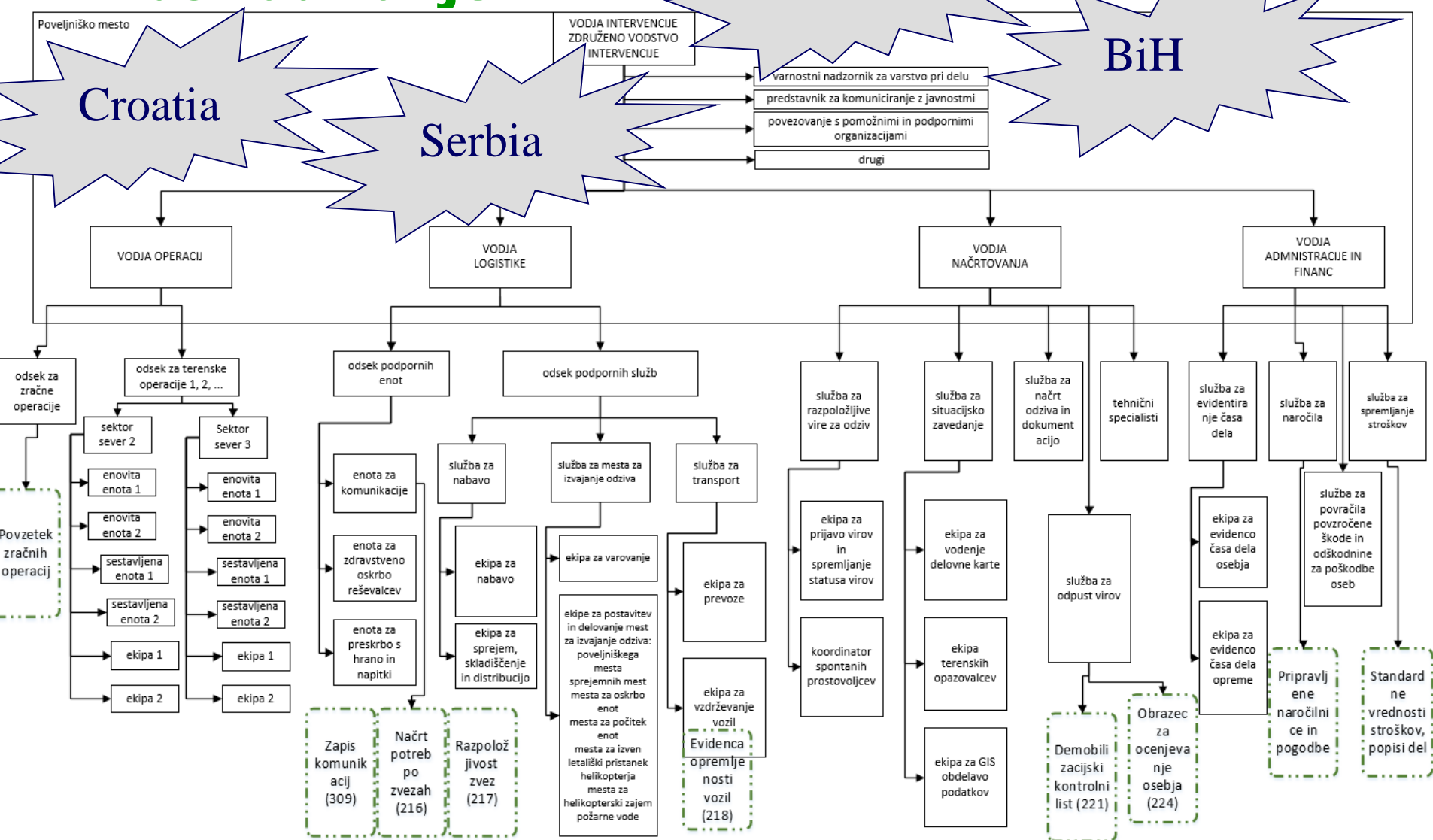
Planning „P” -



ICS / NIMS - integracija i usklađivanje - okosnica alata za koordinaciju nezgoda



ICS – integracija i usklađivanje



WACOM TOOLBOX i ICS

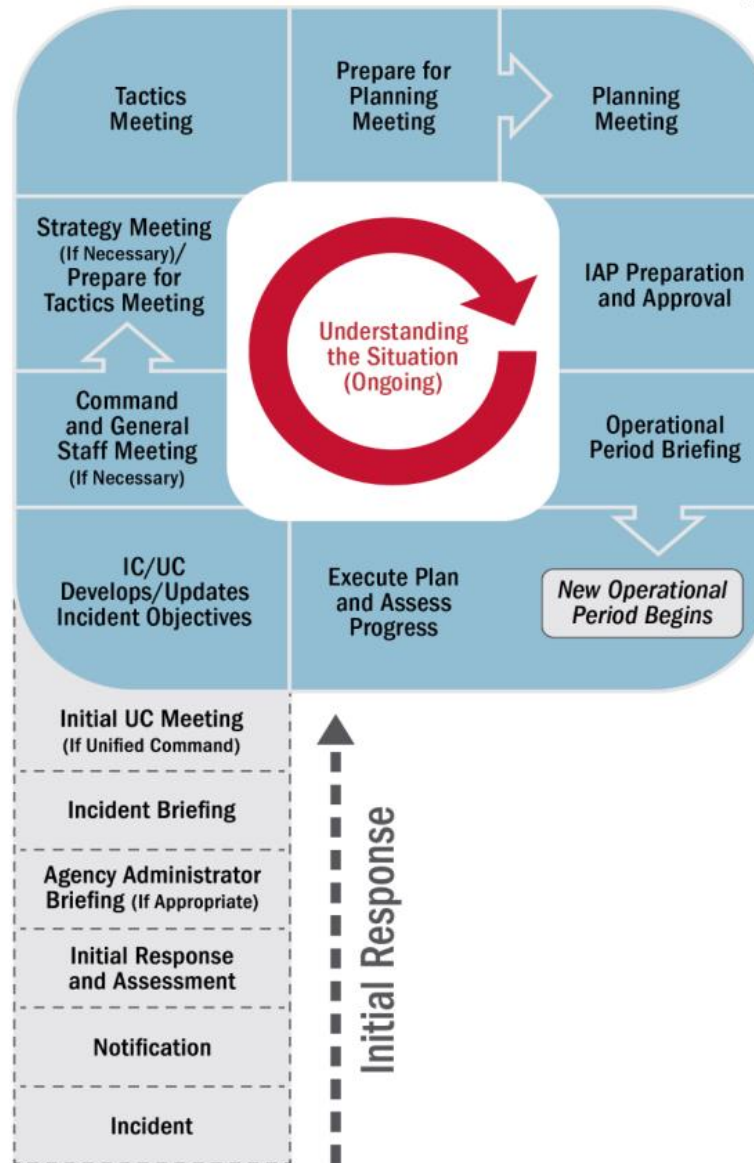
- Standardne definicije (terminologija, rječnik pojmova)
- Težnja prema kompatibilnosti sa ICS / NIMS sistemom - stoga cilja na minimalnu kompatibilnost između 4 nacionalna sistema za upravljanje incidentima i složenost njihovih struktura
- Povratne informacije - obrazovanje struktura u odnosu na definirane uloge u ICS-u
- Obraćanje samo ciljanim komponentama ICS-a (ne svim)
 - » Ko je ko? (207)
 - » Šta se dešava i prognoze za 24, 48 i 72 sati (209)
 - » Šta radimo sutra/danas „Incident action plan“
- Treningi

- Standardizirani komunikacijski sadržaji (obrasci ICS 201 do 235).
- Standardizovana struktura komunikacije - obavezna priprema, obavezna potvrda, obavezna primanja
- Omogućavanje i arhiviranja cijele komunikacije (dokumentacijske jedinice) za kasniju analizu događaja

KOMUNIKACIJA (svi obrazci)

ICS Form #:	Form Title:	Typically Prepared By:
ICS 201	Incident Briefing	Initial Incident Commander
ICS 202*	Incident Objectives	Planning Section Chief
ICS 203*	Organization Assignment List	Resources Unit Leader
ICS 204*	Assignment List	Resources Unit Leader and Operations Section Chief
ICS 205*	Incident Radio Communications Plan	Communications Unit Leader
ICS 205A	Communications List	Communications Unit Leader
ICS 206*	Medical Plan	Medical Unit Leader (reviewed by Safety Officer)
ICS 207	Incident Organization Chart	Resources Unit Leader
ICS 208**	Safety Message/Plan	Safety Officer
ICS 209	Incident Status Summary	Situation Unit Leader
ICS 210	Resource Status Change	Communications Unit Leader
ICS 211	Incident Check-In List	Resources Unit/Check-In Recorder
ICS 213	General Message (3-part form)	Any Message Originator
ICS 214	Activity Log	All Sections and Units
ICS 215	Operational Planning Worksheet	Operations Section Chief
ICS 215A	Incident Action Plan Safety Analysis	Safety Officer
ICS 216	Radio Requirement Worksheet	Communications Unit
ICS 217	Communications Resource Availability	Communications Unit
ICS 218	Support Vehicle/Equipment Inventory	Ground Support Unit
ICS 220**	Air Operations Summary Worksheet	Operations Section Chief or Air Branch Director
ICS 221	Demobilization Check-Out	Demobilization Unit Leader
ICS 224	Crew Performance Rating	Crew Supervisor
ICS 225	Incident Personnel Performance Rating	Supervisor
ICS 230	Daily Meeting Schedule	Situation Unit Leader
ICS 232	Resources at Risk Summary	Environmental Specialist/Unit Leader
ICS 233	Incident Open Action Tracker	Planning Section Chief
ICS 234	Work Analysis Matrix	Operations/Planning Section Chiefs
ICS 309	Communications Log	Communication Unit

KOMUNIKACIJA



OBRAZCI (201-309)

se mogu
strukturirati prema
vremenu u 24
satnom ciklu odziva
na katastrofu

 **Interreg** 
Danube Transnational Programme
WACOM

```

graph TD
    IC[Incident Commander] --> PIO[Public Information Officer]
    IC --> LO[Liaison Officer]
    IC --> SO[Safety Officer]
    IC --> OS[Operations Section]
    IC --> PS[Planning Section]
    IC --> LS[Logistics Section]
    IC --> FAS[Finance/Admin. Section]

    OS --> B[Branches]
    OS --> AOB[As Yet Unassigned Branch]
    OS --> C[Crusade]
    OS --> G[Groups]
    OS --> ST[Strike Team]
    OS --> TRF[Task Force]
    OS --> SR[Single Resource]

    PS --> RU[Resources Unit]
    PS --> DU[Data Unit]
    PS --> SIU[Situation Unit]
    PS --> DCU[Data Unit]

    LS --> SB[Service Branch]
    LS --> SUP[Support Branch]
    LS --> CU[Communications Unit]
    LS --> MU[Medical Unit]
    LS --> FU[Food Unit]
    LS --> BU[Supply Unit]
    LS --> F[Facilities Unit]
    LS --> SRU[Special Support Unit]

    FAS --> TU[Time Unit]
    FAS --> CSU[Compensation/Expense Unit]
    FAS --> PSU[Procurement Unit]
    FAS --> CU[Cost Unit]
  
```

The organizational chart for the Incident Command System (ICS) is structured as follows:

- Incident Commander**
 - Public Information Officer**
 - Liaison Officer**
 - Safety Officer**
 - Operations Section**
 - Branches
 - As Yet Unassigned Branch
 - Crusade
 - Groups
 - Strike Team
 - Task Force
 - Single Resource
 - Planning Section**
 - Resources Unit
 - Data Unit
 - Situation Unit
 - Data Unit
 - Logistics Section**
 - Service Branch
 - Support Branch
 - Communications Unit
 - Medical Unit
 - Food Unit
 - Supply Unit
 - Facilities Unit
 - Special Support Unit
 - Finance/Admin. Section**
 - Time Unit
 - Compensation/Expense Unit
 - Procurement Unit
 - Cost Unit



20

COMMUNICATION (forms preparation, distribution)

ICS 208
Safety Message/Plan

ICS 209
Incident Status Summary



Important for the WACOM project, vertical reporting (bottom up) and integration – status (accidental pollution, floods and forecast – especially resource requirements)

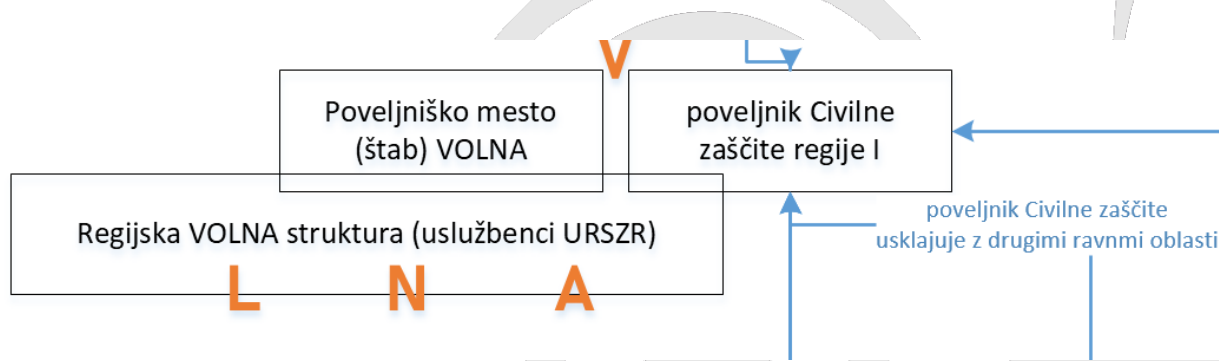
Purpose. The ICS 209 is used for reporting information on significant incidents. It is not intended for every incident, as most incidents are of short duration and do not require scarce resources, significant mutual aid, or additional support and attention. The ICS 209 contains basic information elements needed to support decision-making at all levels above the incident to support the incident. Decision makers may include the agency having jurisdiction, but also all multiagency coordination system (MACS) elements and parties, such as cooperating and assisting agencies/organizations, dispatch centers, emergency operations centers, administrators, elected officials, and local, County, Provincial, and Federal agencies. Once ICS 209 information has been submitted from the incident, decision makers and others at all incident support and coordination points may transmit and share the information (based on its sensitivity and appropriateness) for access and use at local, regional, provincial, and national levels as it is needed to facilitate support.

Accurate and timely completion of the ICS 209 is necessary to identify appropriate resource needs, determine allocation of limited resources when multiple incidents occur, and secure additional capability when there are limited resources due to constraints of time, distance, or other factors. The information included on the ICS 209 influences the priority of the incident, and thus its share of available resources and incident support.

The ICS 209 is designed to provide a “snapshot in time” to effectively move incident decision support information where it is needed. It should contain the most accurate and up-to-date information available at the time it is prepared. However, readers of the ICS 209 may have access to more up-to-date or real-time information in reference to certain information elements on the ICS 209. Coordination among communications and information management elements within ICS and among MACS should delineate authoritative sources for more up-to-date and/or real-time information when ICS 209 information becomes outdated in a quickly evolving incident.

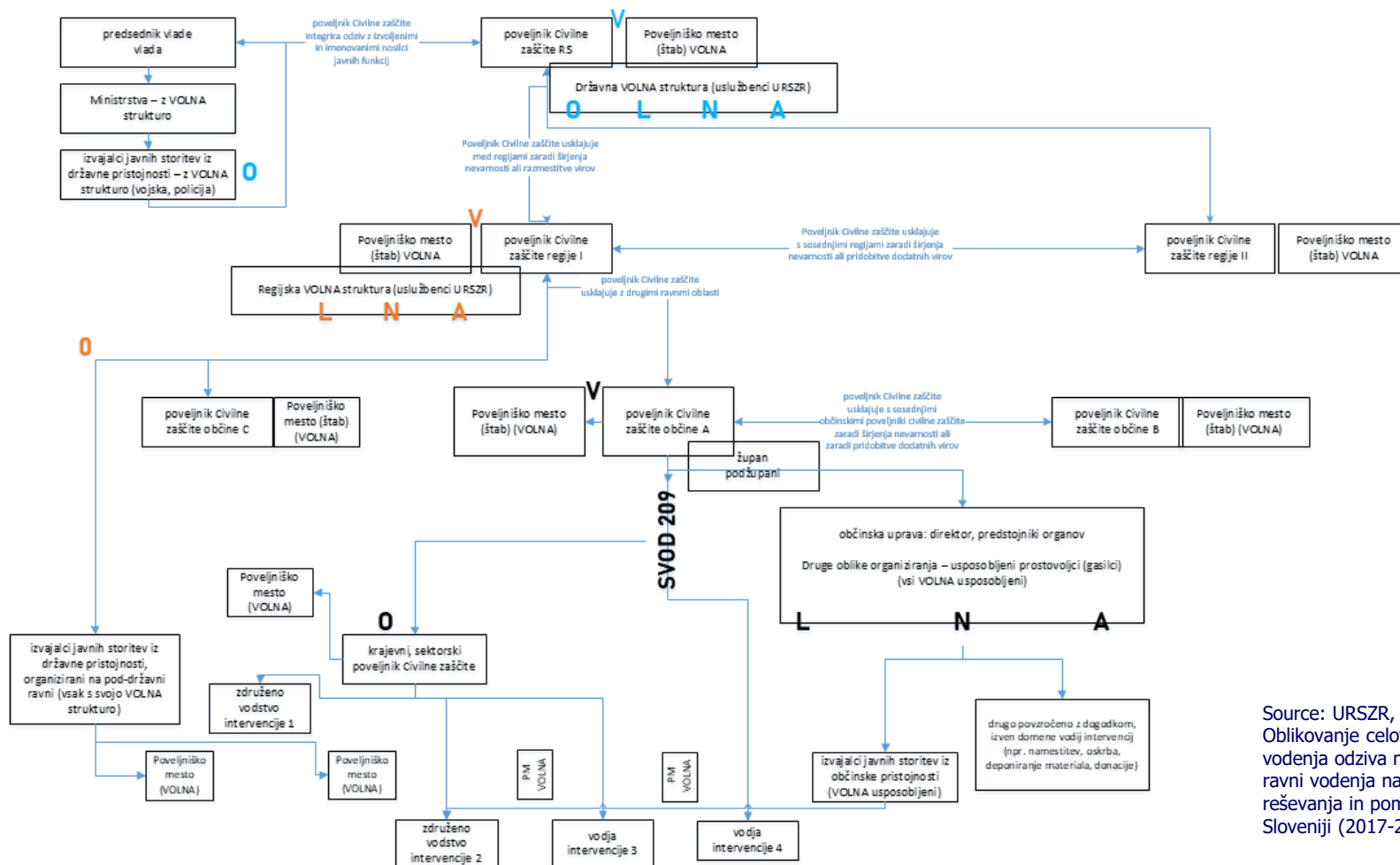
PRILAGODBA nacionalnim zahtjevima (Slovenija)

- Incident Command System → Sistem Vodenja ODziva (ICS → SVOD)
- Incident Command – Operations – Logistics – Planning – Administration → VOLNA Vodenje, Operativa, Logistika, Načrtovanje, Administracija.



PRILAGOĐAVANJE nacionalnim zahtjevima (Slovenija) - puna skala

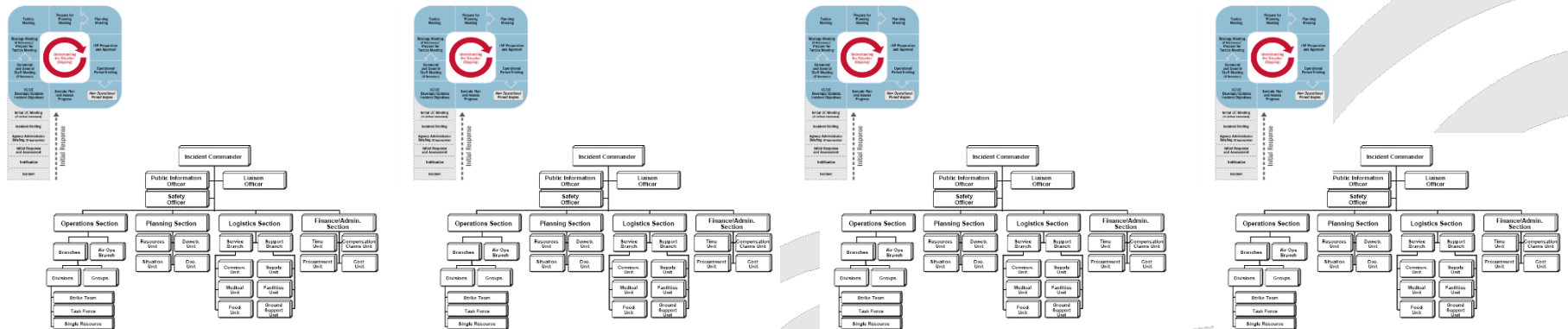
SVOD – model vertikalnega komunikacijskega toka



Source: URSZR, Banovec P. : Oblikovanje celovitega modela vodenja odziva na nesreče za vse ravni vodenja na področju zaštite, reševanja in pomoči v Republiki Sloveniji (2017-2019)

Put naprijed - od WPT1 - definiranje koncepta integracije do WP2

Sljedeći korak - detaljna definicija modula i koncepti integracije



Zajedničko razumijevanje struktura i procedura u sve 4 zemlje - podržano u alatu WACOM

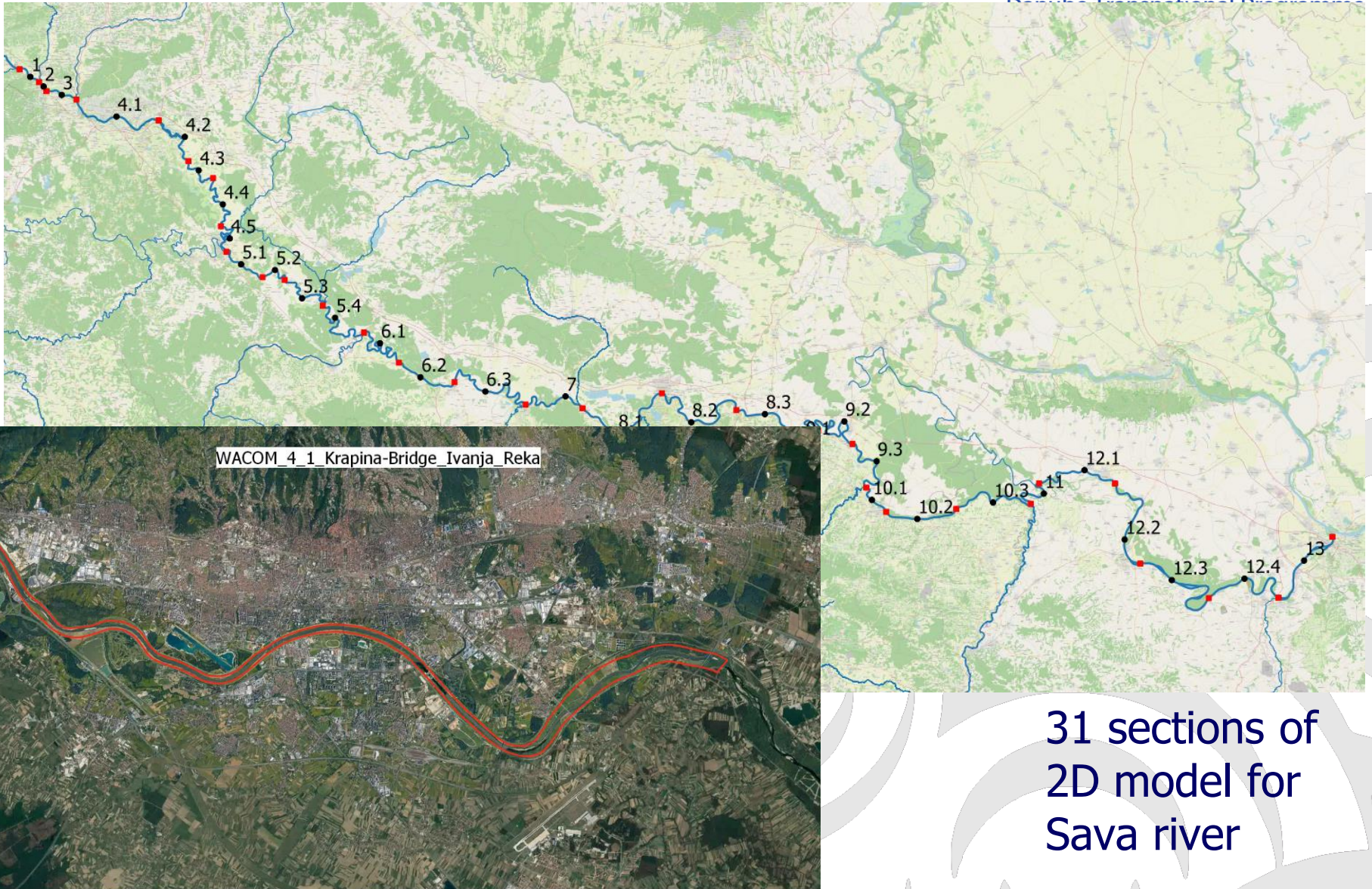
INTEGRATED TOOLBOX

Koordinacija incidenata
Alat (ICS organizaciona
šema ICS obrazac 207)



Alat za modeliranje
nezgoda (djelomično ICS
215 - radni list
operativnog planiranja)

Alat za informisanje o
situaciji (ICS obrazac 209)





River reach number	Model section	model ID
1	from Čatež to confluence with Sutla	1
2	from confluence with Sutla to confluence with Bregana	2
3	from confluence with Bregana to confluence with Krapina	3
	from confluence with Krapina to highway bridge at Ivanja Reka	4
	from bridge at Ivanja Reka to ferry line between Oborovo and Vrbovo	5
4	from ferry line between Oborovo and Vrbovo to ferry line between Desni Dubrovčak and Lijevi Dubrovčak	6
	from ferry line between Desni Dubrovčak and Lijevi Dubrovčak to ferry line at Tišina	7
	from ferry line at Tišina to confluence with Kupa	8
	from confluence with Kupa to ferry line at Gradusa Posavska	9
5	from ferry line at Gradusa Posavska to ferry line at Selišće Sunjsko	10
	from ferry line at Selišće Sunjsko to Lonsko polje	11
	from Lonsko polje to confluence with Una	12
	from confluence with Una to Orahova	13
6	from Orahovo to Gradiška	14
	from Gradiška to confluence with Vrbas	15
7	from confluence with Vrbas to confluence with Orłjava	16
	from confluence with Orłjava to Brod	17
8	from Brod to Donji Svilaj	18
	from Donji Svilaj to confluence with Bosna	19
	from confluence with Bosna to Domaljevac	20
9	from Domaljevac to Orašje	21
	from Orašje to confluence with Tinja	22
	from confluence with Tinja to Brčko	23
10	from Brčko to ferry line at Jamena	24
	from ferry line at Jamena to confluence with Drina	25
11	from confluence with Drina to confluence with Bosut	26
	from confluence with Bosut to Sremska Mitrovica	27
12	from Sremska Mitrovica to Šabac	28
	from Šabac to TPP Nikola Tesla	29
	from TPP Nikola Tesla to confluence with Kolubara	30
13	from confluence with Kolubara to Beograd	31

WACOM – ICS - zaključci

Incident command system – (Sistem Vodenja ODziva - SVOD)

- Standardizirani je model rada i komunikacije
- Primjenjuje se u svakoj instituciji koja je aktivna u bilo kojem složenom okviru za planiranje / reagovanje
- Kako posmatrate implementaciju ICS modela odziva na nesreću i rukovođenja nesrećom za vašu realnost i vašoj instituciji
- Postojeće strukture i procesi u institucijama obično odgovaraju ICS modelu, ali zahtijevaju određena udruživanja

Diskusija za rad u grupama:

207

209

IAP

Discussion

