

ScanDiesel



Ihr Partner für Motoren und Komponenten



JCB - Nanni - AGCO
Scania Stage V
inland waterway
IWP/IWA
solution by
ScanDiesel

Facts

- EU Stage V Regulation (EU) 2016/1628 was introduced 01.01.2019.
- For inland waterway solution „new building and retrofit“ this means that IWA/IWP type approvals are necessary for diesel engines.
- Our partners JCB and Nanni developed and certified some solution for power output between 60kVA and 135kVA IWA type approved engines without exhaust aftertreatment system.
- Our partner Scania decided not to do the development to certify IWA/IWP engines for the complete power range. This decision was made up to the limited volume to sell this engines and high costs of development and certification.

Facts

As solution partner for Scania Power Solutions ScanDiesel got the permission to marinise EU Stage V NRE engines according to ES-TRIN and CESNI rules for the European market sale.



Details

- ScanDiesel updated documentation according:
 - technical data handbook
 - installation manual
 - spare parts catalogue „Scania modular system valid“
 - 3D step file availability
- Maintenance worldwide as ONE man service concept
- Reduce maintenance costs
- Reduce downtime
- High efficiency



Details

- Type approval EU Stage V is valid
- Technical report proofed by authorities according CESNI rules from ScanDiesel is available
- Engine manufacturer Scania Power Solutions
- Full warranty 12/24 is valid, based on Scania Power Solutions
- Scania engine service worldwide based on Scania Power Solutions „IT-System“

European Service Network,
more than 1000 service points



Details



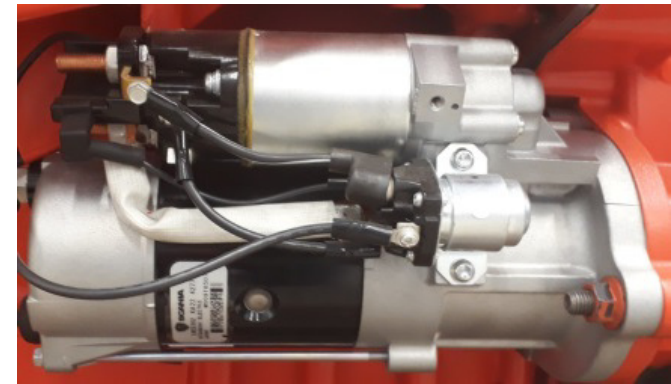
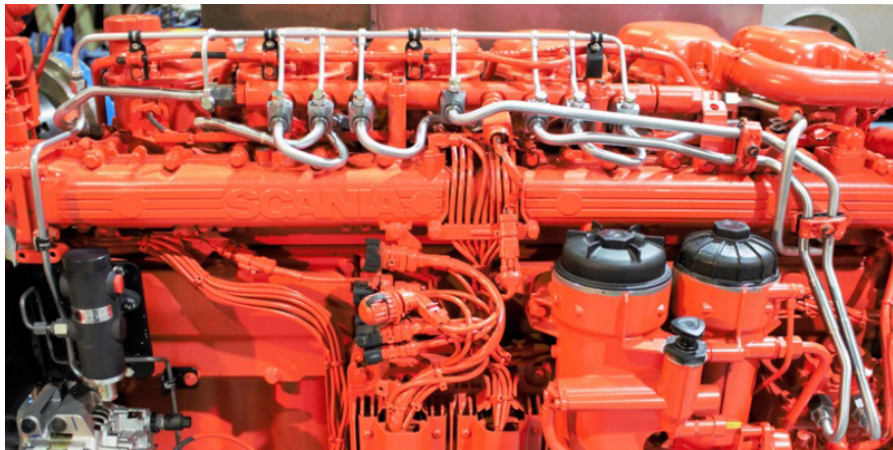
Scania original
part solutions



Scania heat exchanger
for keel cooling solution

Details

Double walled injection piping

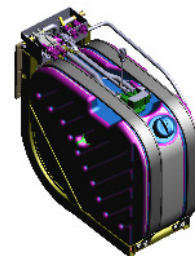
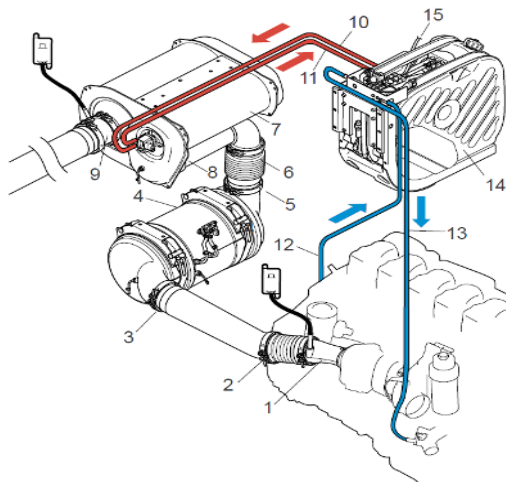
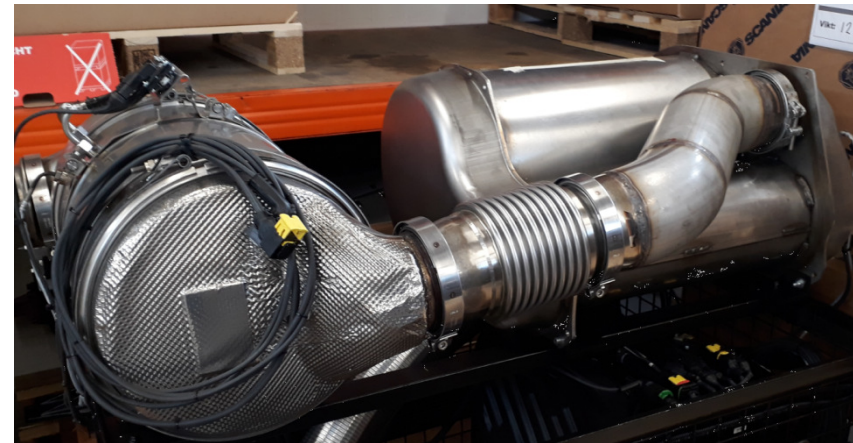


Scania
2-Pole
Starter
Alternator
Seewater
pump



Details

Insulation



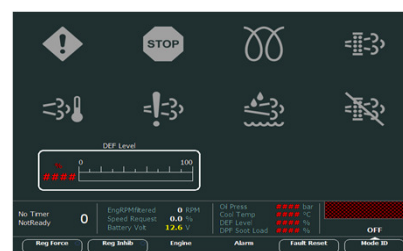
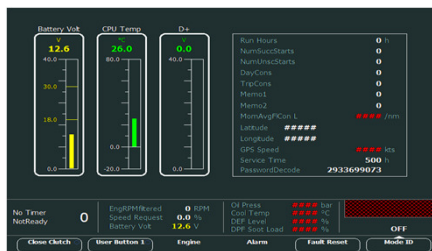
Scania original exhaust aftertreatment equipment loose delivered as a kit for flexible mounting including flanges, bellows, cabling

Equipment



Engine monitoring from ComAp IV5 – IV8 or high end touch screen IV12? Choose your setup! Fully programmed as plug and play solution from ScanDiesel

Engine monitoring – Statistics – Emission choose your view



EU Stage V inland waterway propulsion

EU Stage V NRE marinised - Produktrange Scania Allspeed (Propulsion) - e-drive										
Manufacturer	Engine type	Emission	Displacement Cylinder	Power kW	Drehmoment max. Nm	rpm max.	Exhaus aftertreatment	Application	Info	Available
Scania	DC09 310/311A	EU V	9,3l / 5	202	1.607	1800	Component system DOC-DPF-SCR	Propulsion and diesel-el. Propulsion	Data and technical information on request	Q4 2020
Scania	DC09 310/311A	EU V	9,3l / 5	240	1.846	1800				Q4 2020
Scania	DC09 312A	EU V	9,3l / 5	202	1.607	2100				Q4 2020
Scania	DC09 312A	EU V	9,3l / 5	232	1.653	2100				Q4 2020
Scania	DC09 313A	EU V	9,3l / 5	257	1.753	2100				Q4 2020
Scania	DC09 313A	EU V	9,3l / 5	276	1.876	2100				Q4 2020
Scania	DC09 313A	EU V	9,3l / 5	294	1.876	2100				Q4 2020
Scania	DC13 310/311A	EU V	12,7l / 6	257	2.196	1800	Component system DOC-DPF-SCR	Propulsion and diesel-el. Propulsion	Data and technical information on request	Q3 2020
Scania	DC13 310/311A	EU V	12,7l / 6	294	2.252	1800				Q3 2020
Scania	Dc13 312A	EU V	12,7 / 6	294	2.116	2100				Q3 2020
Scania	DC13 312A	EU V	12,7l / 6	331	2.189	2100				Q3 2020
Scania	DC13 313A	EU V	12,7l / 6	368	2.476	2100				Q3 2020
Scania	DC13 313A	EU V	12,7l / 6	405	2.476	2100				Q3 2020
Scania	DC16 313A	EU V	16,4l / V8	405	2.865	2100	Component system DOC-DPF-SCR	Propulsion and diesel-el. Propulsion	Data and technical information on request	Q4 2020
Scania	DC16 313A	EU V	16,4l / V8	450	2.944	2100				Q4 2020
Scania	DC16 314A	EU V	16,4l / V8	478	3.104	1900	Compact system DOC-DPF-SCR	Propulsion	Data and technical information on request	Q4 2020
Scania	DC16 314A	EU V	16,4l / V8	522	3.183	1900				Q4 2020

EU Stage V inland waterway auxiliary

EU Stage V Produktrange Singlespeed (Auxiliary) - e-drive										
Manufacturer	Engine type	Emission	Displacement Cylinder	Power kW/Nm	kVA	rpm	Exhaust aftertreatment	Application	Info	Available
Scania	DC09 320A	EU V - NRE marinised	9,3l / R5	223/1.420	250	1500 / 50 Hz	Component system DOC-DPF-SCR	Auxiliary + diesel-el.	Data and technical information on request	Q4 2020
Scania	DC09 320A	EU V - NRE marinised	9,3l / R5	265/1.687	300	1500 / 50 Hz				
Scania	DC13 320A	EU V - NRE marinised	12,7l / R6	311/1.980	350	1500 / 50 Hz	Component system DOC-DPF-SCR	Auxiliary + diesel-el.	Data and technical information on request	Q3 2020
Scania	DC13 320A	EU V - NRE marinised	12,7l / R6	354/2.254	400	1500 / 50 Hz				
Scania	DC13 320A	EU V - NRE marinised	12,7l / R6	397/2.527	450	1500 / 50 Hz	Compact system DOC-DPF-SCR	Auxiliary + diesel-el.	Data and technical information on request	Q4 2020
Scania	DC16 320A	EU V - NRE marinised	16,4l / V8	439/2.795	500	1500 / 50 Hz				
Scania	DC16 320A	EU V - NRE marinised	16,4l / V8	481/3.062	550	1500 / 50 Hz	Without	Auxiliary	Data and technical information on request	Q2 2020
JCB	448 TGWA 60	EU Stage V IWA	4,8l / R4	56	64	1500 / 50 Hz				
JCB	448 TGWA 72	EU Stage V IWA	4,8l / R4	68,5	78	1500 / 50 Hz	Without	Auxiliary	Data and technical information on request	Q2 2020
Nanni	QLS 70T KC	EU Stage V IWA	4,5l / 4R	61	X	1500 / 50 Hz				
Nanni	QLS 135T KC	EU Stage V IWA	6,8l / 6R	117	X	1500 / 50 Hz	Without	Auxiliary	Data and technical information on request	Q2 2020
Mitsubishi	S3L2-Z562SD	EU V - NRE marinised	1,3l / 4R	9,9	X	1485				
Mitsubishi	S4L2-Z562SD	EU V - NRE marinised	1,8l / 4R	14,6	X	1485				
Mitsubishi	S4L2-Z5T61SD	EU V - NRE marinised	1,8l / 4R	18,4	X	1500 / 50 Hz	Without		Data and technical information on request	Q2 2020

Please call for our flyer – Your welcome

THANK YOU - Contact information

ScanDiesel GmbH – motoren@scandiesel.de
Solution Partner for Marine Stage V business and more.....
Interest in Hybrid solutions?



www.scandiesel.de

Kontakt

ScanDiesel GmbH

Ermlandstraße 59

28777 Bremen

Telefon: +49 421 67532-0

Fax: +49 421 67532-20

E-Mail: info@scandiesel.de