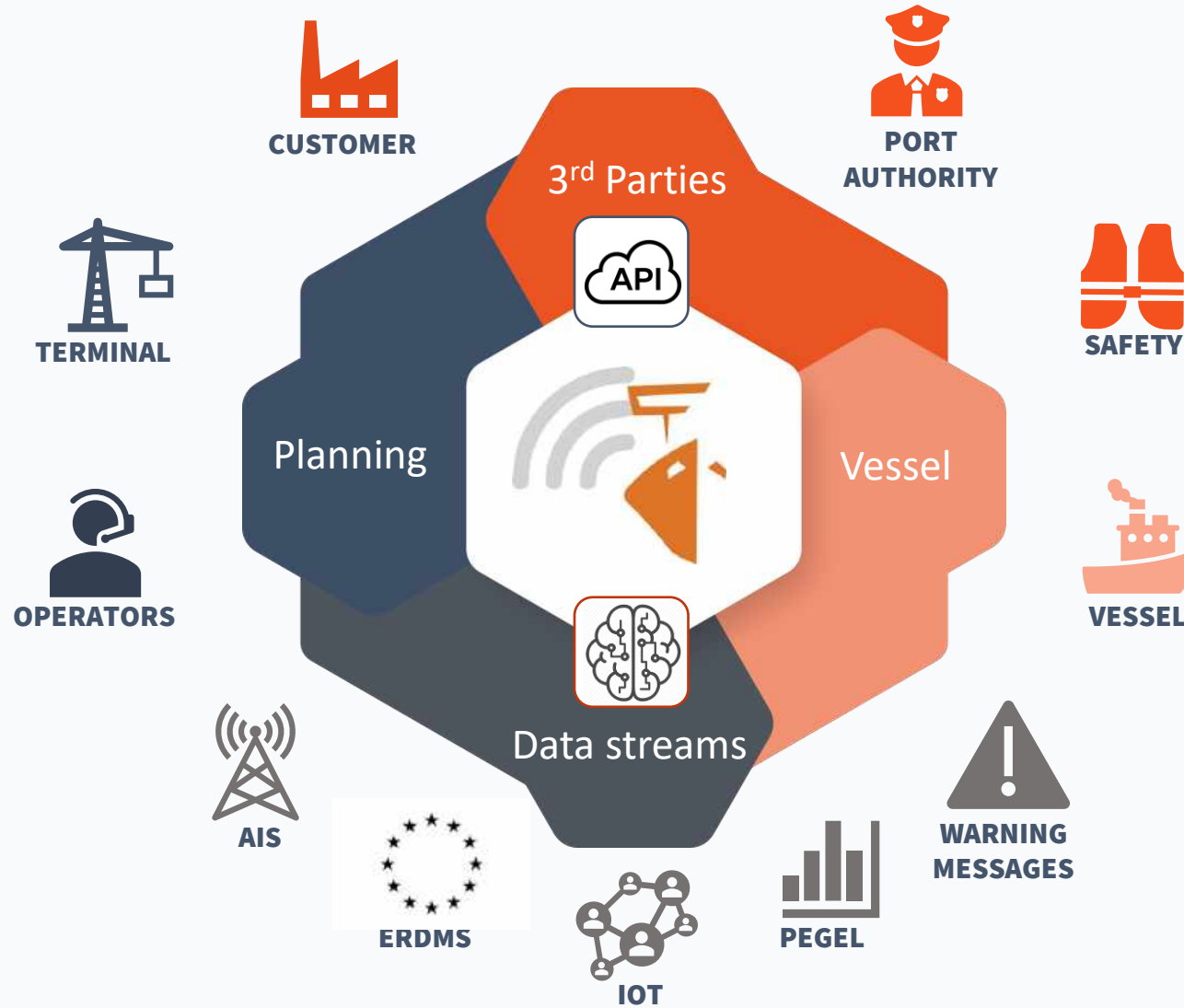




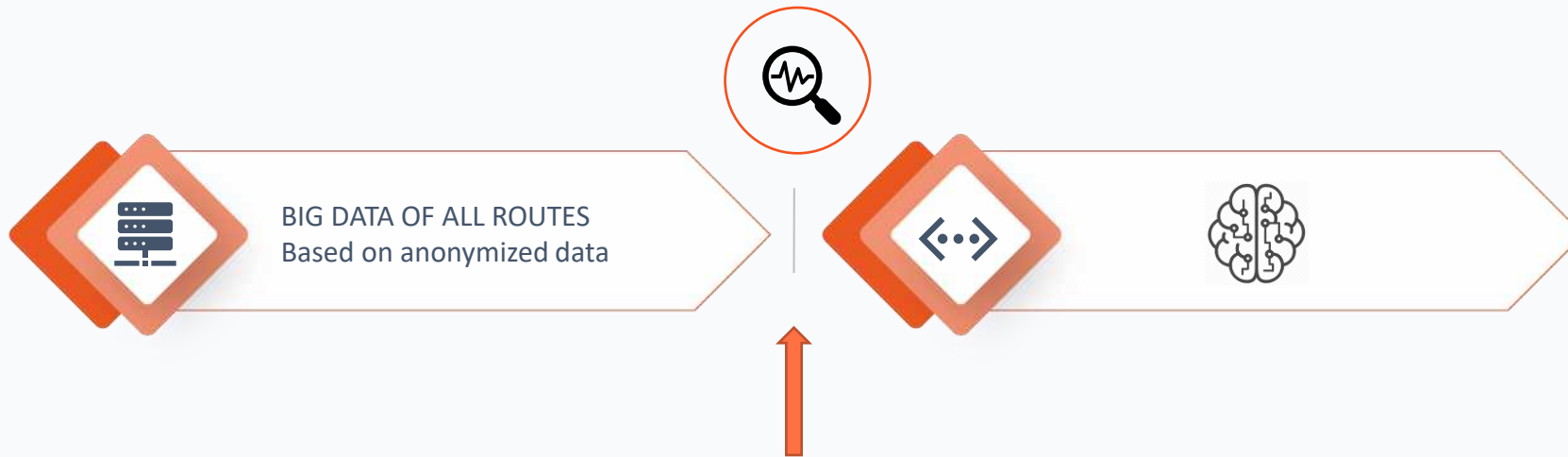
Ecosystem



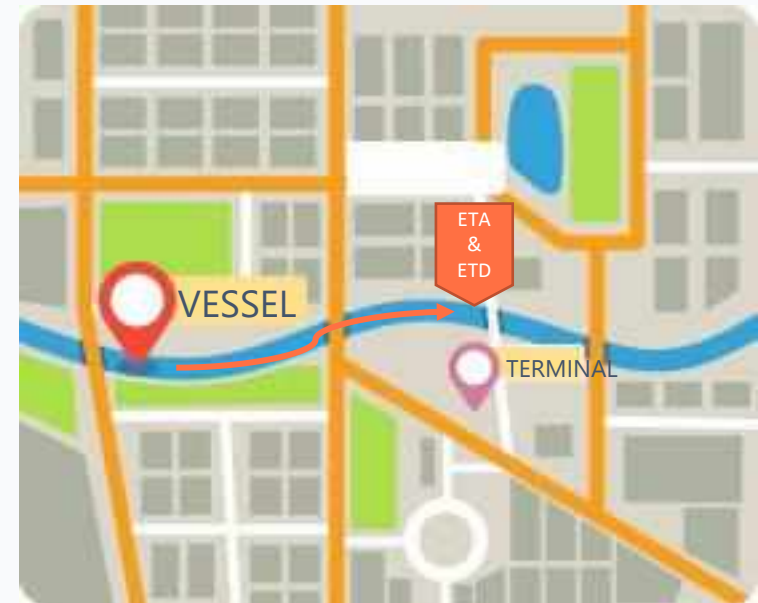
How does the A.I. work?



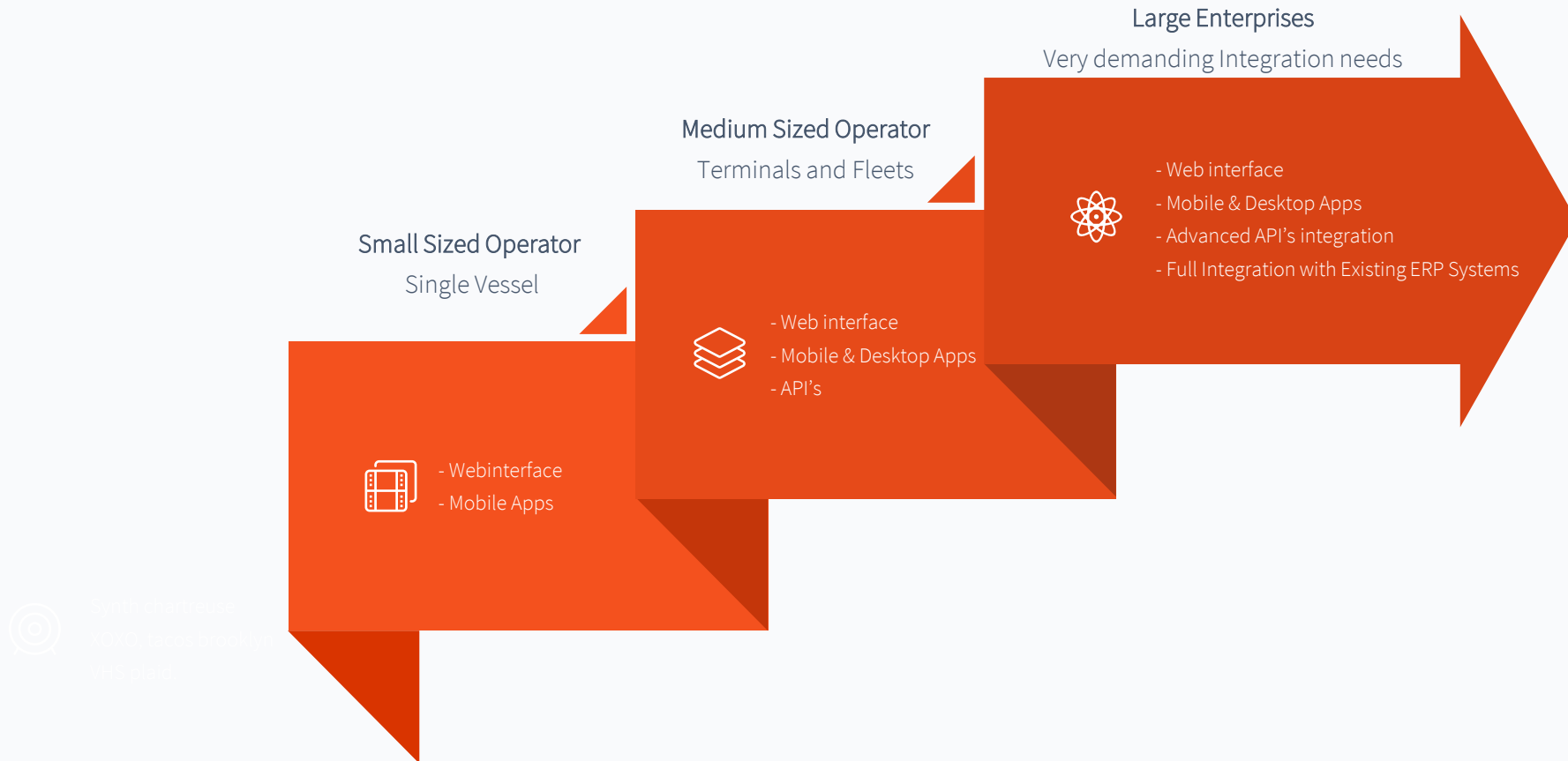
ENRICHED WITH REALTIME CONGESTION, WAITING TIMES ETC...



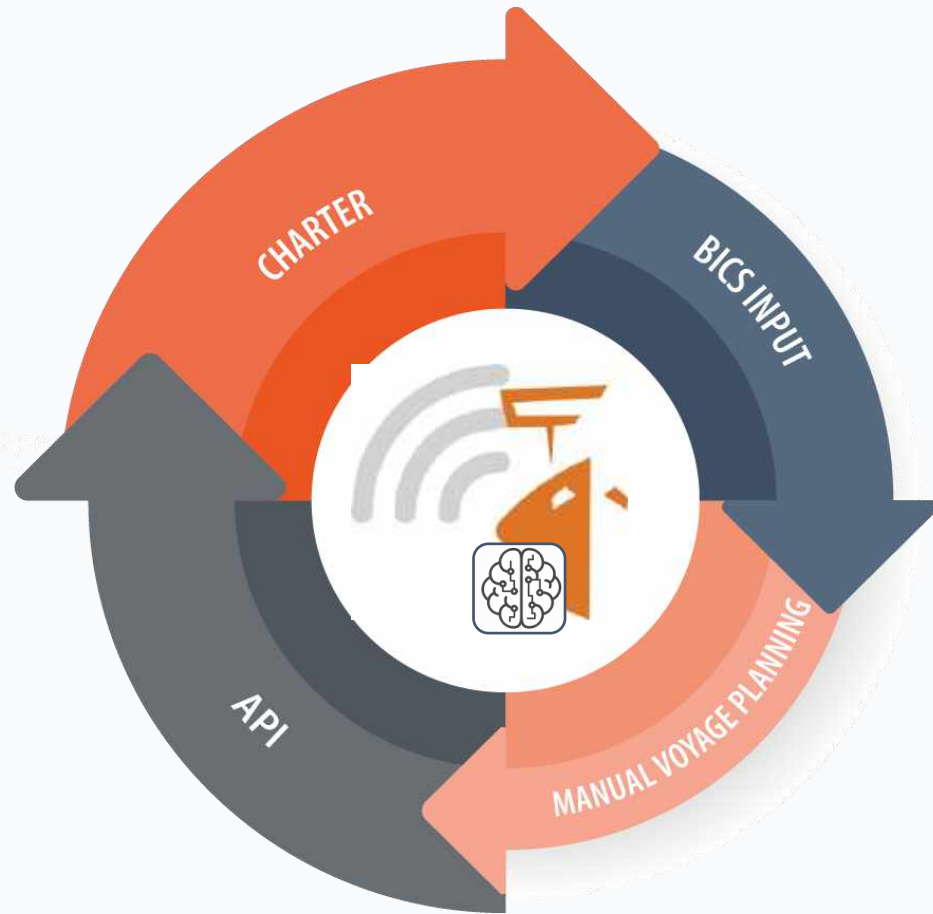
CONSTANTLY COMPARED WITH PLANNING OF THE STAKEHOLDERS



◎ Maturity Level Adaptation & API's



📍 Barge Operator / Agent



- ✓ Smart Contracting for Charter
- ✓ Support for bulk inputs format and API
- ✓ Run simulation on voyage and planning
- ✓ Follow-up on voyage progress
- ✓ Share Track & Trace with end-customer
- ✓ Collect all required documents
- ✓ KPI's and advanced reporting

📍 Barge Operator/Agent



The screenshot shows a complex web form for adding a charter. It is organized into several sections:

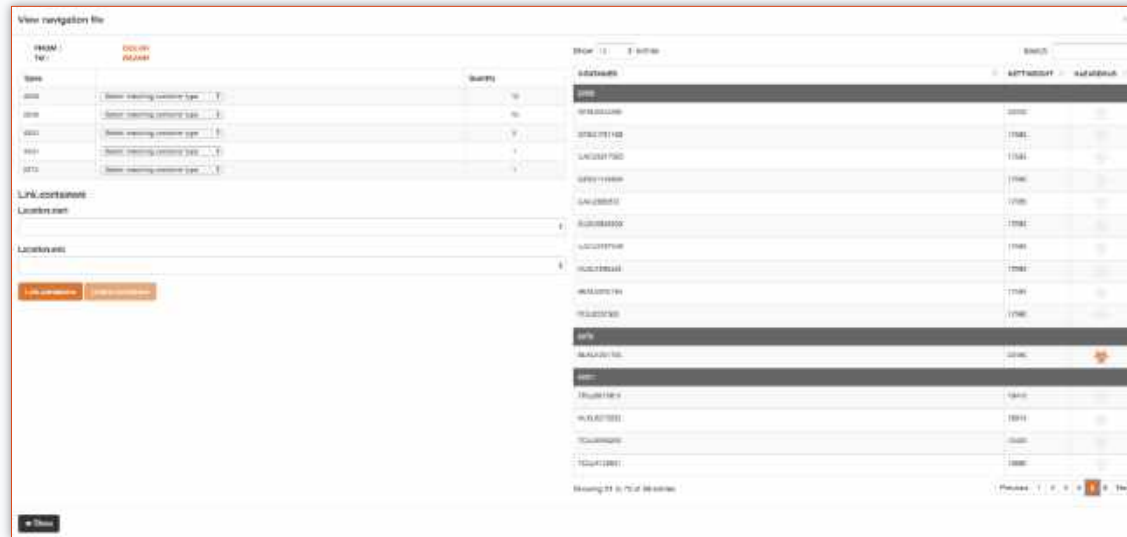
- General:** Includes fields for 'Vessel', 'Subarea', 'Charter state', 'Description', 'Sub type', 'Total tonnage', and 'Risk of Vessel'.
- Requirements:** A section for specifying charter requirements.
- Rate:** Includes fields for 'Planned type', 'Estimate', 'Accession value', and 'Barge group'.
- Terminals:** A section with two terminal entries. Each entry includes fields for 'Terminal', 'Planned date', 'Storage', 'Action window (H)', 'Writing compensation', 'Remarks', and 'Estimated duration'.

Navigation buttons for 'Back' and 'Close' are visible at the bottom of the form.

Smart Contracting for Charter

- ✓ Actual arrival time / demurrage is recorded
- ✓ 'Pegel' level (on departure) is recorded

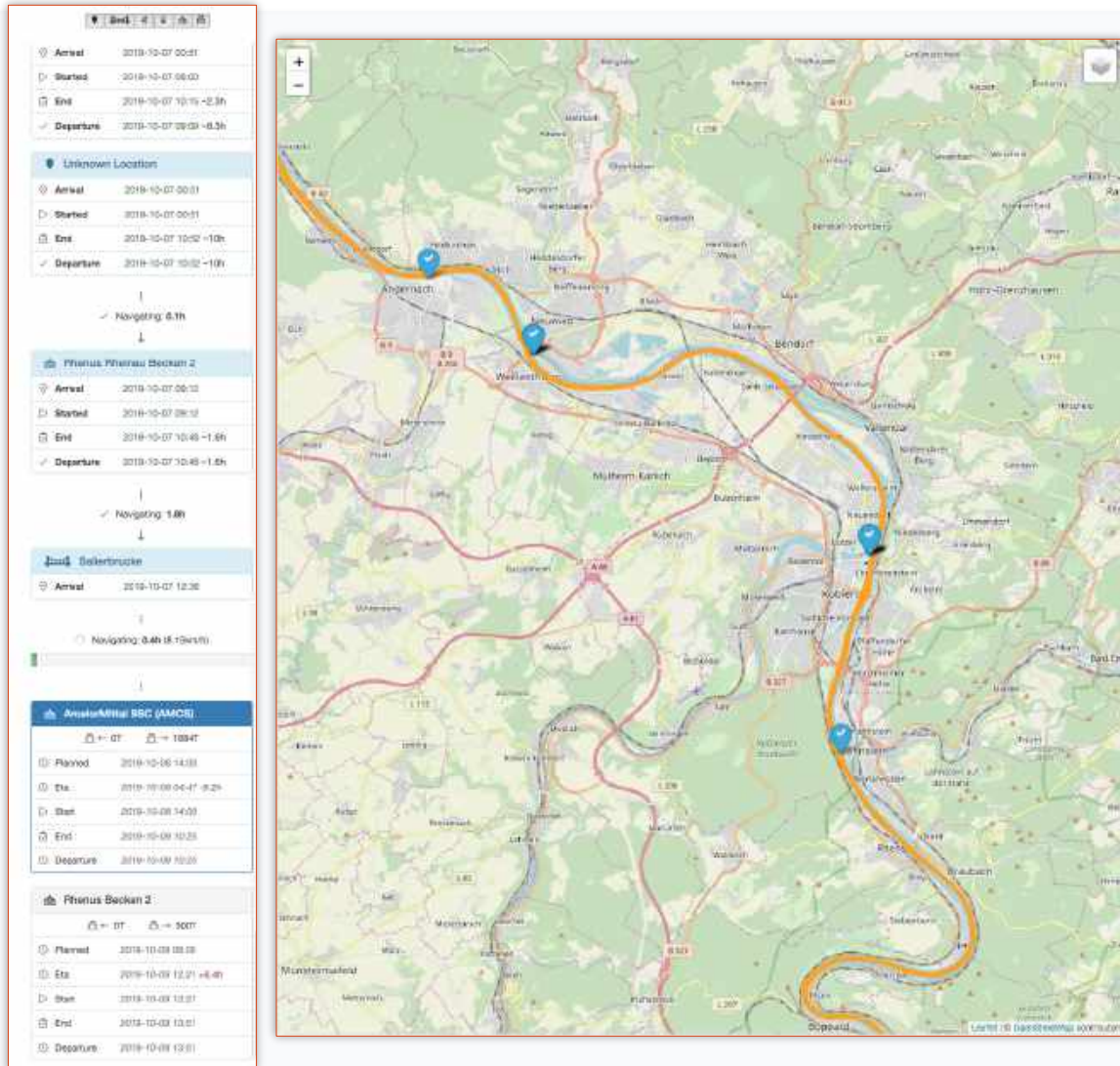
📍 Barge Operator/Agent



Support for bulk input formats and API

- ✔ Support for various types of import formats like BICS, XML, ...
- ✔ Translates into standard planning objects and transactions

📍 Barge Operator/Agent



Run Simulation on voyage and planning

- ✓ Feasibility is calculated. Keeping into account waiting times at locks, terminals and average vessel speeds on that trajectory as well as the current operation mode of the vessel (A1, A2, B).
- ✓ Trajectories are calculated based upon anonymized big data. Each checkpoint, bridge, lock, junction, ... has its own set of parameters

📍 Barge Operator/Agent



State	Date	Page	State	Location	Ref	Waiting	Arrive	Wait	Sea	Shipping
2017	2017-01-01	1	Transit	Port of Rotterdam	1234	10:00	10:30	11:00	11:30	12:00
2017	2017-01-02	2	Transit	Port of Rotterdam	1234	10:00	10:30	11:00	11:30	12:00
2017	2017-01-03	3	Transit	Port of Rotterdam	1234	10:00	10:30	11:00	11:30	12:00



Follow-up on voyage progress

- ✓ Upon creation of a charter, feasibility is calculated. Every 60 seconds the data are processed again and ETA's updated. Generating notifications if the change threatens to have an operational impact
- ✓ An overview of all charters / Voyages is available in real-time, including updates when vessels arrive / leave / are delayed etc. The overview also show uploaded required documents like loading certificate, cleaning, container stow plan etc ...

📍 Barge Operator/Agent



Share track & trace with end-customer

- ✔ A unique track & trace code can be generated and shared with 3rd parties like end-customer so they can follow the vessel progress and ETA's

Please confirm to continue

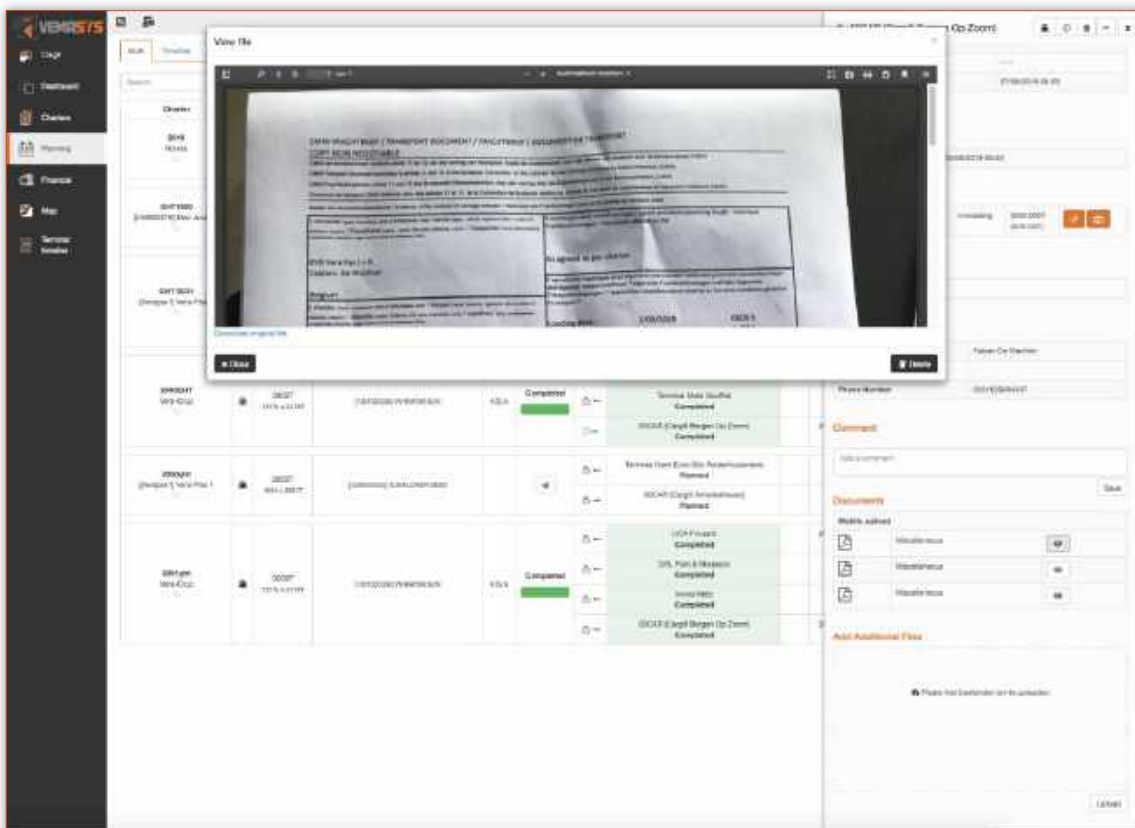
Following contacts will receive a tracking link when the contractor accepts this charter proposal.

Fabian De Wachter fabian@verspax.be ✓

Are you sure you are finished and wish to send the proposal to the vessel?

✕ Close ✓ Yes, I'm sure

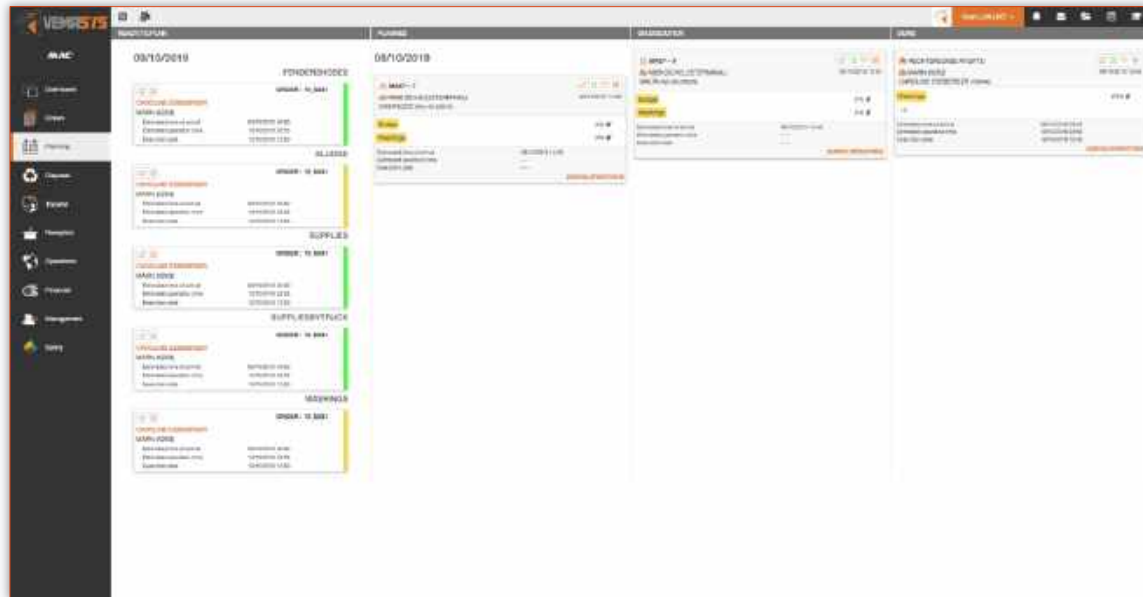
📍 Barge Operator/Agent



Collect and generate documents

- ✔ Documents and checklists can be uploaded or filled in (and signed digitally) online. And are available for the operator/terminal in real-time
- ✔ In case of dual signature (vessel and terminal) a unique signature link can be sent to a 3rd party (if not already connected to VEMASYS) to obtain a second signature.

📍 Barge Operator/Agent



Dashboards, KPI's and reporting

- ✔ A wide variety of standard and custom reports can be generated right from the platform, including excel export files.
- ✔ For advanced, custom reports, the data can be accessed via an API for BI reporting.
- ✔ Various dashboard views (like Kanban, timeline) are standard available.

📍 Vessel



- ✓ Charter document requirements
- ✓ Planning overview with ETA's
- ✓ Terminal information and route planner
- ✓ Digital logbook
- ✓ Certificates, E.B.I.S., Technical maintenance
- ✓ Convenient iOS and Android app



Terminal planning

05/10/2019

ArcelorMittal See (Amcal)

Planned ETA	05-10-2019 14:00
ETA	05-10-2019 04:47 - 0.5h
Estimated duration	
0 - 0 hour	05-10-2019 14:00

Logbook

Monday 7 October 2019

- 12:36 → 12:00 Salarbrücke - 7 hour
- Navigation
- 09:12 → 10:48 Rorvik Rheinu Becken 2 - 1 hour
- Navigation
- 00:51 → 10:52 Ursecken Lusatien - 1 hour
- Navigation
- 00:51 → 09:09 Rorvik Rheinu Becken 2 - 8 hours
- Navigation
- 00:12 → 00:04 Gln. Mainzheim - 22 minutes

Sunday 8 October 2019

- Navigation - 1 hour
- 23:04 → 23:04 Komrad Adenauerbrücke - 23 minutes
- Navigation
- 22:30 → 22:30 Rhein-Neckar - 21 minutes
- Navigation
- 22:17 → 22:17 Theodor-Heuss Brücke - 1 hour
- Navigation
- 21:07 → 21:07 Felselingerbrücke - 1 hour
- Navigation
- 19:18 → 19:18 Gemäthen Checkpoint - 2 hours
- Navigation
- 17:14 → 17:14 Fähr Fährlehn - 1 hour
- Navigation
- 16:37 → 16:37 Rhein-Main - 3 hours
- Navigation
- 12:19 → 12:19 Bingen Checkpoint - 3 hours
- Navigation

Planning overview with ETA's and logbook

- ✓ Logbook is auto filled based on geo-fencing
- ✓ Planning shows real-time ETA and updates



Quick view — KB53 - KB69 (PSA EuropaTerminal)



Type	Terminal
Location	Antwerpen
Average stay duration	20.0h
Loading rate (7 bulk or containers)	10h
Unloading (10-7 bulk or containers)	6h
Keel length (m) 1.180	
Maximum depth (m) 14.6	
Opposite pier (m) 72	
Capacity (1000 TEU) 1.800	
Contains cranes 8 met rekwaaliteit tot 20 containers breed.	

Opening hours

Day	00	12	18	24
Monday	[Green bar]			
Tuesday	[Green bar]			
Wednesday	[Green bar]			
Thursday	[Green bar]			
Friday	[Green bar]			
Saturday	[Green bar]			
Sunday	[Green bar]			

Documents

Act:


Vessel routing

Departure & Arrival

From:

To:

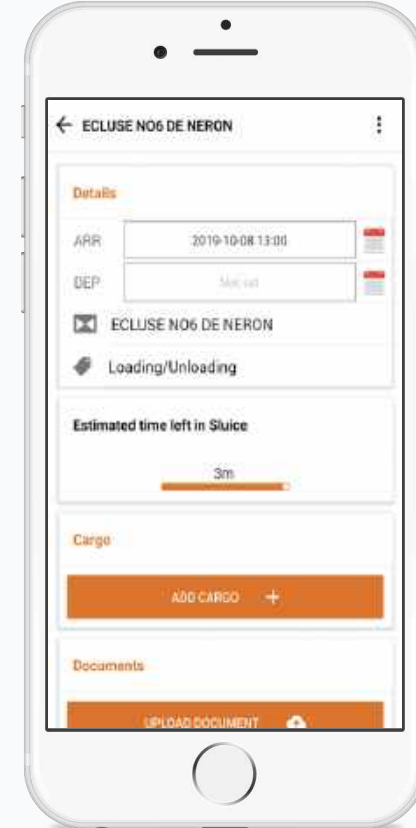
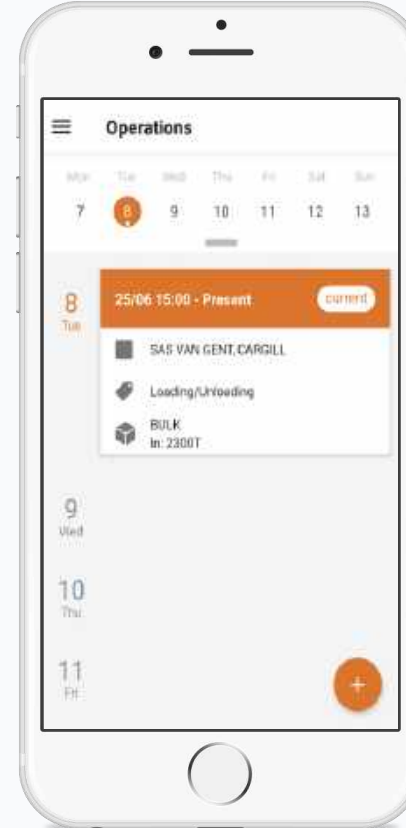
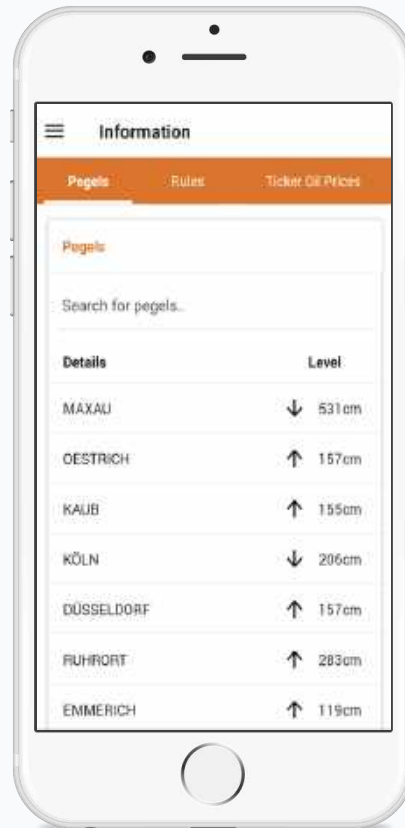
Operating mode: AV AT BT



Terminal information and route planner

- ✓ Opening hours and info of terminal
- ✓ Route planner (for that type of vessel)
- ✓ ETA and ETD prediction for all stops

📍 iOS and Android app



Thank you



 tony@bluecentury.eu

 Tony Ameryckx