



Project introduction and status

Mario Kaufmann, viadonau
29.09.2020, GRENDEL Event



→ Realise a common RIS Corridor Management implementation project, with special focus on ...



... continuing harmonised RIS implementation in Europe



... providing seamless services on Corridor / European level following the CoRISMa concept

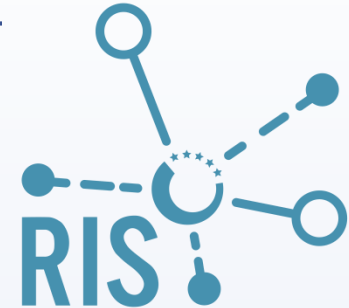
... establishing necessary frameworks for sustainable operation



... ongoing stakeholder management and user integration



Define and realise RIS Corridor Services
and transfer them into sustainable operation
based on the established frameworks!



What is “RIS Corridor Management” actually?

→ ... information services among fairway authorities / waterway users / logistic partners to optimise the use of inland navigation corridors within the European Waterway Network to ...

... enable reliable

Route Planning by
supplying dynamic
and static fairway-
and infrastructure
information (level 1)

... enable reliable

Voyage Planning and
Traffic Management,
by providing traffic
information (level 2)

... support Transport
Management of the
logistic partners
(level 3)

Expected impacts



Better plannability and reliability of inland waterway transports



Reduction of waiting and travel times

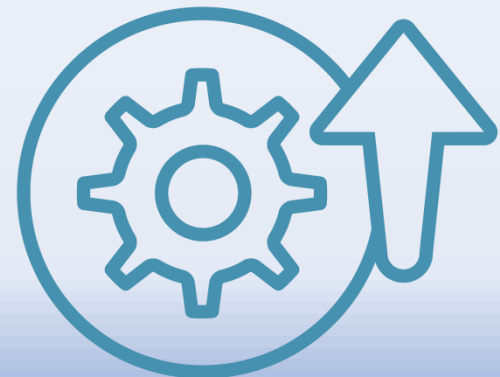
Reduction of administrative barriers and reporting burdens

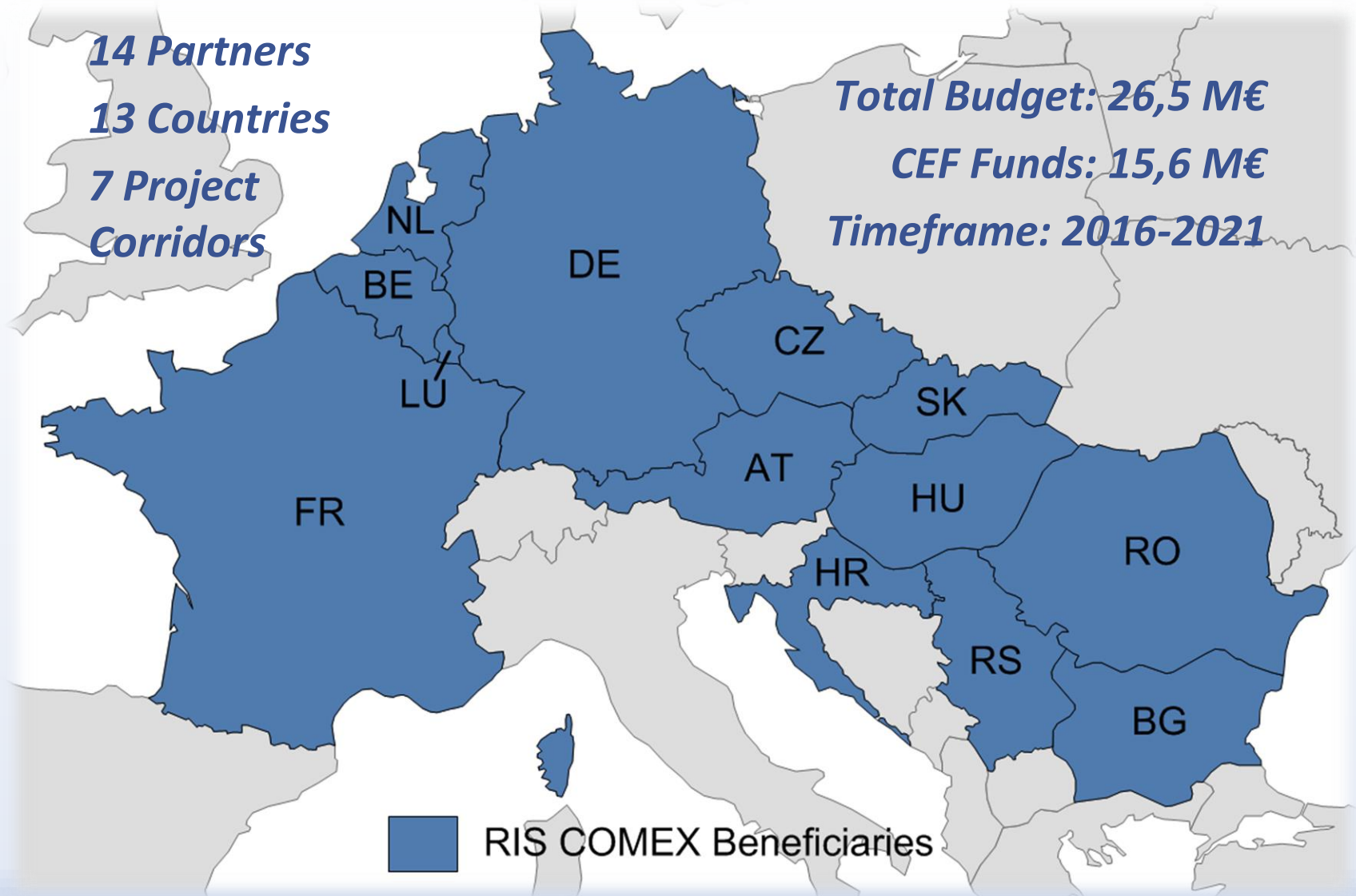


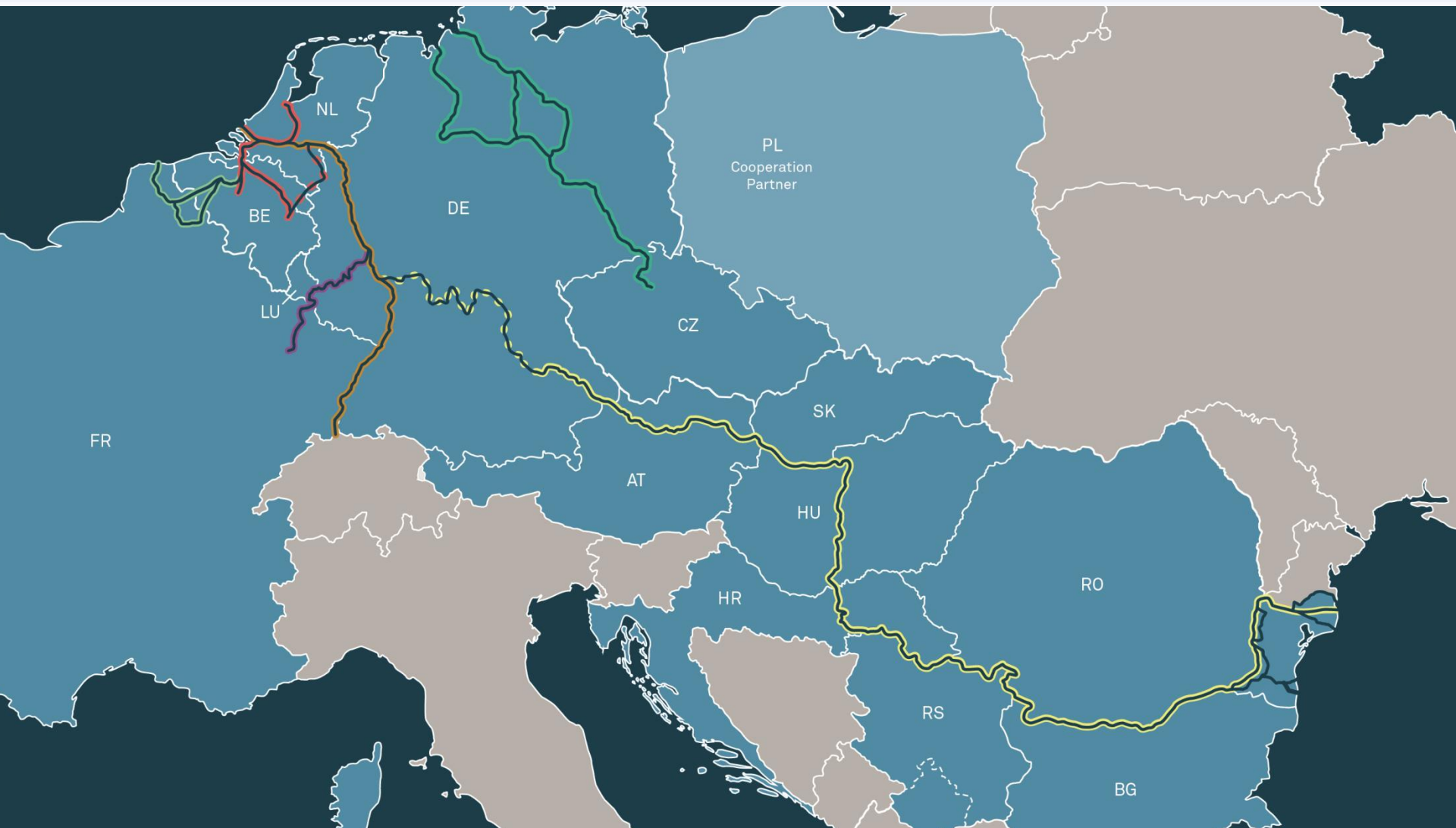
→ Increased efficiency of inland navigation transports



Increased utilisation of available capacities

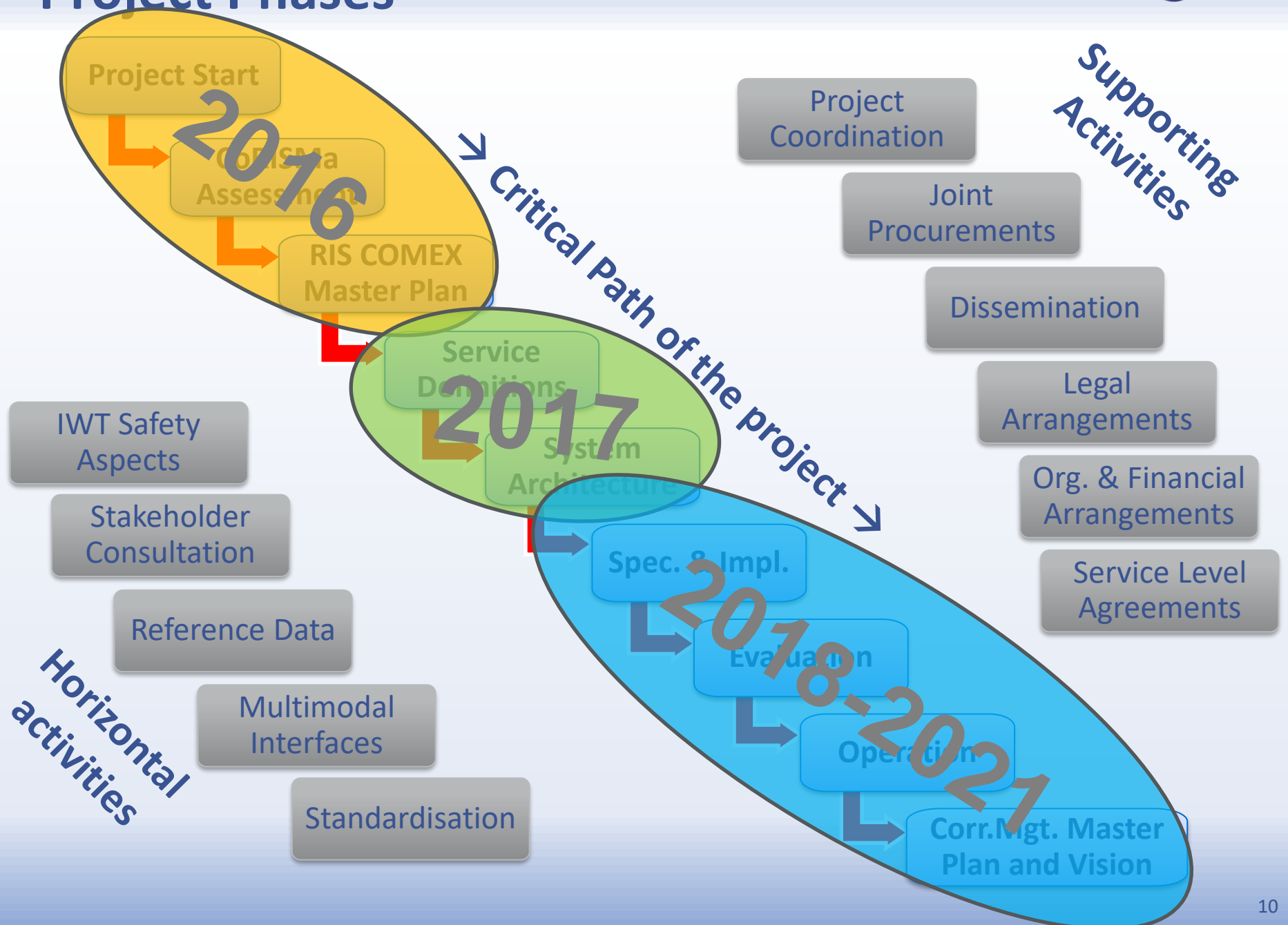






- Danube
- Amsterdam-Antwerp-Liège/Brussels
- Elbe-Weser
- Rhine
- Dunkerque-Scheldt
- Mosel

Project Phases



- VisuRIS COMEX System
 - All 13 RIS COMEX partners
 - Fairway-, Infrastructure- and Traffic-related services
 - Based on Flemish VisuRIS system
 - Adaptations ongoing
 - Transfer into operation in 2021
 - Joint Governance and financing of the operation

- Common Electronic Reporting System
 - Joint Procurement by 8 partners ongoing
 - AT-SK-HU-HR-RS-RO-BG-CZ
 - Configuration of reporting requirements
 - Reporting only once & single entering of data per voyage
 - Customised provision of reports to authorities

- Implementation start by beginning of September 2020
- Implementation until the end of 2021
- Operational start by beginning of 2022

Mario Kaufmann

viadonau

mario.kaufmann@viadonau.org

www.riscomex.eu