

Annex 06 .

Illustrations by Réka Livits

SaveGREEN Kick-Off Event

8.-9. September 2020

Project co-funded by the European Union funds (ERDF).

SaveGREEN

KICK-OFF MEETING

8-9 SEPTEMBER 2020

www.interreg-danube.eu/savegreen

HILDEGARD MEYER

PROJECT INTRODUCTION

- PILOT AREAS IN:
- AUSTRIA
 - BULGARIA
 - HUNGARY
 - ROMANIA
 - SLOVAKIA
 - UKRAINE

- PUBLIC AUTHORITIES
- SECTORIAL AGENCIES
- NGO's
- other interest groups



CROSS-SECTORAL & TRANSNATIONAL COLLABORATION

NATIONAL & REGIONAL CONTEXT

SAFEGUARDING THE FUNCTIONALITY OF TRANSNATIONALLY IMPORTANT ECOLOGICAL CORRIDORS IN THE DANUBE BASIN

WE ALSO NEED SPACE.

WE ALL DEPEND ON OUR ECOSYSTEM SERVICES.



OUTPUTS:

- LOCAL MONITORING METHODOLOGY
- CROSS-SECTORAL OPERATIONAL PLANS
- WORKSHOPS
- CAPACITY-BUILDING PROGRAM
- CONFERENCE

IMPROVE ECOLOGICAL CONNECTIVITY IN BOTTLENECK AREAS



STAKEHOLDER INVOLVEMENT IN THE FIELDS OF:

- AGRICULTURE
- FORESTRY
- TRANSPORT
- SPATIAL PLANNING

PROJECT OBJECTIVES

IN NUMBERS:

- DURATION: 1 JULY 2020 - 31 DEC 2022
- 13 PROJECT PARTNERS FROM 6 EU countries
- 20 ASSOCIATED PARTNERS from 4 more countries
- LEAD PARTNER: WWF CENTRAL & EASTERN EUROPE
- PROJECT VALUE: ~2.7 Mio EUR, ~2.3 Mio EUR ERDF FUNDS



SHARING KNOWLEDGE & BEST PRACTICES

POLICY CONTEXT IS A BACKBONE OF IMPLEMENTATION

- POLICY ENGAGEMENT
- ADVOCACY
 - STAKEHOLDER INVOLVEMENT
 - CROSS-SECTORAL COOPERATION



MONITORING

CAPACITY BUILDING

BUILDING ON ALREADY EXISTING PARTNERSHIPS & PROJECTS



Project co-funded by the European Union funds (ERDF).

www.interreg-danube.eu/savegreen

SaveGREEN

KICK-OFF MEETING

8-9 SEPTEMBER 2020

HANS BEKKER
 KEYNOTE SPEECH 1
TRANSPORT INFRASTRUCTURE & ECOLOGY

FINANCIAL COSTS OF TECHNICAL SOLUTIONS:

€ € €
 EXISTING INFRASTRUCTURE € NEW BUILDINGS

? HOW TO ADDRESS THE ISSUE OF INFRASTRUCTURAL IMPACT?

AVOID ROAD BUILDING? ???

INCREASE AWARENESS ABOUT THE IMPACT OF INFRASTRUCTURE.

MITIGATE EFFECTS!

- DEFRAGMENTATION
- BRIDGES
- TUNNELS
- UNDERPASSES FOR WILD ANIMALS

! THEY NEED MAINTENANCE

★ SHARE SUCCESS
 STORIES
 CELEBRATE MILESTONES

FRAGMENTATION IS A BIG ISSUE!

TRANSPORT INFRASTRUCTURE
 ROADS, WATERWAYS, RAILWAY, AIR TRAFFIC ETC.

BRIDGING

ECOLOGY
 • LIVING ORGANISMS,
 • ENVIRONMENT,
 • RELATIONS

BOTH ARE APPLIED SCIENCES

! KNOWLEDGE ABOUT PROCESSES IS ESSENTIAL

YOU NEED PLANNING TO PROTECT AN AREA & YOU NEED TO KNOW THE AREA BEFORE STARTING CONSTRUCTION

IT IS A TRANSDISCIPLINARY & TRANSNATIONAL ISSUE

• ECOLOGICAL CORRIDORS IDENTIFY THE MOST CRUCIAL POINTS

EXAMINE EXISTING INFRASTRUCTURE

COLLECT INFORMATION, TAKE ACTION

ADDRESS THE COURT

BADGERS in the Netherlands
 A DRAMATIC DEGRADATION OF POPULATION

SUCCESS!
 FIRST BADGER TUNNEL BUILT

MONITORING IS ESSENTIAL

WORK DOESN'T STOP HERE!

Project co-funded by the European Union funds (ERDF).

SaveGREEN

KICK-OFF MEETING

8-9 SEPTEMBER 2020

IVA OBREtenova

KEYNOTE SPEECH 2

HOW DOES EUROPE PLAN FOR
 SAFEGUARDING ECOLOGICAL CONNECTIVITY?
 A NEW STRATEGY FOR BIODIVERSITY

ALSO A FOCUS POINT
 OF THE EUROPEAN
 GREEN DEAL

www.interreg-danube.eu/savegreen

- **LEGALLY PROTECT** min. 30% of EU's land area
- **STRICTLY PROTECT** min. 1/3 of PROTECTED AREAS

GOAL 15 → COHERENT & RESILIENT
 TRANS-EUROPEAN
 NATURE NETWORK



CRITERIA & GUIDANCE
 TO IDENTIFY & DESIGNATE
 ADDITIONAL AREAS

PROTECT NATURE


RESTORE NATURE


ELEMENTS
 OF THE
 EU BIODIVERSITY
 STRATEGY

ENABLE TRANSFORMATIVE CHANGE


EFFECTIVE MANAGEMENT

EU FOR AN
 AMBITIOUS
 GLOBAL
 AGENDA


CLEAR MEASURES MONITORING

RESTORING DEGRADED ECOSYSTEMS
 • HELPING NATURE TO RECOVER



ALSO FOSTER THE
 DIVERSITY OF
 AGRICULTURAL
 AREAS

NEEDS LEGALLY BINDING
 COMMITMENT

REVERSE THE
 DECLINE OF
 POLLINATORS

RESTORATION PLANS
 HELP TO PROTECT
 EXISTING AREAS

EU-LEVEL
 TARGET

BREAKING IT
 DOWN TO MEMBER
 STATES

**EU BIODIVERSITY
 STRATEGY 2030**

BUILDING ON
 EXISTING
 FRAMEWORKS,
 MAKING THEM
 COMPLETE &
 COHERENT

ENGAGE
 ALL SECTORS
 OF SOCIETY

THE WORLD
 EMERGING FROM
 THE CURRENT
 CRISIS

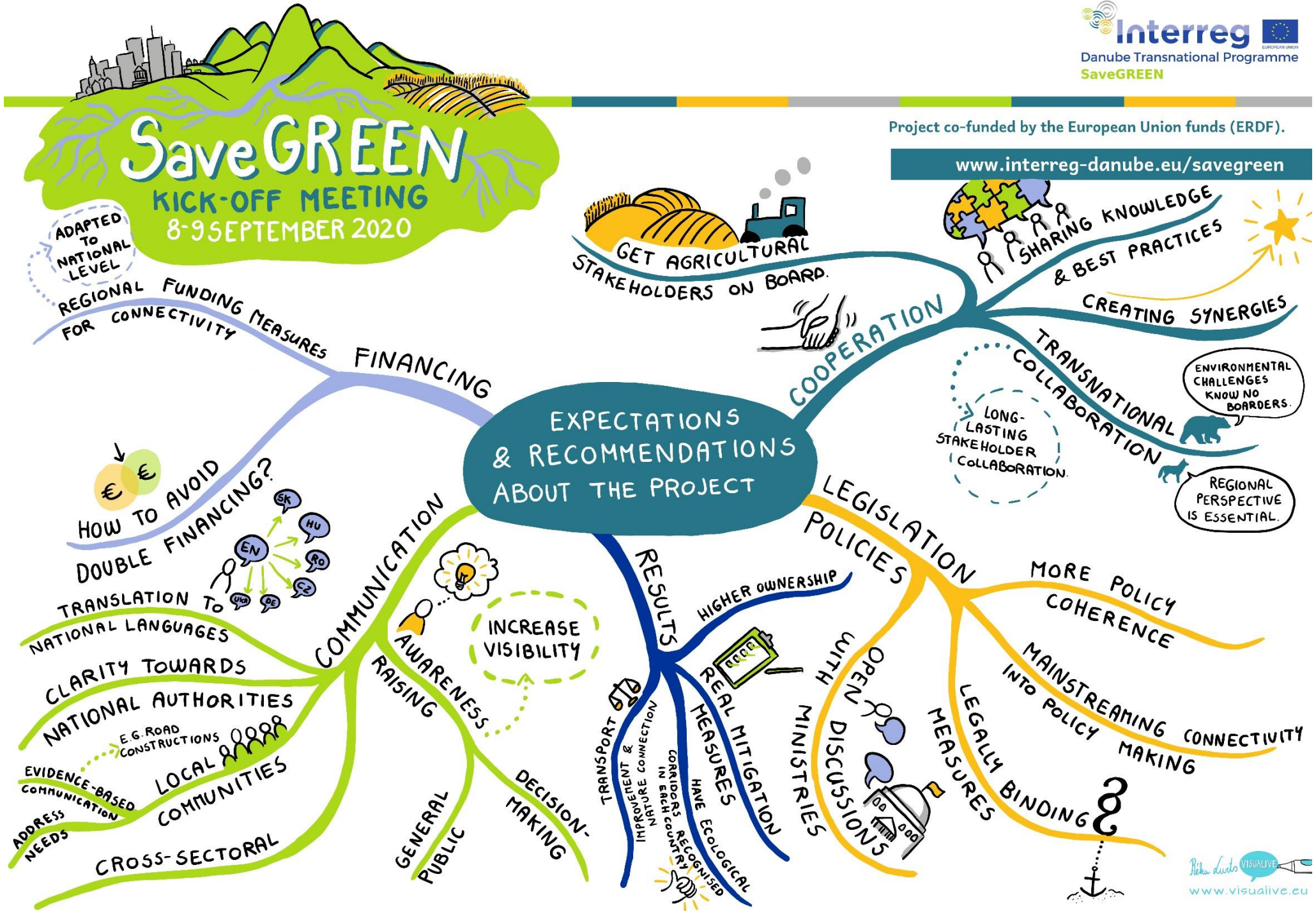
NATURE CONNECTION
 IS KEY
 HEALTHY ECOSYSTEMS
 ARE VITAL

RESILIENCE

COMMUNITIES
 ECOSYSTEMS

Project co-funded by the European Union funds (ERDF).

www.interreg-danube.eu/savegreen



Project co-funded by the European Union funds (ERDF).

www.interreg-danube.eu/savegreen

SaveGREEN

KICK-OFF MEETING

8-9 SEPTEMBER 2020

ROLAND GRILLMAYER

WORK PACKAGE 1

in cooperation with the CZECH TRANSPORT RESEARCH CENTER

DEVELOPING A STANDARDIZED MONITORING METHODOLOGY & TECHNICAL TOOLBOX TO TRACK & MEASURE STRUCTURAL & FUNCTIONAL CONNECTIVITY

APPROPRIATE MEASURES & ASSESSMENT ARE KEY FACTORS FOR PLANNING & DESIGNING

STRUCTURAL CONNECTIVITY

BASED ON SPATIAL COMPOSITION OF LANDSCAPE ELEMENTS



ANALYSIS, SATELLITE INFO, MAPS

THE EXISTING ECOLOGICAL CORRIDOR DESIGNATION IS BASED ON THIS BUT IT WOULD ALSO NEED TO TAKE INTO ACCOUNT:

FUNCTIONAL CONNECTIVITY

FOCUSING ON A SPECIES' PERSPECTIVE

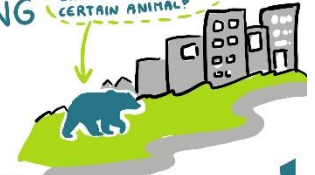
NEEDS KNOWLEDGE ABOUT THE SPECIES

AND ABOUT DISTURBANCE FACTORS (NOISE, POLLUTION, INTENSIVE AGRICULTURE ETC.)

2STAGE PROCESS:
 1 IDENTIFY STRUCTURAL CONNECTIVITY
 2 EXAMINE RESISTANCES

DEVELOPING MONITORING TOOL

HOW DIFFICULT IS IT TO MOVE THROUGH THE LANDSCAPE FOR A CERTAIN ANIMAL?



DESIGNATION OF CORRIDORS NEED HARMONISED CLASSIFICATION



- EXTEND ROADKILL APPLICATION
- ANIMAL TRACK RECORDING
- EXISTING OPEN-SOURCE SOFTWARE

CAPACITY BUILDING PROGRAMME

- PROVIDES TOOLS FOR:
 - SEA (STRATEGIC ENV. ASSESSMENT)
 - EIA (ENV. IMPACT ASSESSMENT)
 - HANDBOOK OF BEST PRACTICES



NOT ONLY MIGRATION BUT ALSO HABITAT FOR SMALLER SPECIES IS IMPORTANT

GREY INFRASTRUCTURE IMPACT MEASURES GREEN INFRASTRUCTURE
 GLOM ASPECTS ENV. PROCEDURES

MONITORING IS NEEDED (NOISE MEASUREMENT, WILD CARS etc.)

Project co-funded by the European Union funds (ERDF).

www.interreg-danube.eu/savegreen

SaveGREEN

KICK-OFF MEETING

8-9 SEPTEMBER 2020

RADU MOT WORK PACKAGE 2 LOCAL ACTIONS



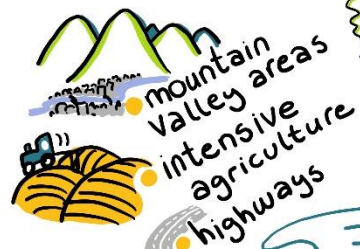
DEMONSTRATE HOW INTEGRATED PLANNING CAN BE IMPLEMENTED

DEVELOP CROSS-SECTORAL OPERATIONAL PLANS



ACTIVITIES:

- COOPERATION WITH LOCAL STAKEHOLDERS & WORKING GROUPS
- STAKEHOLDER ANALYSIS
- DEVELOP CSOPs
- MONITORING
- TEST & REPORT ON IMPLEMENTATION

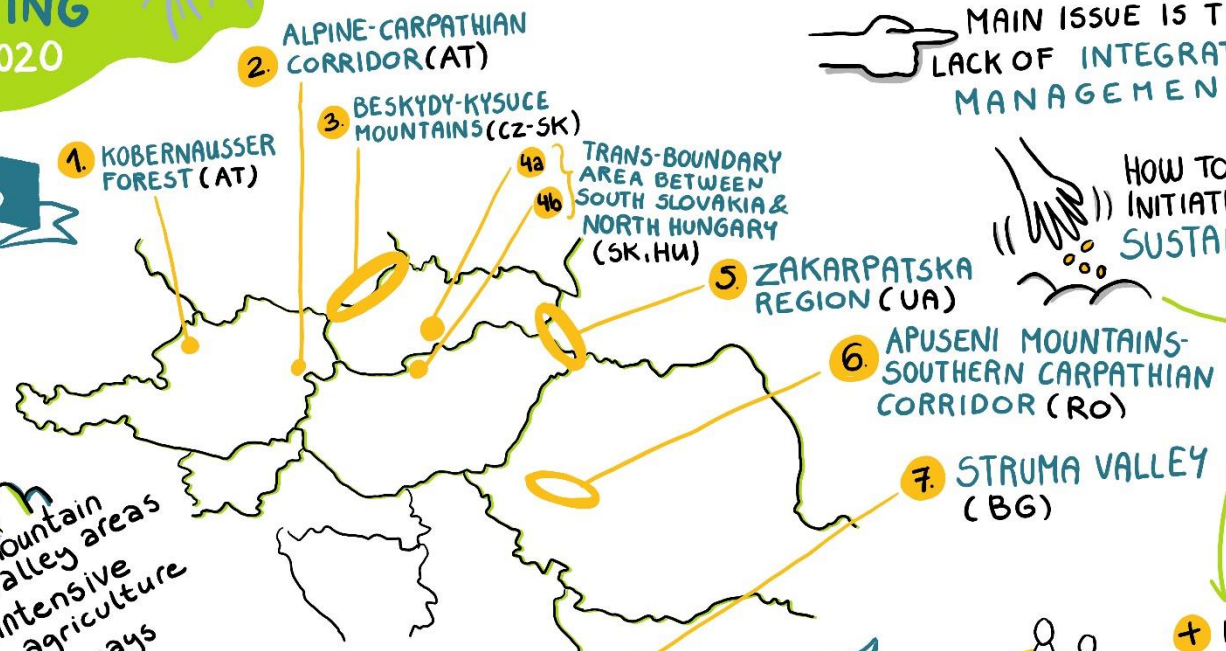


7 PILOT AREAS OF THE PROJECT

! CRITICAL ECOLOGICAL CORRIDORS !



PARTICIPATORY DEVELOPMENT OF 7 CROSS-SECTORAL OPERATIONAL PLANS



MAIN ISSUE IS THE LACK OF INTEGRATED MANAGEMENT

HOW TO MAKE INITIATIVES SUSTAINABLE?

CREATE OWNERSHIP

+ INTEGRATION IN SECTORAL PLANS

Project co-funded by the European Union funds (ERDF).

www.interreg-danube.eu/savegreen

SaveGREEN

KICK-OFF MEETING

8-9 SEPTEMBER 2020

DIANA COSMOIU

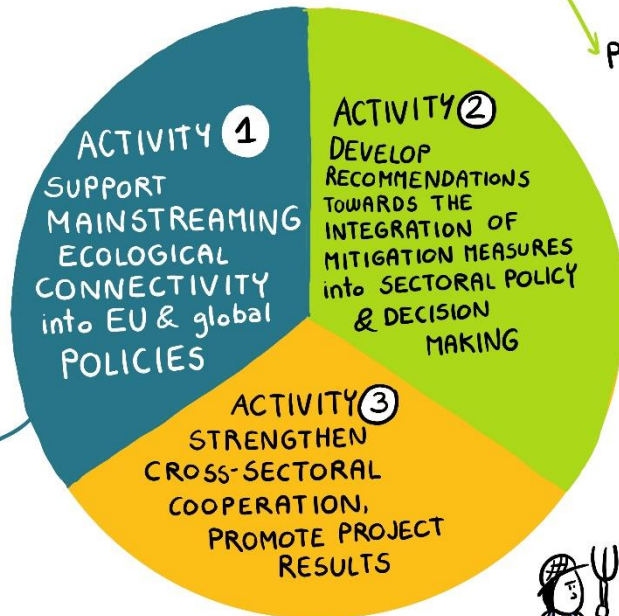
• WORK PACKAGE 3 •
 POLICY, CAPACIT BUILDING,
 NETWORKING


 CROSS-SECTORAL
 DIALOGUE


 ADVOCACY

 STAKEHOLDER
 INVOLVEMENT

EUSDR &
 CARPATHIAN
 CONVENTION




 RELEVANT
 KEY FEATURES OF
**COHESION
 POLICY 2021-2027**


 OBJECTIVES OF THE
 COMMON
 AGRICULTURE
 POLICY



 GREENER, LOW-CARBON
 EUROPE


 A MORE CONNECTED
 EUROPE


 ENVIRONMENTAL
 CARE

PRESERVE LANDSCAPES
 & BIODIVERSITY

BREAKOUT GROUPS


 IDENTIFYING
 PROBLEMS, NEEDS ON
 NATIONAL, LOCAL LEVEL:

CZ AT ALREADY A FEW
 DESIGNATED ECOLOGICAL
 CORRIDORS
 BUT NO LEGAL STATUS
 & INSTRUMENTS


 PROPER
 LEGAL
 FRAME-
 WORKS
 ARE NEEDED


 LEAVING ECOLOGICAL
 CORRIDORS IS NOT
 PROFITABLE.

FINANCIAL €
 COMPENSATION
 WOULD BE NEEDED



