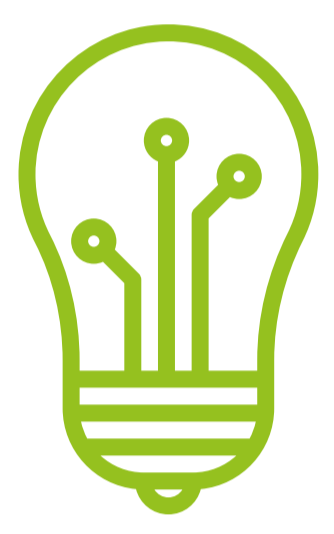


# EMELI



Cargo training vessel, 682T, 55m by 7.2m



## Innovation

- Diesel-electric powertrain (retrofit)
- Hydrogen propulsion
  - Fuel cell 30 KW installed
  - Hydrogen storage installed :  
200 12kg at bar allowing 10 hours of full power zero-emission



## Emission reduction *(when sailing on hydrogen)*

- CO<sub>2</sub> : 100%
- PM : 100%
- NO<sub>x</sub> : 100%



## Assets

- Used by maritime academy for training new staff in IWT, getting acquainted with innovative powertrains
- Noise reduction