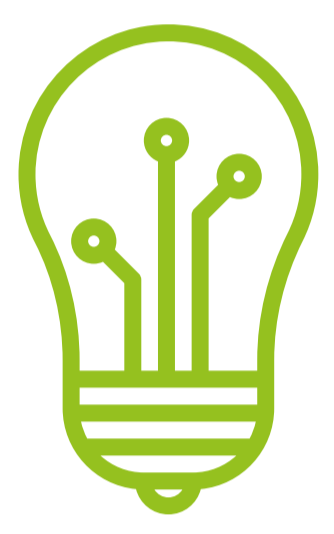


HYDROVILLE



Hydrogen passenger shuttle, 14m by 4.2m



Innovation

- Dual fuel hydrogen diesel co-combustion engine with pressurized hydrogen



Emission reduction (@2800 rpm)

- CO₂ : 58-73%
- PM : 57%
- NO_x : 65%



Assets

- Sailing laboratory to test new hydrogen technologies
- Demonstration vessel to raise awareness and inform
- Shuttle service for CMB staff to avoid traffic jams
- 16 passengers
- Cruise speed 20/22 kn
- Sea-going vessel



Next steps

- Develop
 - Dual fuel (hydrogen – diesel) combustion engines which reach displacements of up to 85% H₂
 - Mono fuel hydrogen engine with NO_x <0.2gr/kWh without the need for after treatment



CMB

HYDROVILLE

Info : contact@hydroville.be | +32 3 247 59 11

Inland waterways & ports in action