

Interregional  
Alliance  
for the

**Rhine-  
Alpine  
Corridor**

EGTC

One Corridor – One Strategy!

# THE RHINE-ALPINE CORRIDOR:

- One of nine CNC's
- 1300 km long
- 70 million inhabitants  
(=13% of EU's population)
- 19% of EU's GDP
- 1 billion tons of freight/a
- 50 % of the N-S rail freight
- Intersections with 5 CNC's



# Corridor Characteristics

- 5 Member States and Switzerland
- 20 Rail-Road Terminals
- 13 urban nodes
- 22 inland ports
- 8 seaports
- 11 airports



# Starting Point and Challenges

- Regional/local level so far not directly involved in Corridor development
- No joint strategy, no cooperation existing
- Increase of traffic and transit tasks
- Urgent conflicts (bottlenecks, capacities) to be tackled incl. sustainability
- Cross-border issues and technical hurdles
- New capacities implemented (e.g. Gotthard tunnel)

# „CODE24“

- Funding programme: INTERREG IVB North-West Europe
- Labelled „Strategic Initiative“
- Budget: 8 Million €
- EU-Funding rate: 50%
- Project start: January 2010
- Project duration: 5 years
- 18 Project Partners
- Lead Partner: Verband Region Rhein-Neckar



# CODE24 Characteristics

- Bottom-up initiative from regions and cities
- An interdisciplinary approach:
  - Spatial, transport and ecological planning
  - Economic development.



# Work Packages

Work Packages	
1	Spatial and Infrastructural Development
2	Environmental Aspects and Noise Reduction
3	Increasing Regional Economic Benefits
4	Communication, Acceptance and Enduring Interregional Cooperation, including „Preparation of Future Cooperation Structure“

# Common intention to establish a new cooperation structure

- Corridor development permanent task
- Need for a legal structure/institutionalization
- EGTC perfectly appropriate form





# Why an EGTC...?

- Not national, but European legal form
- EGTC Regulation made for public cooperation
- Recognised legal form in the EU
- Eligible for EU-funding

# Advantages of an EGTC

- **It can operate as an administration unit with own legal personality**
  - **It can independently carry out projects as a legally responsible corporate body**
  - **It provides an organizational model for a long-term cooperation**
  - **It facilitates and promotes territorial cooperation**
  - **It guarantees the saving of a sustainable partnership once a project lifetime has come to an end**
  - **It is eligible for EU-funding and may apply for and manage EU-funds**
  - **It has a strong voice and speaks for its members**
  - **It provides enhanced visibility of the Corridor in regions, countries and at European level**
  - **It offers the possibility of a strong placement in the public space and an establishing of political contact**

# FROM CODE24 TO EGTC

The “Interregional Alliance for the Rhine-Alpine Corridor EGTC”

- shall continue and extend the successful cooperation of CODE24
- shall implement and further develop the common strategy



# 1st step: Declaration for EGTC signed at Final Conference of CODE24 in Nov. 2014



# Important steps for establishing an EGTC

- Discuss and decide about essential contents of the Convention/Statutes, i.e.
  - objectives and tasks
  - legal seat
  - organs: Assembly, Chair(s), Director
  - annual fee
  - budget
  - staff

# EGTC Founding: 24 April 2015



# The main objective of the Alliance:

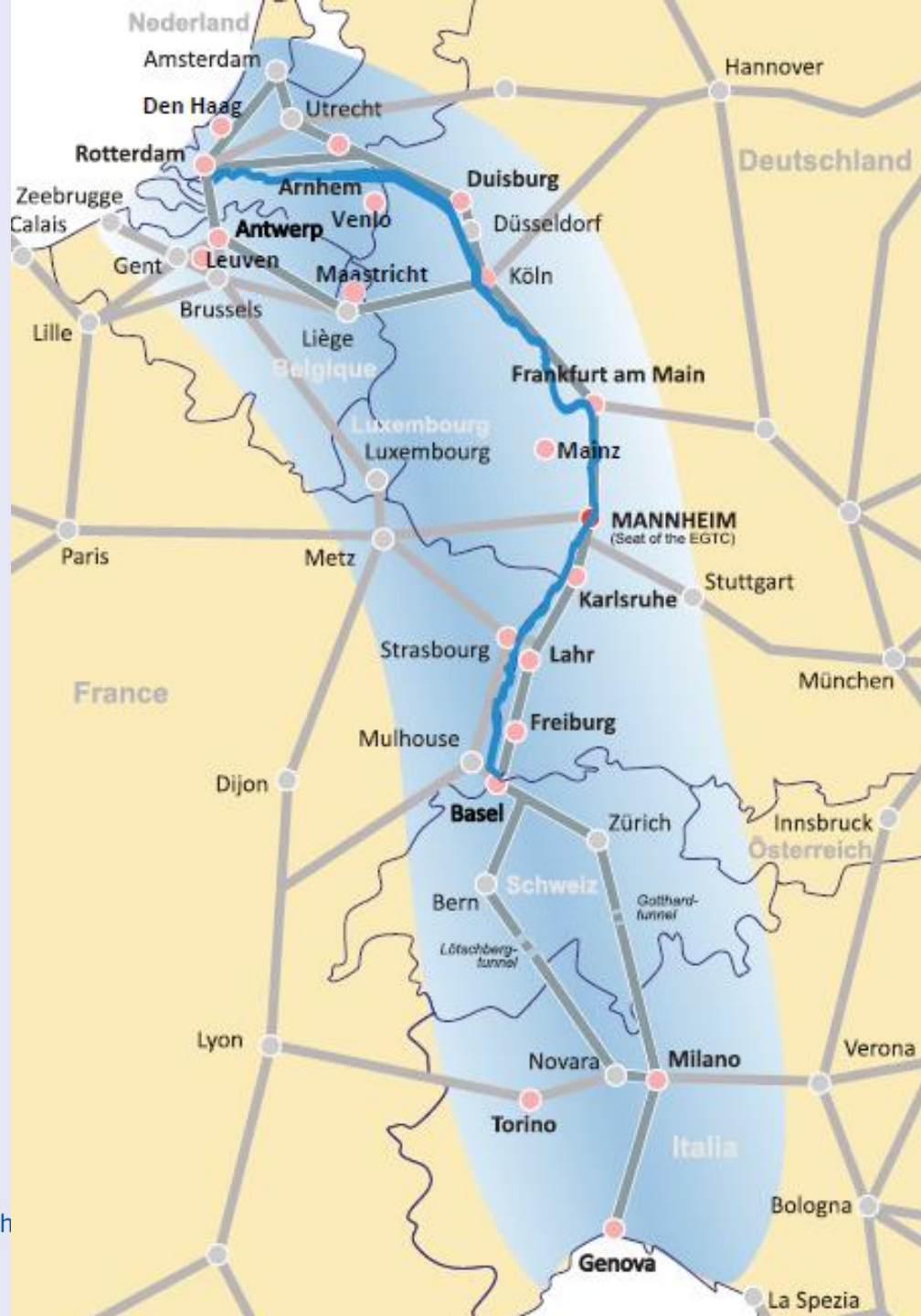
Jointly strengthen and coordinate the integrated and territorial development along the multimodal Rhine-Alpine Corridor from the regional and local perspective.



## 24 Members / 6 countries:

- Havenbedrijf Rotterdam N.V.
- Provincie Gelderland
- Provincie Zuid-Holland
- Provinie Limburg
- City Region Venlo
- Province Flemish-Brabant
- Port of Antwerp
- Metropolitanregion Rhineland
- Duisburger Hafen AG
- City of Mainz
- Region FrankfurtRheinMain
- Region Rhein-Neckar
- Stadt Mannheim
- Region Mittlerer Oberrhein
- City of Karlsruhe
- Port autonome de Strasbourg
- City of Lahr
- Region Südlicher Oberrhein
- Canton Basel-Stadt
- Region Piemonte
- Region Liguria
- Region Lombardia
- Uniontrasporti, Milano
- Ports of Genoa

egtc-rh

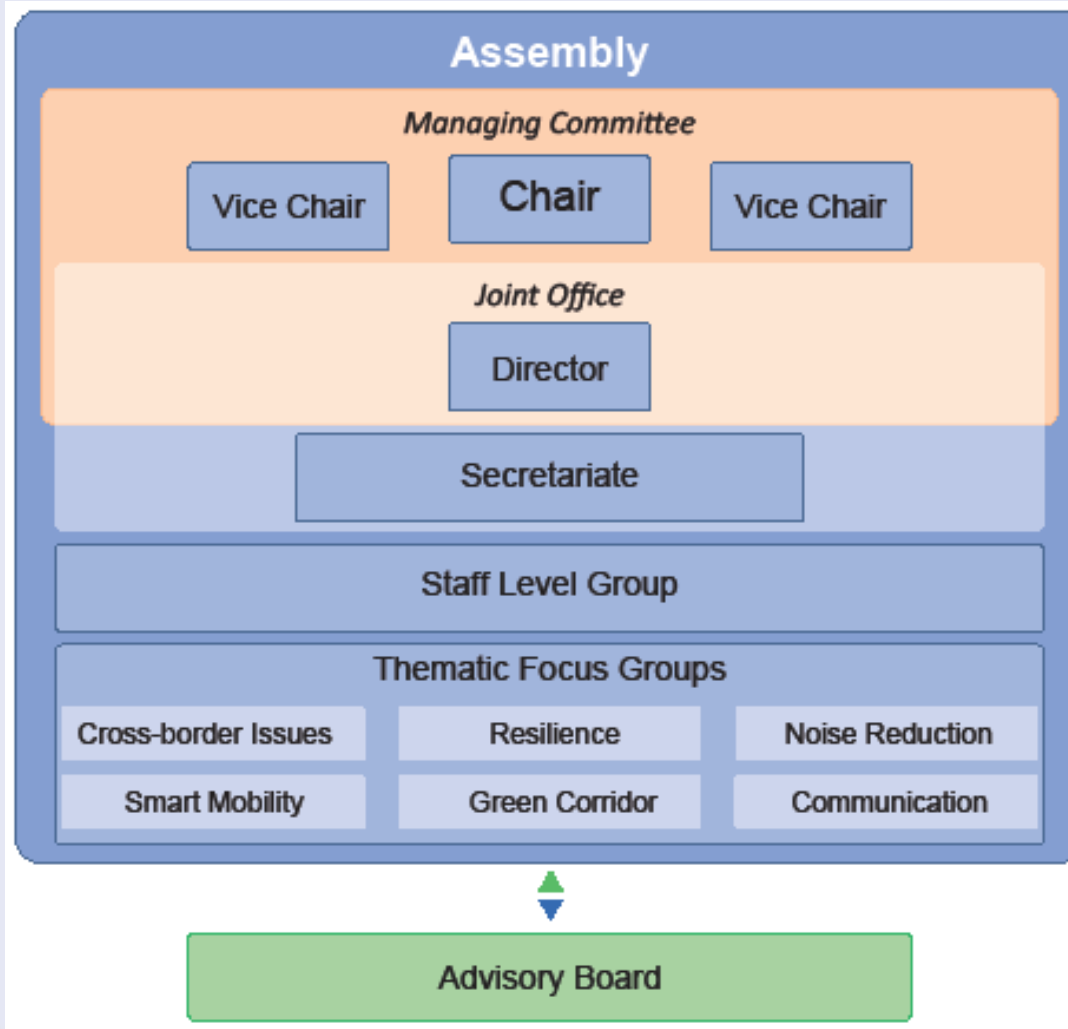




# Principles

- Lean structure/ no new bureaucracy!
- Faciliate cooperation
- Low operational budget, i.e. annual member fees
- Open for development depending on success

# Organigramm



# Corridor Stakeholders

## Stakeholders of the Rhine-Alpine Corridor

Transport  
Sector

Infra-  
structure  
Providers,  
Infra-  
structure  
Operators,  
Logistics  
Enterprises

National  
Level

Policy  
Makers

Regional-  
local  
Level

EGTC  
„Inter-  
regional  
Alliance for  
Develop-  
ment of the  
Rhine Alpine  
Corridor“

Users  
(ben efi-  
ciaries)

Enterprises ,  
Passengers,  
NGOs

Joint corridor development

## The EGTC

- represents the local and regional level which is committed to the Corridor
- is an elemental stakeholder contributing to the joint development of the Rhine-Alpine Corridor

# Activities:

- Capitalising on the results of the project CODE24
- Combining and focusing the joint interests of its members towards national, European and infrastructure institutions
- Improving the visibility and promotion of the Corridor
- Jointly promoting and lobbying the regions in the Corridor
- Implementation and evolution of the joint development strategy
- Directing funds to corridor related activities and projects
- Providing a central platform for mutual information and exchange

# Approved Projects

- ERFLS/ European Rail Freight Line System (CEF Transport)
- VitalNodes (Horizon2020)
- RAISE-IT/ Rhine-Alpine Integrated and Seamless Travel Chain (CEF Transport)



# First evaluation

- 4 years after its foundation, the EGTC has proven to be a success!
- Number of members raised from 10 to 24
- EU-funded project approved
- EGTC= member of EU Rhine-Alpine Corridor Forum
- EGTC a „door opener“!

# THANK YOU VERY MUCH FOR YOUR ATTENTION!

## Contact:

Interregional Alliance for the  
Rhine-Alpine Corridor EGTC  
Jörg Saalbach, Director  
c/o Verband Region Rhein-Neckar  
M1, 4-5  
D-68161 Mannheim  
Germany

Phone +49 (0)- 621 10708-235  
Fax +49 (0)- 621 10708-255  
E-Mail [info@egtc-rhine-alpine.eu](mailto:info@egtc-rhine-alpine.eu)  
Web [egtc-rhine-alpine.eu](http://egtc-rhine-alpine.eu)

Interregional  
Alliance  
for the

**Rhine-  
Alpine  
Corridor**

EGTC