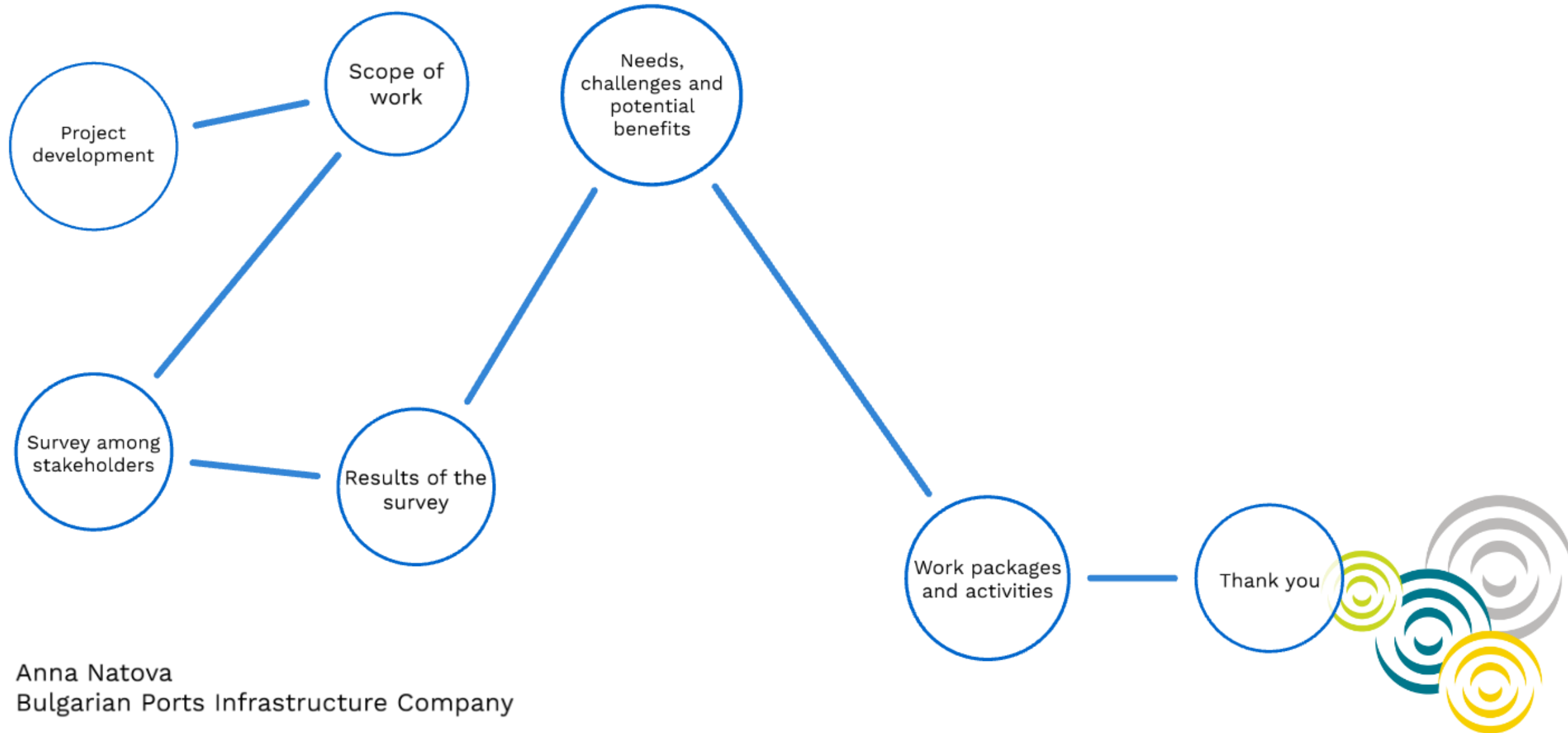


DBS Gateway Region

PREPARATION FOR THE CONSTRUCTION
OF PCS BETWEEN RIVER PORTS DBS
GATEWAY REGION

PREPARATION FOR THE CONSTRUCTION OF PCS BETWEEN RIVER PORTS DBS GATEWAY REGION



Preparatory study for the funding and development of Project:
“Feasibility study for the construction of Port Community System (PCS) between river ports”



Ready for next implementation step



TO DEFINE THE Methodology and Content of the Activities for the implementation of the Project “Feasibility Study for the construction of a PCS among river ports”

The approach developed starts from the preliminary analysis of the present situation in the Bulgarian river ports

BUT leaves to the Feasibility study to investigate further

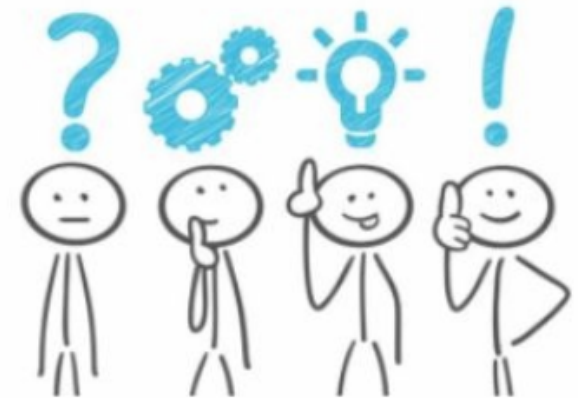
COST BENEFIT ANALYSIS

SOFTWARE DESIGN AND HARDWARE ARCHITECTURE OF PCS



TO GET RELEVANT INFORMATION a survey was carried out in most relevant river ports

- the questionnaires were distributed to 37 stakeholders
- 12 responses /37% response rate/, providing limited feedback which led to incomplete coverage of the situation in the Bulgarian river ports



Without PCS

A stakeholder needs to send the same information more times, in different formats,
to different IT systems with often very different user interface and even different business rules

DISADVANTAGES

- Time consuming
- User intensive
- Filing infinity number of documents with often repair data
- Error prone
- Requires more training and skills

Needs, challenges and potential benefits

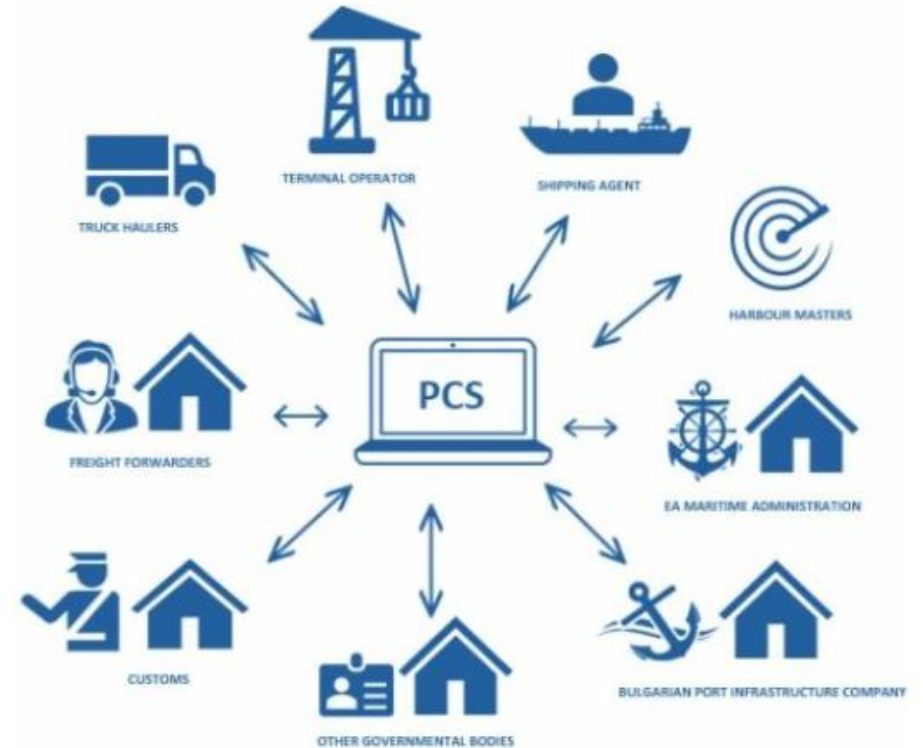
Solution?.... DIGITIZATION..... PCS!

A PCS links administrative and operational procedures electronically via the exchange of messages on an end-to end basis (machine to machine) with all stakeholders.

PCS provides a variety of services such as easy, fast and efficient information exchange, electronic customs declaration processing, and all information on cargo import and export. It provides a platform for integrating all stakeholders be they small, medium or large.

Furthermore the huge diversity of management systems needs to achieve a connectivity at enterprise, intercompany and inter-government levels.

PCS deliver Business to Government (B2G) and Business to Business (B2B) messages



Work Package 3 – Situation analysis (As-is)

Task 3.1 – Analysis of characteristics and traffic in the targeted river ports and stakeholders' commitment

Task 3.2 – Stakeholders' commitment

Task 3.3 - Assessment of current state of art of IT system infrastructure and functionalities

Work Package 4 – TO BE proposal

Activities are aimed at the definition of core functionalities, architecture, cost and operation of the PCS and rank priorities and scenarios for its development, together with the identification of Project promoters and key stakeholders.

Task 4.1 – Consensus gathering on PCS processes covered and services provided

Task 4.2 – Proposal of the TO BE situation with the implementation of the PCS

Task 4.3 – Roadmap for implementation of the PCS

Work Package 5 – Cost Benefit Analysis and Final Specification of the PCS

The CBA shall provide clear explanation of what are economic and social gains and losses expected from the proposed PCS implementation scenario/s over a period of 20 years, identifying also potential impact on the income of local businesses benefiting from the increased traffic and potential wider benefits on the community and also possible environmental drawbacks and benefits.

Work Package 6 – Specifications for the Terms of reference of PCS procurement tender

This activity will take stake of all the analytical, methodological and technical work carried out in the previous WPs and define the final configuration of the PCS, in the form of a Terms of Reference for a public Tender to be published by the Authority promoting the investment.





THANK YOU FOR YOUR ATTENTION!



Anna Natova
Bulgarian Ports Infrastructure Company

