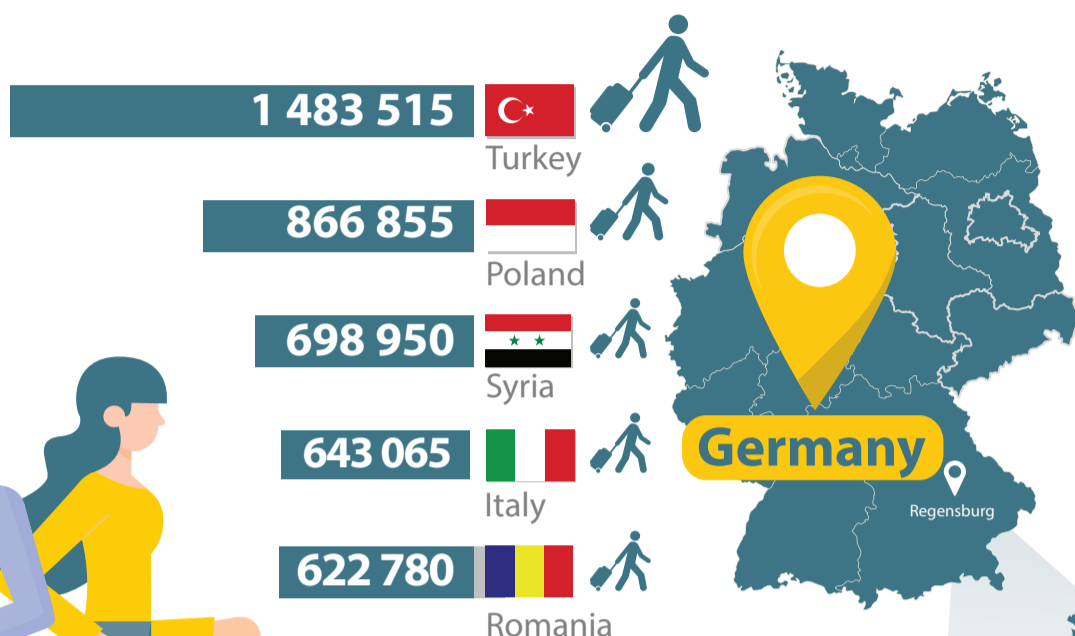
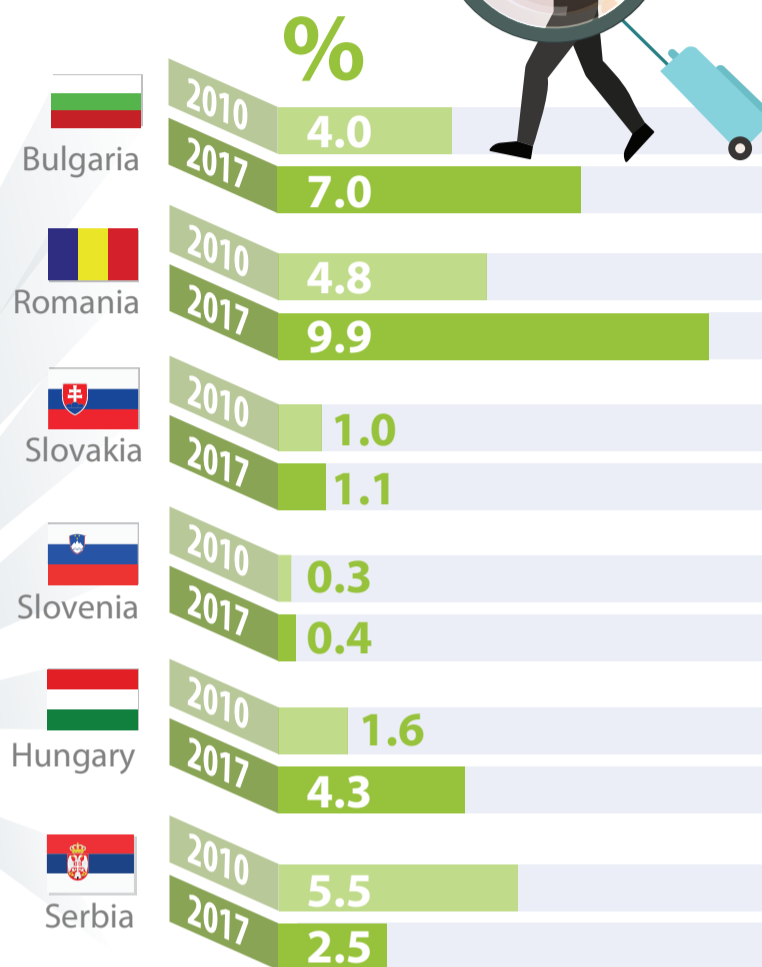


YOUTH MIGRATION

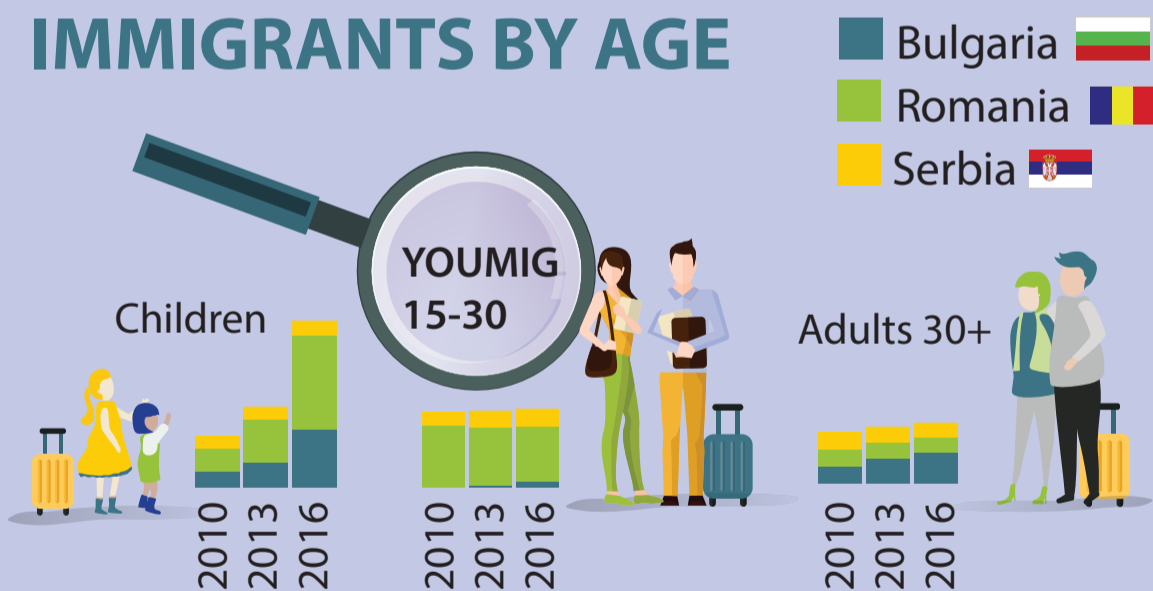
2017 TOP 5 IMMIGRANT GROUPS



DANUBE COUNTRIES

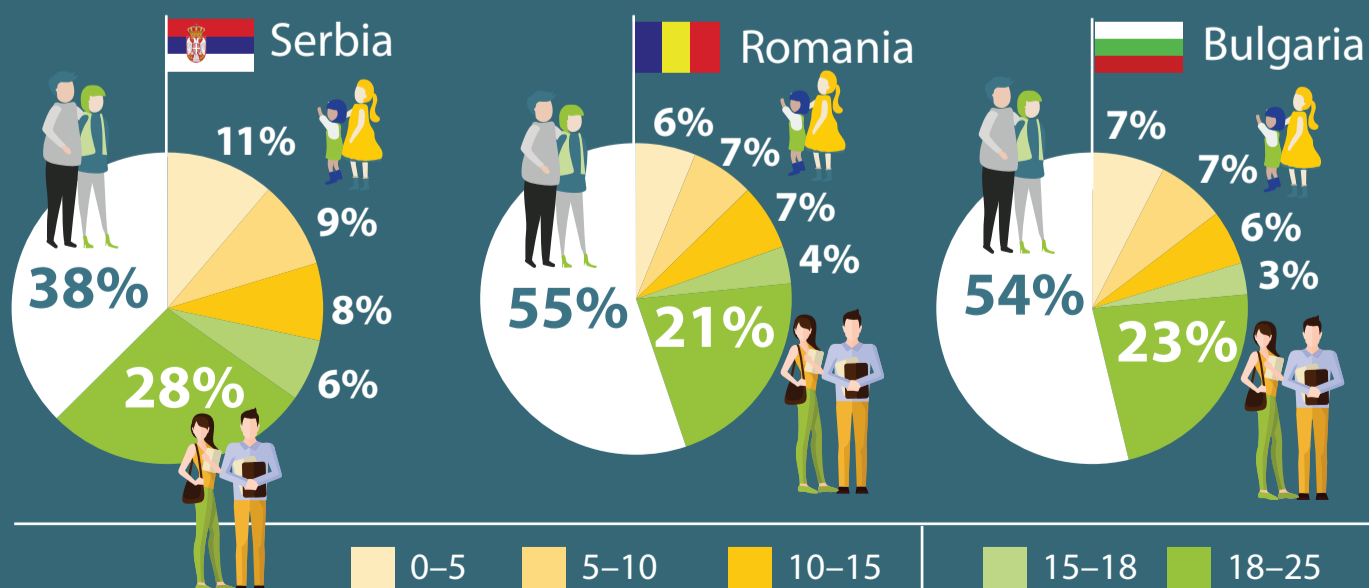


IMMIGRANTS BY AGE



AVERAGE AGE AT ENTRY

2016



Over 60% of Serbian immigrants to GERMANY are 25 or younger.

Immigrants from Bulgaria and Romania are older, with fewer accompanying children.