

# Danube Transnational Programme

Project co-funded by European Union Funds (ERDF, IPA)



## Interreg



EUROPEAN UNION

## Danube Transnational Programme

### Smart Factory Hub

**SMART FACTORY HUB - IMPROVING RD AND BUSINESS  
POLICY CONDITIONS FOR TRANSNATIONAL COOPERATION  
IN THE MANUFACTURING INDUSTRY**

# What is Smart Factory HUB?

Smart Factory HUB stands for improving framework conditions for innovation in the area of “smart factory”.

Manufacturing industry represents a generator of Research and Development, innovation, growth and employment. Based upon increasing pressure on manufacturers there is a need to embrace novel technologies, principles and approaches. In other words, manufacturers need to digitize their production, while taking into consideration also improvement in processes and human resource management.

The project's goal is to develop R&D and business policy conditions for transnational cooperation in the manufacturing industry. Result is improved cooperation between R&D and business where based on RIS3 centered model, quadruple helix partners will be oriented to find novel solutions in the following three domains: applying novel technologies, applying effective production process and applying effective human resource management system.

## Facts and figures



# Main Activities

Creation of common transnational Research and Innovation Smart Specialization Strategy. (RIS3 centered Smart Factory Model with Action Plan).

Elaboration of two testing schemes - pilot implementation of innovative supply-driven (TransferLab) and demand-driven (PolicyLab) actions based on knowledge platform, cooperation profile matrix and learning hub for technology alliances.

An extensive survey was performed by the partnership. The main conclusions show lack of SMEs involvement in the national strategies, lack of knowledge and financial resources for digitalization of the production-oriented SMEs.

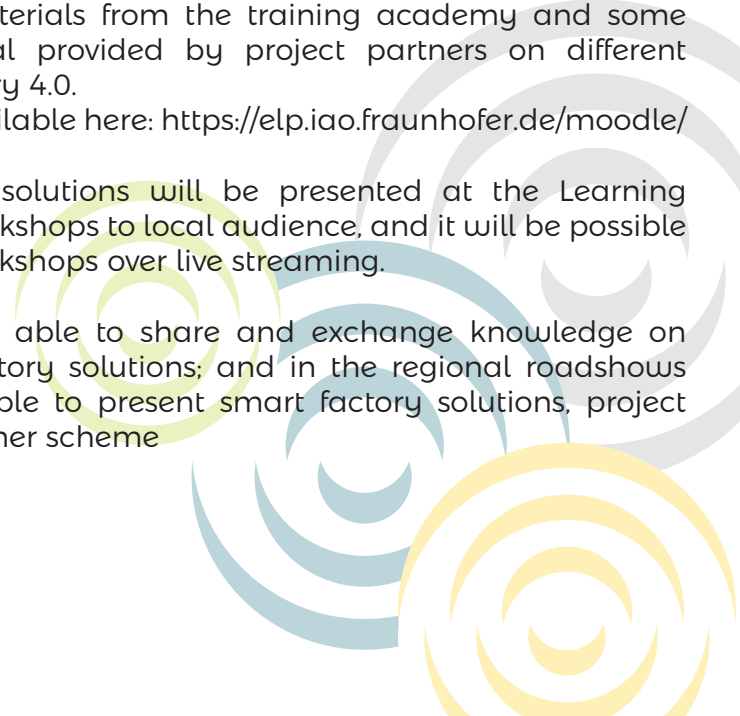
The top-down view on the manufacturing sector and its challenges in its transformation to become "smart" is depicted in 10 Regional mapping reports, covering Austria, Bulgaria, Croatia, Czech Republic, Germany, Hungary, Romania, Serbia, Slovakia and Slovenia.

The e-learning platform with the training curriculum will be comprising all materials from the training academy and some additional material provided by project partners on different thematic of Industry 4.0.

The platform is available here: <https://elp.iao.fraunhofer.de/moodle/>

10 smart factory solutions will be presented at the Learning demonstration workshops to local audience, and it will be possible to follow these workshops over live streaming.

Facilitators will be able to share and exchange knowledge on regional smart factory solutions; and in the regional roadshows partners will be able to present smart factory solutions, project platform and voucher scheme



# The project partners are divided into 3 groups.

- regions and regional public agencies
- national chambers, clusters and technology parks
- Research and Development partners



**Pomurje Technology Park**  
Slovenia (Lead Partner)



**Technical University of Cluj-Napoca**  
Romania



**Croatian Agency for SMEs,  
innovations and investments**  
Croatia



**University of Stuttgart  
institute for human factors and  
technology management**  
Germany



**Profactor GmbH**  
Austria

**University of West Bohemia**  
Czech Republic



**Slovak Chamber of Commerce  
and Industry**  
Slovakia



**Pannon Business Network Association**  
Hungary

**ICT Cluster**  
BULGARIA

**Foundation “cluster information and  
communications technologies”**  
Bulgaria



**Chamber of Commerce and  
Industry of Serbia**  
Serbia

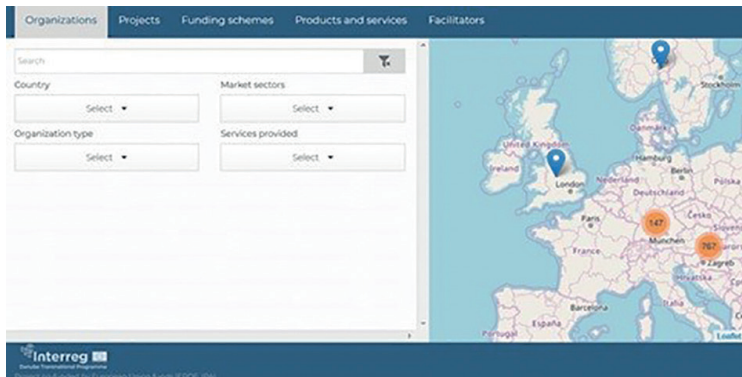


# Mapping Tool

The Smart Factory Cooperation Platform (SFCP), shall support SMEs by providing a geographic overview and give some information about actors, good practices, projects and facilitators and, thus, foster the match between the demand and supply tendencies.



(Click on the logo; you will be automatically redirected to the SFCP.)



Companies and other organizations can and are welcomed to register themselves by clicking on the “Register your organization” button and filling in the requested data and join more than 1200 organizations that are already part of the SFCP.

## Register your organization

General information \*    Contact and logotype    Keywords and description    Additional information    Projects    Products and services

Declaration \*

**General information**

Name \*     Country \* / NUTS2  - Select -    - Select -

Organization type \*  - Select -    Year Established

Market sectors  - Select -    Services provided  - Select -

Address \*

**Alert!** Please provide valid address. Click here to provide address coordinates manually.

# Main Outcomes

Benchmark study covering Smart manufacturing domain in the Danube region

Catalogue of 57 Good practices

Mapping tool providing the matchmaking possibility

E-learning platform with training material related to Industry 4.0

Catalogue of 100 Smart production solutions

10 international learning demonstration workshops

At least 20 vouchers for the technology transfers

Policy instruments developed to help SMEs digitalizing and advancing their production facilities



## Discover more about

### Smart Factory HUB

<http://www.interreg-danube.eu/approved-projects/smart-factory-hub>

### SmartFactoryCooperationPlatform(SFCP)

<http://www.p-tech.si/sfh-mapping/>

### Smart Factory HUB E-learning Platform

<https://elp.iao.fraunhofer.de/moodle/>

## Contact Us

Lead partner Project manager:

**Daniel Copot**

Pomurje Technology Park

E-mail: [daniel.copot@p-tech.si](mailto:daniel.copot@p-tech.si)

web: [www.p-tech.si](http://www.p-tech.si)

Communication manager:

**Renáta Csabai**

Pannon Business Network Association

E-mail: [renata.csabai@pbn.hu](mailto:renata.csabai@pbn.hu)

web: [www.pbn.hu](http://www.pbn.hu)



[www.facebook.com/smartfactoryhub/?ref=settings](http://www.facebook.com/smartfactoryhub/?ref=settings)



[twitter.com/SmartFactoryHUB](https://twitter.com/SmartFactoryHUB)



[www.linkedin.com/in/smart-factory-hub-66183a13b/](http://www.linkedin.com/in/smart-factory-hub-66183a13b/)