



# Motivation & Introduction

**Raluca Danila & Manfred Seitz**  
**Pro Danube International**

**Port Policy Day,**  
**18 October 2017, Budapest**

# Danube Ports and the challenges ahead

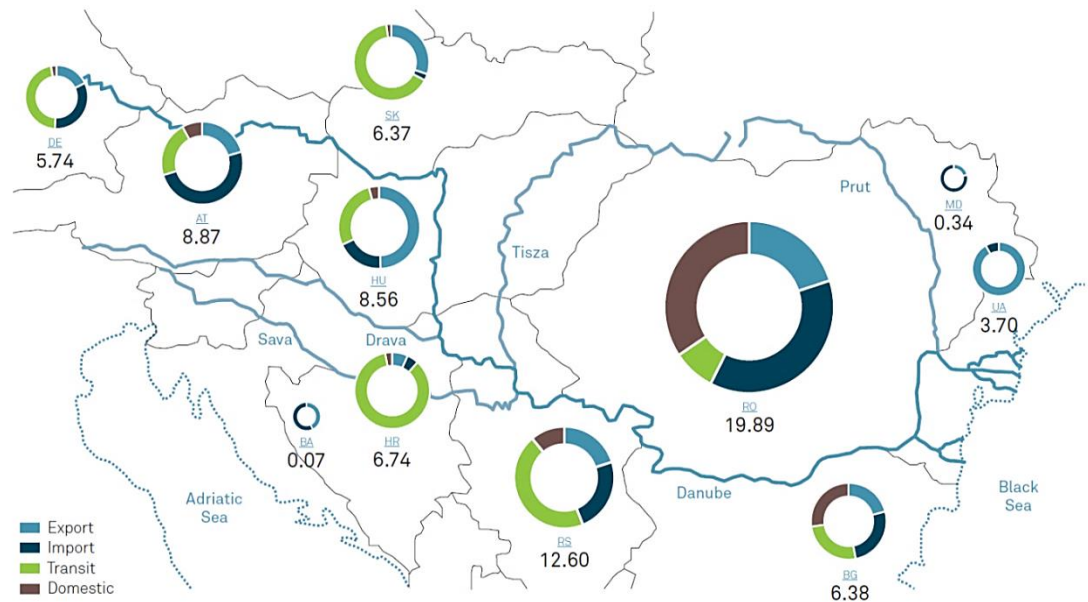
- Approx. 70 ports along 2.414 km of navigable river
- Key elements for a sustainable & efficient transport system
- Port of Constanta as main logistics hub and gateway
- Danube Ports must be considered as catalysts for re-industrialisation and regional growth
- Danube Ports as focal points for European transport & regional policy

## Port of Constanta

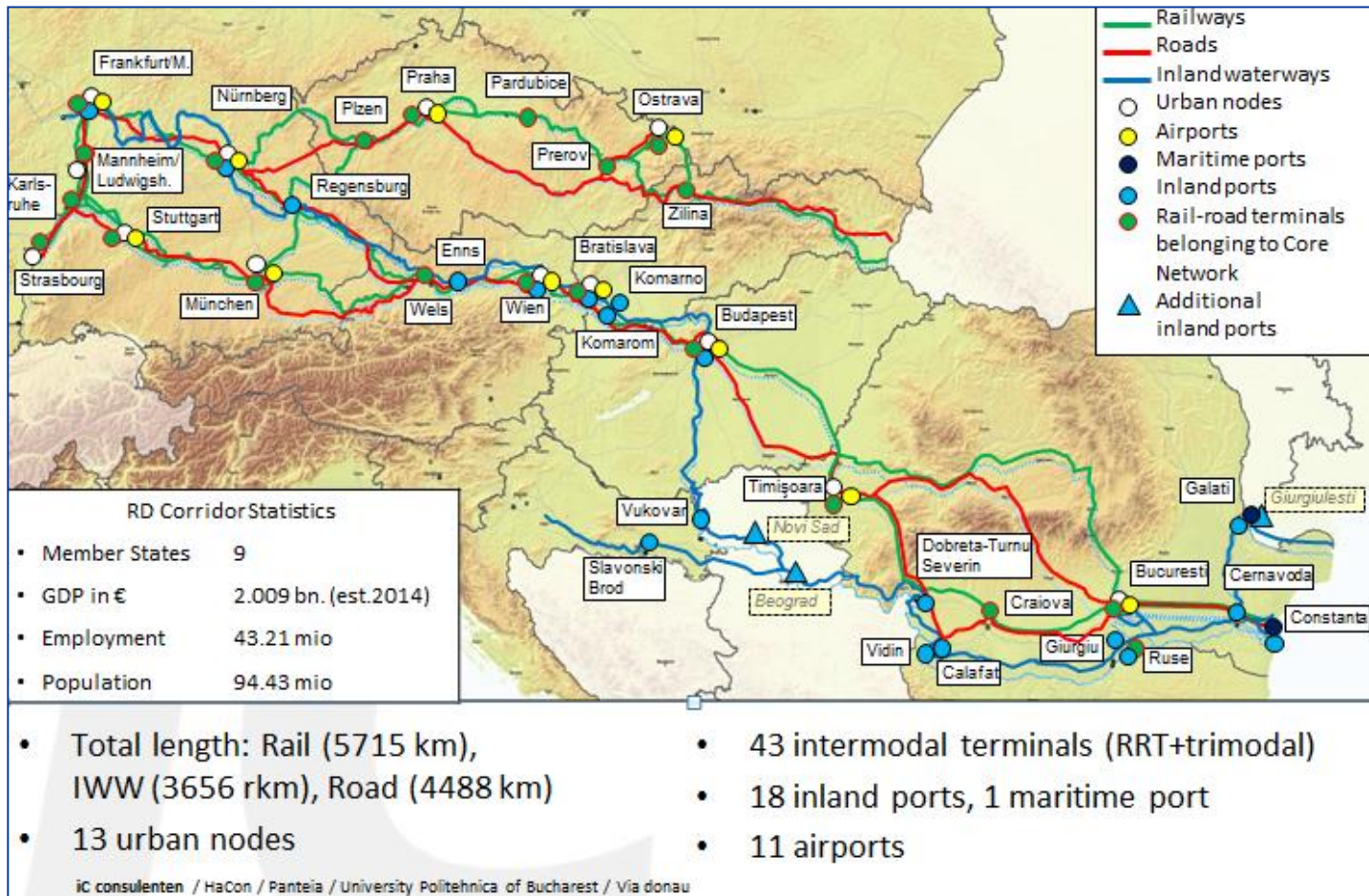
Transport volumes by commodity groups  
2014 (in thousand tons)

Ores (ferrous & nonferrous)	8 553.3
Agricultural	17 420.5
Oil products	4 714.3
Fertilisers	1 742.2
Metal products	1 893.7
Cereals	17 420.5
Foodstuffs and animal fodder	416.1
Machinery, vehicles and other articles	365.7
Seeds, vegetable oils	2 478.3
Chemical products	1 151.1
<b>Total throughput</b>	<b>55 641.9</b>

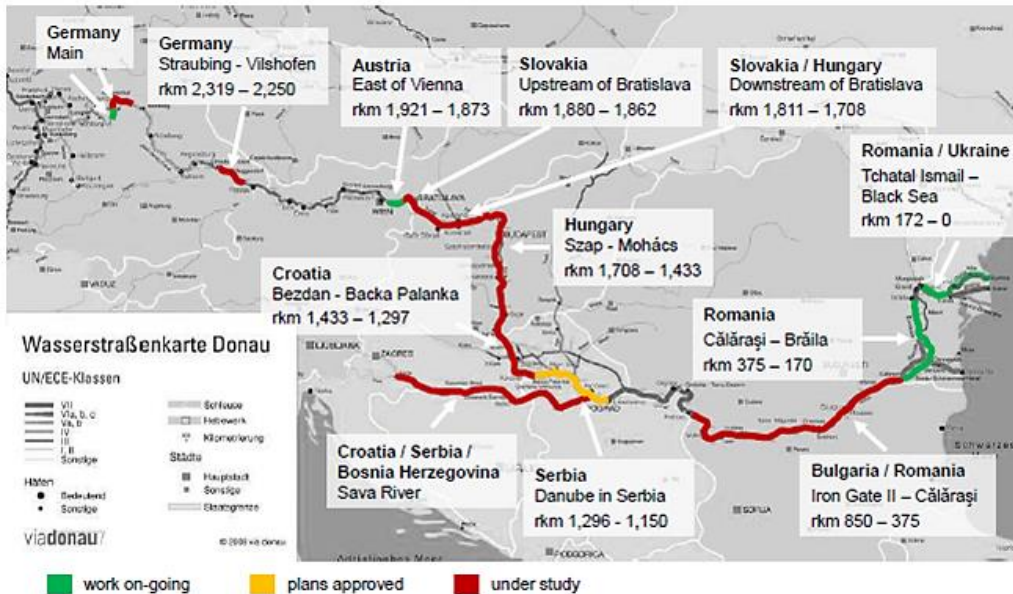
## Freight transport on the entire Danube (2015)



# Core Infrastructure in Danube region needs development



# Investments in IWW and ports in the Danube region



➔ **Overview of infrastructure projects related to IWW fairways**

Source: viadonau, Study on TEN-T Core Network Corridor “Rhine–Danube” Final Report, December 2014

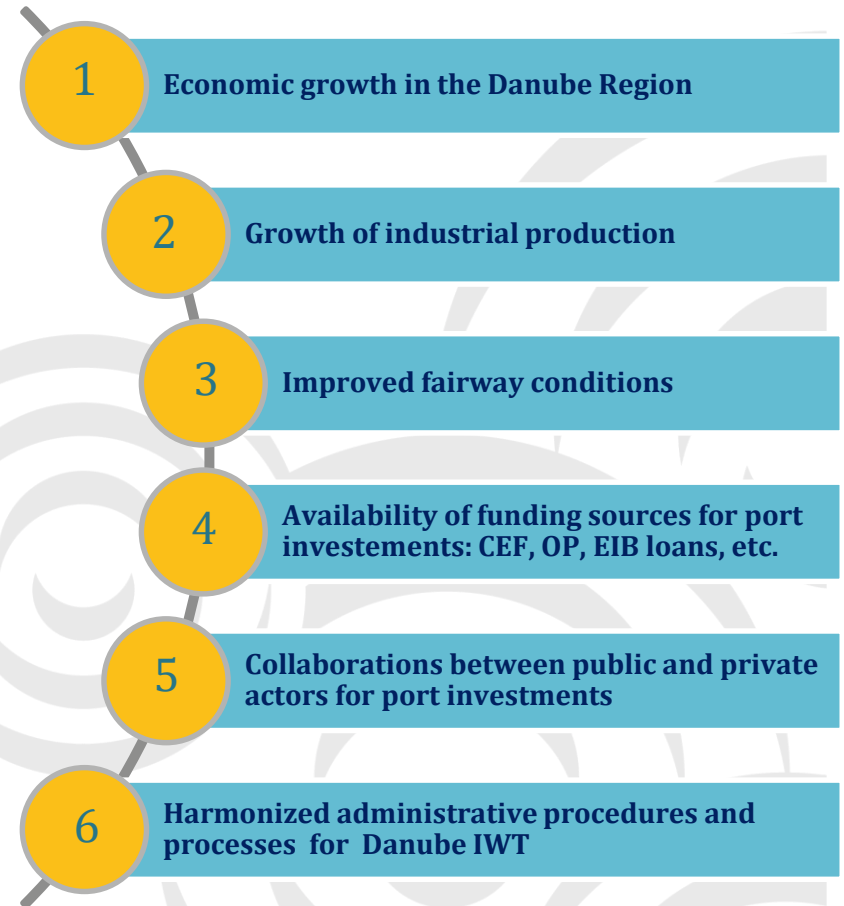
**IWW projects** ←  
 Total: 56 projects (out of which 49 cross-border, 17 multi-country, 10 non-EU)  
 Completion: 7 (2014-2016), 28 (2017-2020), 6 (2021-2025), 4 (2026-2030), 10 (unknown)

**Inland and seaport projects** ←  
 Total: 118 (out of it 16 studies, 87 infrastructure works only / rest mixed, alternative fuels, telematics) Completion: 32 (2014-2016), 85 (2017-2020) 14 (2021-2025), 5 (2026-2030), 9 (unknown)  
 Source: Corridor Development Plan, Update 2017

Inland Waterways (IWW)			Inland & Seaports		
EURO	# Projects	Country	# Projects	EURO	
181	3	AT	15	220.0	
18	5	BG	3	9.2	
764	7	DE	7	69.0	
26	7	HR	6	80.0	
37	5	HU	3	13.0	
865	8	RO	64	2,054.0	
168	3	SK	9	164.0	
21	1	BH	7	22.3	
73	8	SER	1	-	
4	1	UA	0	-	
427	17	Multi-country	3	7.0	
<b>2584</b>	<b>65</b>		<b>118</b>	<b>2,638.5</b>	

## Shortcomings & Opportunities

---

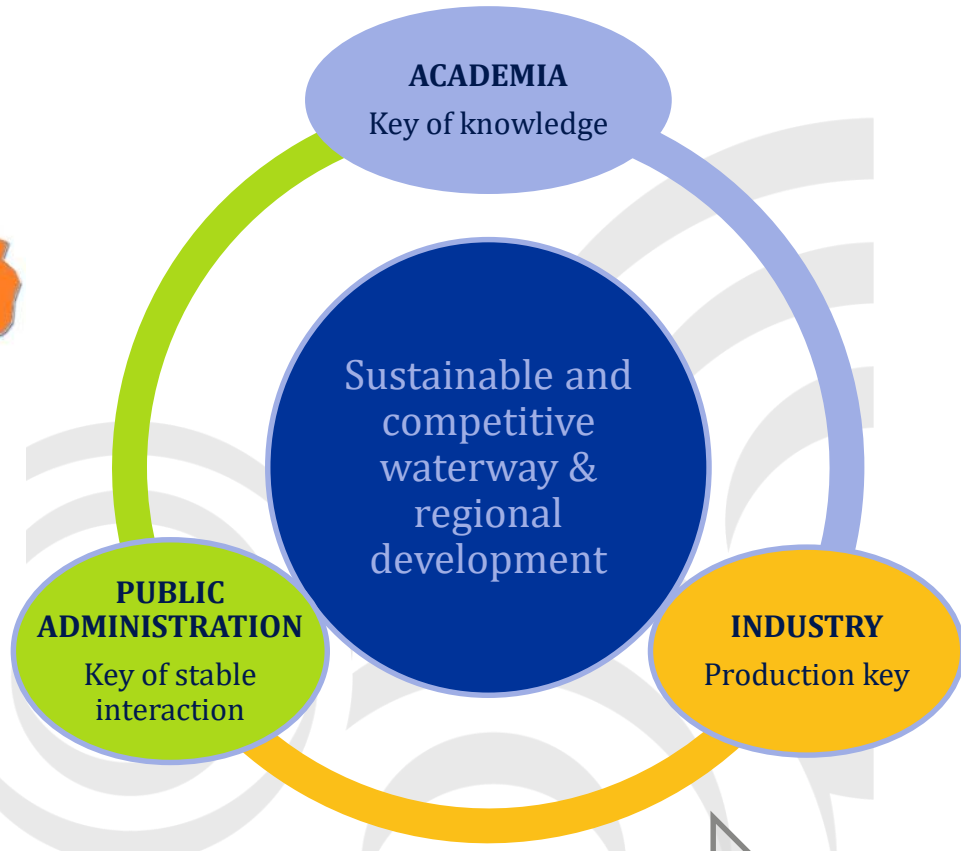


## Project Facts & Figures



### 23 partners, 9 Danube Riparian Countries

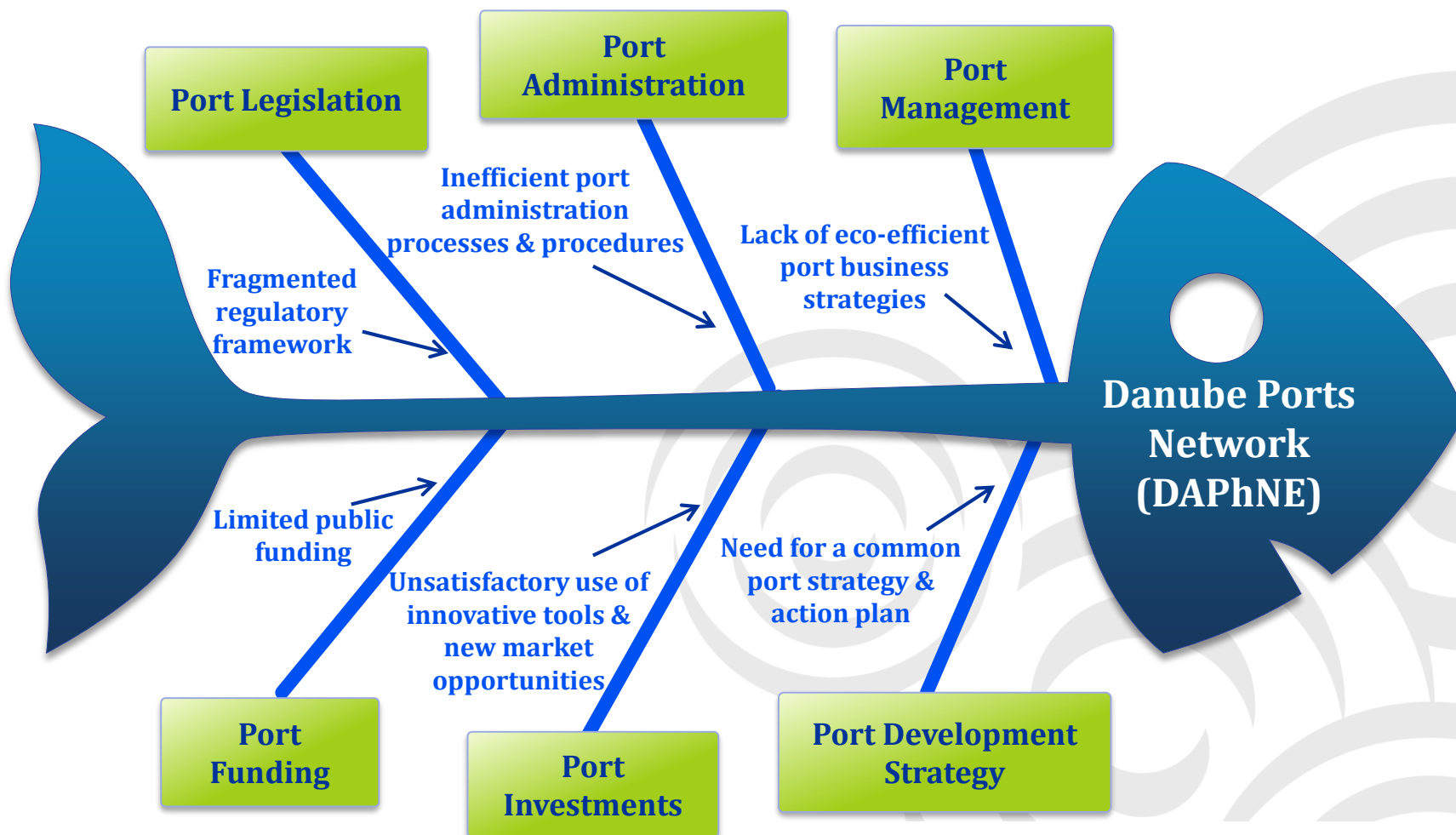
<b>Overall budget</b>	<b>2.985.406,15 EUR</b>
ERDF Contribution	2.415.219,42 EUR
IPA Contribution	122.375,77 EUR
Own contribution	447.810,96 EUR



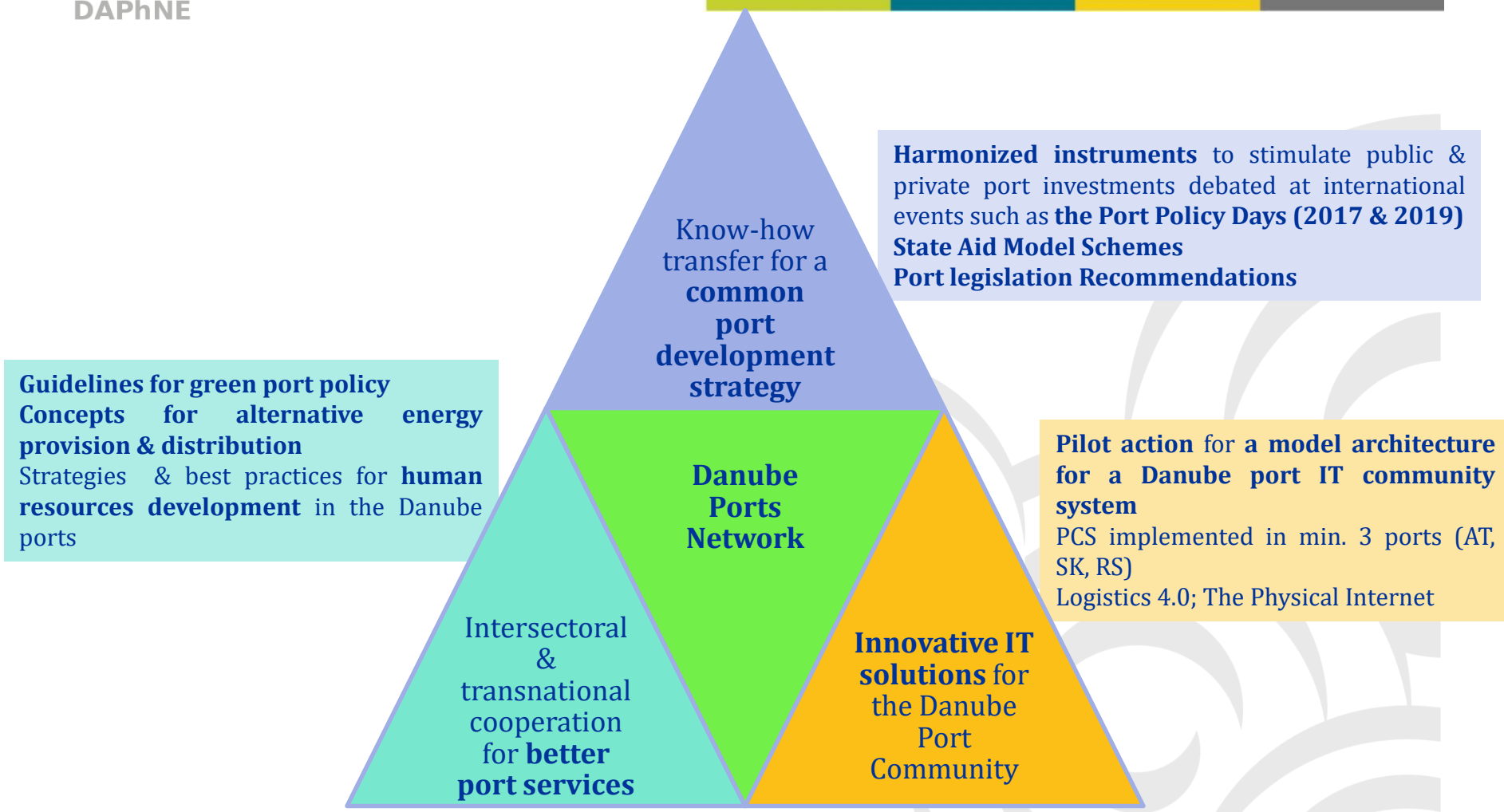
**30 Months**

**1 Jan. 2017 – 30 Jun. 2019**

## Areas of Action



## DAPhNE Outputs





**Thank you for your attention!**  
**The DAPhNE Team**



**[www.interreg-danube.eu/daphne](http://www.interreg-danube.eu/daphne)**  
**Subscribe to our newsletter!**