

# Report for WILDisland Initiative

## WILDisland Initiative

Balázs Tóth 2017.

# Response Statistics

---

	Count	Percent
Complete	17	100
Partial	0	0
Disqualified	0	0
Totals	17	

---

SNR Gornje Pounavlje

Danube Delta Biosphera Reserve

Danube Delta Biosphere Reserve

Donau-Auen National Park

Donauauwald Neuburg-Ingolstadt (Col + LKS ND)

Duna-Drava National Park

Duna-Ipoly NP

Dunajské Luhy

Kopacki rit Nature Park

PA Kalimok-Brashlen

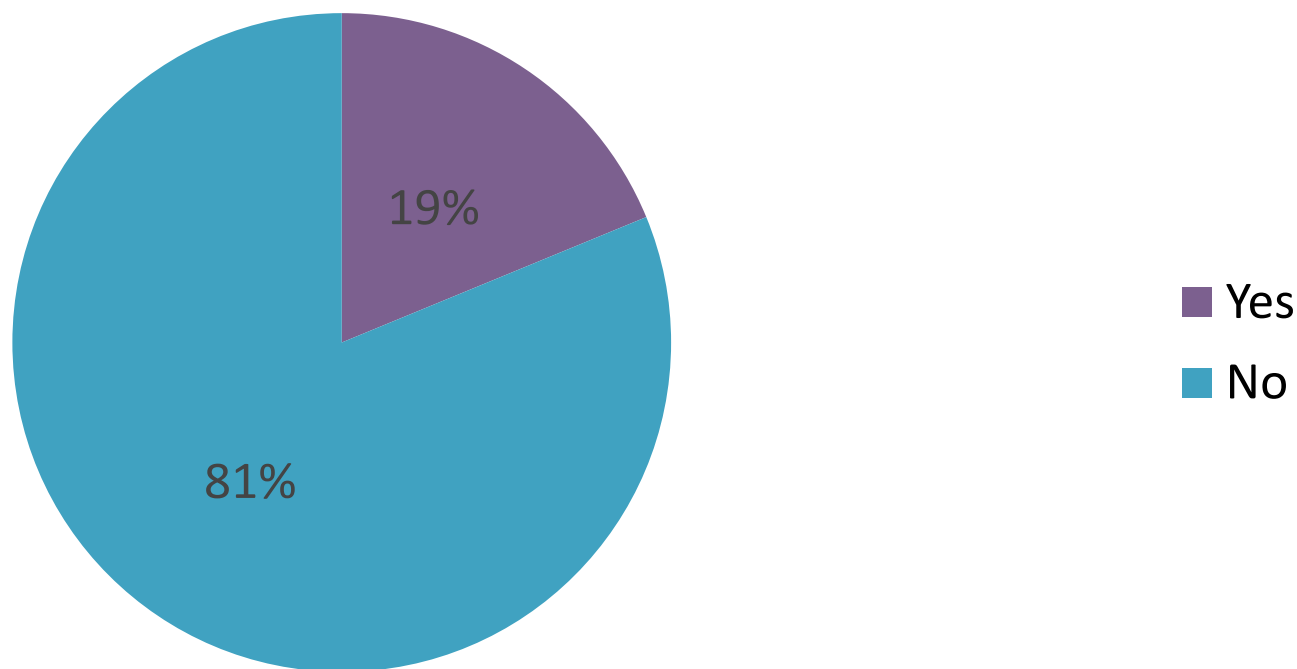
Persina Nature Park

Protected Landscape Area Danube Floodplains

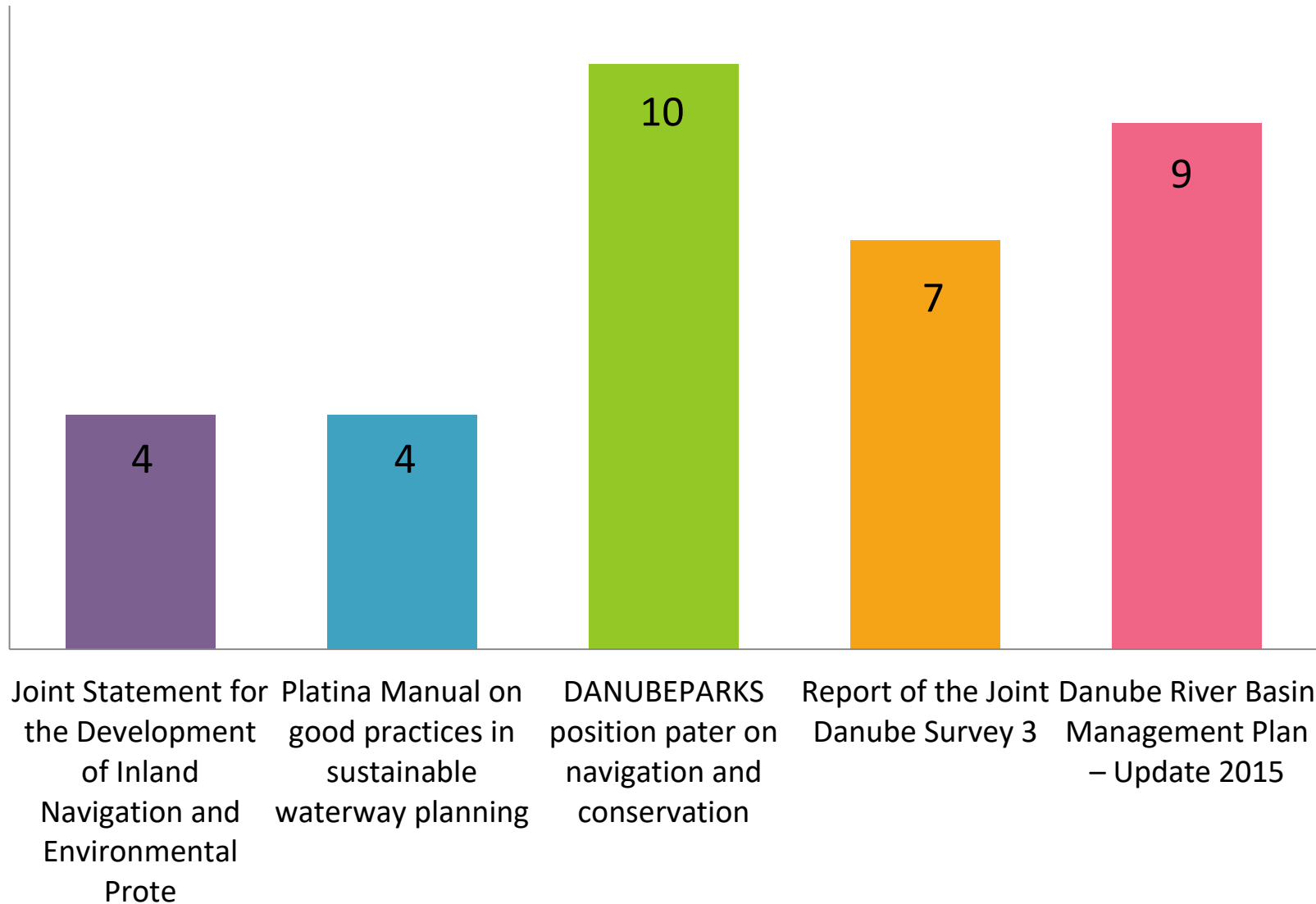
S

Wachau

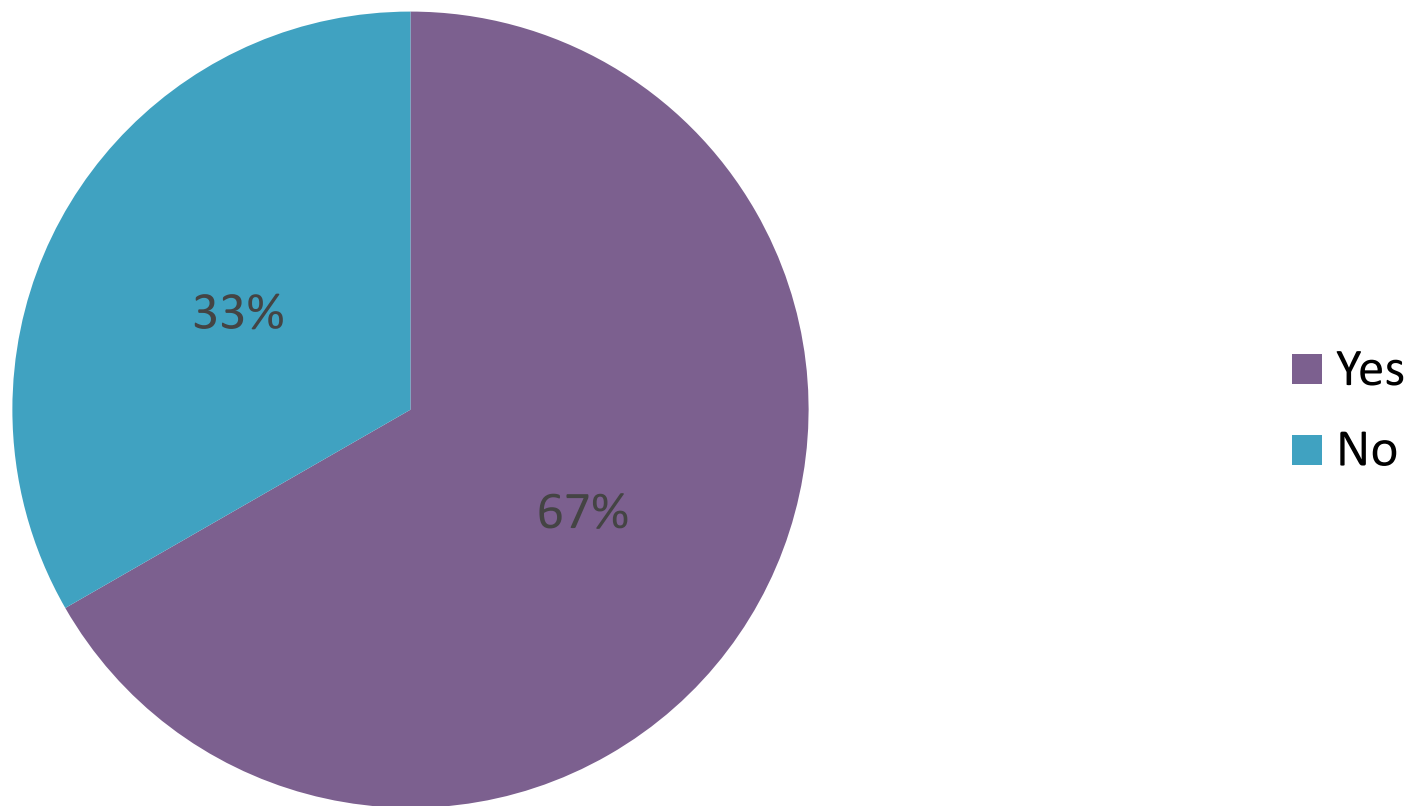
Do you have an expert in your Protected Area administration who is dealing with cross-sector tasks in the field of inland navigation and waterway?



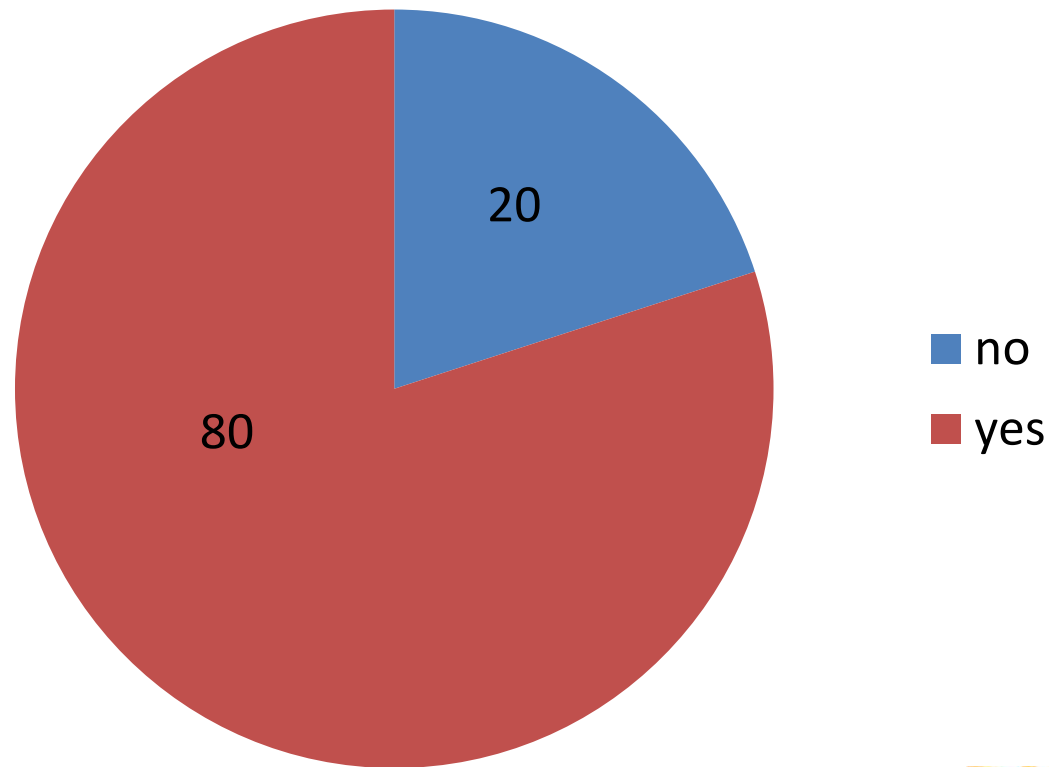
# Which of the listed documents on navigation and nature conservation are you aware of and have you ever read?



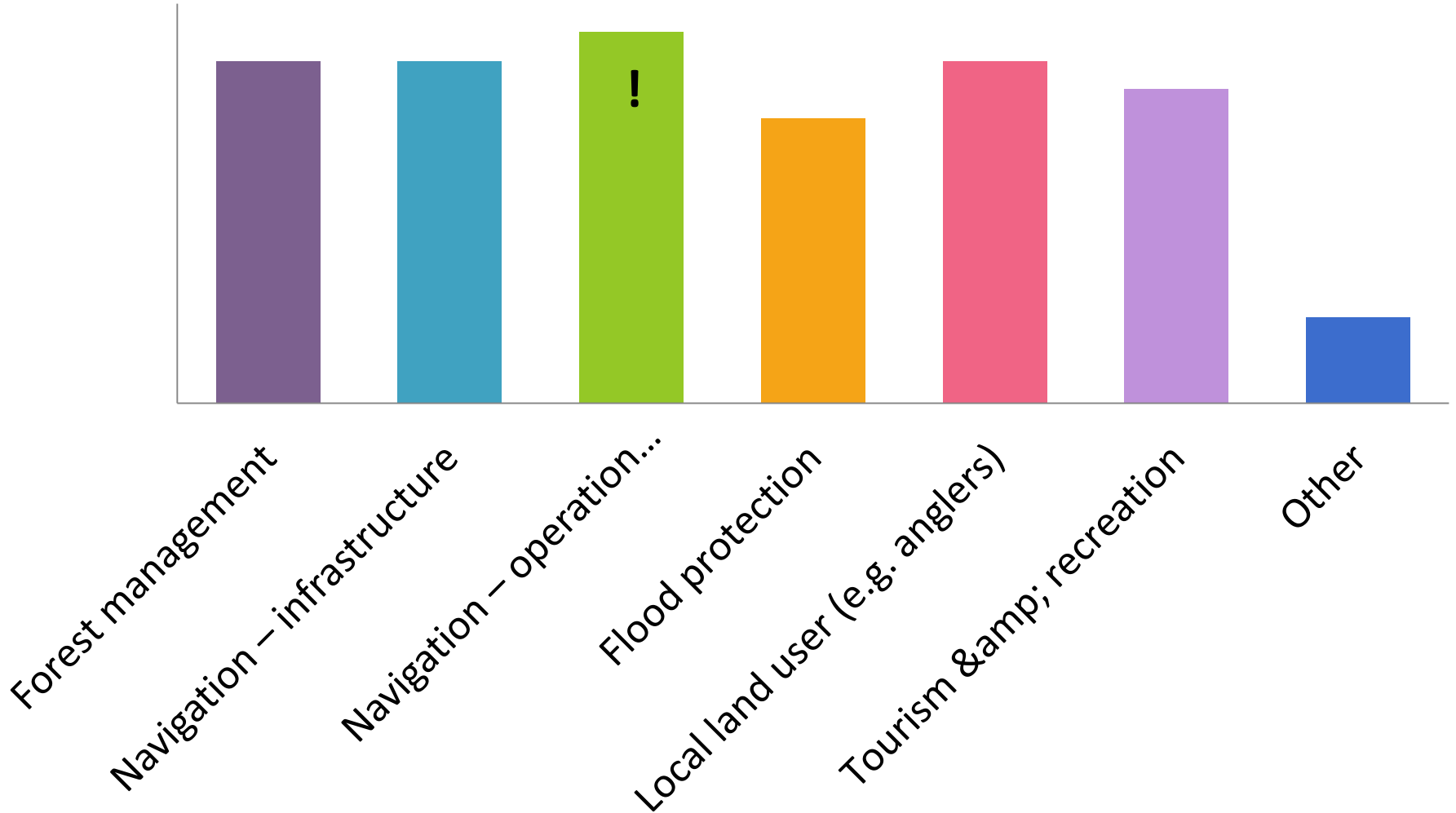
Do you have any systematic monitoring programme(s) for river habitats and/or species?



In your Protected Areas (or nearby), do you have any Danube section(s) which is (are) of specific value for nature conservation according to existing monitoring results, scientific papers or experiences of experts?

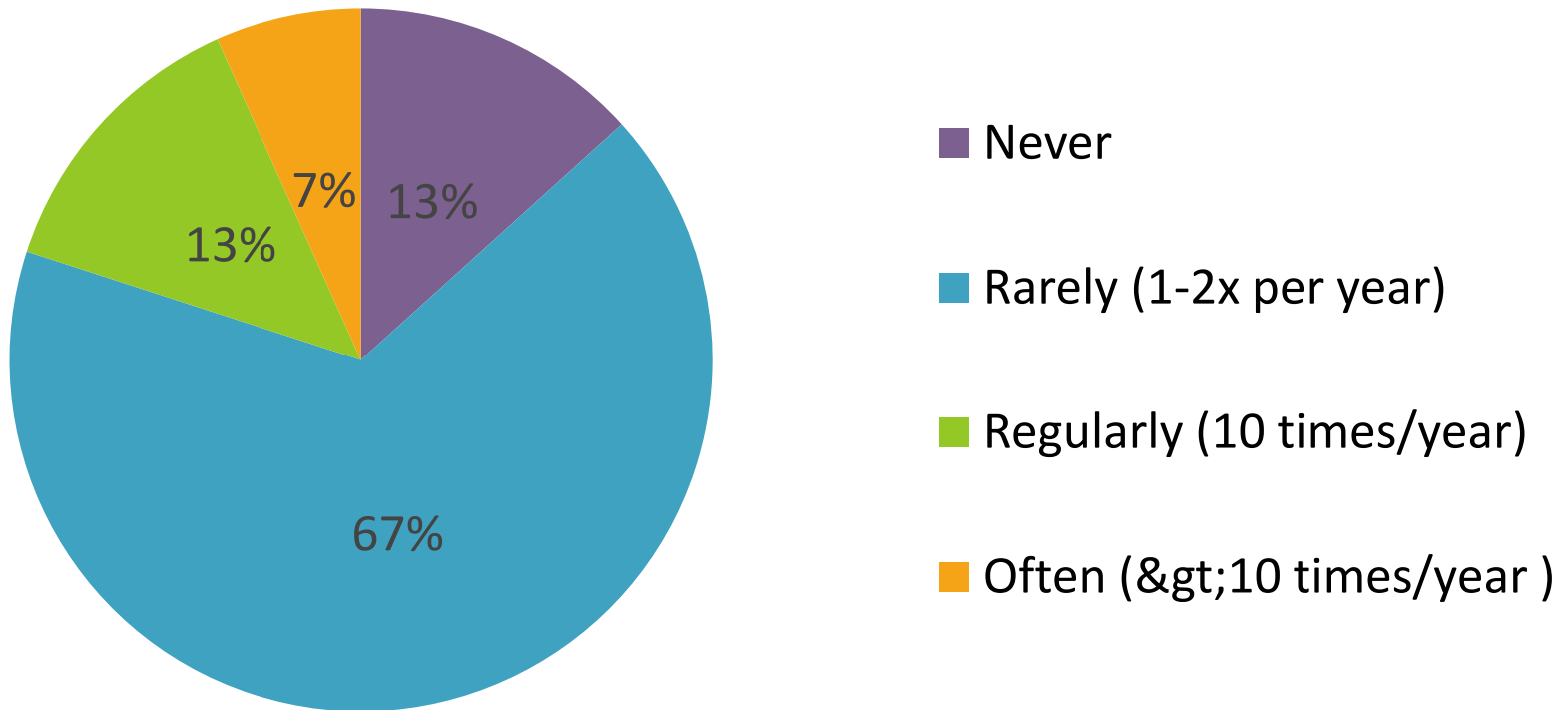


Which sector has the strongest impact on river (!) habitats in your Protected Areas/in your section in the previous 10 years? Please rank from 1 - 5 (1 is highest, 5 is lowest)

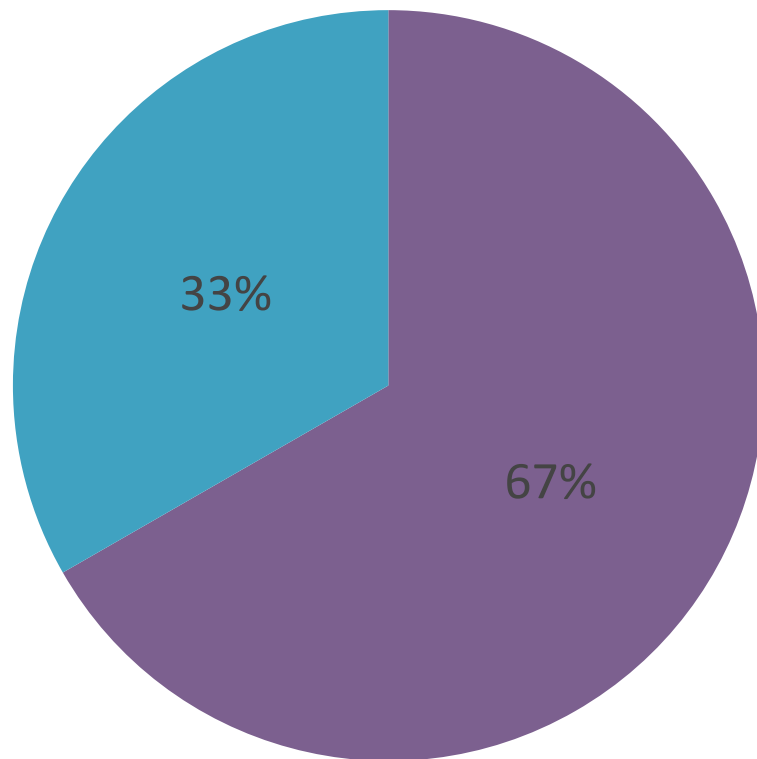




How often do you (respectively the expert team of your Protected Area) have official meetings with colleagues from the waterway/navigation sector?

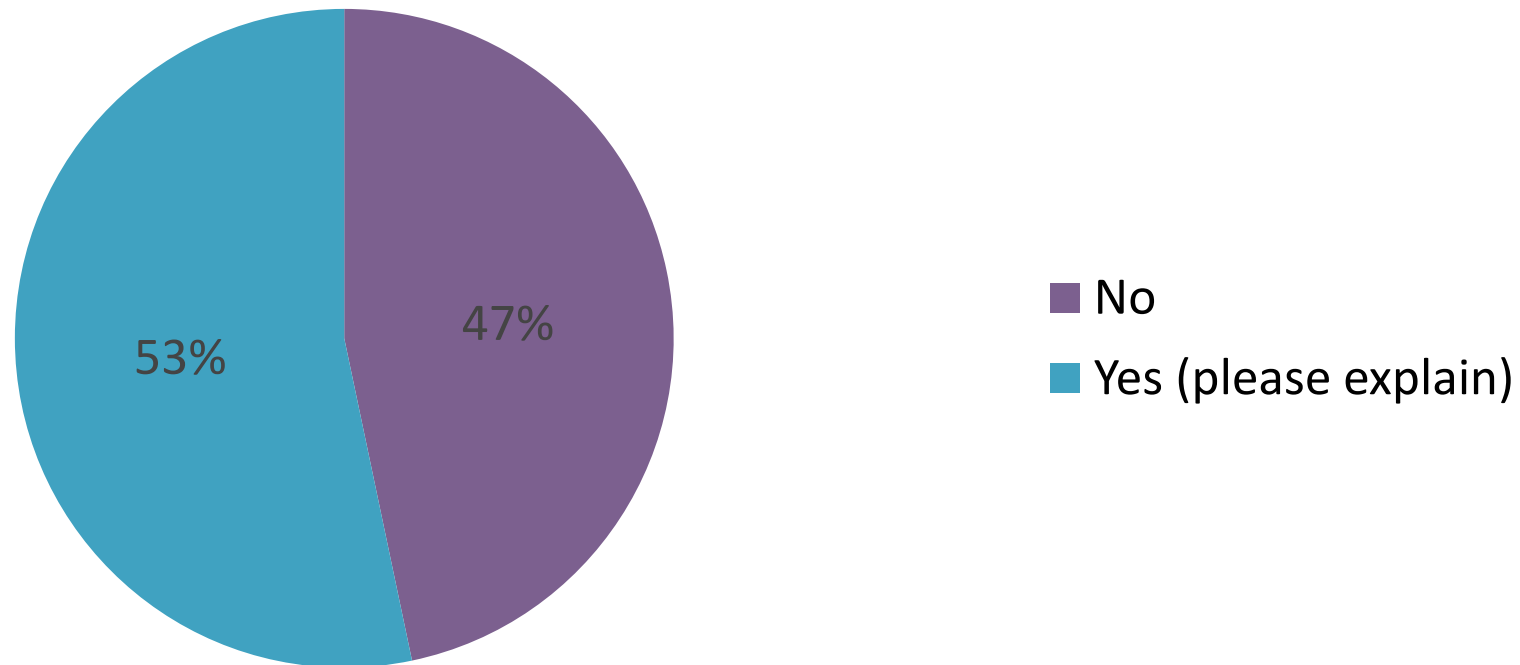


Can you give 1-3 examples of joint projects and practical examples of successful cooperation among nature conservation (e.g. Protected Areas) and waterway/navigation sector in your section (“good practice”) in the previous 10 years?

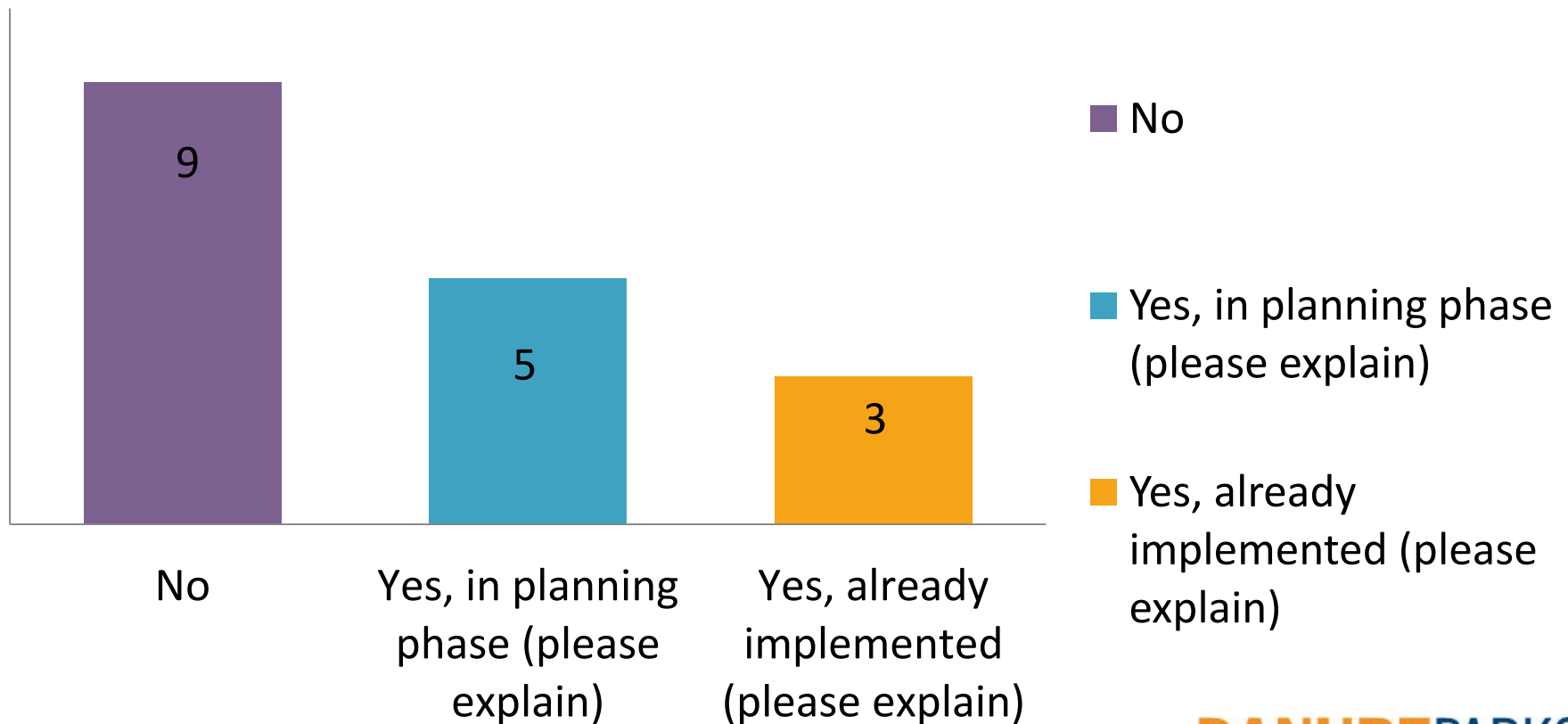


- No, we don't have any
- Yes (please explain)

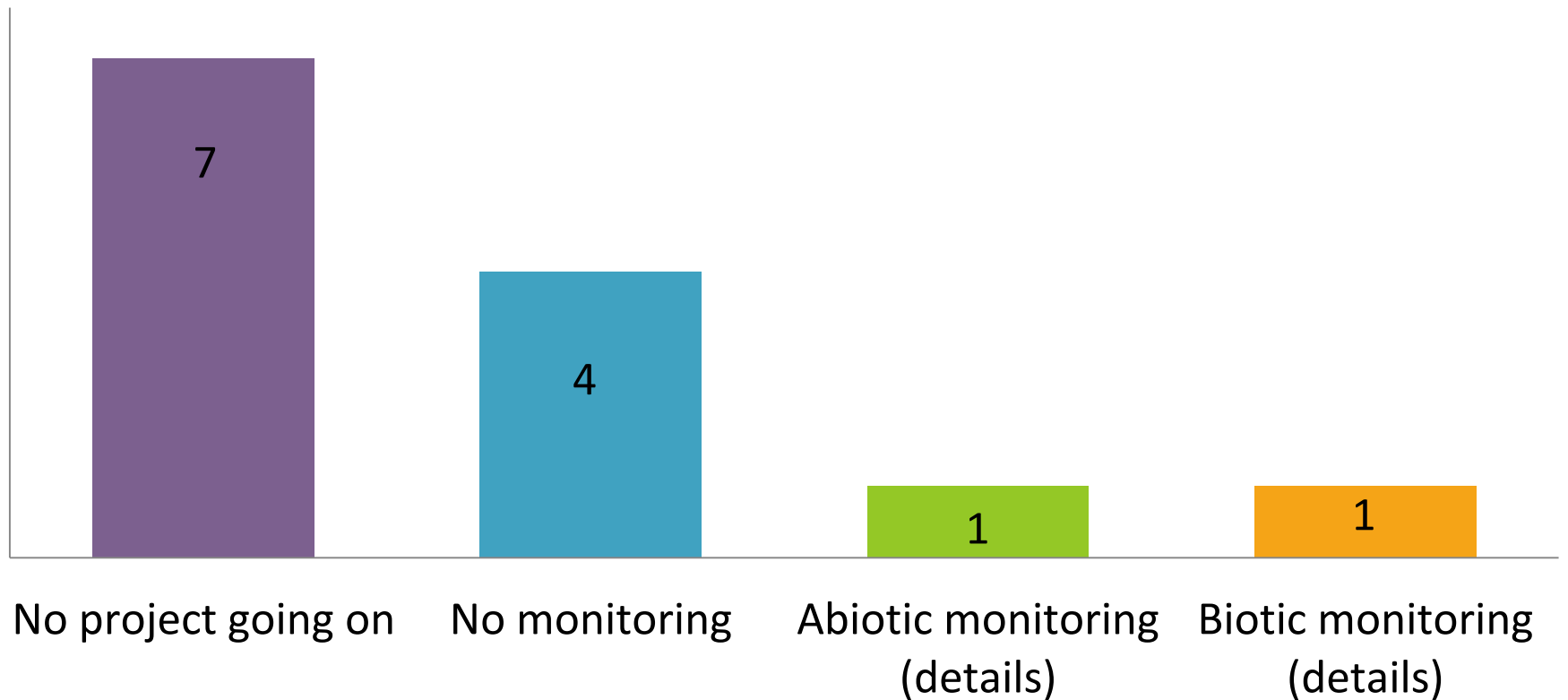
Can you give 1-3 examples of “bad practice” and critical issues on nature conservation and navigation in your section in the previous 10 years?



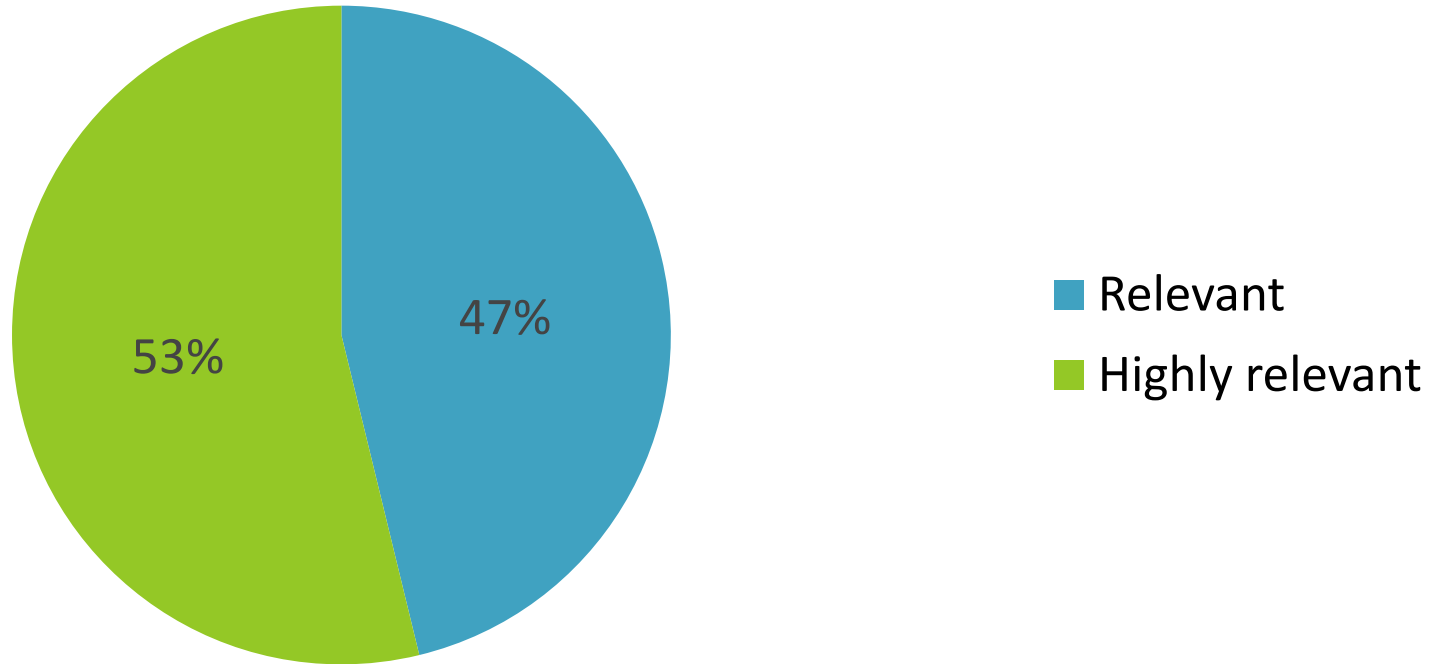
# Is, in your opinion, any critical waterway project going on in your river section?



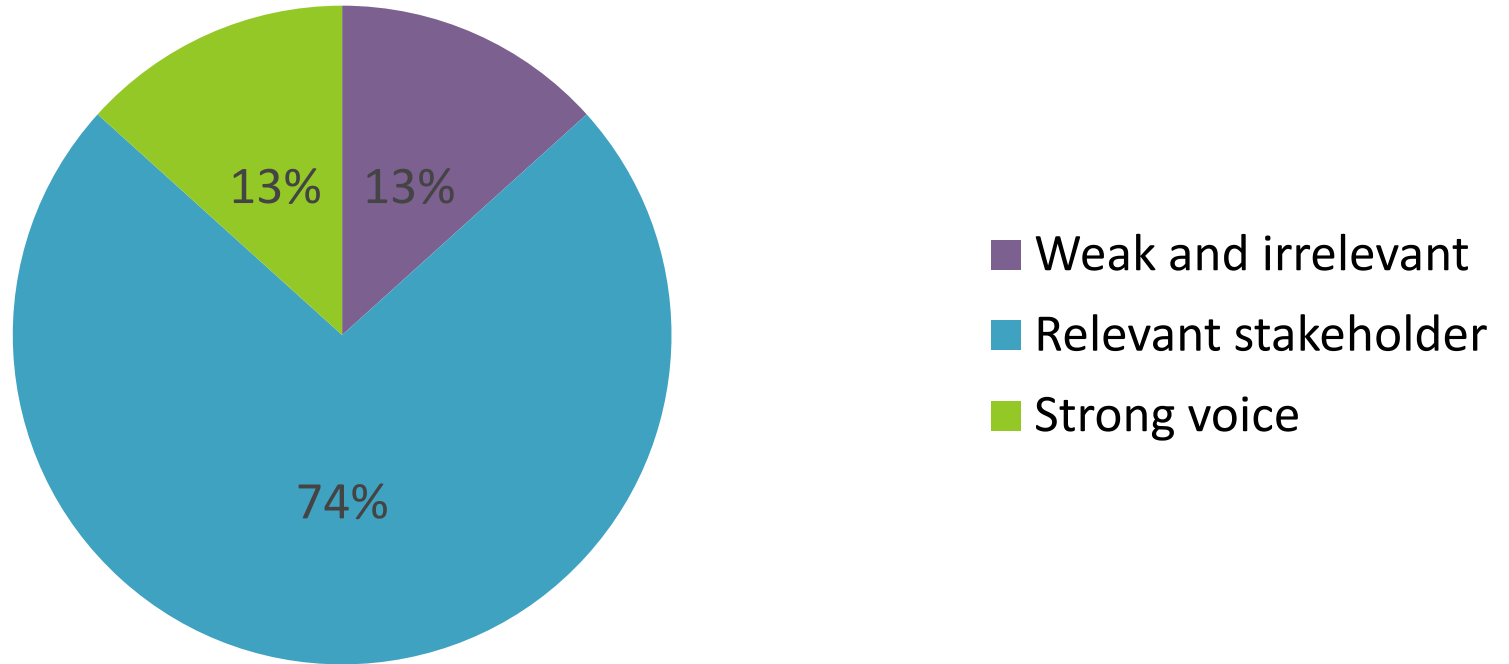
For ongoing or implemented waterway projects (see question above), is there a serious monitoring going on (or already finished) which you are aware of?



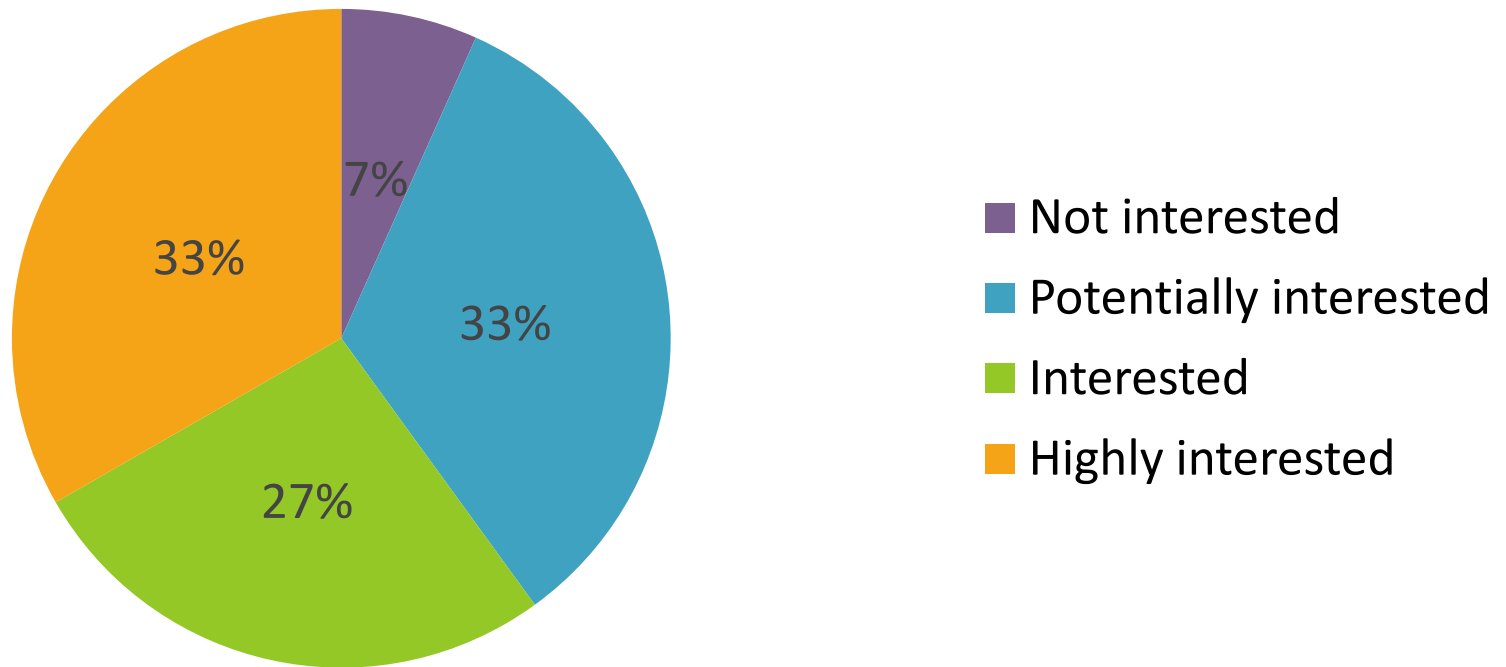
In your opinion, how relevant is the cross-sector cooperation with the navigation sector for Danube Protected Areas?



In your opinion, how strong is the standing of DANUBE PARKS in the field of conservation and navigation?



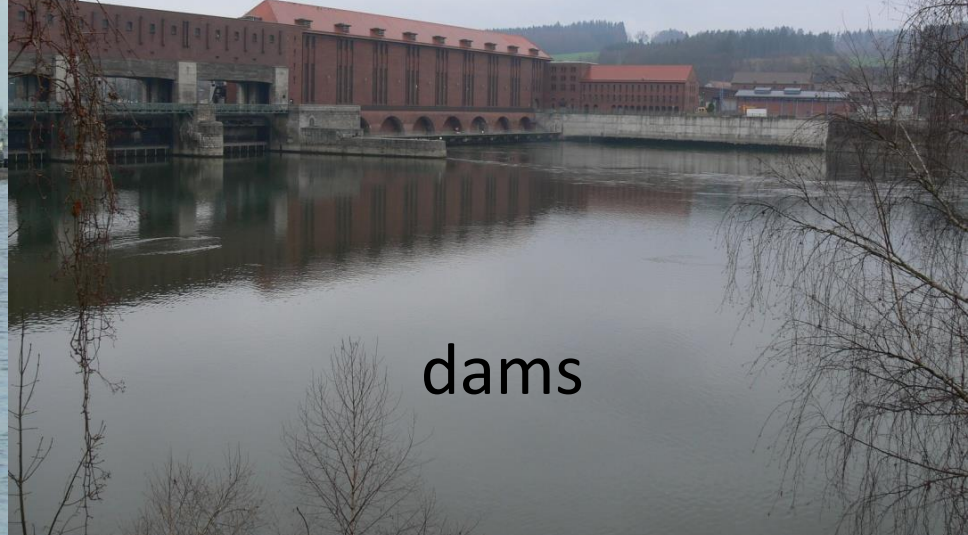
Are you interested to work on a Danube-wide follow-up project on conservation & navigation, or even to set up a transnational project together with the waterway sector?





# Navigation impacts on nature (examples)

# River regulation



dams



structures



dredging

## Wave-stress

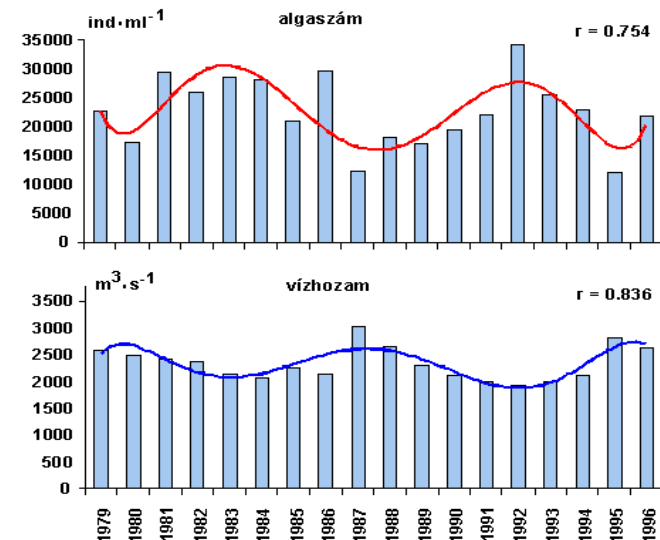
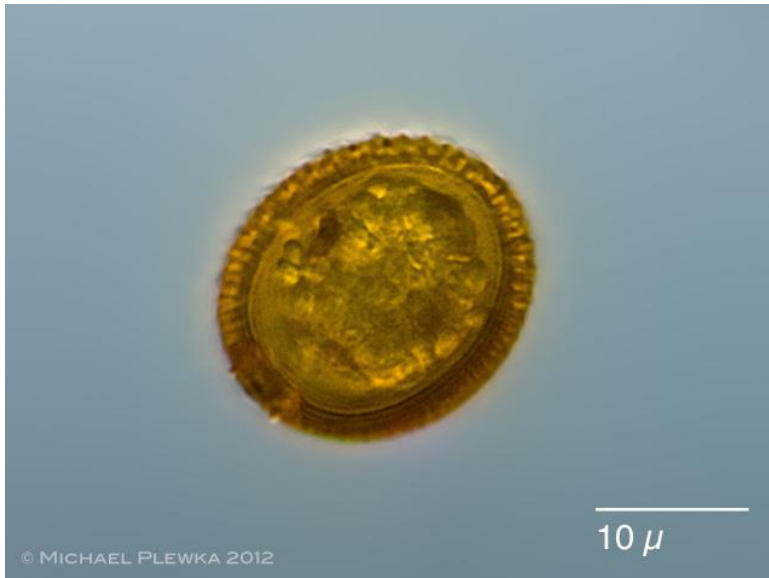
Drifting yoy (young of year) fish – even to the bank

Causing turbulences – fine sediment movement

# Impacts of turbulence on water organisms

## Phytoplankton

1. Fine sediment (fény).
2. Dispersion of dissolved gas, nutrients.

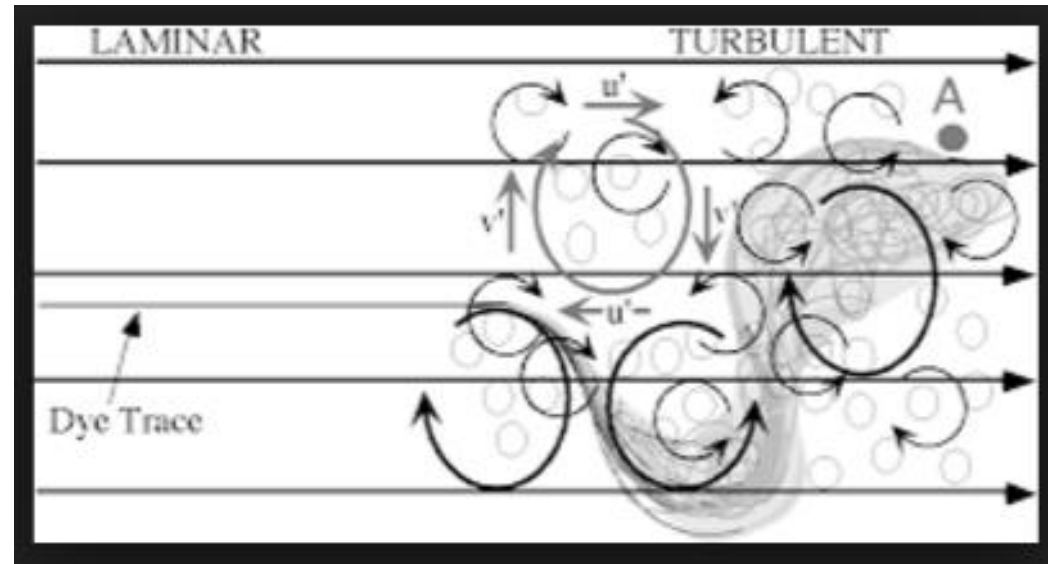


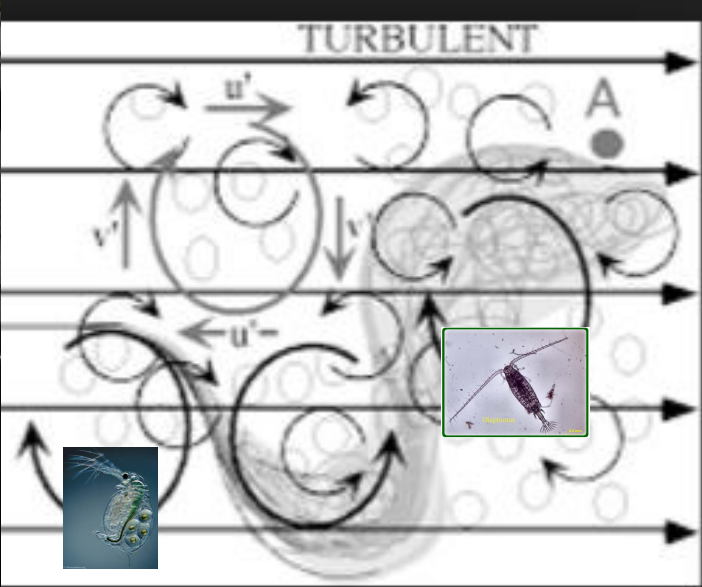
Kiss-Keve Tihamér -

<http://www.szigetkoz.biz/monitoring/MTA1996/6kissk.htm>

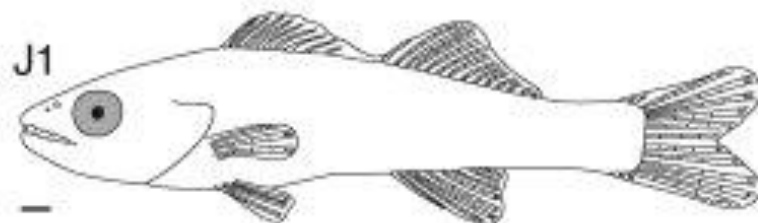
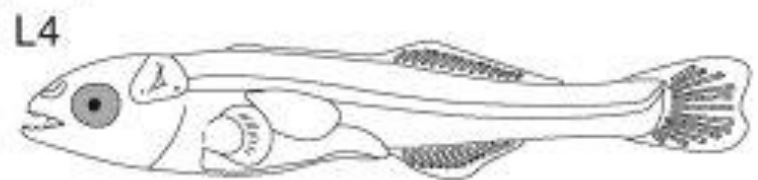
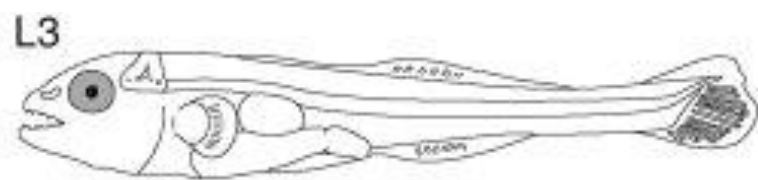
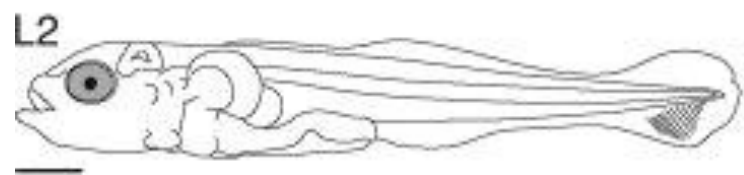
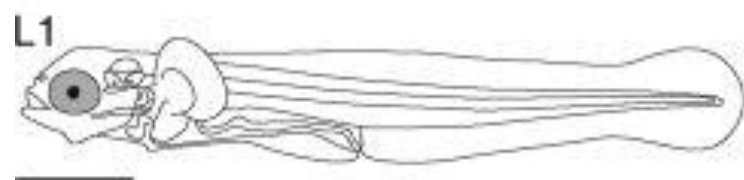
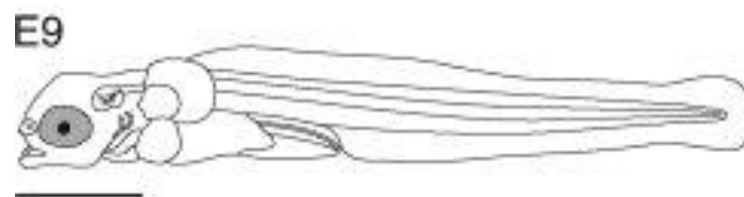
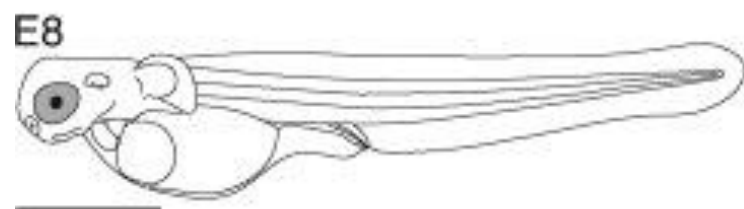
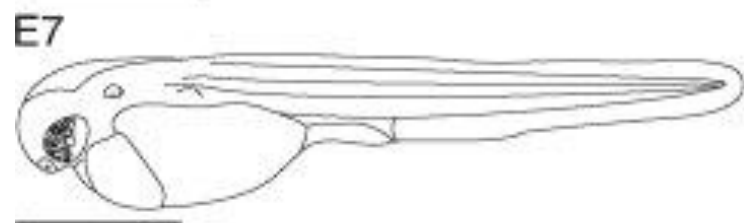
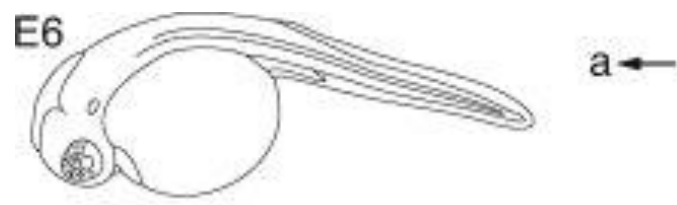
# Zooplankton

1. Sensitivity – Body shape
2. Taking particulate food













www.alamy.com - EBRAGP

## Green sturgeon *Acipenser medirostris*

Egg, 4.0 - 4.6 mm, dialates up to 7.0 mm



0 dps

2 dps

3 dps

5 dps

6 dps



14.6 mm



16.0 mm



19.5 mm



22.5 mm



24.2 mm



26.2 mm



29.0 mm



35.0 mm

Reclamation photos by  
René Reyes, Tracy Fish  
Collection Facility, Byron, California

**RECLAMATION**  
Managing Water in the West





KUTZERA-HIRZINGER, V, SCHLURERMANN, E, ZORNIG, H, WEISENBACHER, A, SCHABUSS, M, SCHIEMER, F. (2008): Potential effects of navigation-induced wave wash on the early life history stages of riverine fish *Aquatic Sciences* pp: 1-9.

WOLTER, C, ARLINGHAUS, R. (2003): Navigation impacts on freshwater fish assemblage: the ecological relevance of swimming performance *Reviews in Fish Biology and Fisheries* 13: 63-89.

WOLTER, C. (2001): Rapid changes of fish assemblages in artificial lowland waterways *Limnologica* 31: 27-35.

WYSOCKY, L, E, DITTAMI, J, P, LADICH, F. (2006): Ship noise and cortisol secretion in European freshwater fishes *Biological conservation* 128: 501-508