

DANTE

Improving Administrative Procedures and Processes for Danube IWT



Danube Transnational Programme

DANTE

Real people – Real stories
of Danube navigation



Project co-funded by European Union Funds (ERDF, IPA)

September 2017, Vienna



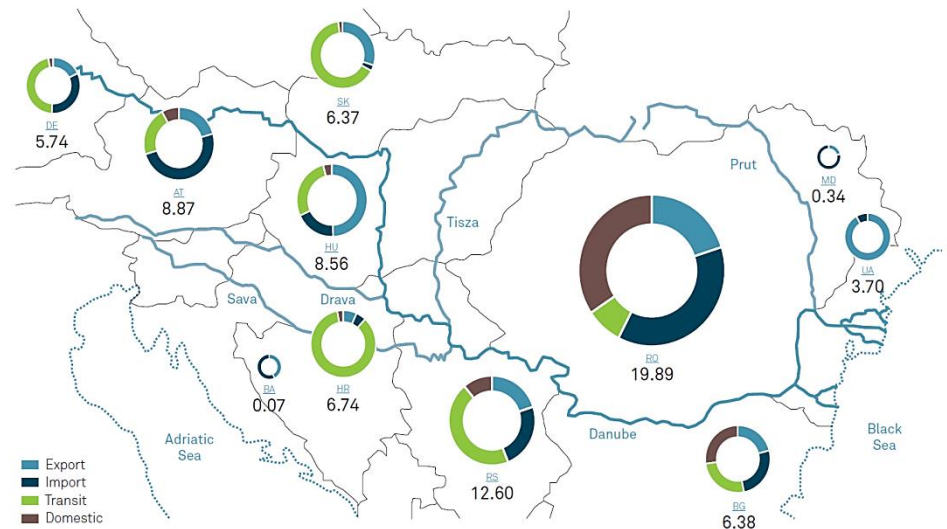
Danube Waterway: High Potential – Numerous Challenges

Strengths

- Danube serves an economic area of circa 90M inhabitants
- Connects CE & SEE with growing markets in Black Sea Region
- Environmentally friendly transport corridor
- Can provide cost-effective logistics for land-locked industries ensuring competitiveness and jobs

Challenges

- Ensure standards for waterway maintenance
- Elimination of infrastructure bottlenecks
- Promotion of investment in Danube Ports and unlocking their economic potential
- Modernize Danube fleet
- Reduce logistics costs by elimination of administrative barriers → DANTE



Freight transport on the entire Danube (source: viadonau, 2015)





Introduction to the DANTE project

DANTE – Improving Administrative Procedures and Processes for Danube IWT project is co-funded by European Union Funds (ERDF, IPA) under the Danube Transnational Programme and will run for 30 months (January 2017 – June 2019). It is implemented by a transnational consortium of 16 co-funded organisations and 12 associated strategic partners (public authorities, consulting companies, universities and NGOs) from 10 European countries.

More at: www.interreg-danube.eu/dante

DANTE aims at identifying and eliminating administrative barriers for inland waterway transport (IWT) on the Danube & its navigable tributaries as a joint initiative of the private sector and the national public authorities responsible for these barriers. **DANTE** focuses on five thematic areas:

- (i) Border Police, Tax & Customs
- (ii) Navigation / traffic control authorities
- (iii) Port authorities / administrations
- (iv) Waterway and Canal administrations
- (v) Other relevant authorities (e.g. health control, disaster management, etc.)

Challenges ahead (1)



“Administrative barriers and related fees in the logistics of goods and passengers on the Danube & its navigable tributaries are major obstacles for wide-scale and efficient use of the river as main transport axis of the region. **DANTE** is one important step towards tackling, mitigating and abolishing the most important administrative barriers in a coordinated and transnationally integrated manner.”

Alexandru Capatu, President
Pro Danube International





Challenges ahead (2)

“The Danube is a unique value of Europe with a great potential to be used for the environmentally friendly mode of transport – inland waterborne transport. We at the Danube Commission contribute to further shape a successful institutional framework. One important element of this roadmap is to reduce the administrative barriers – this is why we for the first time in our history joined such a project as active partner.”

Petar Margic, General Director
Secretariat of the Danube Commission



Project objectives to be achieved



“By improving administrative procedures and by reducing bureaucratic processes as well as related charges & fees for IWT operations, **DANTE** aims for harmonized regulations and simplified administrative processes of transport & transshipment operations in line with the “Same River-Same Rules” concept of Pro Danube. **DANTE** partners will collect and analyse barriers on national level, structure them into consolidated reports, propose solutions and discuss these with the competent authorities on a national and transnational level.

In addition, we created a transnational IWT barrier reporting tool to provide an interface for the stakeholders of Danube navigation to report administrative barriers that they have experienced, but also to name positive experiences which could serve as best practices.

The inputs of the external Danube experts will be analysed by the **DANTE** partners, and further utilized to eliminate these barriers in order to ensure the smooth and predictable way of the logistic processes using the river Danube.”

Manfred Seitz, General Secretary
Pro Danube International



Project co-funded by European Union Funds (ERDF, IPA)

The industry needs...

Leonard Cotiga, Executive Director , Romanian River Ship Owners and Port Operators Association

“Being a partner in the life of the **DANTE** project ensures that the needs of the sector will be taken up and further supported. We mobilise our efforts not only to identify problems, but to give proper answers as well! This shall be straight to the point information requests from the authorities to be answered in a simple way once during a journey from Constanta to Linz.”



Atilla Bencsik, President, Hungarian Federation of Inland Waterway Freight Forwarders

“Logistics nowadays play an extremely important role in all of our lives. Inland vessels shall take over a large portion of goods coming to Europe with maritime ships and also deliver European products to maritime ports. In order to achieve this on the desired level, Danube navigation stakeholders shall be provided with efficient procedures to administer the transport!”



The industry needs...

Catalin Tiganus, Commercial Director NAVROM

“More than 40 million tons of cargo is being transport yearly on the Danube. We have to modernise the entire Danube transport system because otherwise we will be squeezed out of the market. We at NAVROM continuously modernise our fleet and we are very keen on using modern tools to report our voyages and the related information. This will reduce our waiting times and costs, thus we can offer higher level services to our customers.”



Ernő Major, Captain

“We are travelling all around European waterways and spending too much time with paperwork. In case that this work is simplified and harmonised, I am sure that our companies can offer better and less costly solutions to our clients and waterborne transport can regain its prestige and recognition as it had in the past.”



Radu Comanici, Managing Director Danube Cruises Romania



“Tourism on the Danube and its tributaries is a quickly developing industry. We are happy to show Danube-riparian regions to people coming from all over the world. Our passengers and crews are happy when less time needs to be spent with administration, and all can enjoy safe trips!”



Authorities agree



Pol. Lt. István Barnácz, Hungarian Danube Water Police Captaincy



“It is our mutual interest as law enforcement organisation and the shipping sector to use simple and harmonised tools to monitor and control the flow of traffic. We welcome all initiatives that make use of state-of-the-art solutions to support the sector in the proper reporting for the sake of the safe and predictable Danube waterborne transport.”

Bernd Birkhuber, Austrian Ministry for Transport, Innovation and Technology



“River information services are designed and implemented to support inland waterborne traffic and transport management. Danube countries are showing several best practices in this field and I am glad that **DANTE** aims for solutions that make use of this, providing benefits to strengthen the position of Danube transport in the global network.”

DANTE delivers the means

Transnational IWT barrier reporting tool Electronic Reporting Tool for Administrative Barriers

The transnational IWT barrier and good practise reporting tool is the first output of the DANTE project that is setting the background to collect inputs from the IWT stakeholders. This innovative, multi-language tool enables the state-of-the-art way of mapping the every-day barriers of the actors in IWT and result in a database that will work as basis for the analysis and recommendations.



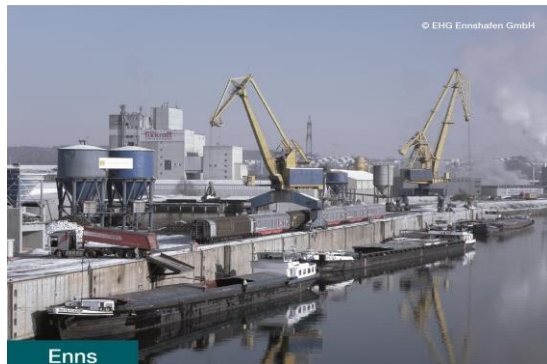
www.prodanube.eu/administrativebarriers



Project co-funded by European Union Funds (ERDF, IPA)

Conclusion by Mr Alexandru Capatu

*“The work of **DANTE** shall result in reduced time losses and savings of costs caused by ineffective administrative regulations & processes which generate unnecessary financial burden for Danube businesses. The achievements together can lead to a better position of inland waterway transport in the modal split by fostering the channelling of the growing transport demand into IWT as the environmentally-friendly low-carbon mode of transportation.”*





Contact
Pro Danube International
Handelskai 265, 1020, Vienna
Mr Robert Rafael – Project Manager
rafael@prodanube.eu