

GREEN DANUBE

**Integrated transnational policies and practical solutions
for an environmentally-friendly Inland Water Transport system
in the Danube region**



Introduction to DANTE & DAPhNE
Robert Rafael

*23 February 2017,
Constanta*

Project co-funded by European Union Funds
(ERDF, IPA)





Green Deal: Rationale & Concept



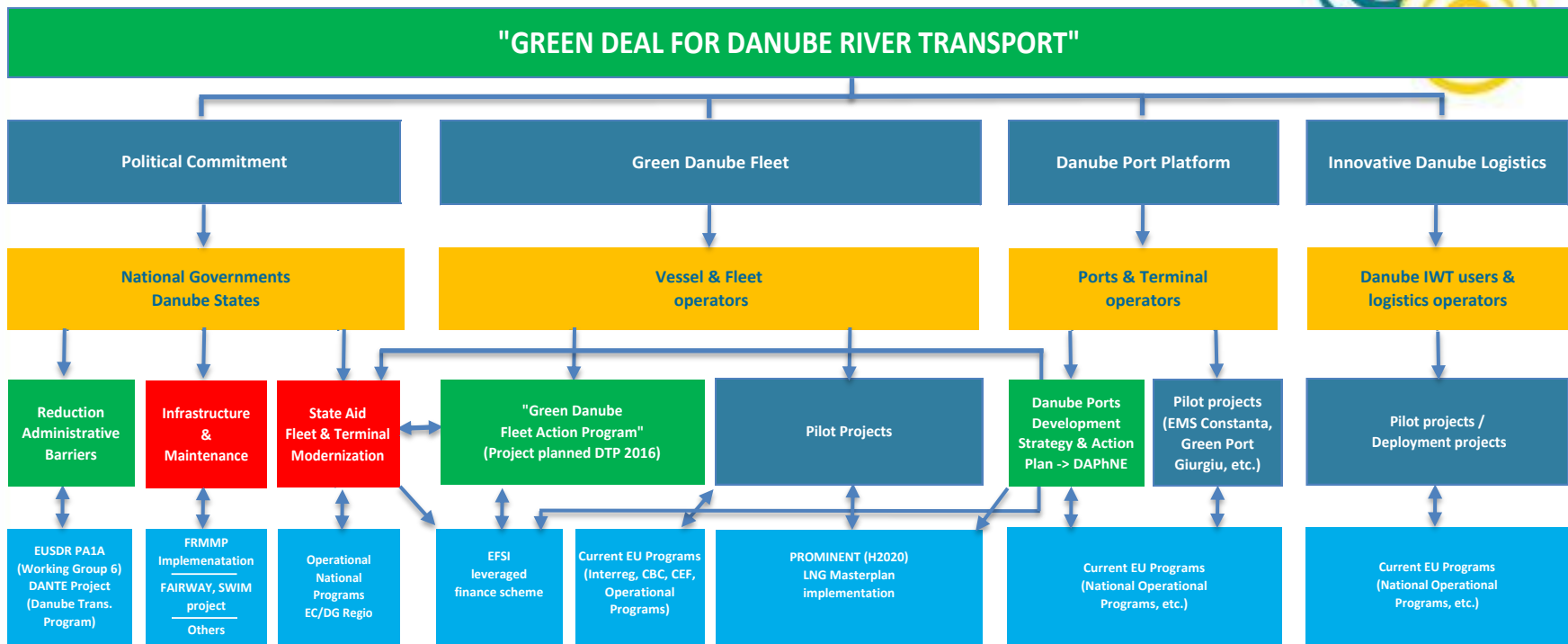
“Green Deal for Danube river transport”

- intensive, coordinated cooperation of public and private
- Improved efficiency & environmental performance of Danube logistics
- tangible results supporting sustainable economic growth

<< The roll-out of the Green Deal is done with the help of INDanube - Centre for Innovation Transfer in the Danube Region / EIBIP - European Inland Barging Innovation Platform; Project funded by EC/DG MOVE >>



The Green Deal Structure



EUSDR PA1A & Danube Corridor Plan & Danube Innovation Centre (INDanube / EIBIP)

Legend: ■ Pre-condition for innovation
■ Project platform in preparation by Pro Danube



Benefits & Implementation of Green Deal

- Green Deal provides platform for targeted long-term cooperation of Danube States – Private Sector – European Commission
- Supports key policy objectives in transport & environment / regional development / special focus on the greening of the waterborne transport system
- Ensures high leverage of public spending due to wide-scale engagement of private sector
- Embedded into EUSDR PA1A and related to Danube Corridor Plan
- Steered with help of Danube Transnational Program (DTP) projects – DANTE & DAPhNE started/ one planned for spring 2017
- Builds on successful pilot projects which testify viability of concept & produce concrete results to be up-scaled
- Green Deal will create many more valuable projects with tangible results contributing to economic growth, creating jobs and improve environmental performance of transport system of the region



Green Deal official launching event

Danube Transport Day European Parliament

7 September 2016, 16:00-18:00



Policy makers



Com. Corina Crețu



Herald Ruijters/ DG MOVE



Ionuț Mosteanu / RO MT

MEPs



Georgi Pirinski / BG



Gessine Meissner / DE



Ismail Ertug / DE

Key industry representatives from the Danube Region



W. Lüftner / Lüftner Cruises



M. Viefers / Rhenus Logistics



A. Stoian / TTS SA

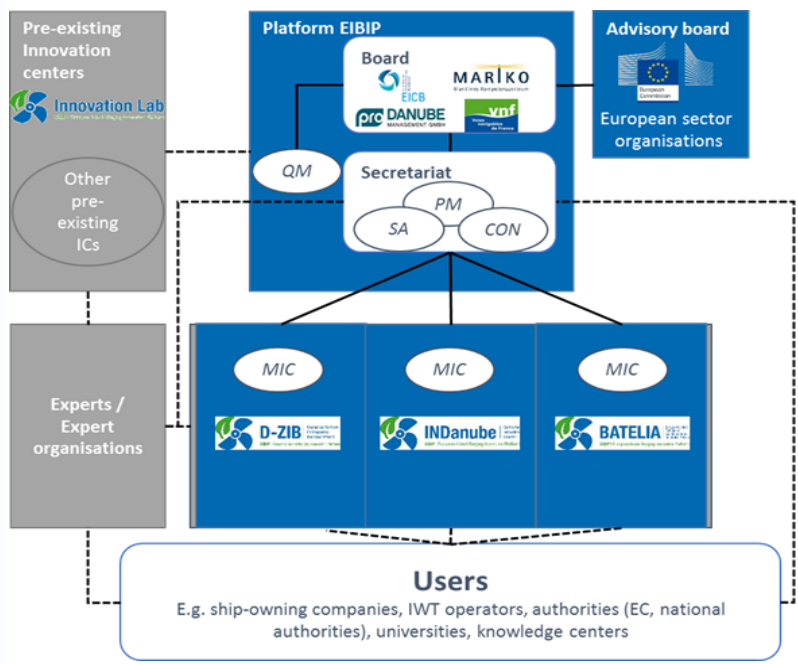


Project co-funded by European Union Funds (ERDF, IPA)



INDanube – Centre for Innovation Transfer

INDanube is part of an international network of three European Innovation Centres covering Germany, France and the Danube region which are forming the cooperation platform called EIBIP - European Inland Barging Innovation Platform and they support the innovation uptake by the inland waterway sector on the TEN-T Core Network.



Objectives

- collecting & managing all relevant technical and economic information on innovation related to IWT
- deliver critical mass & economies of scale with view to bringing (technological) innovation to real market circumstances by: **(1)** uniting technology suppliers, investors and (end)users; **(2)** raising their common interest by further aligning shared objectives; **(3)** implementing pilot innovation projects in the most promising areas of innovation as defined.

Supported by:



EIBIP overall structure
PM: Project manager; **SA:** EIBIP Secretariat Assistant
CON: Controller; **QM:** Quality manager
MIC: Manager Innovation Centre

INDanube – Dissemination tools offered



<https://indanube.eu/>



<https://www.facebook.com/INDanube/>



<https://www.linkedin.com/groups/8560850>



<https://twitter.com/INDanube>



How INDanube can help you with Innovative inland barging

About INDanube
INDanube aims to generate and to facilitate innovation projects through its services and shall engage in the build-up of a policy framework which enables and supports innovation in Danube IWT. This policy framework shall be embedded in the existing initiatives of the European Commission which foster the further development. [Read more](#)

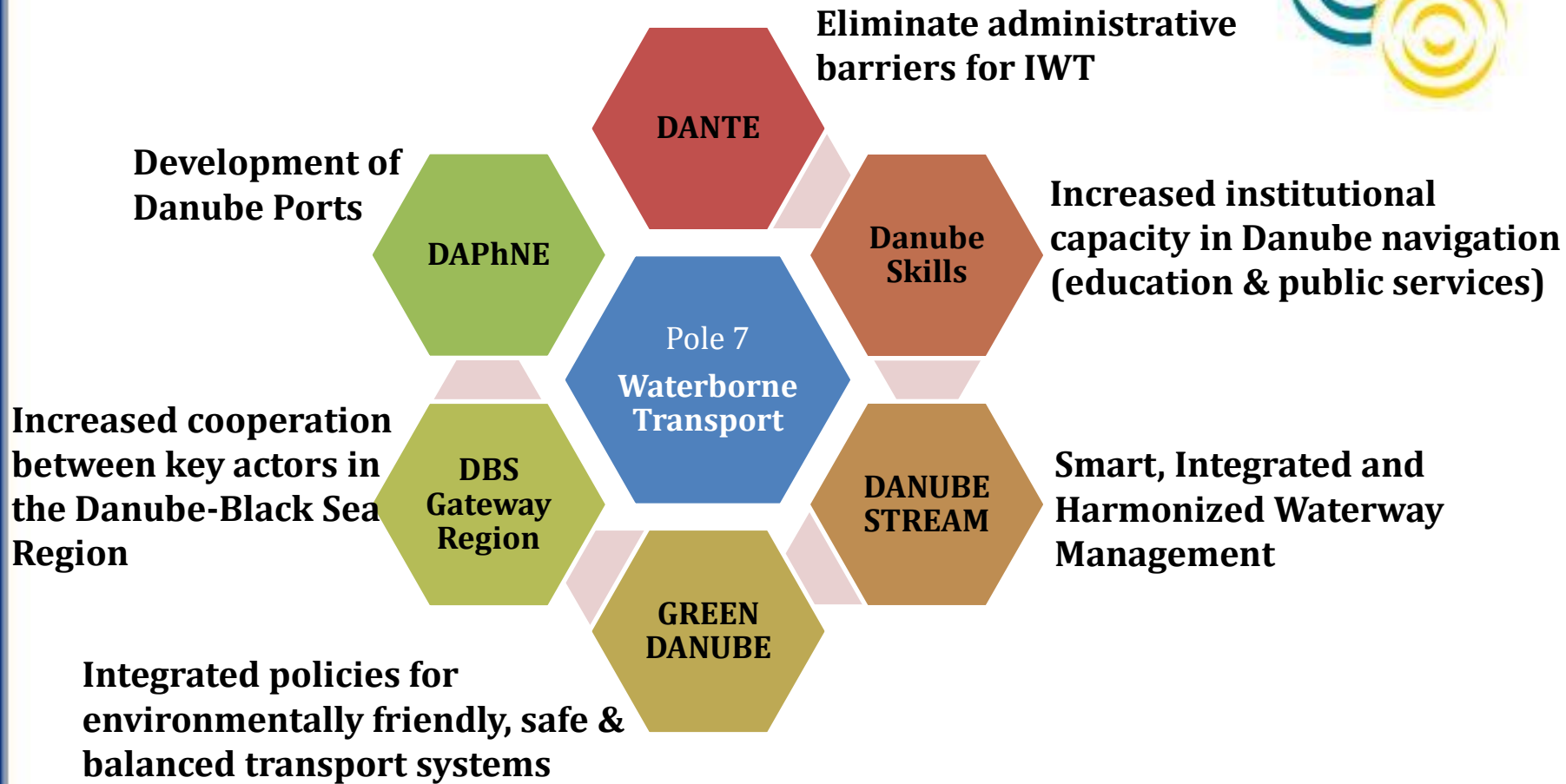
Main services
Successful innovation transfer demands the definition and application of a wide portfolio of instruments. INDanube organizes the knowledge transfer in the Danube region regarding the innovation needs from the perspective of the society, vessel & fleet operator, transport users and logistic operators, authorities and policy makers. The main services... [Read more](#)

Regional Partners
In order to reach out to key stakeholders in the region, INDanube made arrangements with three regional organisations with proved expertise such as ARD which is the state-owned promotion agency for IWT in Slovakia, with RSCG which is the leading organisation for development and operation of IBS in Hungary... [Read more](#)





DTP Capitalisation





Improving Administrative Procedures and Processes for Danube IWT (DANTE)

Danube Transnational Programme 2014 – 2020



How to deal with administrative barriers?

- Identify administrative barriers for IWT on Danube and tributaries and responsible authorities
- Set up an efficient and permanent monitoring system for collecting users experiences (supported by online tools)
- Set up and operate a working platform with responsible authorities in order to adapt administrative procedures and processes with the objectives to reduce administrative efforts and costs for waterway users
- Identify good practices and guidelines for effective administration of IWT activities
- Promote stronger harmonized procedures and processes of authorities effecting IWT transport on Danube and navigable tributaries



Focus on the objectives of the Danube Region Strategy



Objectives of the project

- Improve administrative procedures and reduce bureaucratic processes as well as related charges and fees for IWT on Danube and navigable tributaries
- Cooperate with public authorities to develop and implement simplified administrative procedures and processes
- Reduce time losses and costs caused by unnecessary administrative regulations and processes for Danube businesses
- Eliminate/Reduce red tape and abuse of administrative power
- Strengthen the competitive position of companies, support economic growth and the creation of jobs in the region by increased efficient public administration
- Introduce stakeholder consultation procedures and processes in legal and regulatory acts of public administration relevant for IWT
- Harmonize regulations and administrative processes for transport and transshipment operations (“Same River-Same Rules” concept)



Areas of activities

Procedures and processes of the following national authorities will be analyzed and monitored:

- Border Police and Tax & Customs authorities *)
- Navigation authorities (traffic control authorities)
- Port authorities (Harbor master) /administrations
- Waterway and Canal administrations
- Other authorities (such as Health Control, Disaster Management, Law Enforcement/Water Police, etc.) which impose administrative barriers to the movement of inland vessels and the transportation and transshipment of goods on the river and in the ports

*) the PA1A/EUSDR technical secretariat via donau has recently carried out an investigation on border and customs procedures and processes and has developed a model process for border crossings. The work in this area will be updated and used as basis for the structured dialogue in the relevant working table of the PA1A/EUSDR working group on administrative processes



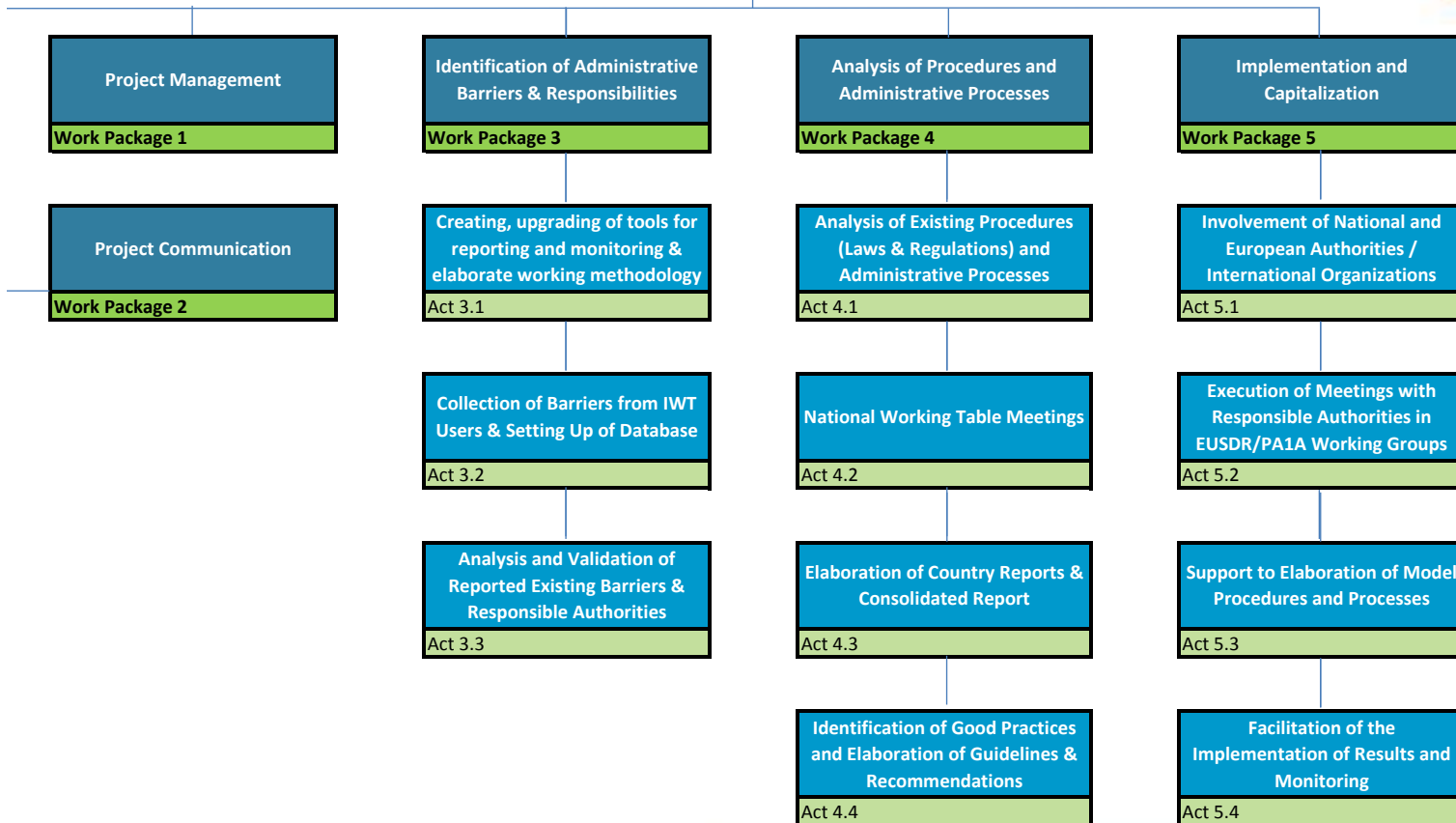
Work approach

- Identify barriers in each country along the Danube and its main navigable tributaries
- Assign barriers to responsible authorities
- Inform responsible ministries / EC services
- Set up workshops with relevant authorities at national level
- Discuss with authorities the identified problems
- Elaborate concrete solutions for improvement / recommendations
- Collaborate with PA1A secretariat for setting up of "working tables" as part of the working group dealing with administrative processes to create transnational working level
- Elaborate necessary improvements in procedures and processes
- Establish permanent monitoring to ensure implementation of agreed changes
- Create, upgrade and maintain related IT monitoring tools
- Disseminate results to targeted stakeholder groups



Work breakdown structure - overview

Improving Administrative Procedures and Processes for Danube IWT (DANTE)





Partnership Structure – Covering the whole Danube River and the Sava

Partners: associations of port operators, barge operators, inland waterway logistics operators, IWT promotion organization, other business organizations, relevant universities, consultants, etc.

ERDF Partners:

- Pro Danube International
- Danube Commission
- Steinbeis Innovation gGmbH, Steinbeis-Europe-Center / DE
- iC consulenten ZT GesmbH / AT
- University of Applied Sciences Upper Austria (FHOO)
- Waterborne Transport Development Agency (ARVD) / SK
- Slovak Shipping and Ports JSC / SK
- Hungarian Shipping Federation (MAHOSZ)
- Hungarian Federation of Inland Waterway Freight Forwarders (MBFSZ)
- Romanian Ministry of Transport
- Romanian River Ship Owners and Port Operators Association (AAOPFR)
- Pro Danube Romania
- Constanta Port Business Association
- Port Authority Vukovar
- Bulgarian-Romanian Chamber of Commerce and Industry

IPA Partner:

- Shipmasters Association of Serbia

Associated Strategic Partners:

- International Sava River Basin Commission
- Rhenus Logistics Austria GmbH
- Hungarian Federation of Danube Ports
- BRODOKOMERC NS d.o.o. / RS
- Port BULMARKET EAD / BG
- Union of Romanian Inland Ports
- Danube Cruises Romania srl
- Danube Logistics SRL / MD
- Ministry of Maritime Affairs, Transport and Infrastructure
- Ministry of National Development / HU
- State Enterprise Ukrainian Sea Ports Authority
- Ministry of Transport, Construction and Regional Development of the Slovak Republic

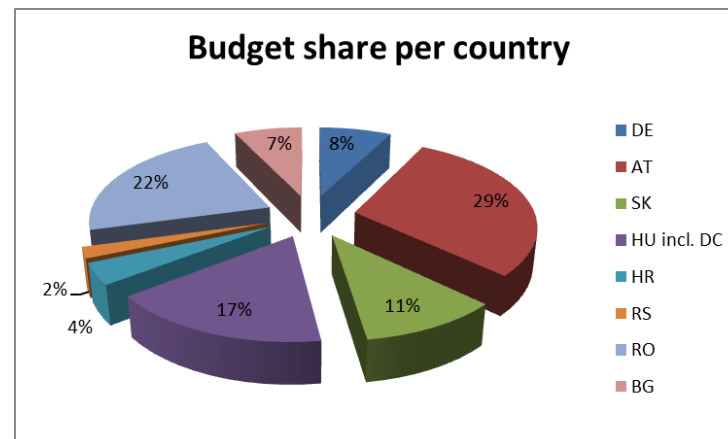
Project at a glance (1/2)





Project properties

- Duration of the project: 30 months from January 2017 to June 2019
- Total budget: 1,982,786 EUR
- ERDF Contribution: 1,650,134.75 EUR
- IPA Contribution: 35,233.35 EUR





Building on existing projects & initiatives such as....

- Study on administrative and regulatory barriers in the field of inland waterway transport (NEA 2008)
- PLATINA Sub-work package 1.2 - Monitoring administrative barriers
- DARIF in the frame of EUDRS Priority Area 11- Security
- World Bank Initiative on reducing administrative barriers in Danube transport
- Work of technical secretariat EUSDR PA1A on Border Control Model Processes
- EC objective and initiatives addressing better governance and increase of administrative capacity
- PDI Concept "Same River – Same Rules"
- PDI Policy initiative "Green Deal for Danube River Transport"



Summary & Outlook

- 30-months project to come up with simplified – harmonised – digitalised procedures and processes for Danube IWT administration
- Danube IWT Administration Strategy with the related action plan
- DANTE Platform – Project+ to monitor and facilitate the implementation





DAPhNE Goals & Structure

Project Environment





Same River – Same Rules & DAPhNE

- **Need for strategies, guidelines & tools to eliminate the gaps between Upper, Central & Lower Danube Ports**

Lead Partner: *Pro Danube International/ AT*

ERDF Partners:

Ennshafen Port/ AT
 iC consulenten ZT GesmbH/ AT
 University of Applied Sciences Upper Austria/ AT
 National Company Maritime Danube Ports Administration Galati/ RO
 National Company Maritime Ports Administration SA Constanta/ RO
 Ovidius University of Constanta/ RO
 Pro Danube Romania/ RO
 Ministry of Transport/ RO
 Bulgarian Ports Infrastructure Company/ BG
 Public Institution Port Authority Vukovar/ HR
 RGO Communications Ltd./ HR
 ILR Logistica Romania SRL/ RO
 Hungarian Federation of Danube Ports/ HU
 Public Ports jsc/ SK

• **IPA Partner:**

Port Governance Agency/RS

• **Associated Strategic Partners:**

Container Terminal Enns/ AT

Giurgiu Municipality/ RO

Port of Vienna/ AT

Ministry of the Sea, Transport and Infrastructure/HR

Ministry of Transport, Information Technology & Communications/BG

Danube Logistics SRL/ MD

State Enterprise Ukrainian Sea Ports Authority/UA



Same River – Same Rules & DAPhNE

- **Need for strategies, guidelines & tools to eliminate the gaps between Upper, Central & Lower Danube Ports**
- **Start Date: 1 January 2017**
- **End Date: 30 June 2019**

Overall budget	2.985.406,15 EUR
ERDF Contribution	2.415.219,42 EUR
IPA Contribution	122.375,77 EUR
Own contribution	447.810,96 EUR

DAPhNE Goals

Guidelines for green port policy

Concepts for alternative energy provision & distribution

Strategies & best practices for **human resources development** in the Danube ports

Intersectoral & transnational cooperation for **better port services**

Know-how transfer for a **common port development strategy**

Danube Ports Network

Innovative IT solutions for the Danube Port Community

Harmonized instruments to stimulate public & private port investments

State Aid Model Schemes

Port legislation Recommendations

Pilot action for a model architecture for a Danube port IT community system

PCS implemented in min. 3 ports (AT, SK, RS)

Logistics 4.0

The Physical Internet



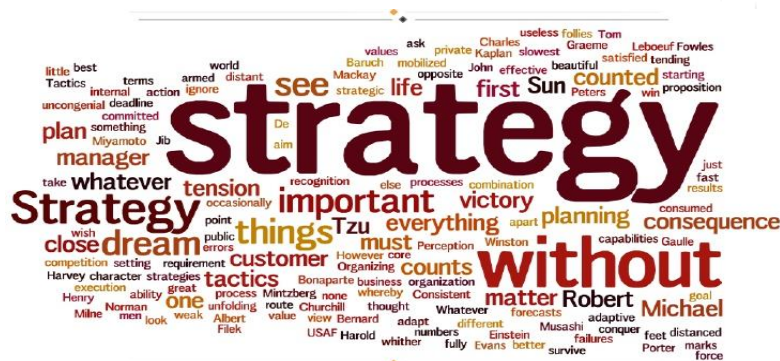
DAPhNE Main Result

Improved cooperation due to the set-up of the Danube Ports Network

- Open to any interested party:
 - Port administrations
 - Port users
 - National & local authorities from the Danube Region
- Operational by June 2019 & including approx.120 members
- Free access of members to all project outputs & deliverables
- The Danube Ports Network will continue to run as an independent entity
- Facilitate interaction of members via dedicated events organized:
 - **Port Policy Days: policy & management issues**
 - **Port Info Days: promote Danube ports as logistics & services hubs**

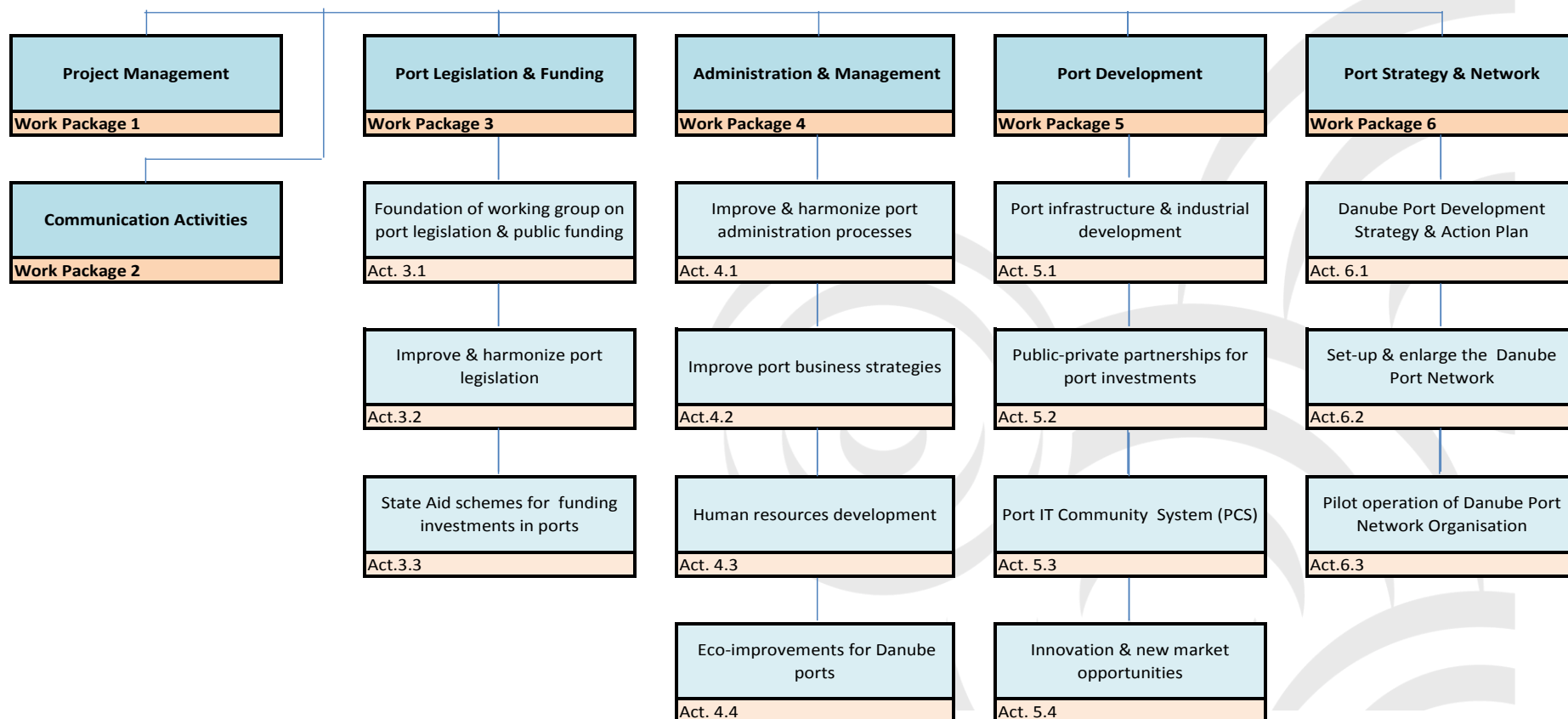
Long-term solutions for the Danube Ports Network

- **Concept for the Danube Ports Network**
 - Annual work programmes
 - Financial model
 - Business plan
- **Pilot operation of the Danube Ports Network**
- **Danube Port Development Strategy & Action Plan**





DAPhNE - Danube Ports Network





Thank you for your attention!



Manfred Seitz
Raluca Danila - DAPhNE
Robert Rafael - DANTE
Pro Danube International
seitz@prodanube.eu
danila@prodanube.eu
rafael@prodanube.eu