

WP 5 – Port Development



Werner Auer, General Manager Ennshafen OÖ GmbH
Kick-off meeting, 20.02.2017





- Direct connection to the highway (A1 west expressway)
- Direct railway connection (West railway)
- Strategically favorable position on the Rhine-Main-Danube waterway
- Trimodal cargo handling
- TEN-T Core Node
- Access to the neutral infrastructure

Total Area: **3,5 Mio sqm**

Port area: 1,100,000 sqm
 Quai length: 2,500 m

Industrial park upper austria: 1,753,000 sqm
 Industrial park lower austria: 677,000 sqm

Companies / Employees: 59 / 2,200

Container Terminal

lease of land and terminal 20 years / PPP model

Capacity: 400,000 TEU
 Paved area: 170,000 sqm
 Rails: 9 x 700 m
 Crane: 3 gantry cranes
 Storage capacity: 8,000 TEU
 Feeder line: 14.5 km track length
 (block train)

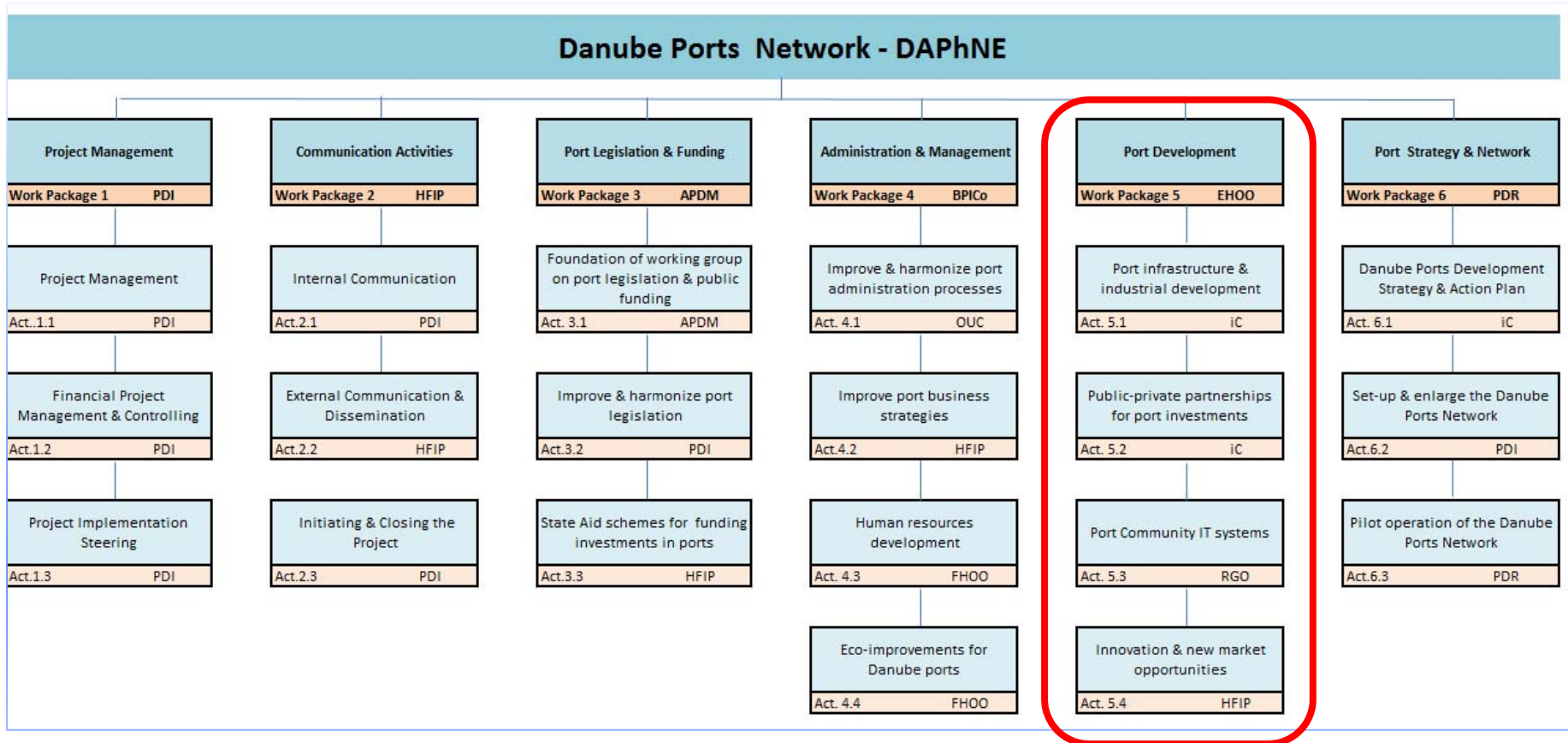


Port Services

- Construction/maintenance of infrastructure
- Free space to establish your business
- Rental office
- Harbour master
- Handling/storage/processing/packaging/bunkering and Containerterminal are provided by private companies
- Customs clearance / customs services
- RoRo facility

Transshipment 2016

- Waterside transshipment: 597,290 to
- Container handling: 305,891 TEU





WP 5 – Port development

Duration: 06/2017 – 12/2018

Budget: 728,055.00 €

Activities:

- 5.1 Port infrastructure & industrial development
- 5.2 Public-private partnerships for port investments
- 5.3 Port IT Community System (PCS)
- 5.4 Innovation & new market opportunities



WP 5 – Partners involved

- Pro Danube International / AT
- iC consulenten ZT GesmbH / AT
- University of Applied Sciences Upper Austria / AT
- Maritime Danube Ports Administration SA Galati / RO
- Maritime Ports Administration SA Constanta / RO
- Ovidius University of Constanta / RO
- Pro Danube Romania / RO
- Ministry of Transport of Romania / RO
- Bulgarian Ports Infrastructure Company / BG
- Public Institution Port Authority Vukovar / HR
- RGO Communications Ltd. / HR
- ILR Logistica Romania SRL / RO
- Hungarian Federation of Danube Ports / HU
- IPA Partner - Port Governance Agency / SRB

- ASP Partner – Containerterminal Enns / AT
- ASP Partner – Port of Vienna / AT
- ASP Partner – Ministry of Maritime Affairs, Transport and Infrastructure / HR



WP 5 - OUTPUTS

- Port investment guidelines & New markets studies
- Model architecture for port community system (PCS)
- Port Community System implemented in 2 Ports (AT/SK)
– Pilot Actions!



WP 5 - DELIVERABLES

Activity 5.1 – Port Infrastructure & Industrial Development

- Report on status quo of port infrastructure development along the Danube
- Good practice report for Port Master Planning
- Guidelines for industrial development initiatives in ports

Activity 5.2 – Public-Private Partnerships for Port Investments

- Question list – addressed to the ministries, public port authorities
- Report on PPPs in the Danube Region

Activity 5.3 – Port IT Community System (PCS)

- Study visit Rhine region
- Report on study visit
- Input collection form for the Port Community System
- Monitoring report for the pilot implementation
- Pre-feasibility studies (made in RO ports)

Activity 5.4 – Innovation & new market opportunities

- Best practice examples regarding industrial ecology
- LNG as cargo in the Danube ports
- Danube Container Market Report
- Danube Ports & the Physical Internet



Thank you for your kind attention!

Werner Auer, General Manager Ennshafen OÖ GmbH

w.auer@ennshafen.at