

# GREEN DANUBE

**Integrated transnational policies and practical solutions  
for an environmentally-friendly Inland Water Transport system  
in the Danube region**



**GREEN DANUBE**

**Ghiuler MANOLE**  
**Quality Assurance Manager**

*24 02 2017, Constanta*  
*GREEN DANUBE Partner Meeting*

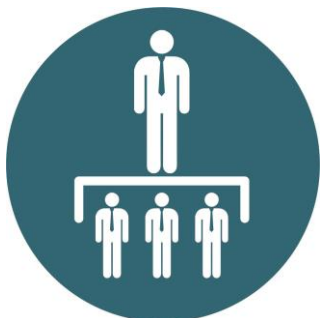


**Danube Transnational Programme**  
**GREEN DANUBE**

Project co-funded by European Union Funds (ERDF, IPA)



## Mandatory rules



- appointment of an independent quality manager in LP team
- quality validation of project outputs
- NO quality validation → NO reimbursement of expenditures
- Findings/ recommendation of the quality assurance manager have to be implemented by the partnership and all these findings/ recommendations have to be included in the quality assurance report



## Tasks of the Quality Manager



- Reviewing and validation of all project outputs
- Preparation of the Quality Reports
- Informing the JS about any obstacles/ problems encountered during the process



## Quality report structure



- Output title
- Type of output (Documented learning interaction, Strategy/ Action Plan, Tool, Pilot action)
- Contribution to the Programme objective indicator
- Summary of the output
- Added value
- Applicability and replicability
- Suggestions for improvement, if applicable
- Output quality level (Low, Average, Good, Excellent)



## Output Factsheet structure



- Output title
- Summary of the output
- Contribution to the project and Programme objectives
- Transnational impact
- Contribution to EUSDR actions and/or targets
- Performed testing, if applicable
- Integration and use of the output by the target group
- Geographical coverage and transferability
- Durability
- Synergies with other projects/ initiatives and / or alignment with current EU policies/ directives/ regulations, if applicable
- Output integration in the current political/ economic/ social/ technological/ environmental/ legal/ regulatory framework





# Thank you for your attention!



**Ghiuler MANOLE**

CERONAV

[ghiulermanole@ceronav.ro](mailto:ghiulermanole@ceronav.ro)