



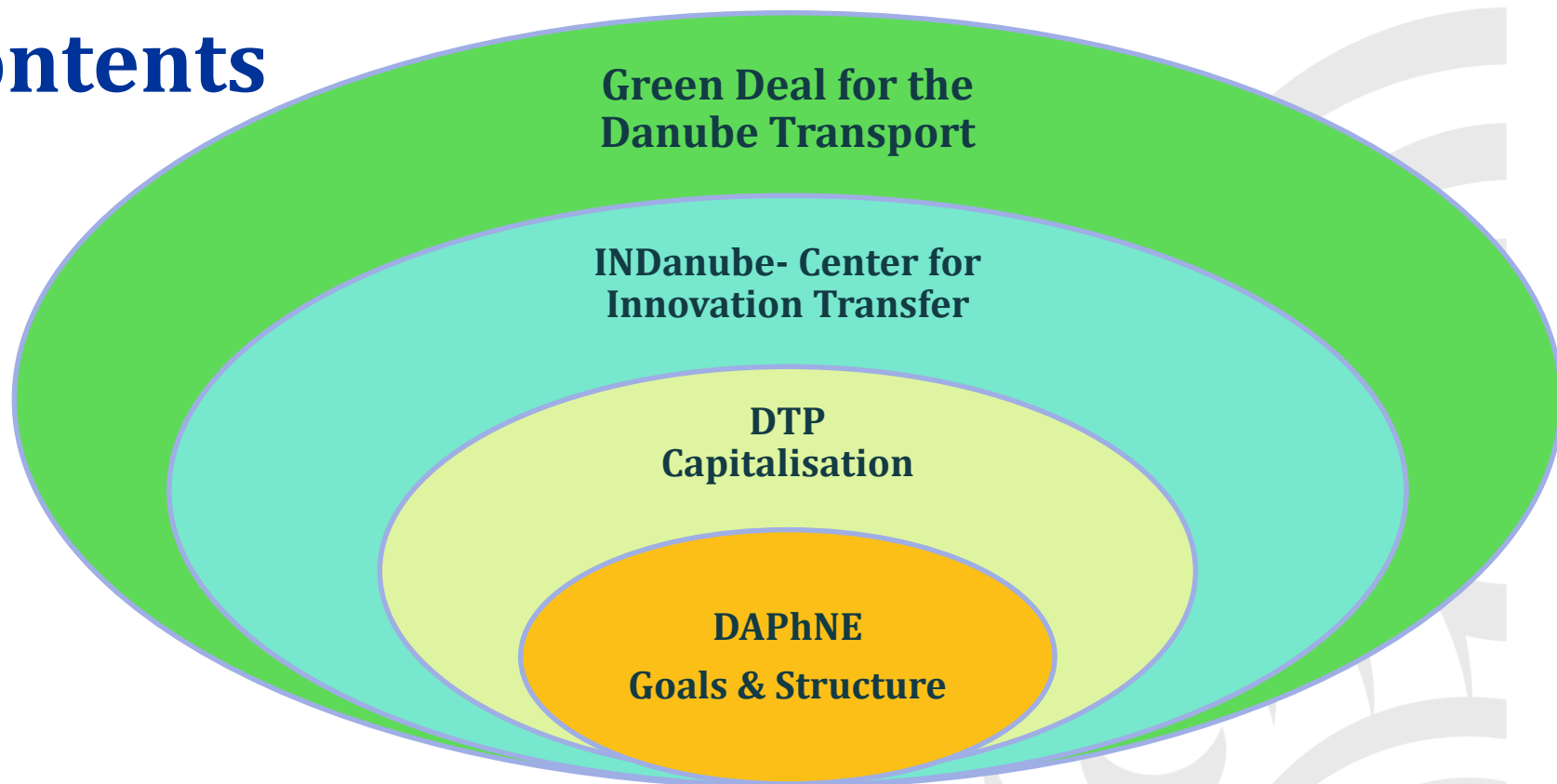
DAPhNE Goals & Structure

Project Environment

Manfred Seitz
Raluca Danila
Pro Danube International
Kick-off Meeting,
20 February 2017, Budapest



Contents



Danube Waterway: High Potential – Numerous Challenges

Strengths

- Danube serves an economic area of circa 90M inhabitants
- Connects CE & SEE with growing markets in Black Sea Region
- Environmentally friendly transport corridor
- Can provide cost-effective logistics for land-locked industries ensuring competitiveness and jobs

Challenges

- Ensure standards for waterway maintenance
- Elimination of infrastructure bottlenecks
- *Promotion of investment in Danube Ports and unlocking their economic potential*
- Modernize Danube fleet
- Reduce logistics costs by elimination of administrative barriers

Green Deal: Rationale & Concept

Eco-efficient & reliable transport system needed for sustainable growth in region

Danube logistics can provide cost-effective logistics solutions to many industries supporting competitiveness, growth & jobs

High economic potentials of Danube withhold by infrastructure shortcomings, unfavourable regulatory framework & structural problems

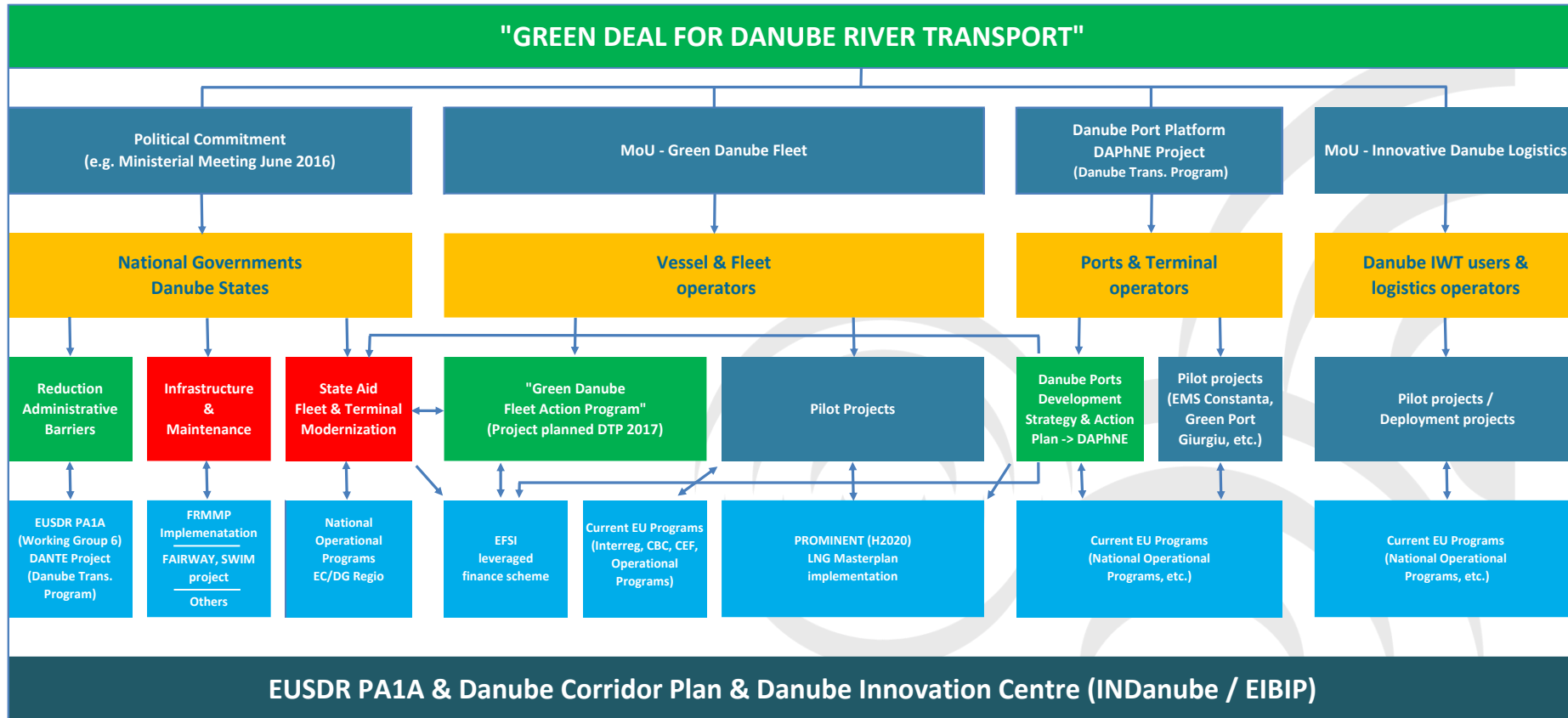
Long-term cooperation of public & private sector can break vicious cycle of infrastructure degradation & reduction of transport demand

Restoration of trust into Danube through commitment of stakeholders

“Green Deal for Danube river transport”

- Intensive, coordinated cooperation of the public and private sectors
- Improved efficiency & environmental performance of Danube logistics
- Tangible results supporting sustainable economic growth

<< The roll-out of the Green Deal is done with the help of INDanube - Centre for Innovation Transfer in the Danube Region / EIBIP - European Inland Barging Innovation Platform; Project funded by EC/DG MOVE >>



Legend: ■ Pre-condition for innovation

■ Project platform in preparation by Pro Danube

Status: February 2017

Benefits & Implementation of the Green Deal

- The Green Deal provides a platform for targeted long-term cooperation of Danube States – Private Sector – European Commission
- Supports key policy objectives in transport & environment/ regional development/ special focus on the greening of the waterborne transport system
- Ensures high leverage of public spending due to wide-scale engagement of private sector
- Embedded into EUSDR PA1A and related to Danube Corridor Plan
- Steered with help of Danube Transnational Program (DTP) projects – DANTE & DAPhNE started/ one planned for spring 2017
- Builds on successful pilot projects which testify viability of concept & produce concrete results to be up-scaled
- Green Deal will create many more valuable projects with tangible results contributing to economic growth, creating jobs and improve environmental performance of transport system of the region

Green Deal – official launching event

Danube Transport Day European Parliament

7 September 2016, 16:00-18:00



European Parliament

pro DANUBE



Policy makers



Com. Corina Crețu



Herald Ruijters/ DG MOVE



Ionuț Mosteanu / RO MT

MEPs



Georgi Pirinski / BG



Gessine Meissner / DE



Ismail Ertug / DE

Key industry representatives from the Danube Region



W. Lüftner / Lüftner Cruises



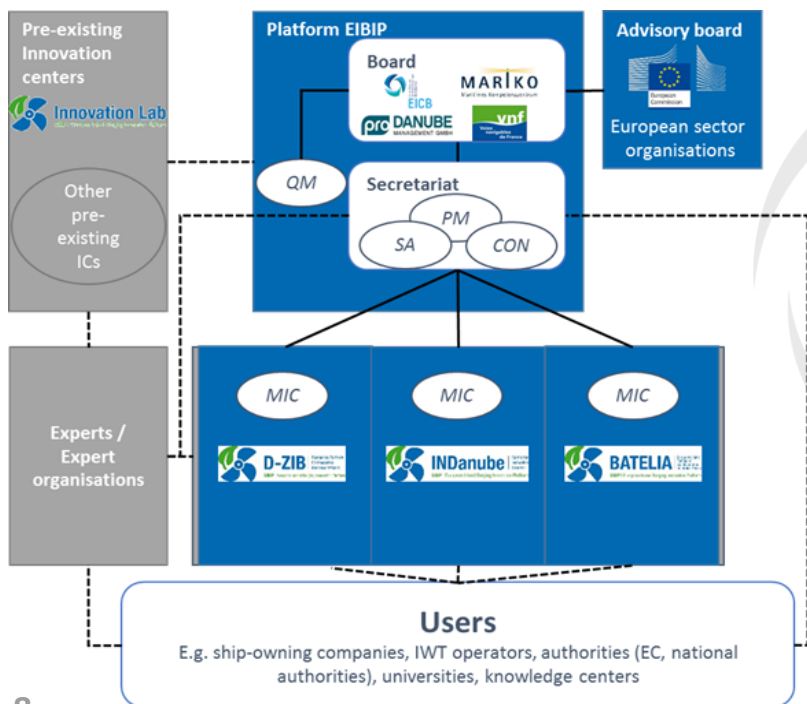
M. Viefers / Rhenus Logistics



A. Stoian / TTS SA

INDanube – Centre for Innovation Transfer

INDanube is part of an international network of three European Innovation Centres covering Germany, France and the Danube region which are forming the cooperation platform called **EIBIP - European Inland Barging Innovation Platform** and they support the innovation uptake by the inland waterway sector on the TEN-T Core Network.



Objectives:

- Collecting & managing all relevant technical and economic information on innovation related to IWT
- Deliver critical mass & economies of scale with view to bringing (technological) innovation to real market circumstances by: (1) uniting technology suppliers, investors and (end)users; (2) raising their common interest by further aligning shared objectives; (3) implementing pilot innovation projects in the most promising areas of innovation as defined.

Supported by:



EIBIP overall structure

PM: Project manager; **SA:** EIBIP Secretariat Assistant

CON: Controller; **QM:** Quality manager

MIC: Manager Innovation Centre

INDanube – Dissemination tools offered



<https://indanube.eu/>



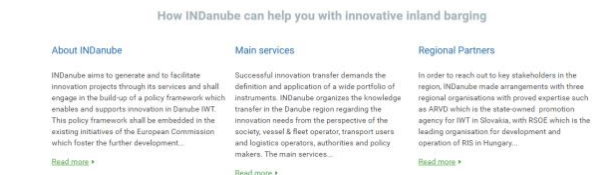
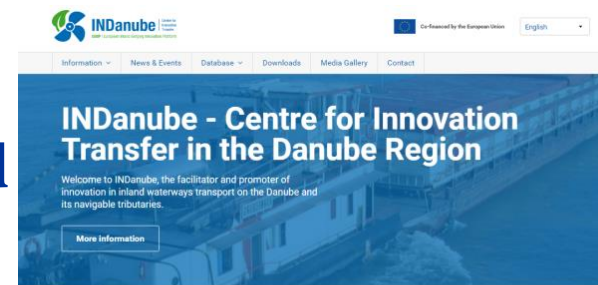
<https://www.facebook.com/INDanube/>



<https://www.linkedin.com/groups/8560850>

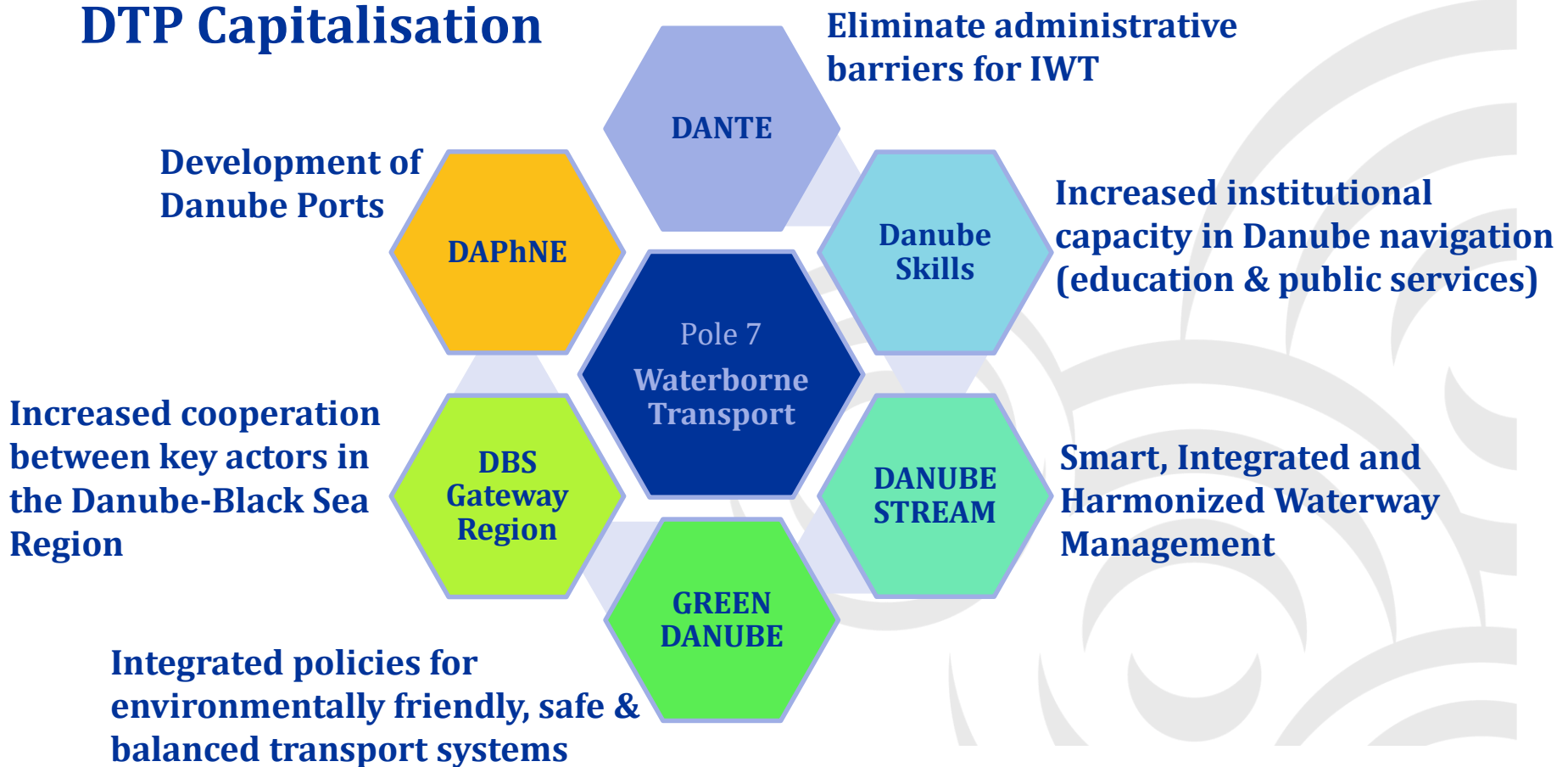


<https://twitter.com/INDanube>





DTP Capitalisation





Same River – Same Rules & DAPhNE

- **Need for strategies, guidelines & tools to eliminate the gaps between Upper, Central & Lower Danube Ports**

Lead Partner: *Pro Danube International/ AT*

ERDF Partners:

Ennshafen Port/ AT
 iC consulenten ZT GesmbH/ AT
 University of Applied Sciences Upper Austria/ AT
 National Company Maritime Danube Ports Administration Galati/ RO
 National Company Maritime Ports Administration SA Constanta/ RO
 Ovidius University of Constanta/ RO
 Pro Danube Romania/ RO
 Ministry of Transport/ RO
 Bulgarian Ports Infrastructure Company/ BG
 Public Institution Port Authority Vukovar/ HR
 RGO Communications Ltd./ HR
 ILR Logistica Romania SRL/ RO
 Hungarian Federation of Danube Ports/ HU
 Public Ports jsc/ SK

• **IPA Partner:**

Port Governance Agency/RS

• **Associated Strategic Partners:**

Container Terminal Enns/ AT

Giurgiu Municipality/ RO

Port of Vienna/ AT

Ministry of the Sea, Transport and Infrastructure/HR

Ministry of Transport, Information Technology & Communications/BG

Danube Logistics SRL/ MD

State Enterprise Ukrainian Sea Ports Authority/UA



Same River – Same Rules & DAPhNE

- **Need for strategies, guidelines & tools to eliminate the gaps between Upper, Central & Lower Danube Ports**
- **Start Date: 1 January 2017**
- **End Date: 30 June 2019**

Overall budget	2.985.406,15 EUR
ERDF Contribution	2.415.219,42 EUR
IPA Contribution	122.375,77 EUR
Own contribution	447.810,96 EUR

DAPhNE Goals

Guidelines for green port policy

Concepts for alternative energy provision & distribution

Strategies & best practices for **human resources development** in the Danube ports

Intersectoral & transnational cooperation for **better port services**

Know-how transfer for a **common port development strategy**

Danube Ports Network

Innovative IT solutions for the Danube Port Community

Harmonized instruments to stimulate public & private port investments

State Aid Model Schemes

Port legislation Recommendations

Pilot action for a model architecture for a Danube port IT community system

PCS implemented in min. 3 ports (AT, SK, RS)

Logistics 4.0

The Physical Internet

DAPhNE Main Result

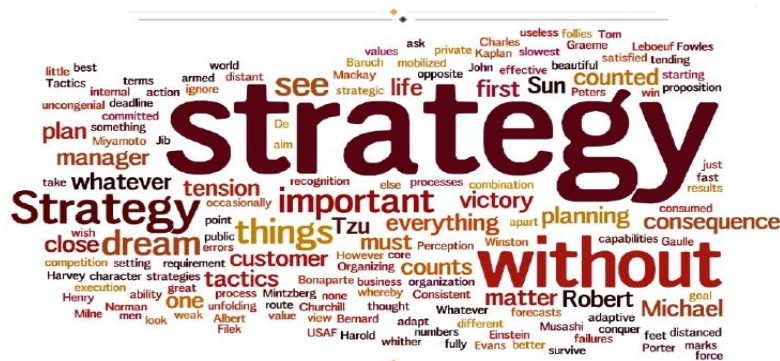
Improved cooperation due to the set-up of the Danube Ports Network

- Open to any interested party:
 - Port administrations
 - Port users
 - National & local authorities from the Danube Region
- Operational by June 2019 & including approx.120 members
- Free access of members to all project outputs & deliverables
- The Danube Ports Network will continue to run as an independent entity
- Facilitate interaction of members via dedicated events organized:
 - **Port Policy Days: policy & management issues**
 - **Port Info Days: promote Danube ports as logistics & services hubs**



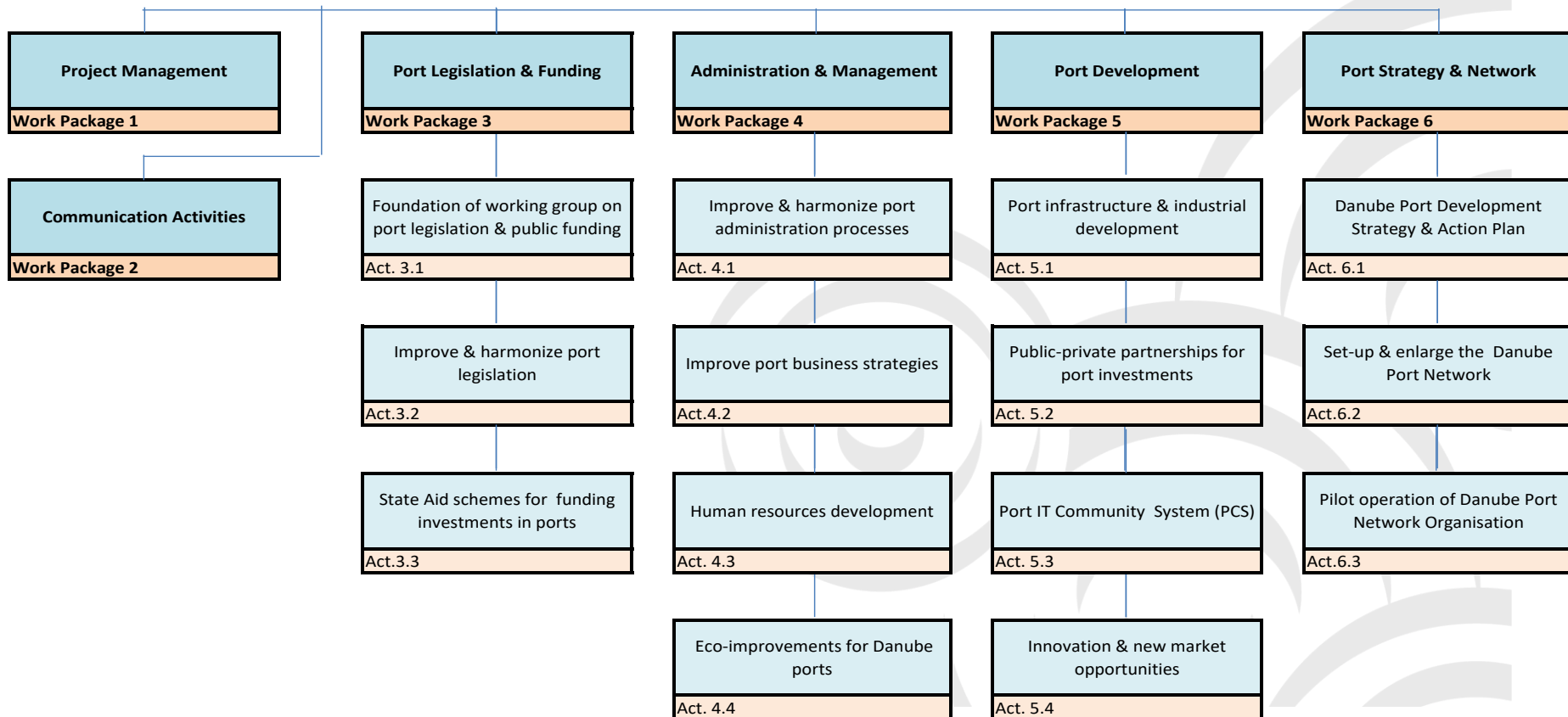
Long-term solutions for the Danube Ports Network

- **Concept for the Danube Ports Network**
 - Annual work programmes
 - Financial model
 - Business plan
- **Pilot operation of the Danube Ports Network**
- **Danube Port Development Strategy & Action Plan**





DAPhNE - Danube Ports Network





Thank you for your attention!

Manfred Seitz

Pro Danube International
seitz@prodanube.eu
+43 1 890 66 47 11

Raluca Danila

Pro Danube International
danila@prodanube.eu
+43 1 890 66 47 24

